

Specifications

±33,000 SF TOTAL BUILDING SIZE	30'W COLUMNS
16' – 20' CEILING HEIGHTS	1 DRIVE-IN DOOR
180' TRUCK COURT	Dry SPRINKLER
6 (4 Interior) DOCK DOORS	HI ZONING
400A, 120/280V 3-Phase POWER	±1.31 AC Block 605, Lot 2 LOT ACREAGE
\$51,115.86 TAXES (2025)	
0.6 Miles to Route 22	
0.7 Miles to I-78	
8.6 Miles to Elizabeth Port Area	
ACCESSIBILITY	

For additional property information or to arrange an inspection, please contact the exclusive brokers:

Jason M. Crimmins, CCIM, SIOR
Chief Executive Officer
973.379.6644 x 122
jmcrimmins@blauberg.com

Alessandro (Alex) Conte, CCIM, SIOR
President
973.379.6644 x 131
aconte@blauberg.com

Peter J. Murano, Jr., SIOR
Managing Executive Director
973.379.6644 x 114
pjmurano@blauberg.com



For additional property information or to arrange an inspection, please contact the exclusive brokers:

Jason M. Crimmins, CCIM, SIOR
Chief Executive Officer
973.379.6644 x 122
jmcrimmins@blauberg.com

Alessandro (Alex) Conte, CCIM, SIOR
President
973.379.6644 x 131
aconte@blauberg.com

Peter J. Murano, Jr., SIOR
Managing Executive Director
973.379.6644 x 114
pjmurano@blauberg.com

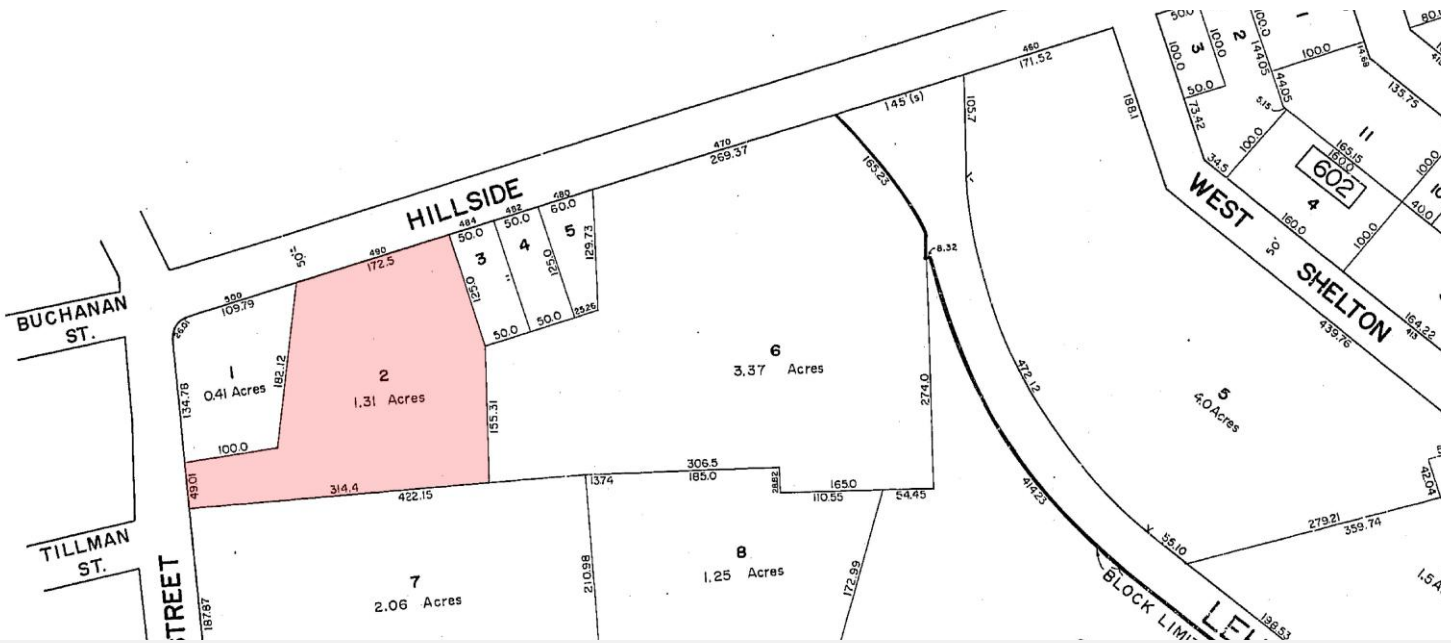


For additional property information or to arrange an inspection, please contact the exclusive brokers:

Jason M. Crimmins, CCIM, SIOR
Chief Executive Officer
973.379.6644 x 122
jmcrimmins@blauberg.com

Alessandro (Alex) Conte, CCIM, SIOR
President
973.379.6644 x 131
aconte@blauberg.com

Peter J. Murano, Jr., SIOR
Managing Executive Director
973.379.6644 x 114
pjmurano@blauberg.com

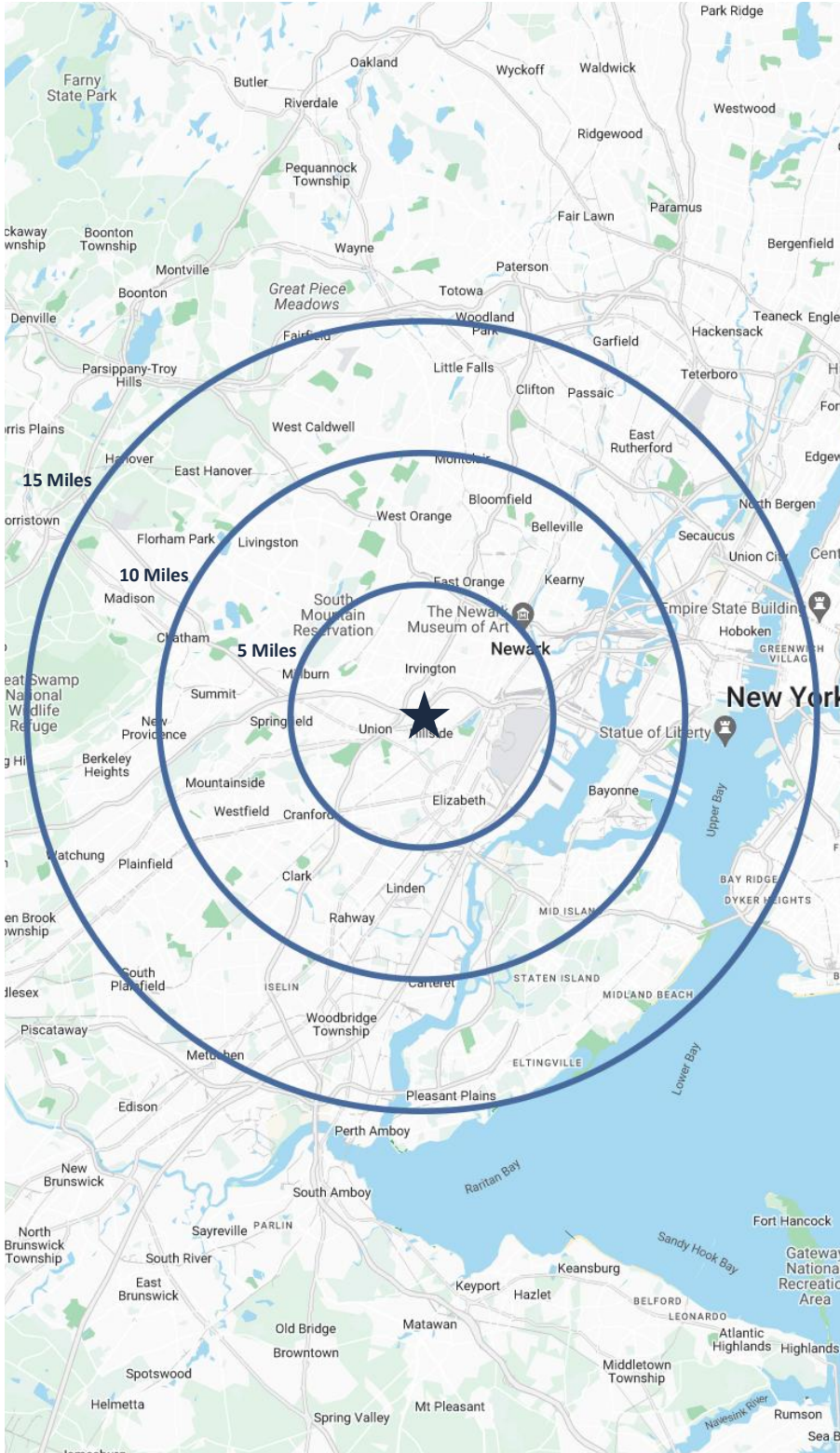


For additional property information or to arrange an inspection, please contact the exclusive brokers:

Jason M. Crimmins, CCIM, SIOR
 Chief Executive Officer
 973.379.6644 x 122
 jmcrimmins@blauberg.com

Alessandro (Alex) Conte, CCIM, SIOR
 President
 973.379.6644 x 131
 acont@blauberg.com

Peter J. Murano, Jr., SIOR
 Managing Executive Director
 973.379.6644 x 114
 pjmurano@blauberg.com



5 MILES

- Total Population: 812,568
- Households: 292,666
- Median Household Income: \$86,148
- Average Household Size: 2.7
- Transportation to Work: 400,830
- Labor Force: 644,701

10 MILES

- Total Population: 2.13M
- Households: 784,693
- Median Household Income: \$107,340
- Average Household Size: 2.7
- Transportation to Work: 1.07M
- Labor Force: 1.71M

15 MILES

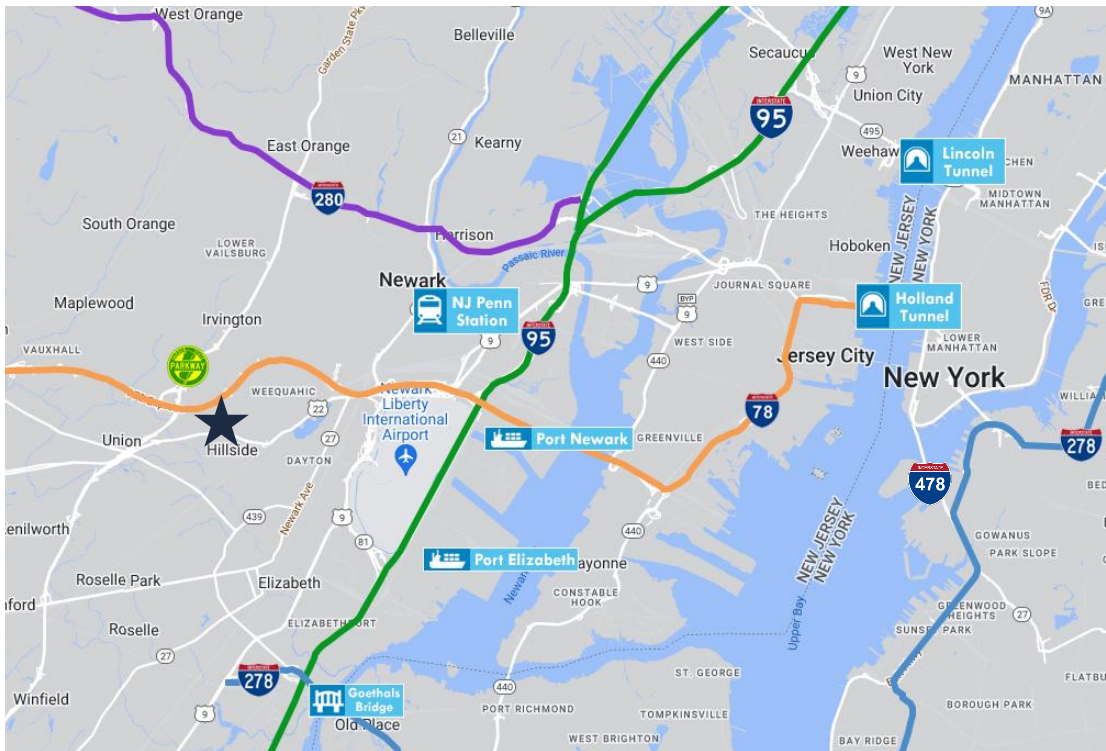
- Total Population: 5.84M
- Households: 2.32M
- Median Household Income: \$120,439
- Average Household Size: 2.5
- Transportation to Work: 3.12M
- Labor Force: 4.78M

For additional property information or to arrange an inspection, please contact the exclusive brokers:

Jason M. Crimmins, CCIM, SIOR
Chief Executive Officer
973.379.6644 x 122
jmcrimmins@blauberg.com

Alessandro (Alex) Conte, CCIM, SIOR
President
973.379.6644 x 131
aconte@blauberg.com

Peter J. Murano, Jr., SIOR
Managing Executive Director
973.379.6644 x 114
pjmurano@blauberg.com



ACCESSIBILITY

	0.6 MI Route 22
	0.7 MI I-78
	3.7 MI US Hwy 1 & 9
	6.2 MI I-95 Exit 14
	8.6 MI Ports Newark and Elizabeth

For additional property information or to arrange an inspection, please contact the exclusive brokers:

Jason M. Crimmins, CCIM, SIOR
 Chief Executive Officer
 973.379.6644 x 122
 jmcrimmins@blauberg.com

Alessandro (Alex) Conte, CCIM, SIOR
 President
 973.379.6644 x 131
 acont@blauberg.com

Peter J. Murano, Jr., SIOR
 Managing Executive Director
 973.379.6644 x 114
 pjmurano@blauberg.com

The information contained herein has been obtained from sources considered to be reliable, but no guarantee of its accuracy is made by this company. In addition, no representation is made respecting zoning, condition of title, dimensions, or any matters of a legal or environmental nature. Such matters should be referred to legal counsel for determination. Terms and conditions are subject to change without prior notice. Subject to errors and omissions.

