

OGDEN JUNCTION OFFICE

FOR LEASE



PROPERTY DETAILS

372 East 24th Street, Ogden, Utah 84401

LEASE RATE: \$25.00/SF FULL SERVICE

AVAILABLE

- First floor (2,523 RSF total):
 - 2,523 RSF
- Second Floor (6,430 RSF total):
 - 6,430 RSF
- Fourth floor (5,399 RSF total):
 - 1,541 SF
 - 3,858 SF
- High visibility corner location
- Located in The Junction, Ogden's downtown entertainment district
- Numerous walkable amenities
- Open space and dense layouts available
- Possible to demise
- Covered, no-cost parking at The Junction



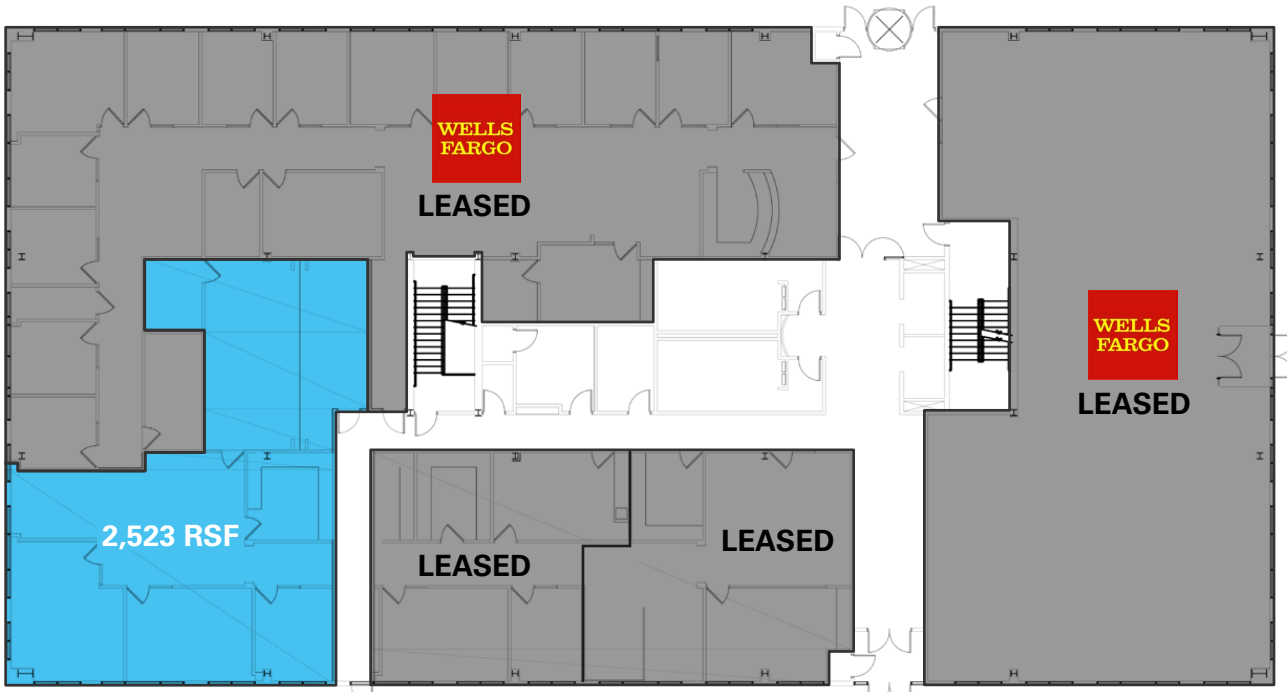
CHRIS FALK, CCIM, SIOR
cfalk@newmarkmw.com
direct 801.499.6514
[View Profile](#)

BRAXTON WILLIE, CCIM
bwillie@newmarkmw.com
direct 801.803.3334
[View Profile](#)

**FULL SERVICE
COMMERCIAL REAL ESTATE**
1410 S University Park Blvd, Ste 120
Clearfield, Utah 84015
Office 801.578.5580
www.newmarkmw.com

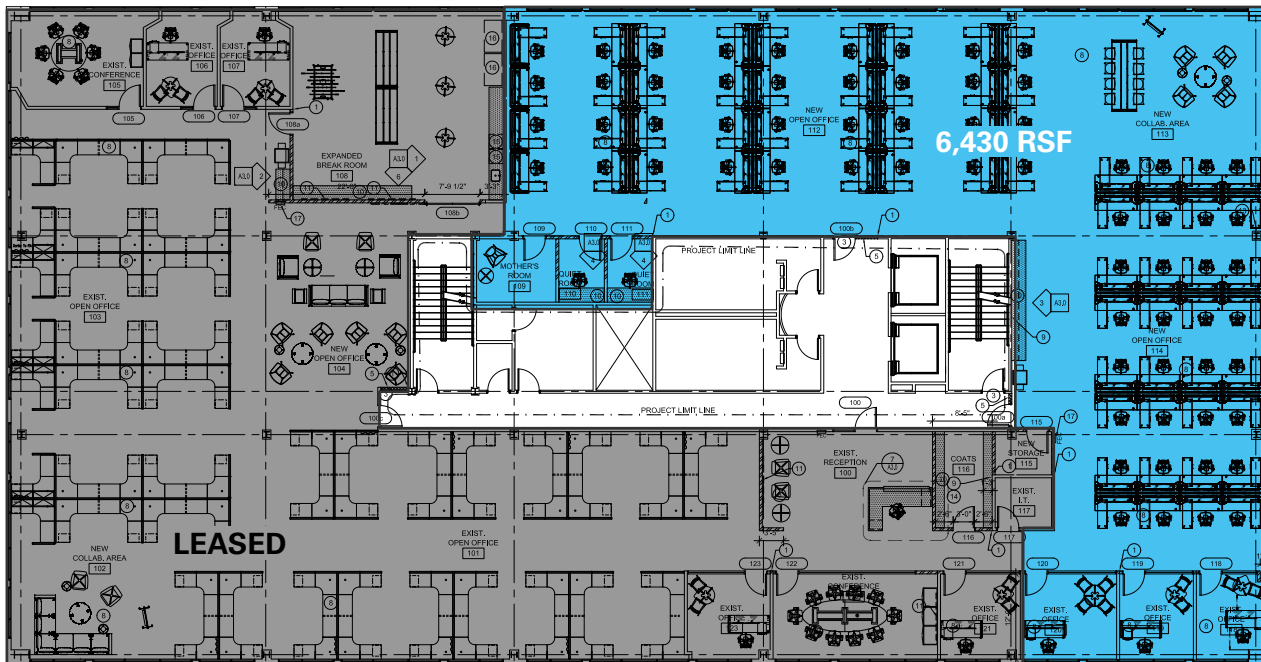
OGDEN JUNCTION OFFICE

FIRST FLOOR - BUILDOUT IN PROGRESS - 2,523 RSF



FLOOR PLANS

SECOND FLOOR - 6,430 RSF



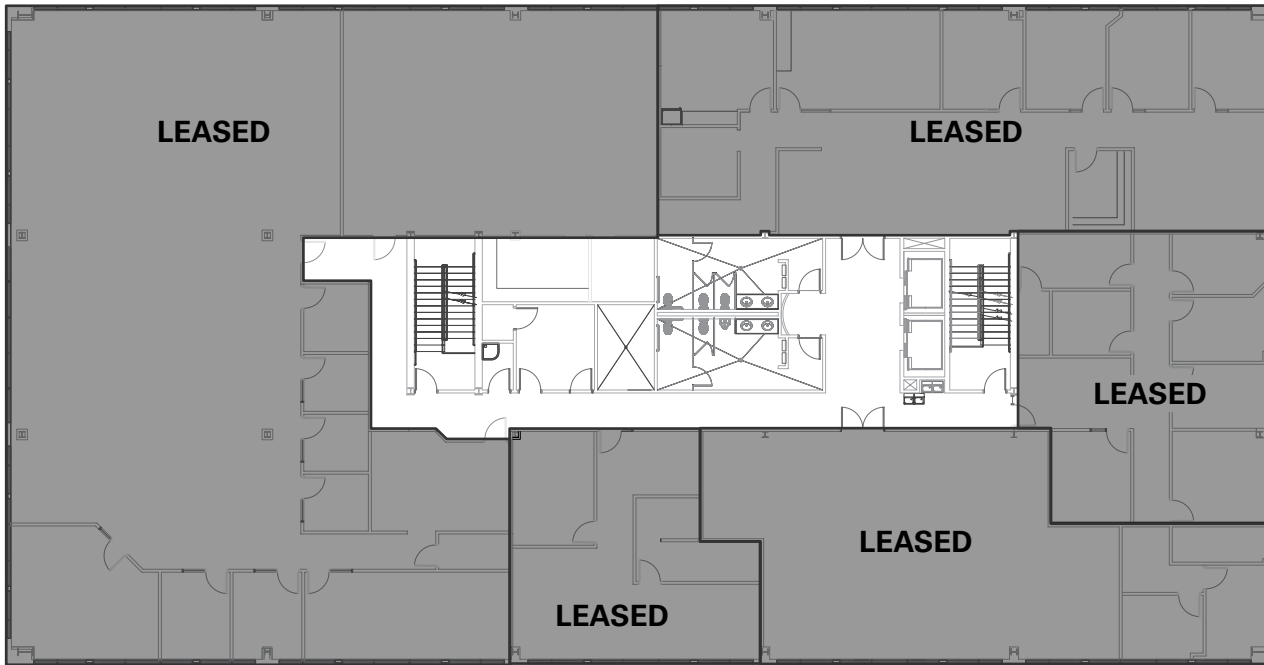
CHRIS FALK, CCIM, SIOR
cfalk@newmarkmw.com
direct 801.499.6514
[View Profile](#)

BRAXTON WILLIE, CCIM
bwillie@newmarkmw.com
direct 801.803.3334
[View Profile](#)

**FULL SERVICE
COMMERCIAL REAL ESTATE**
1410 S University Park Blvd, Ste 120
Clearfield, Utah 84015
Office 801.578.5580
www.newmarkmw.com

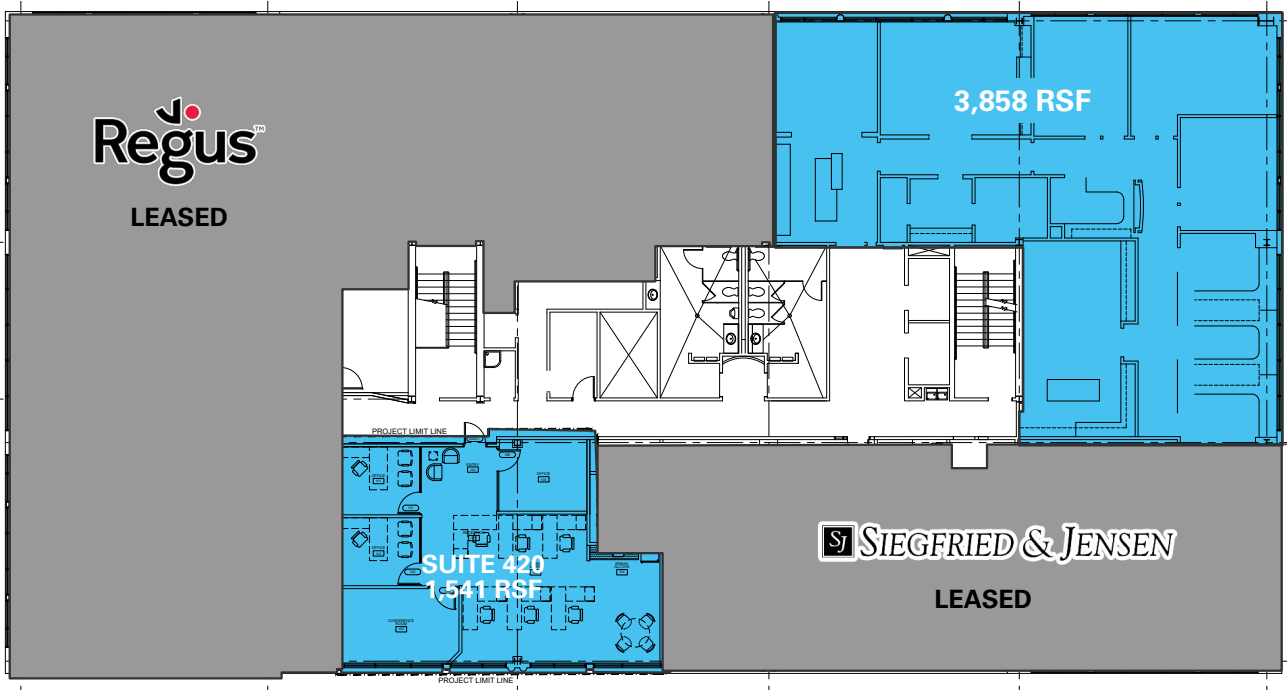
OGDEN JUNCTION OFFICE

THIRD FLOOR



FLOOR PLANS

FOURTH FLOOR - 5,399 RSF - FF&E COULD BE NEGOTIATED



CHRIS FALK, CCIM, SIOR
cfalk@newmarkmw.com
direct 801.499.6514
[View Profile](#)

BRAXTON WILLIE, CCIM
bwillie@newmarkmw.com
direct 801.803.3334
[View Profile](#)

**FULL SERVICE
COMMERCIAL REAL ESTATE**
1410 S University Park Blvd, Ste 120
Clearfield, Utah 84015
Office 801.578.5580
www.newmarkmw.com



CHRIS FALK, CCIM, SIOR
 cfalk@newmarkmw.com
 direct 801.499.6514
[View Profile](#)

BRAXTON WILLIE, CCIM
 bwillie@newmarkmw.com
 direct 801.803.3334
[View Profile](#)

**FULL SERVICE
 COMMERCIAL REAL ESTATE**
 1410 S University Park Blvd, Ste 120
 Clearfield, Utah 84015
 Office 801.578.5580
www.newmarkmw.com