



FOR LEASE

# Grandview Office / Warehouse

777 BOWMAN WAY  
GRANDVIEW HEIGHTS, OHIO

## Space Available

± 19,942 SF Office / Warehouse / Lab

## Rental Rate

\$8.50/SF

## Possession

Immediate Occupancy

## Lease Term

1-10 Years

## Year Built

2000

## Property Highlights

- Sought after location across from Grandview Yard
- High ceilings in office space with possibility to covert to creative office environment
- Convenient highway access to South 315 and I-670
- Minutes to Downtown, Grandview Yard, Short North, Arena District, and Grandview Avenue
- Drive-in door; Warehouse clear height from 14'-26'
- 32 paved parking spaces, with space to add more
- Fully temperature controlled
- ± 1,000 SF detached 4-car garage

For information, please contact:

### Wayne Harer, SIOR, CCIM

Executive Managing Director

t 614-883-1051

wayne.harer@nrmk.com

### Brent Stamm, CCIM

Executive Managing Director

t 614-883-1141

brent.stamm@nrmk.com

150 E Broad Street, Suite 500  
Columbus, Ohio 43215



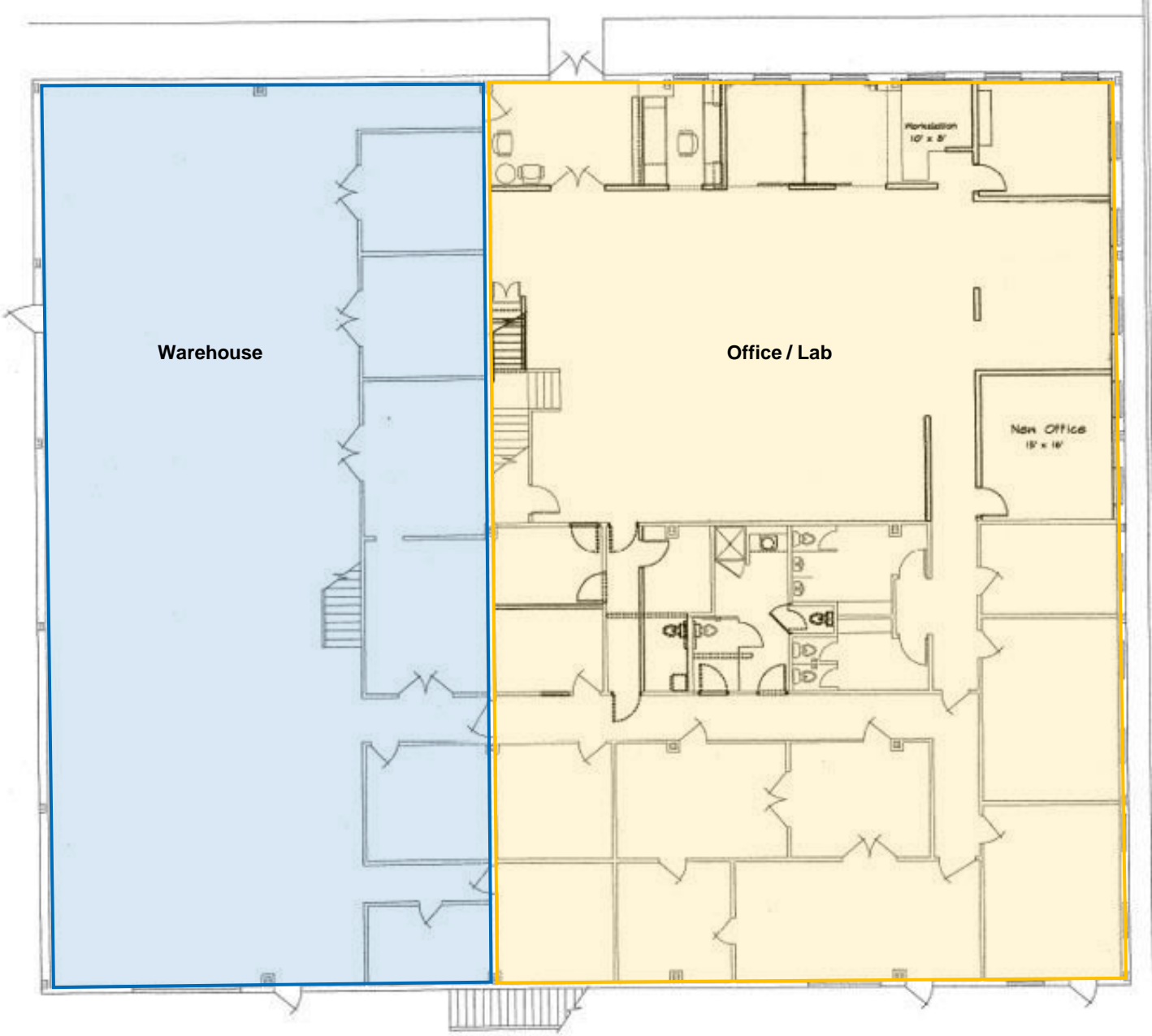
nrmk.com

# NEWMARK

The information contained herein has been obtained from sources deemed reliable but has not been verified and no guarantee, warranty or representation, either express or implied, is made with respect to such information. Terms of sale or lease and availability are subject to change or withdrawal without notice.

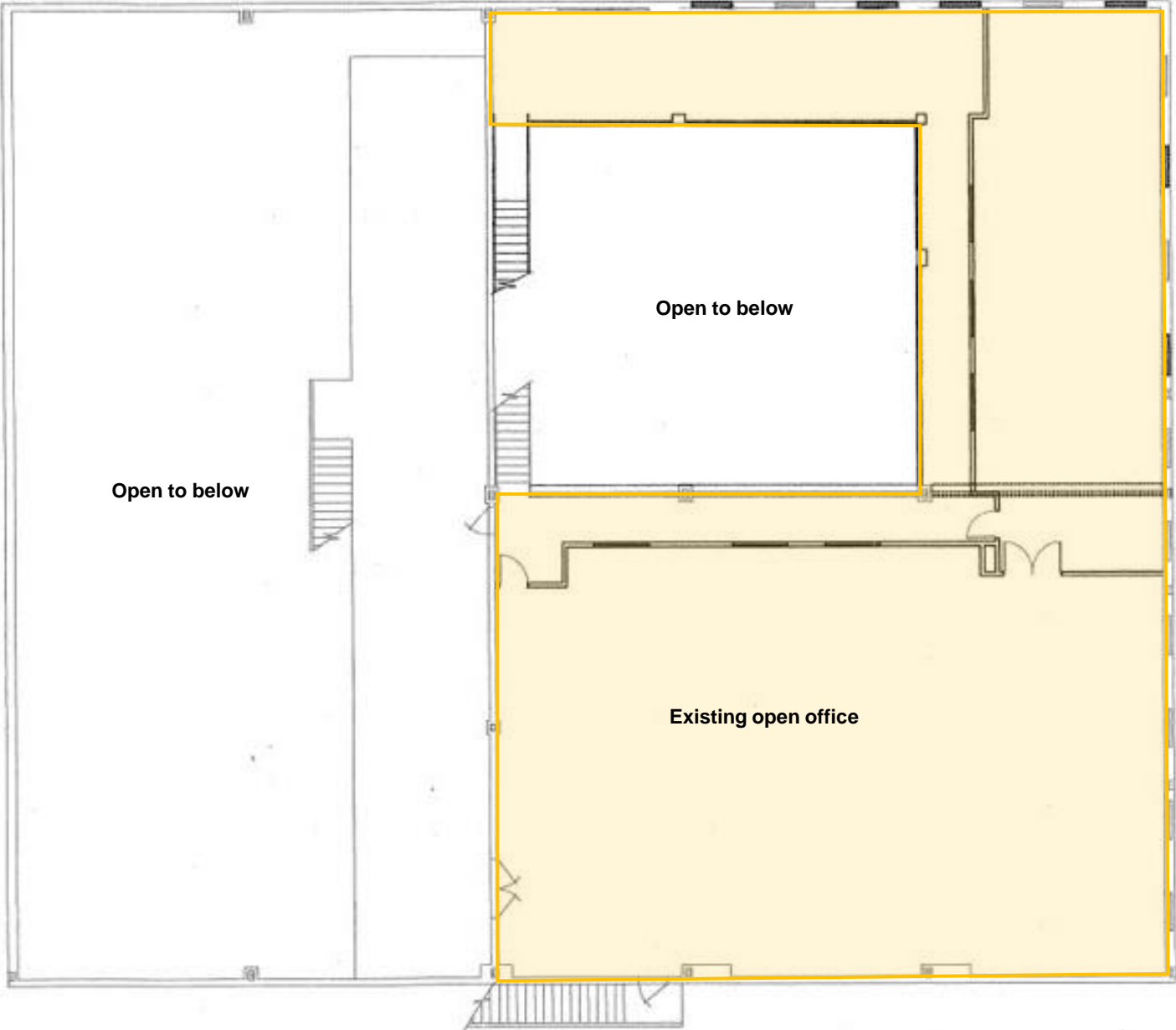
# 777 Bowman Way

1<sup>st</sup> Floor



# 777 Bowman Way

2<sup>nd</sup> Floor



# 777 Bowman Way

