



# FOR LEASE

SPACE AVAILABLE

**670**  
SQFT

RENT

**\$1350**  
/PER MONTH

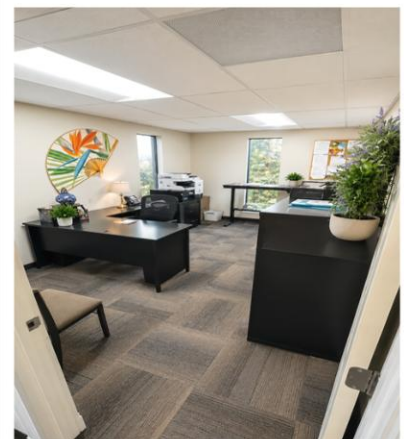
LEASE TYPE

**Full Lease /  
Gross Lease**

OCCUPANCY

**August 1<sup>st</sup>, 2026**

**BLDG B - SUITE 311 - 112 NORTH UNIVERSITY ROAD SPOKANE VALLEY, WA**



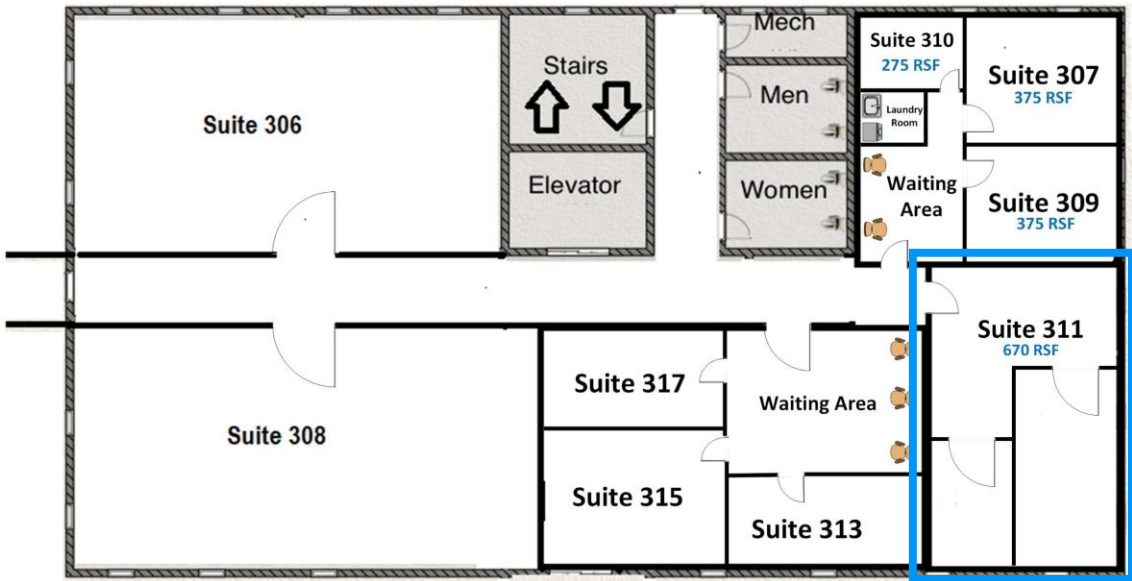
- Professional Office Building featuring a sky bridge connection.
- High-visibility monument signage available in front of the building.
- High Ceilings enhancing openness and natural light.
- Professional waiting area with welcoming client entry.
- Multi-office suite offering 2 private enclosed offices.
- High-Speed Optic Fiber Internet infrastructure in place.
- After-hours secure entry access control system
- Abundant On-Site Parking for employees and visitors

|  |  |   |   |
|--|--|---|---|
| <b>SPACE AVAILABLE</b><br><b>670</b><br>SQFT | <b>LEASE RATE</b><br><b>\$1350</b><br>/PER MONTH | <b>LEASE TYPE</b><br><b>Full Lease/<br/>Gross Lease</b> | <b>OCCUPANCY</b><br>August 1 <sup>st</sup> , 2026 |
|--|--|---|---|

## BLDG B - SUITE 311 - 112 NORTH UNIVERSITY ROAD SPOKANE VALLEY, WA

### FLOOR PLAN

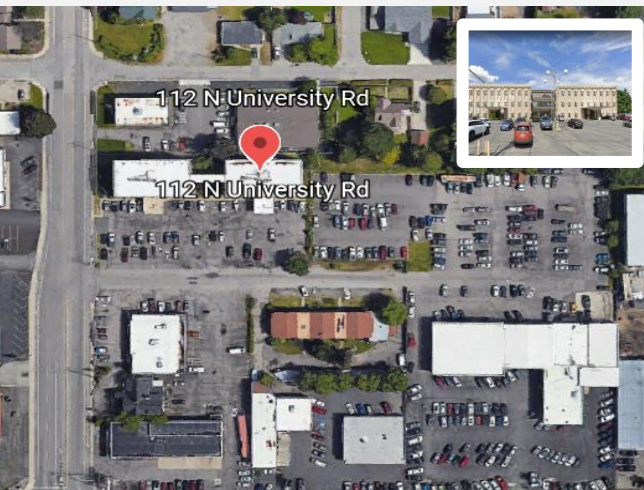
VPC Building B Floor 3



 [TOUR VIDEO](#)

 [LOOPNET](#)

### LOCATION



### CONTACT

**Suresh Muthuswamy**  
[suresh@asaprs.com](mailto:suresh@asaprs.com)  
 Cell: 425.442.6431

**Sathesh Natarajan**  
 Cell: 425.222.2530

[contact@asaproperties.net](mailto:contact@asaproperties.net)  
[www.asaproperties.net](http://www.asaproperties.net)