



Wayne Plaza

Chambersburg, PA

Chambersburg-Waynesboro (PA)

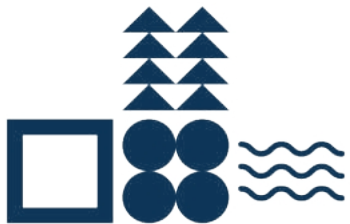


Michael Reigner
Leasing Representative
(410) 427-4442
mreigner@kimcorealty.com





AERIAL



GROSS LEASABLE AREA (GLA)	131,623 SF
PARKING SPACES	717
PARKING RATIO	5.45 per 1,000 SF

Michael Reigner

Leasing Representative | (410) 427-4442 | mreigner@kimcorealty.com



Google Earth

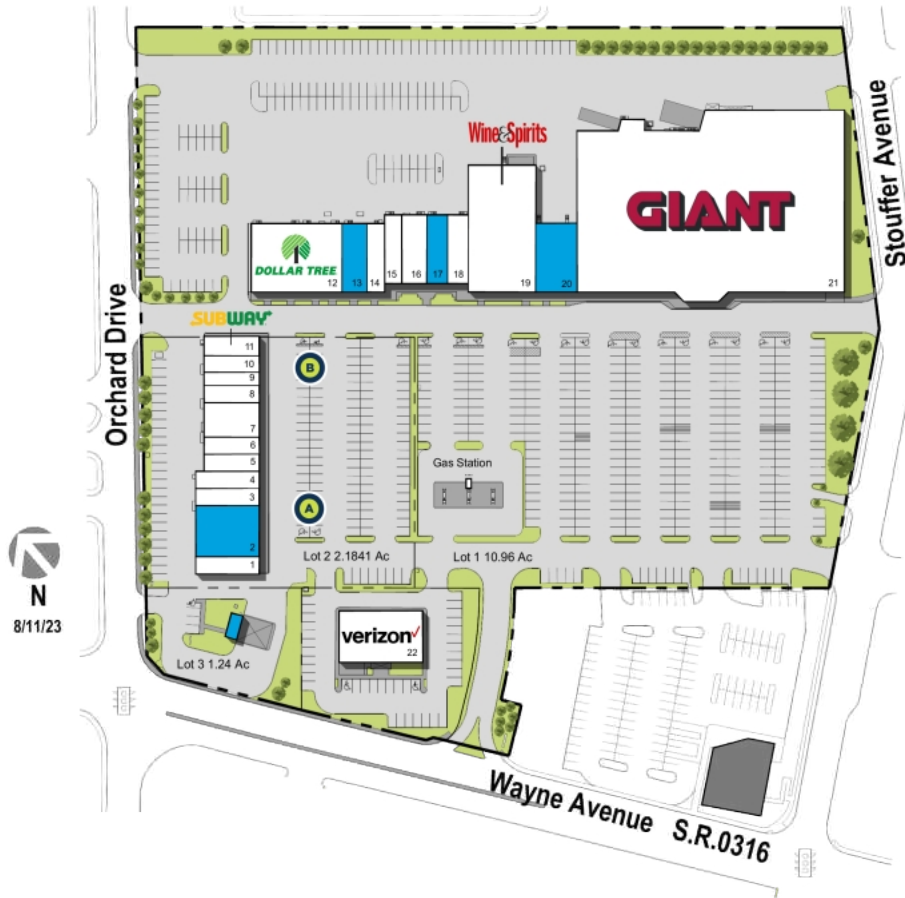
DENSITY AERIAL

Michael Reigner

Leasing Representative | (410) 427-4442 | mreigner@kimcorealty.com



■ Available ● Curbside Pick-up



	TENANT	SQ FT
1	Puff-N-Snuff	1,500
2	Available	4,500
3	The UPS Store	1,500
4	Jackson Hewitt Tax Service	1,500
5	Queen Nails	1,300
6	Holiday Hair	1,300
7	Volcano Japanese Restaurant	2,600
8	The Laundry Quarters	1,300
9	Wayne Cleaners	1,040
10	China Wok	1,235
11	Subway	1,495
12	Dollar Tree	8,732
13	Available	2,400
14	Papa Johns	1,600
15	Surge Staffing	1,600
16	Mariner Finance	2,400
17	Available	2,000
18	All Brand Vacuum	2,000
19	Wine & Spirits Shoppe	11,309
20	Available	4,000
21	Giant Food Supermarket	67,521
22	Verizon Wireless	6,000
23	Giant Fueling Station	2,400
24	Available	391

Disclaimer: This site plan shows the approximate location, square footage, and configuration of the shopping center and adjacent areas, and is only illustrative of the size and relationship of the stores and common areas generally, all of which are subject to change. The showing of any names of tenants, parking spaces, square footage, curb-cuts or traffic controls shall not be deemed to be a representation or warranty that any tenants will be at the shopping center, the square footage is accurate, or that any parking spaces, curb-cuts or traffic controls do or will continue to exist. Moreover, any demographics set forth in this flyer are for illustrative purposes only and shall not be deemed a representation by Landlord or their accuracy. Availability of this property for rent is subject to prior rental or withdrawal of the property from the market at any time without notice.

Michael Reigner

Leasing Representative | (410) 427-4442 | mreigner@kimcorealty.com

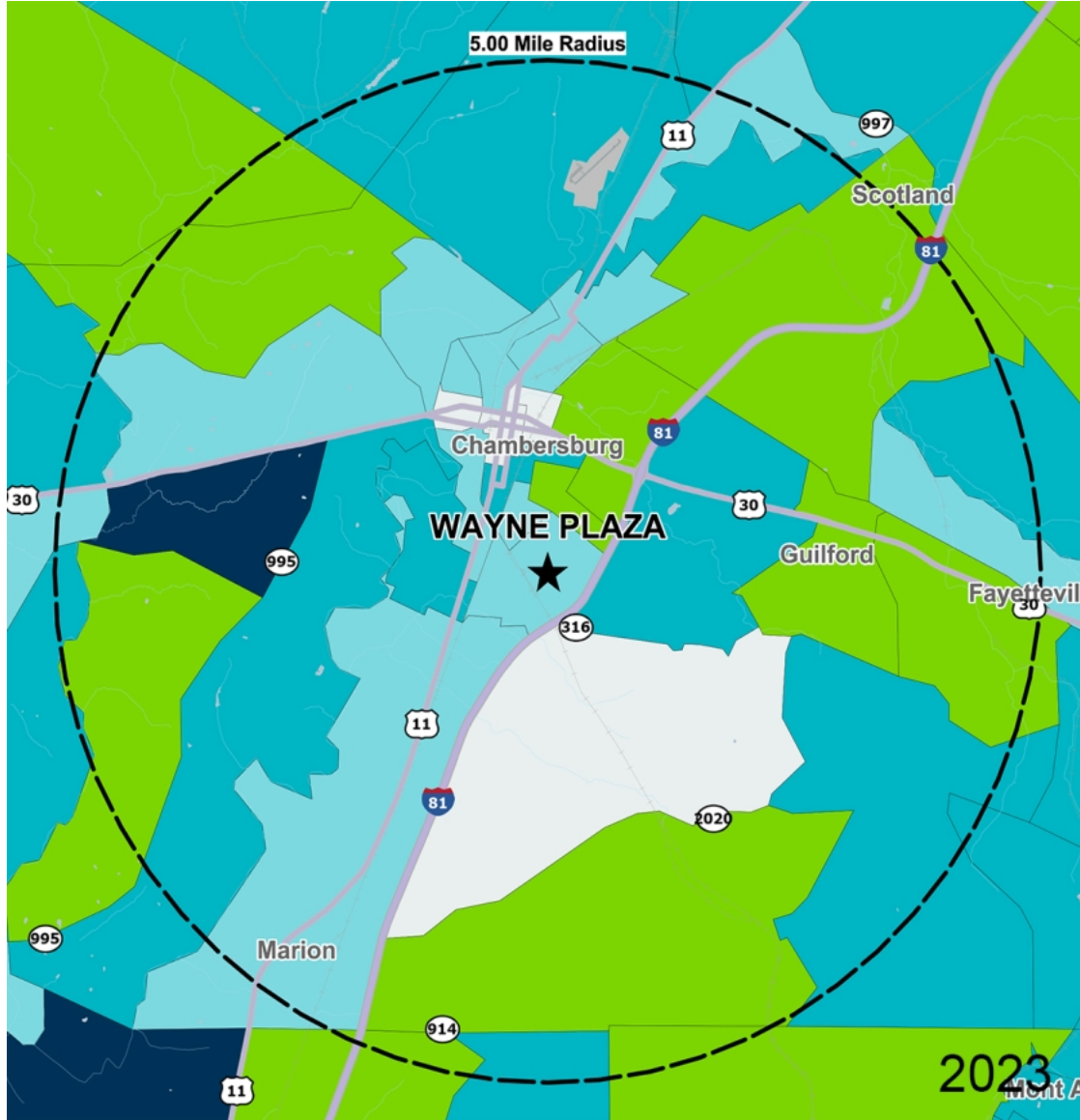


Revision Date: 04/24/20
Original Date:

COMPETITION MAP

Michael Reigner

Leasing Representative | (410) 427-4442 | mreigner@kimcorealty.com



by Block Group

Demographics

2023 ESTIMATES	1-MILE	3-MILES	5-MILES
Population	5,911	32,539	51,914
Daytime Pop	9,627	45,927	61,801
Households	2,654	13,217	20,904
Average HH Income	\$75,292	\$77,994	\$88,018
Median HH Income	\$51,918	\$57,625	\$65,910
Per Capita Income	\$34,813	\$32,458	\$35,994

Average Household Income

Popstats, 4Q 2023, Trade Area Systems

- \$150K and up
- \$100K - \$150K
- \$75K - \$100K
- \$50K - \$75K
- \$0K - \$50K



Wayne Plaza

Wayne Ave. & Stouffer Ave., Chambersburg, PA



Michael Reigner

Leasing Representative

(410) 427-4442

mreigner@kimcorealty.com