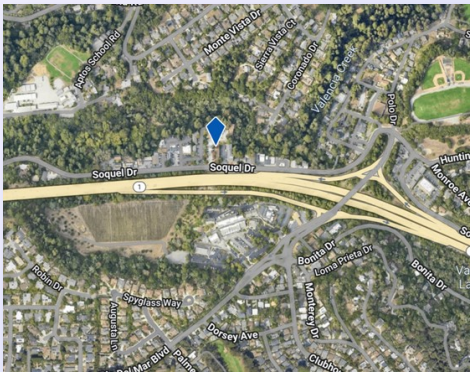


AVAILABLE FOR LEASE

9057 SOQUEL DRIVE, BLDG C/SUITE B, SOQUEL, CA

PRIMIER OFFICE SPACE FOR LEASE



- PREMIER OFFICE AVAILABLE
- BUILDING C, SUITE B: ± 2,204 SF
- GOOD MIX OF PRIVATE OFFICE AND OPEN AREAS
- GREAT VIEW FROM OFFICES
- SECLUDED, QUIET ENVIRONMENT
- FIRE SUPPRESSION SYSTEM
- OUTDOOR SEATING/PICNIC AREA
- LOCATED NEXT TO HWY 1
- LEASE RATE \$2.20/SF PER MONTH ON A MODIFIED GROSS BASIS
CAM CHARGES \$0.39/SF



JIM WISEMAN

831-818-5454

DRE #01104278

jwiseman@sheldonwiseman.com



While the information contained herein is deemed reliable, we cannot guarantee its accuracy. All information should be verified.

1200 Pacific Avenue, Suite 390 ■ Santa Cruz, CA 95060

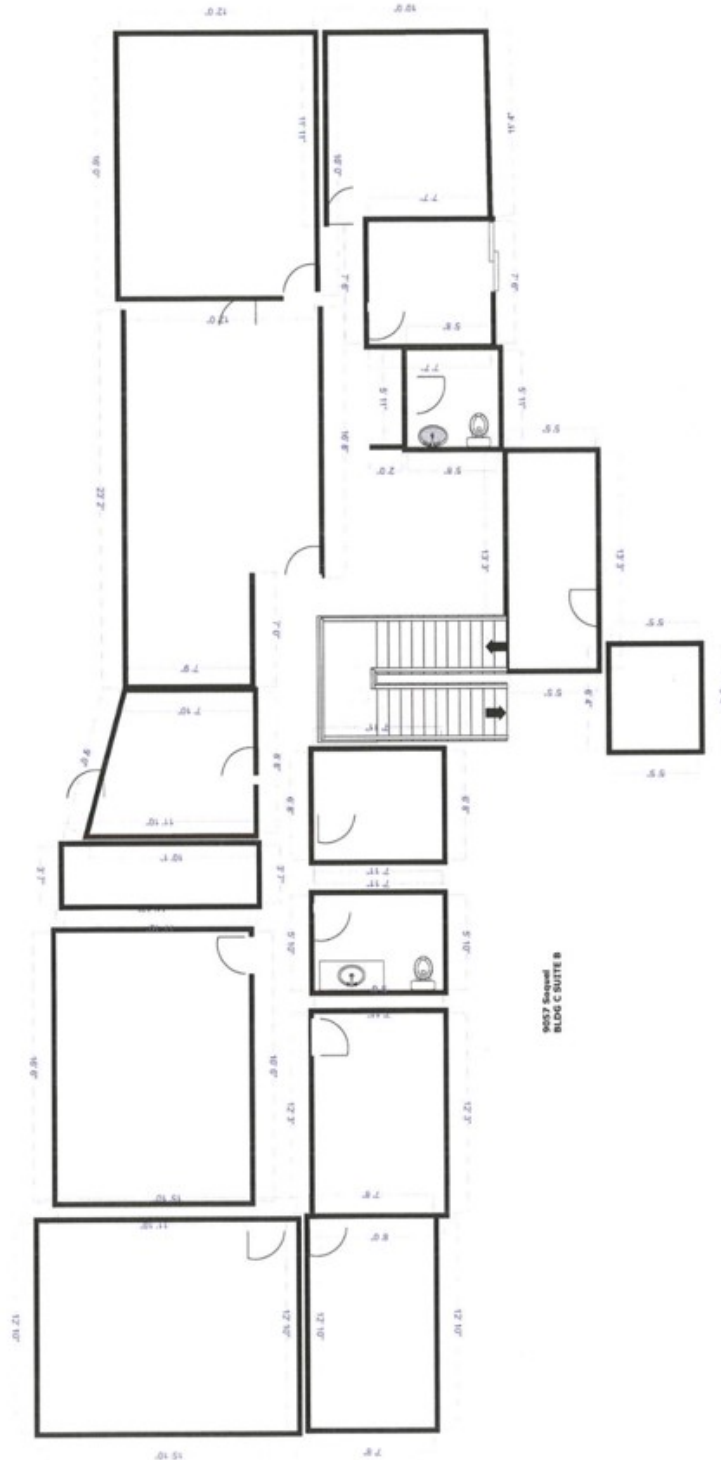
Tel: 831 • 454 • 9400 ■ Fax: 831 • 459 • 7988 ■ www.sheldonwiseman.com

INTEGRITY ■ SERVICE ■ RESULTS

FLOOR PLAN

**9057 SOQUEL AVE
BUILDING C, SUITE B**

± 2,204 SF

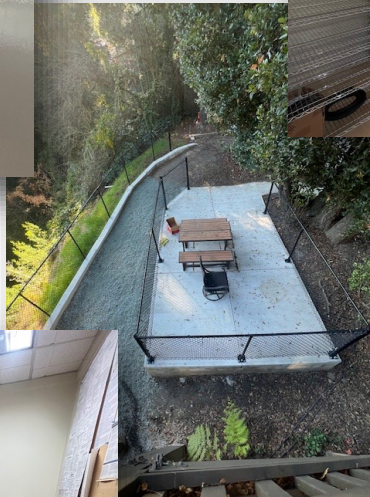
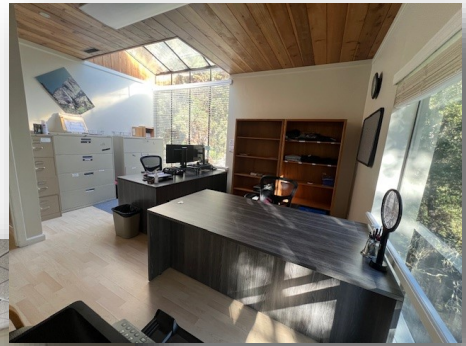


While the information contained herein is deemed reliable, we cannot guarantee its accuracy. All information should be verified.

INTEGRITY ■ SERVICE ■ RESULTS



INTERIOR/EXTERIOR PHOTOS



While the information contained herein is deemed reliable, we cannot guarantee its accuracy. All information should be verified.

INTEGRITY ■ SERVICE ■ RESULTS

