



FOR LEASE

ARVEST TOWER 2ND GENERATION CLASS A OFFICE SPACE

Key Features

A rare opportunity to lease three contiguous upper floors in one of Downtown Oklahoma City's most recognizable office towers. These premier floors offer expansive views of the city skyline and flexible layouts

Building Description

- Building Size: ± 203,007 RSF | 17 Stories
- Garage Parking: 416 Spaces
- >> Premium Underground Parking Available
- 21 minutes away from Will Rogers World Airport
- Typical Floor: ±9,500 RSF
- Year Built: 1972 / 2018
- *Floors 15 and 16 are offered as a combined leasing opportunity*

Available RSF

±29,655

Asking Price

\$22.00 FSG

COMMERCIAL
OKLAHOMA

Travis Mason

+1 405 297 9924

tmason@commerciaoklahoma.com

Micah Sherman, CCIM

+1 405 488 5548

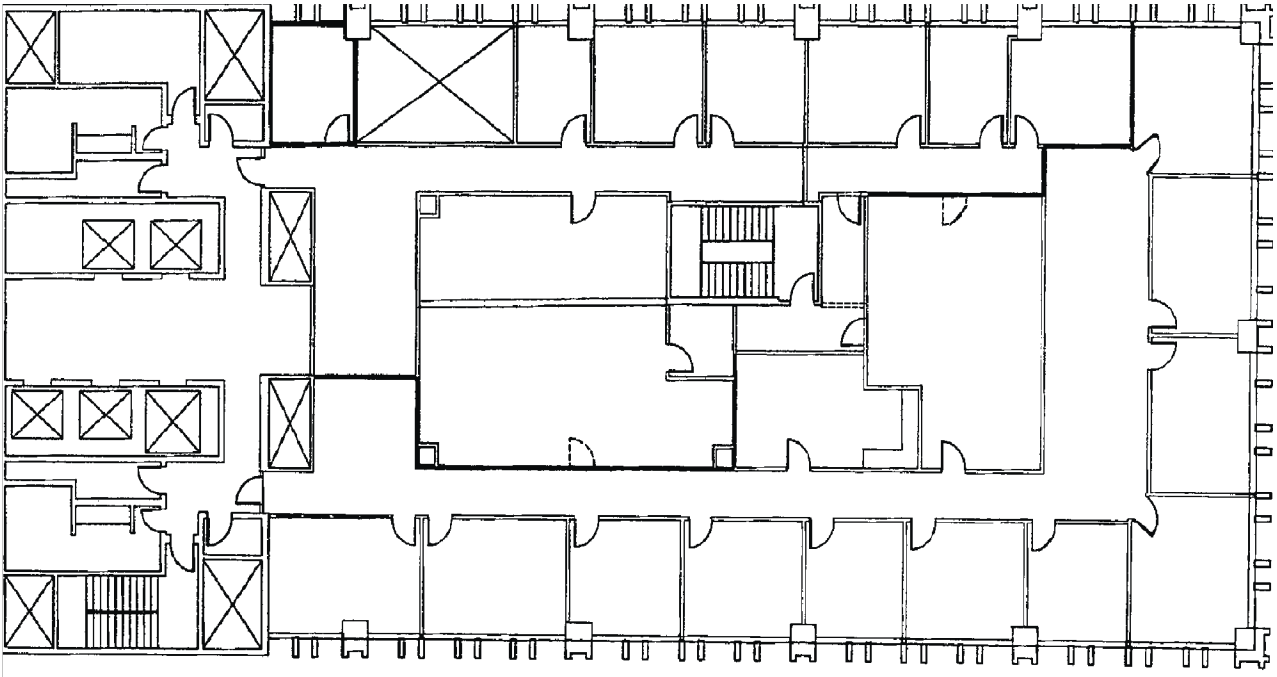
msherman@commercialoklahoma.com

Vivienne Vogler

+1 405 570 8595

vvogler@commercialoklahoma.com

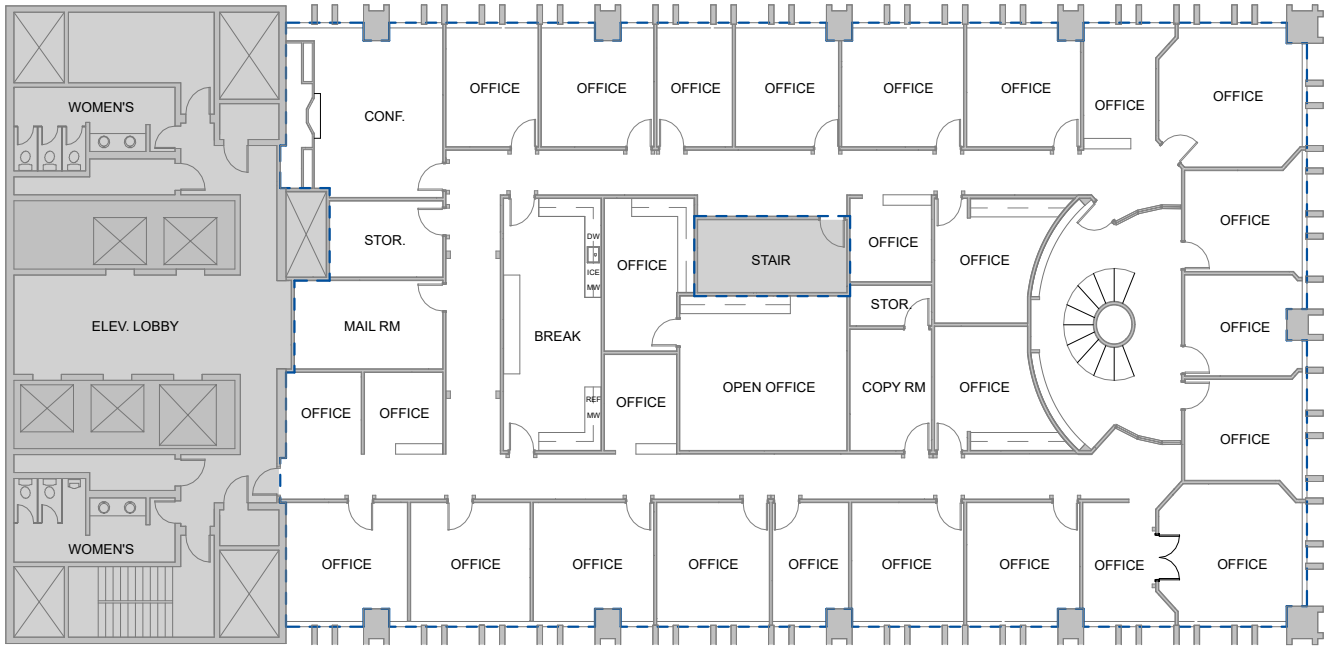
[commercialoklahoma.com](https://www.commercialoklahoma.com)



FOR LEASE

14TH FLOOR ± 9,885 SF

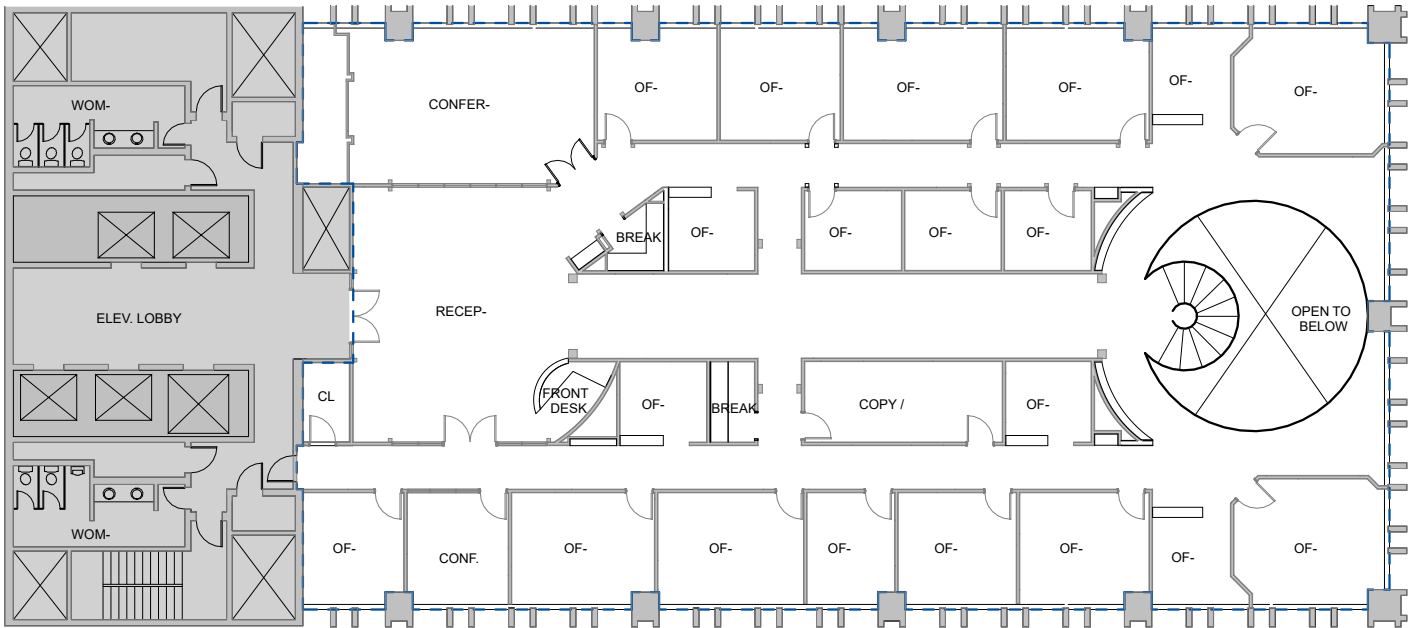




FOR LEASE

15TH FLOOR ± 9,885 SF





FOR LEASE

16TH FLOOR

± 9,885 SF



