

# For Lease



## Building Information

- Small **Office** spaces
  - **Unit H7** – 1,298 sf office
- Monument Signage Available
- Surface Parking
- Common forklift for tenant use
- Separately Metered & Sub-Metered Utilities to units: (Gas, Water, Sewer, Electric) only pay for what you use.

**RCH**  
Company

For Information

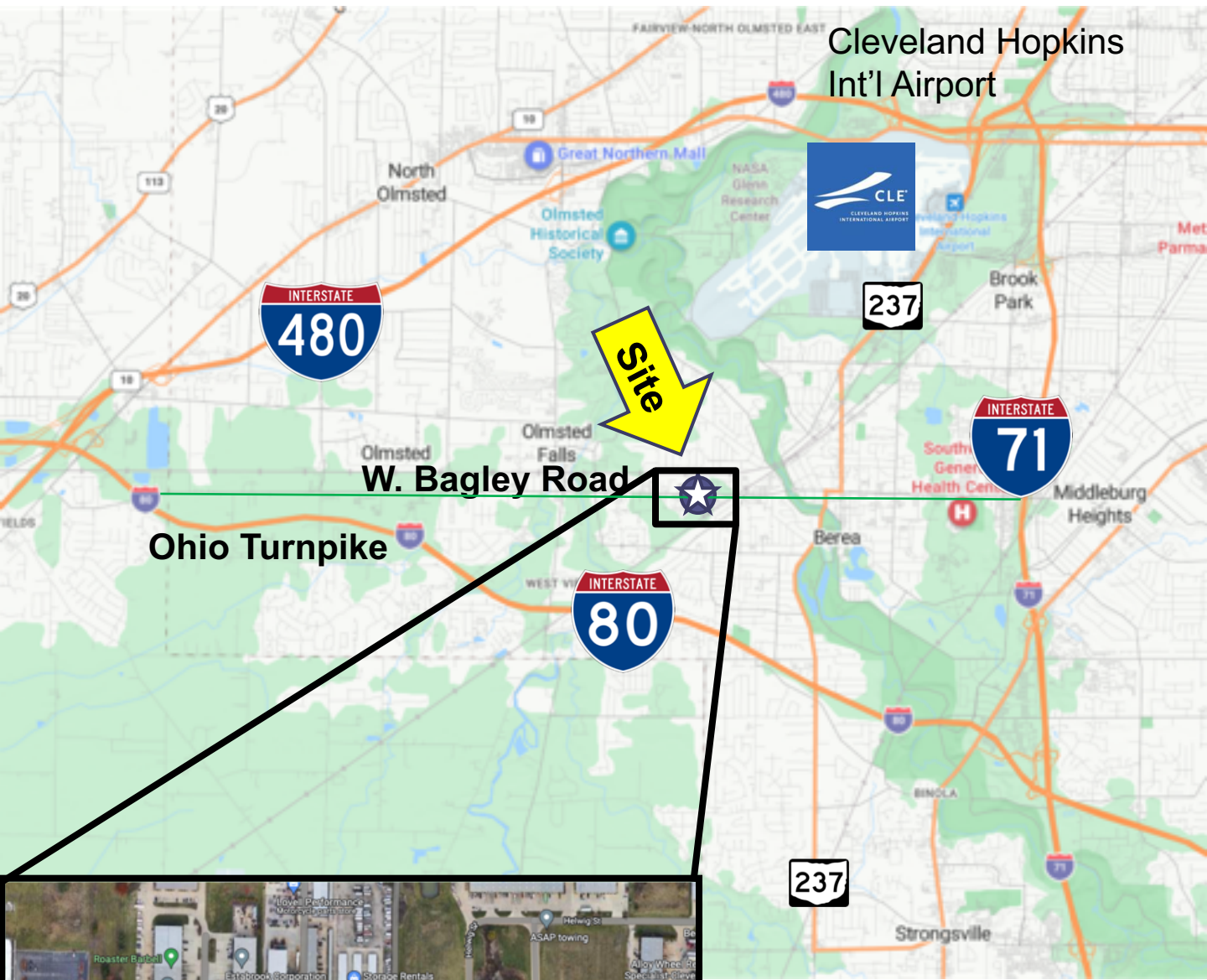
Contact:

**Mike Hugel, CCIM**

[Mike@HugeREA.com](mailto:Mike@HugeREA.com)

**(972) 333-4151**





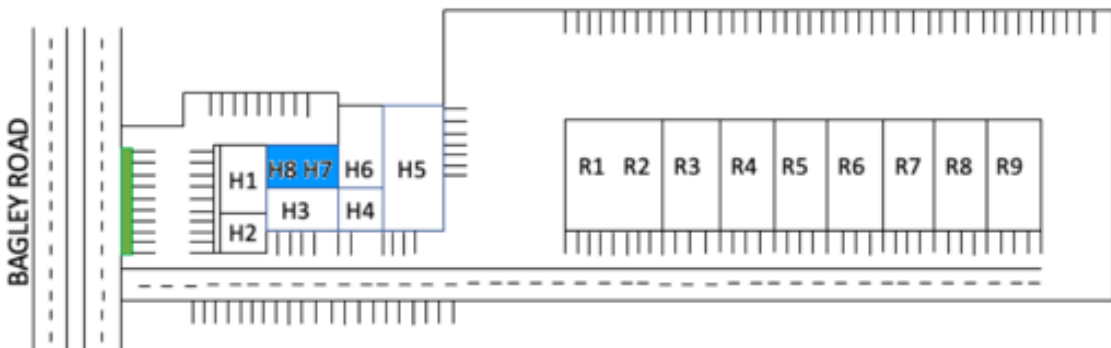
Located 5 minutes from Cleveland Hopkins Int'l Airport and major thoroughfares.



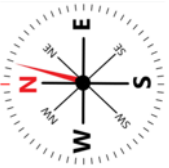
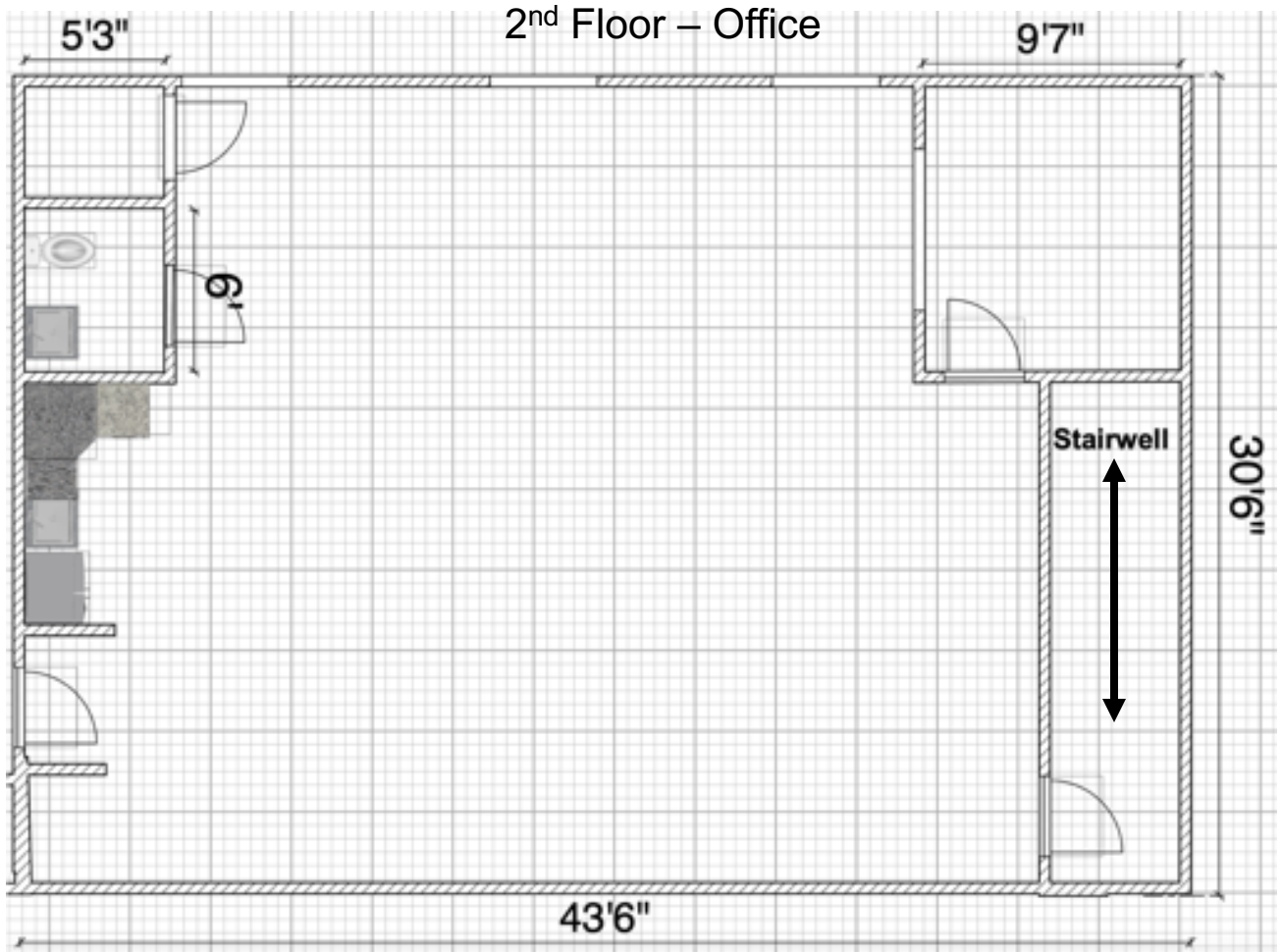


**Unit H7 – 1,298 sf**

- **Office area** is located on the 2<sup>nd</sup> floor and is configured with 1 built in office and balance open area to accommodate cubicles or light production, Updated with LED lighting, private restroom, break area with granite counter tops, dishwasher and room for fridge and microwave. (tenant controlled heating & cooling).



**Unit H7 – 1,298 sf**



Monument Signage available for all tenants. Building signage is also available subject to architectural standards.



## Unit H7 Interior of 2<sup>nd</sup> Floor Office area



**2<sup>nd</sup> Floor Office area with Open area for cubicles. Tenant controlled HVAC, break area with dishwasher, granite counters, pvt. Restroom.**

2<sup>nd</sup> Floor shown in Yellow

