



FUTURE DEVELOPMENT & AGRICULTURE LAND

942 391 904 +2 & 962 102 225, Fort Saskatchewan & Strathcona County, AB

Property Highlights

- Roughly 20 acres within Fort Saskatchewan are slated for residential development
- Extreme proximity to existing development
- Minutes from Walmart, Canadian Tire, Dow Centennial Centre, Fort Saskatchewan Community Hospital, Starbucks, and more!
- Relatively flat land
- Ongoing farming potential
- Great access to both 111.34 and 160 acres parcels

Alberta Land Title	42 391 904 +2 and 962 102 225
Lot Size	± 271.34 Acres
Zoning	(AG) Agricultural General (AG-S) Agricultural General South
Sale Price	\$3,950,000.00
Price Per Acre	\$14,557.38/Acre



[View On Maps](#)



[View On Street](#)



[Property Tour](#)

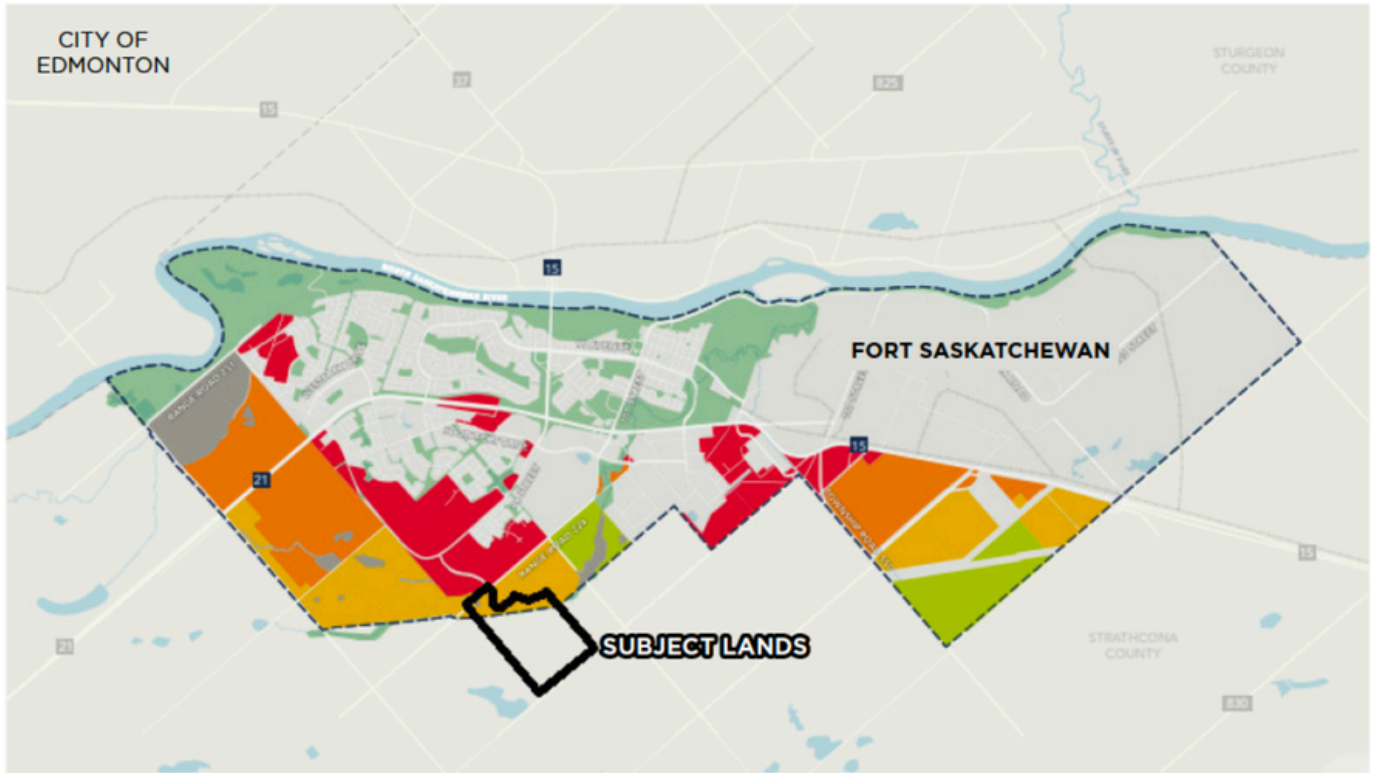
CHRISTIAN JONES, Vice President

(780) 716-2851 | 1988jones@gmail.com

REMAX
Excellence

REMAX
COMMERCIAL

DEVELOPMENT STAGING



- Undevelopable
- Immediate Term
- Near Term
- Medium Term
- Long Term

**Map is representative of the order of development.
Timing of development will be dependent on growth rates.
The terms shown are separate from those defined for implementation.*





CONTACT:

CHRISTIAN JONES

Vice President

☎ (780) 716-2851

✉ 1988jones@gmail.com

