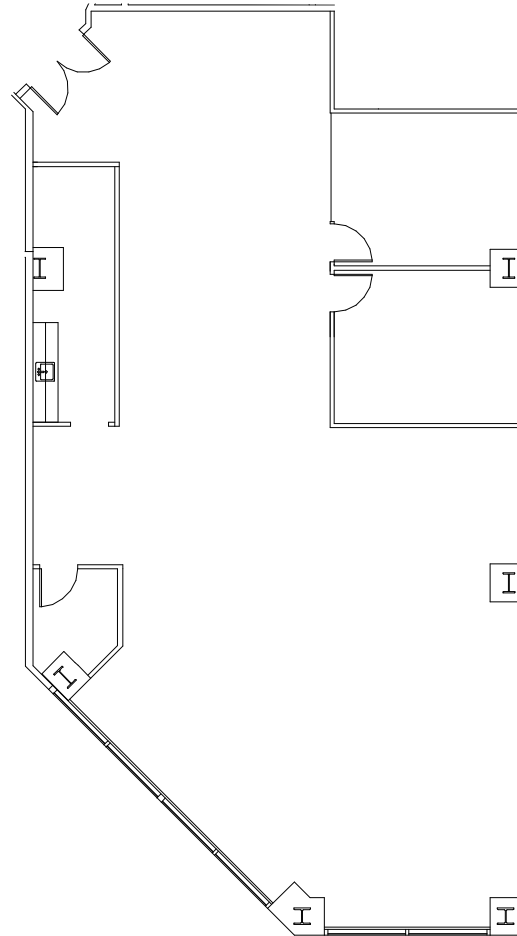
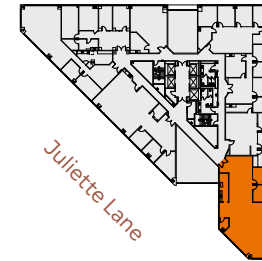
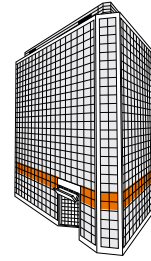


# SUITE 390

±3,416 SF | AVAILABLE NOW

- 1 Conference Room
- 1 Private Office
- Break Area
- Telco/Storage Room
- Open Area For Desks
- Market Ready



MISSION  
CITY CENTER

## SEAN TOOMEY

+1 408 219 8858  
sean.toomey@jll.com  
RE Lic#: 01350215

## MARYJANE BENGIVENO

+1 408 856 5622  
maryjane.bengiveno@jll.com  
RE Lic#: 0220114

## BRYTE BELLOTTI

+1 408 621 7517  
bryte.bellotti@jll.com  
RE Lic#: 01944321

