

OMNI BUSINESS PARK 7303 BURLESON RD.

SUITE O601 FLOOR PLAN

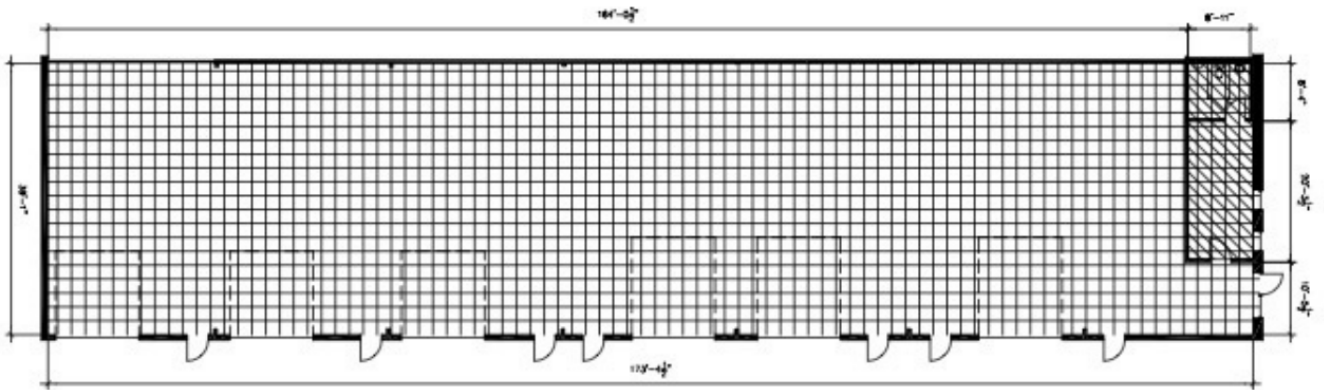
Asking Rent: \$0.90 / SF

Drawing for:
ROUTE SERVICE CENTER, INC.
404 W. Powell, Ste 202
Austin, Texas 78753
Ph: (512) 252-9900

SUITE 601
OMNI BUSINESS PARK
7303 Burleson Rd.
RENTABLE AREA: 7,030 S.F.

THE REVISIONS AND
CORRECTIONS TO THIS
DRAWING SHALL BE
ASSIGNED TO BE 8 WEEK
PROJECT NO: 2020603
REV DATE: August 1, 2020
©2020

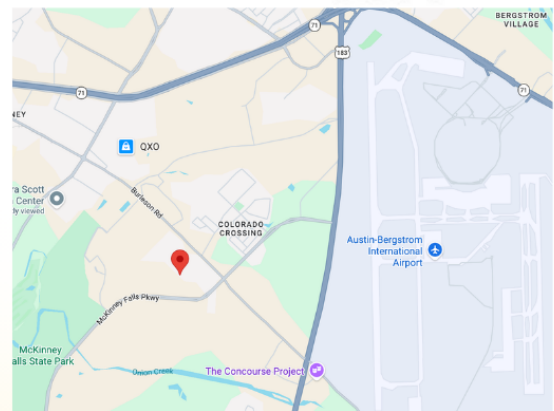
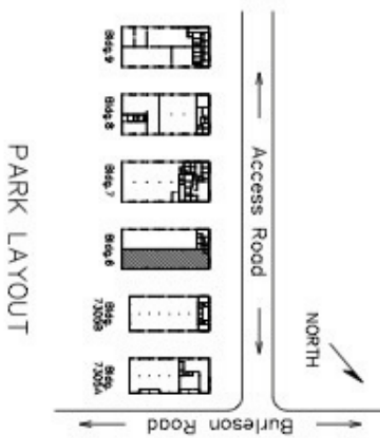
DIMENSIONS
FLOOR PLANS
AUSTIN, TEXAS
DIMENSIONS@LH-LAYNE.COM
PHONE: (512) 252-9900



Office SF = 327
Warehouse SF = 6,703
Total RSF = 7,030

NOTE:
Overlying grid is 2' x 2'.
Not to scale.

 Air Conditioned Area



Contact Information:

(512) 252-9900

404 W Powell Lane, Suite 202, Austin, TX 78753

laynecompany.com