

POINT WEST COMMERCE CENTRE

1545 RIVER PARK DRIVE, SACRAMENTO, CA



CLASS A OFFICES MINUTES
FROM DOWNTOWN @ HWY 80
& ARDEN FAIR MALL

NEWMARK



Exclusively Marketed By:

Jack Blackmon
916.494.2349
jack.blackmon@nrmk.com
CA RE License #01999561

Jodie Robinson
916.569.2318
jodie.robinson@nrmk.com
CA RE License #022143577

Chris Lemmon
916.367.6349
chris.lemmon@nrmk.com
CA RE License #01506816

POINT WEST COMMERCE CENTRE

1545 RIVER PARK DRIVE
SACRAMENTO, CA

PROPERTY HIGHLIGHTS



Onsite training & conference room



Fitness center with showers and lockers



Shaded decks and patios



4.5/1,000 parking



Short walk to Arden Fair Mall



Located within minutes of Sacramento's CBD



Direct access to the Capital City Freeway



Expansive and contiguous windowline



Prominent identity and freeway visibility



Café next door for breakfast and lunch



Basin Street Properties is proud to announce our newest tenant amenity – Concierge Services. Tenants have access to family entertainment, travel arrangements, and a host of other business services.



Personal Services

- Housekeeping / sitting
- Pet sitting / grooming
- Auto detailing / maintenance
- Dry cleaning / laundry
- Fitness trainer / massage services
- Customized personal shopping



Entertainment Services

- Tickets for concerts, theater and sporting events
- Restaurant reservations
- Visiting client and guest arrangements



Event and Meeting Services

- Site selection
- Catering, food and beverage arrangements
- Multi-media / A.V. arrangements

POINT WEST COMMERCE CENTRE

1545 RIVER PARK DRIVE
SACRAMENTO, CA

FIVE-STORY CLASS A OFFICE BUILDING

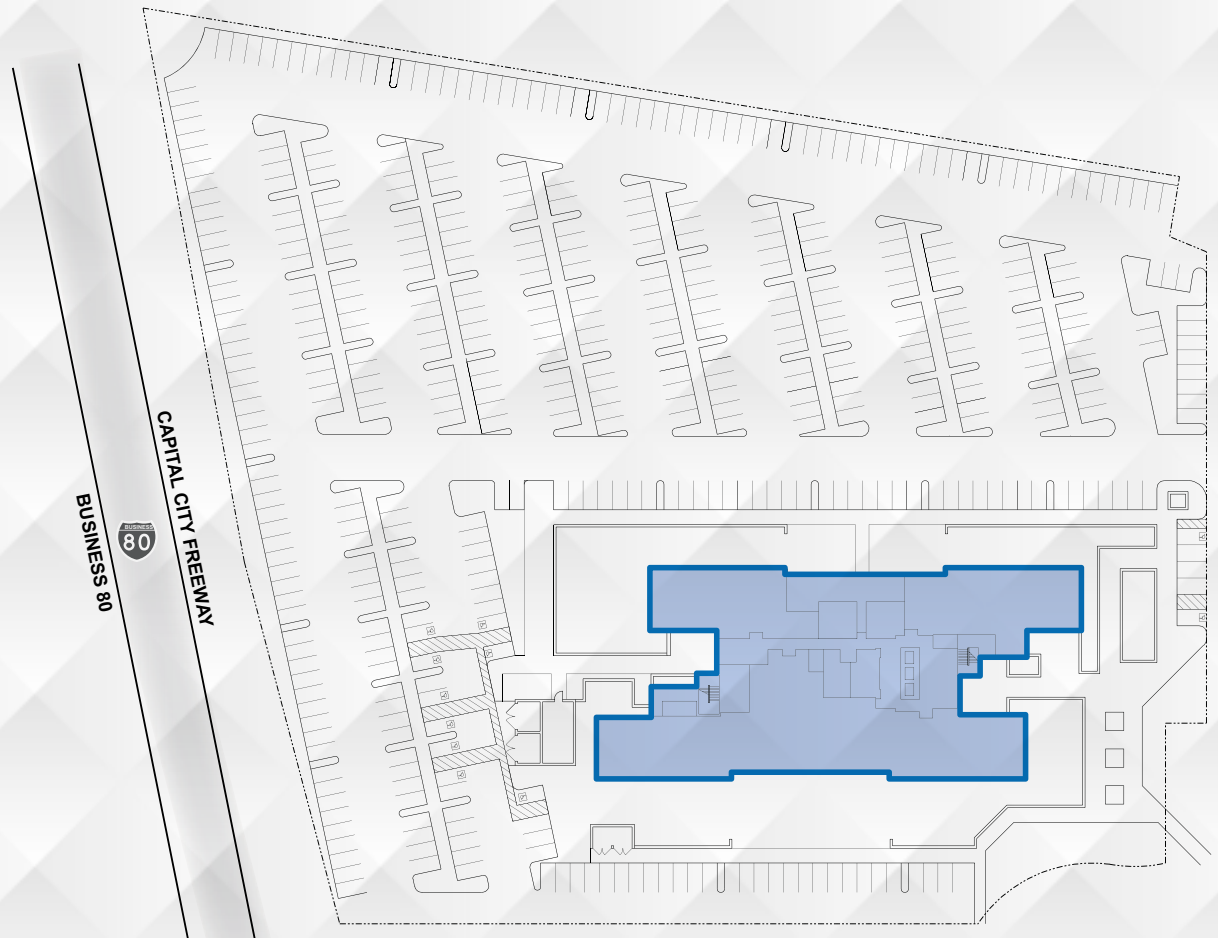


POINT WEST COMMERCE CENTRE

1545 RIVER PARK DRIVE
SACRAMENTO, CA



SITE PLAN



POINT WEST COMMERCE CENTRE

1545 RIVER PARK DRIVE
SACRAMENTO, CA

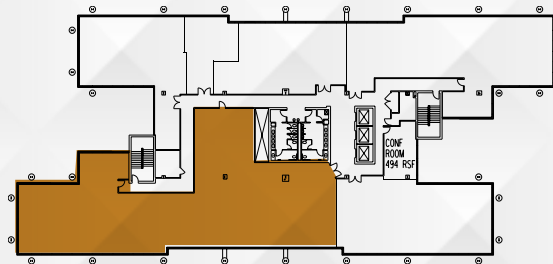
AMENITIES MAP



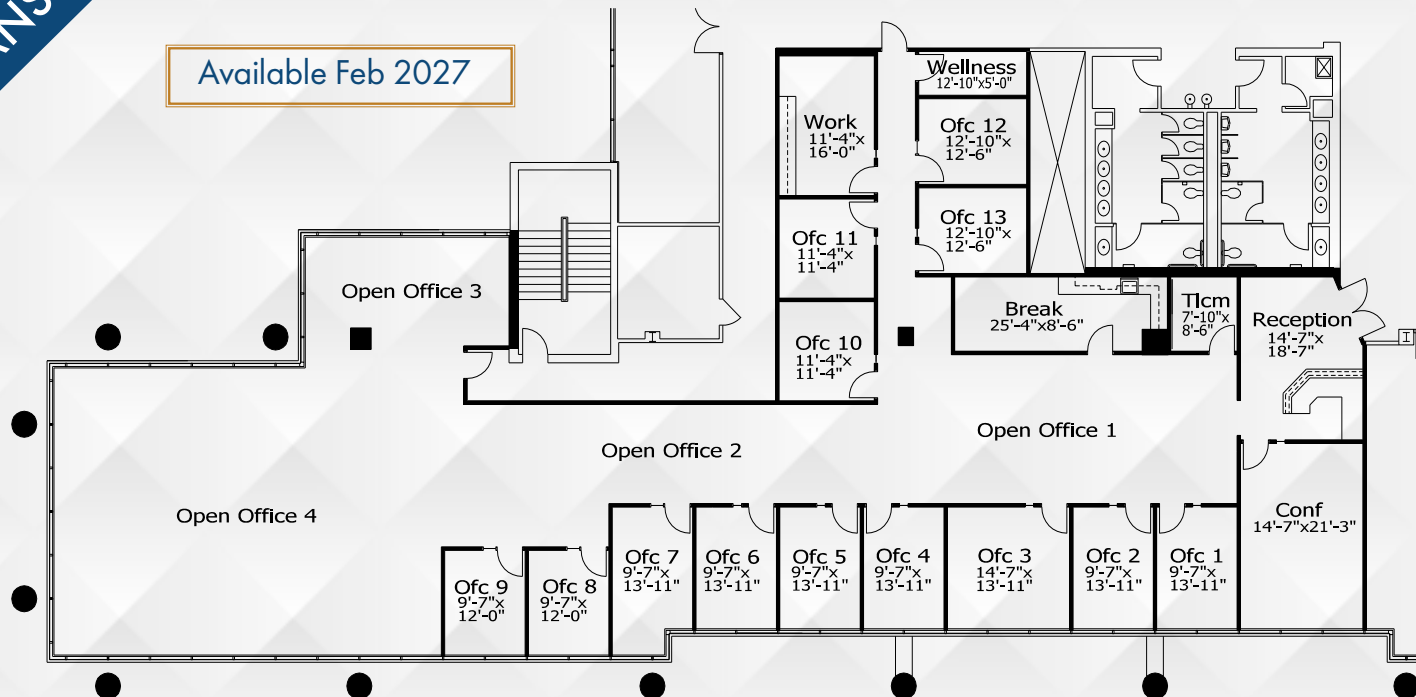
POINT WEST COMMERCE CENTRE

1545 RIVER PARK DRIVE
SACRAMENTO, CA

FLOOR PLANS



Available Feb 2027

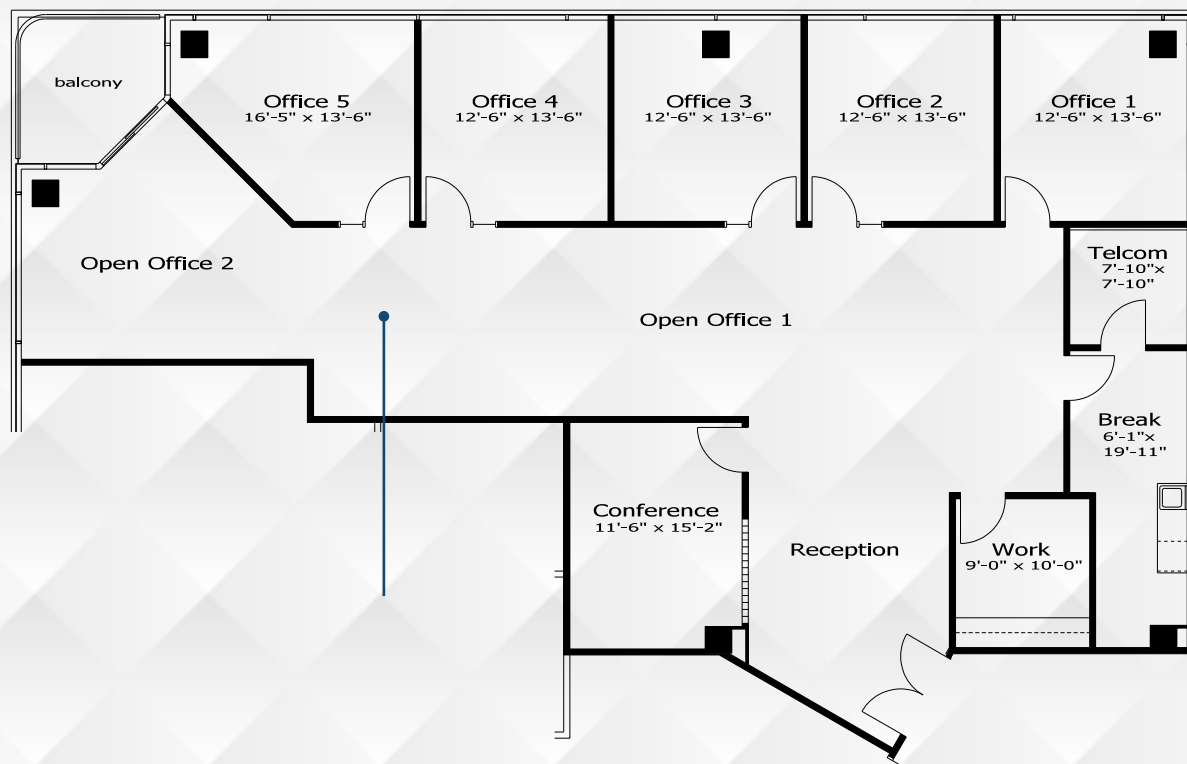
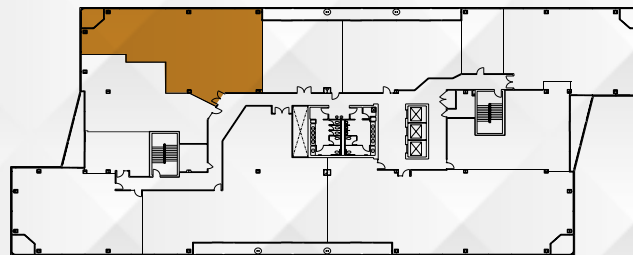


SECOND FLOOR | 7,681 RSF | SUITE 201

POINT WEST COMMERCE CENTRE

1545 RIVER PARK DRIVE
SACRAMENTO, CA

FLOOR PLANS

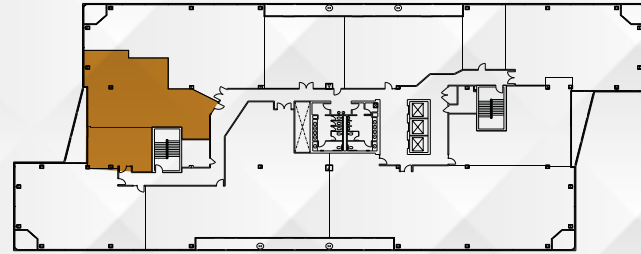


FOURTH FLOOR | 3,145 RSF | SUITE 411

POINT WEST COMMERCE CENTRE

1545 RIVER PARK DRIVE
SACRAMENTO, CA

FLOOR PLANS



FOURTH FLOOR | 2,791 RSF | SUITE 428

POINT WEST COMMERCE CENTRE

1545 RIVER PARK DRIVE
SACRAMENTO, CA



FLOOR PLANS

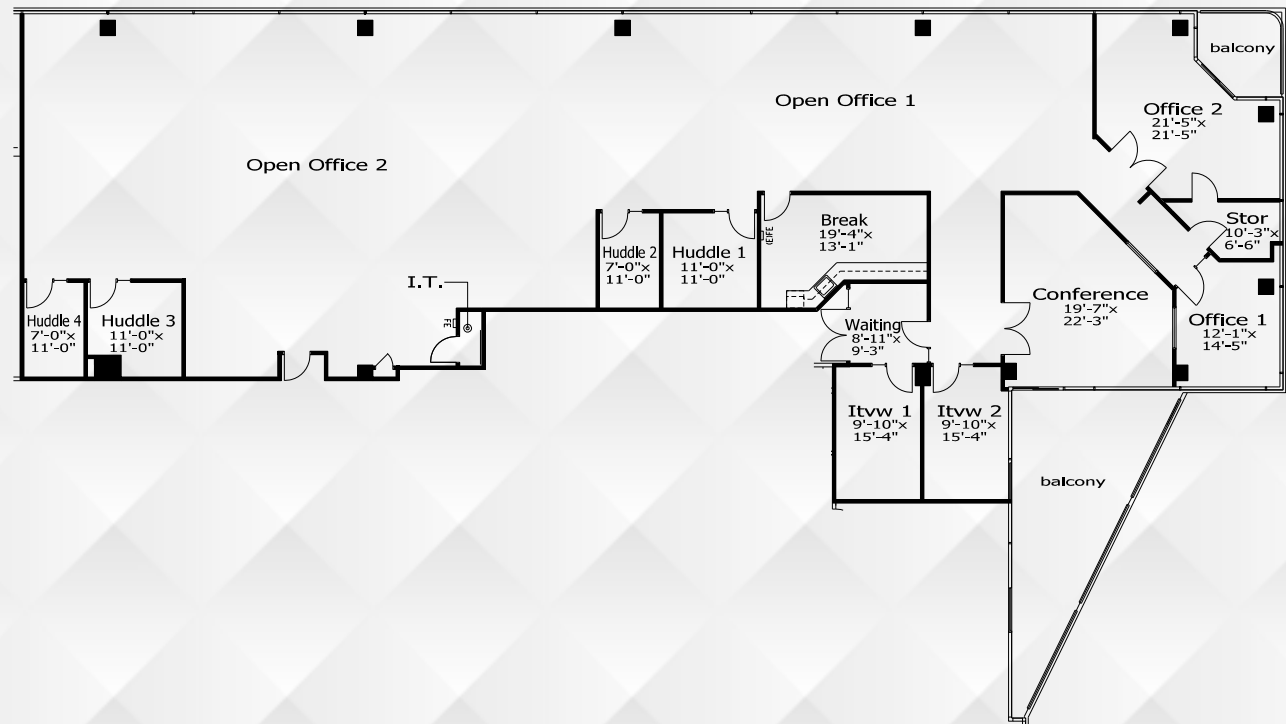
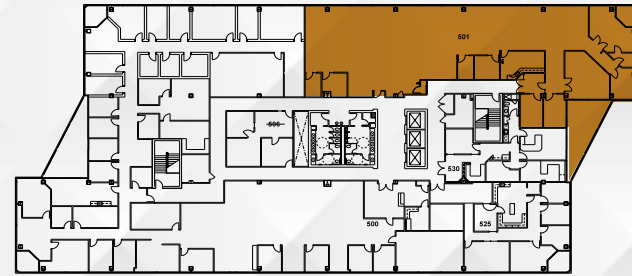


FIFTH FLOOR | 4,962 RSF | SUITE 500

POINT WEST COMMERCE CENTRE

1545 RIVER PARK DRIVE
SACRAMENTO, CA

FLOOR PLANS



FIFTH FLOOR | 7,474 RSF | SUITE 501

POINT WEST COMMERCE CENTRE

1545 RIVER PARK DRIVE, SACRAMENTO, CA



DISCLAIMER: The distributor of this communication is performing acts for which a real estate license is required. The information contained herein has been obtained from sources deemed reliable but has not been verified and no guarantee, warranty or representation, either express or implied, is made with respect to such information. Terms of sale or lease and availability are subject to change or withdrawal without notice.

NEWMARK



Exclusively Marketed By:

Jack Blackmon
916.494.2349
jack.blackmon@nrmk.com
CA RE License #01999561

Jodie Robinson
916.569.2318
jodie.robinson@nrmk.com
CA RE License #022143577

Chris Lemmon
916.367.6349
chris.lemmon@nrmk.com
CA RE License #01506816