

# Airport Atrium

2780 Skypark Drive Torrance, CA

Medical Suites For Lease



**MEDICAL ASSET  
MANAGEMENT**  
MEDICAL PROPERTY SPECIALISTS



ERIK VAN'T HOF  
Medical Asset Management  
(310)517-4877  
Erikv@medicalasset.com  
DRE #: 01055014

MITCH YANKOWITZ  
Medical Asset Management  
(310)517-4861  
Mitchy@medicalasset.com  
DRE #: 01360137

# Property Highlights

**Less than 1 mile from Torrance Memorial Hospital**

**Magnificent garden style atrium lobby with palm trees and a 3-story water feature**

**Ample surface lot offering generous free parking at a 4:1,000 ratio-ideal for medical practitioners and their patients**

**Private balconies & expansive views of Palos Verdes, Rolling Hills and Zamperini Field runway**

**Professionally managed with on-site day porter**

**The city of Torrance has no business gross receipt tax**



# Gallery

Front Entrance



Atrium Lobby



Parking Lot Entrance



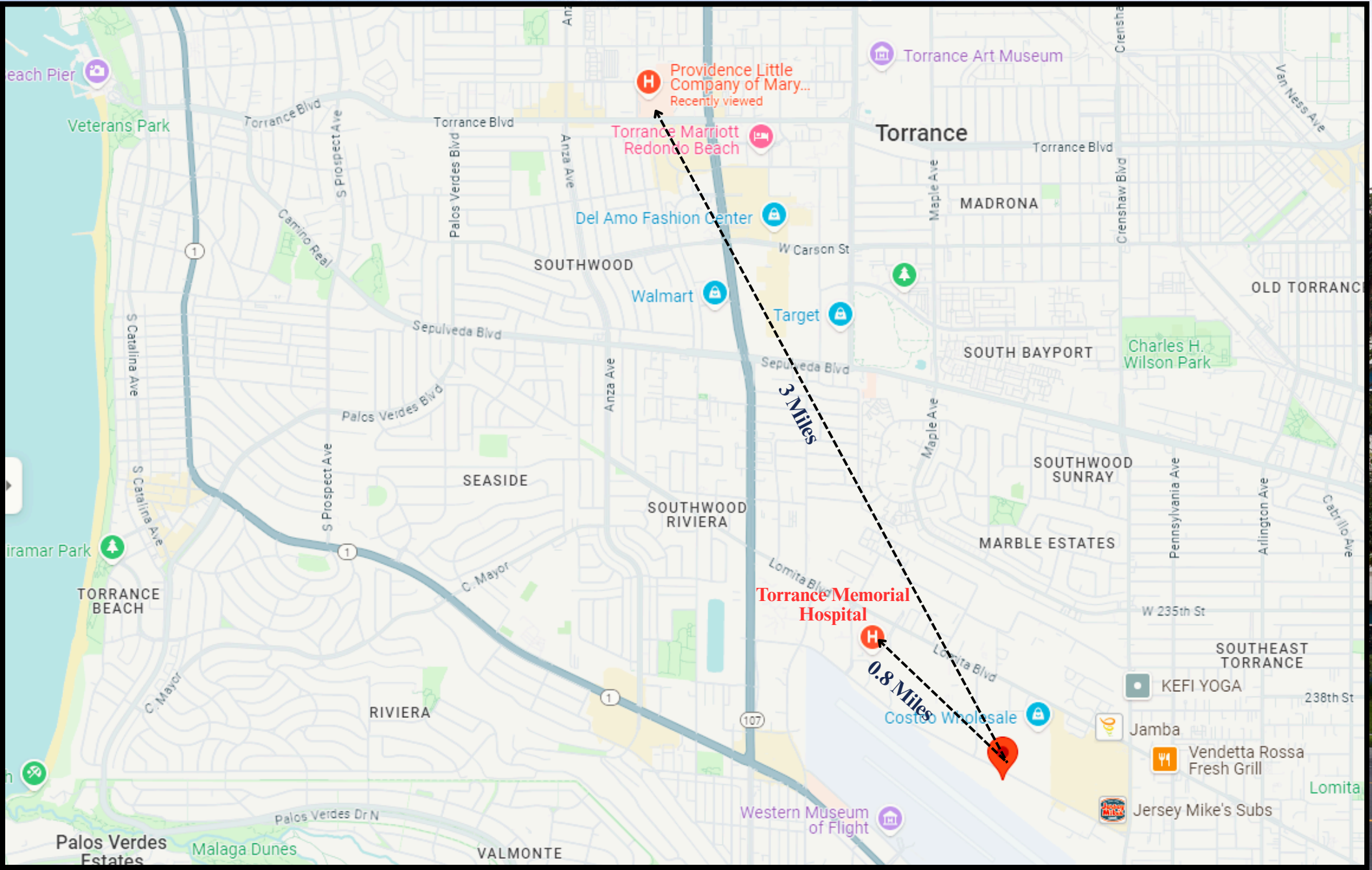
Atrium Entrance



# Location Highlights

**Less than 1 mile from Torrance Memorial Hospital**

**3 miles from Providence Little Company of Mary Medical Center**

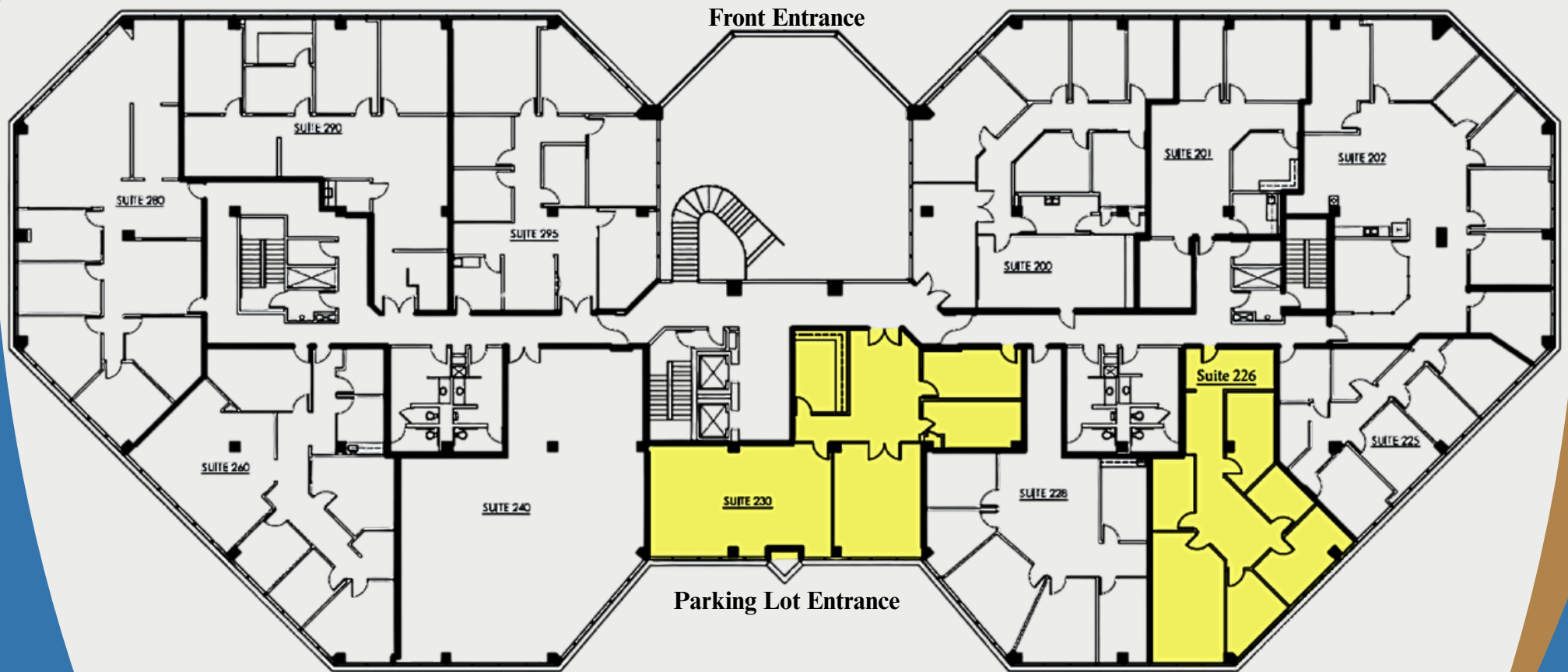


# 2<sup>nd</sup> Floor Plan

## AVAILABILITY:

## MEDICAL RENTAL RATE:

SUITE 226	1,839 RSF	\$4.25 FSG Net Janitorial
SUITE 230	2,490 RSF	\$4.25 FSG Net Janitorial

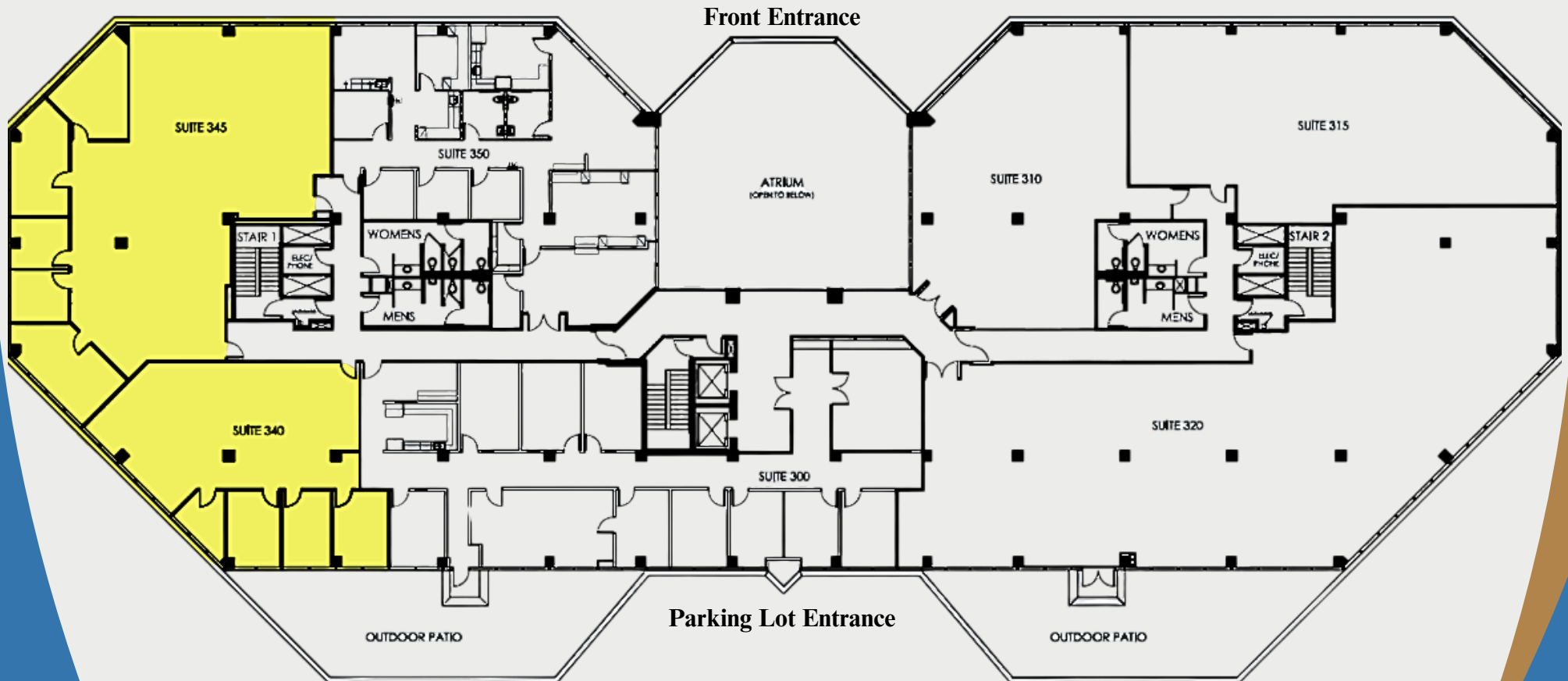


# 3<sup>rd</sup> Floor Plan

## AVAILABILITY:

## MEDICAL RENTAL RATE:

*SUITE 340	2,022 RSF	\$4.25 FSG Net Janitorial
*SUITE 345	3,952 RSF	\$4.25 FSG Net Janitorial
*Contiguous	6,092 RSF	



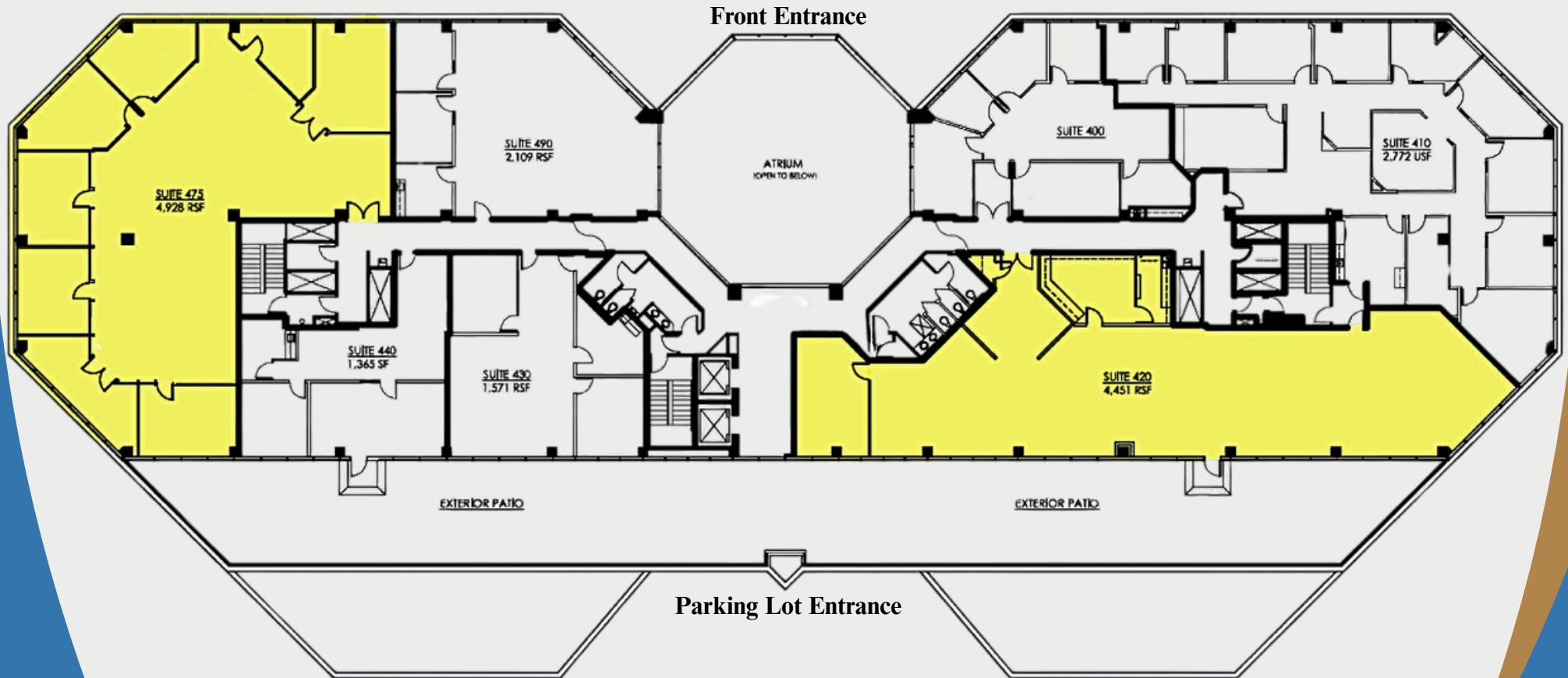
# 4<sup>th</sup> Floor Plan

## AVAILABILITY:

## MEDICAL RENTAL RATE:

*SUITE 420	4,451 RSF	\$4.40 FSG Net Janitorial
SUITE 475	4,928 RSF	\$4.25 FSG Net Janitorial

\*Large Patio with Airport Views



# Airport Atrium

2780 Skypark Drive Torrance, CA

**Medical Suites For Lease**



**MEDICAL ASSET  
MANAGEMENT**  
MEDICAL PROPERTY SPECIALISTS



For more information, please contact:

**ERIK VAN'T HOF**  
Medical Asset Management  
(310)517-4877  
Erikv@medicalasset.com  
DRE #: 01055014

**MITCH YANKOWITZ**  
Medical Asset Management  
(310)517-4861  
Mitchy@medicalasset.com  
DRE #: 01360137

\*The information contained herein is deemed reliable, but cannot be guaranteed by Medical Asset Management and is subject to change.