

Land | For Sale

CBRE

±20 Acres of Prime Hunting Land

Jefferson County, AR

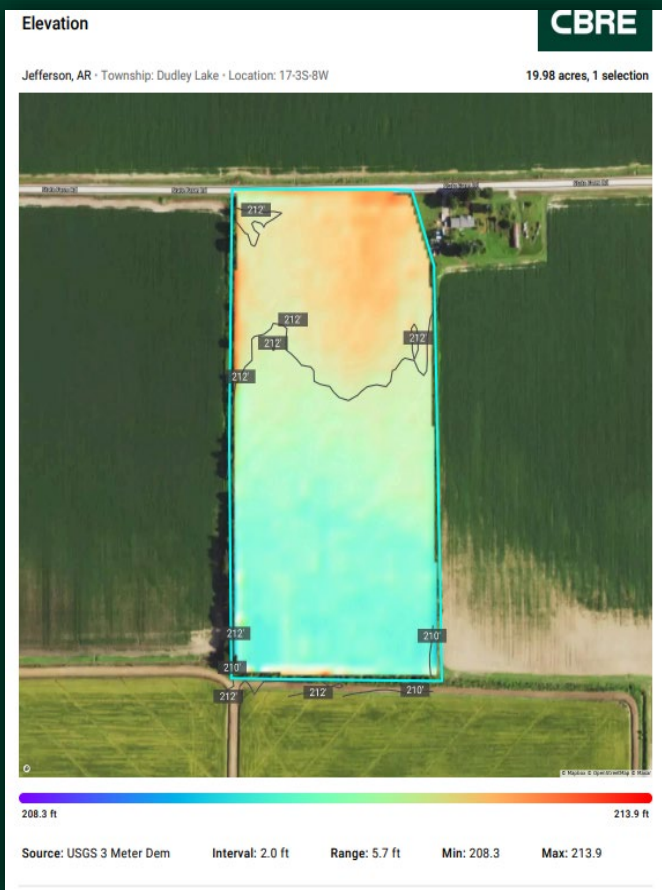
3306 State Farm Road
Tucker, AR 72168
www.cbre.com/littlerock

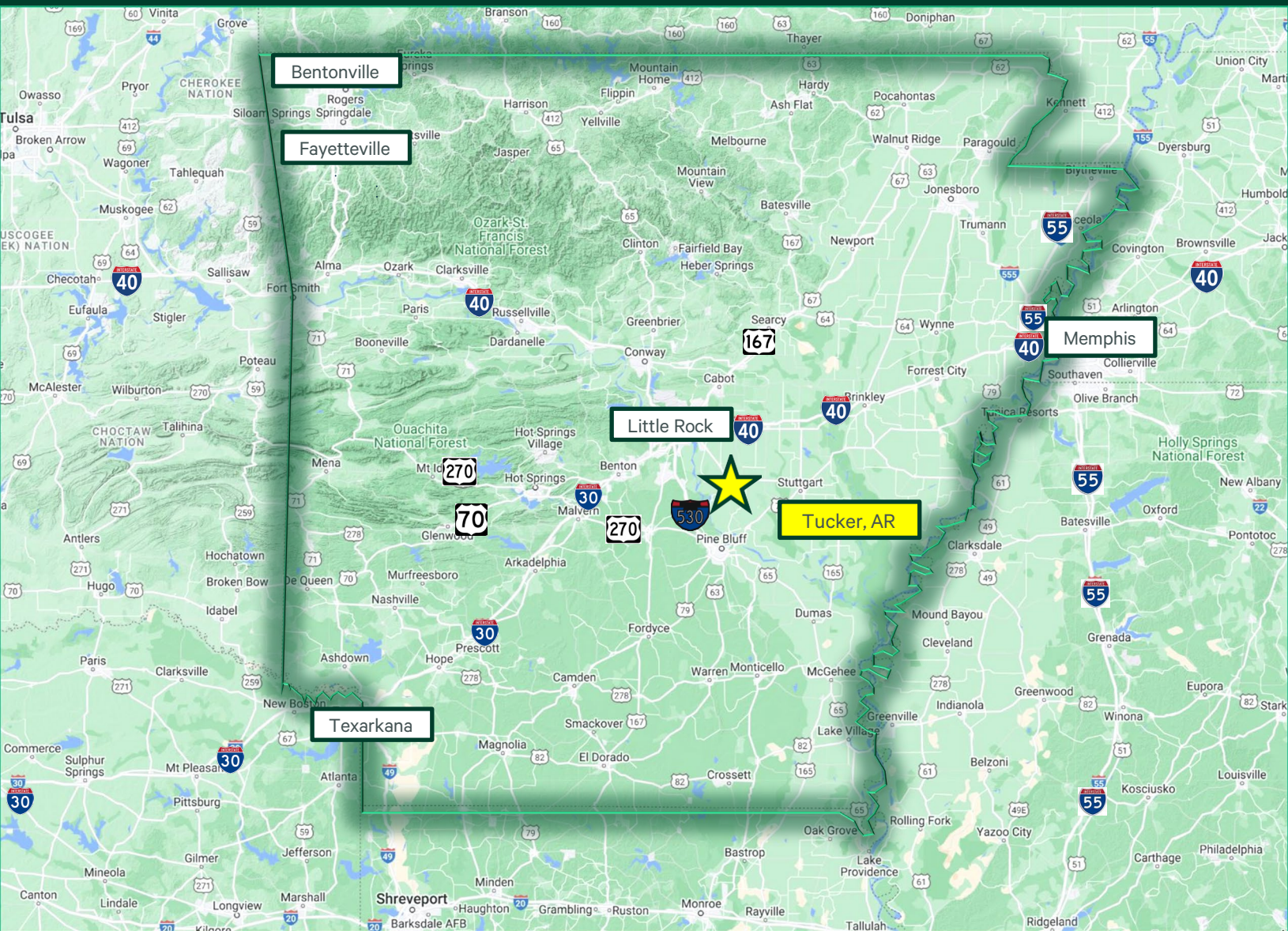


Property Features

- **Prime Location:** Just 3 miles east of Tucker, Arkansas, on State Farm Road.
- **Diverse Hunting Opportunities:** Ideal for deer, duck, and small game hunting.
- **Expansive Land:** Total of 20 acres, featuring 7.5 acres of timberland and 11.5 acres designated for moist soil.
- **Excellent Drainage:** Well-drained property with levees on three sides.
- **Convenient Accessibility:** Handy trail for easy navigation throughout the woods.
- **Outdoor Adventure:** Perfect for nature enthusiasts seeking tranquility and adventure.
- **Proximity to Little Rock:** Located 47.3 miles southeast of the State Capitol in Little Rock, AR.
- **Scenic Views:** Enjoy the natural beauty of Arkansas landscapes.
- **Recreational Activities:** Opportunities for hiking, wildlife observation, and more.
- **Unique Opportunity:** A rare find for outdoor lovers and land investors alike







Contact Us

Hudson Brown
Associate
P +1 501 370 2963
hudson.brown@cbre.com

William Callahan
Senior Vice President / Principal Broker
P +1 501 370 3952
william.callahan@cbre.com

Alex Rodgers
Associate
P +1 501 370 2955
alex.rodgers@cbre.com

© 2024 CBRE, Inc. All rights reserved. This information has been obtained from sources believed reliable but has not been verified for accuracy or completeness. CBRE, Inc. makes no guarantee, representation or warranty and accepts no responsibility or liability as to the accuracy, completeness, or reliability of the information contained herein. You should conduct a careful, independent investigation of the property and verify all information. Any reliance on this information is solely at your own risk. CBRE and the CBRE logo are service marks of CBRE, Inc. All other marks displayed on this document are the property of their respective owners, and the use of such marks does not imply any affiliation with or endorsement of CBRE. Photos herein are the property of their respective owners. Use of these images without the express written consent of the owner is prohibited.