



.EST. 1871.

DENVER

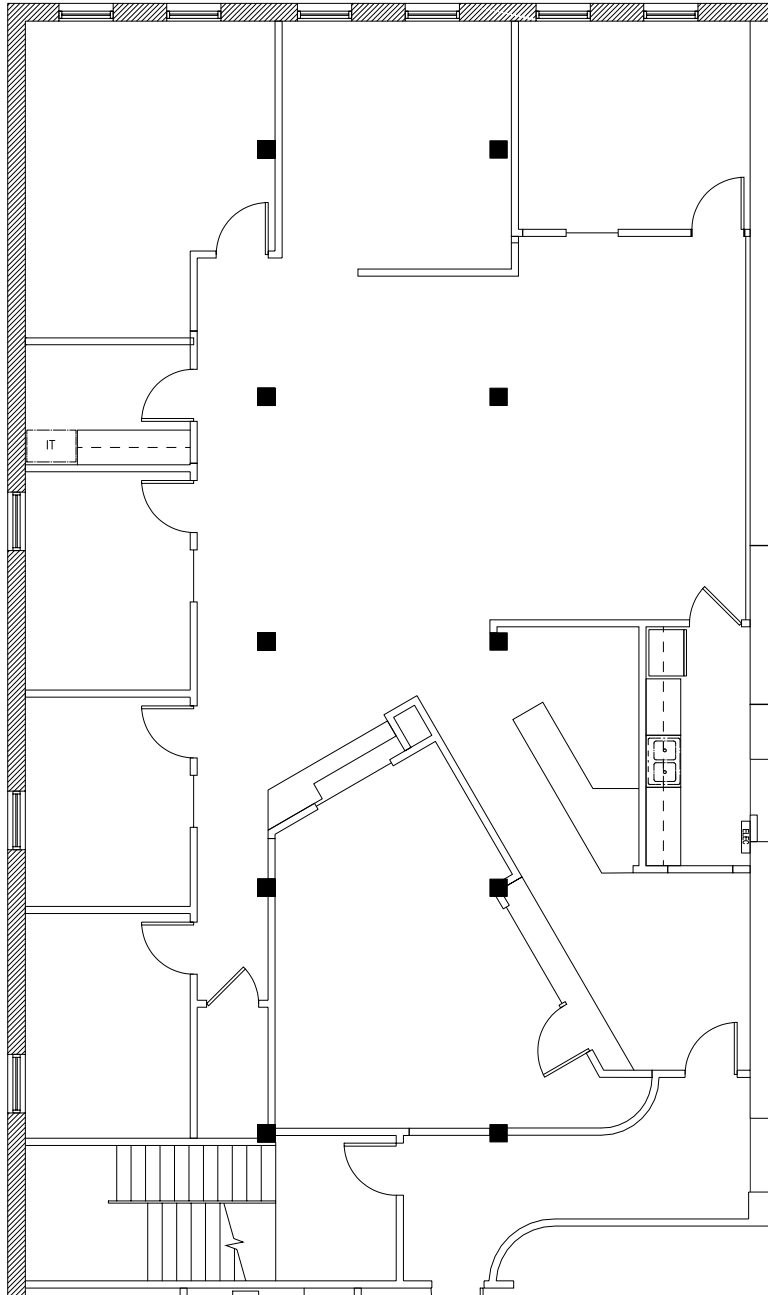
EX

WAZEE

CHANGE

COLO.

1900 WAZEE STREET, LODO



SUITE 311
3,133 RSF



FOR MORE INFORMATION, CONTACT:

JAMIE GARD
Vice Chairman
tel. 303-260-4341
jamie.gard@nmrk.com

WHITNEY HAKE
Senior Managing Director
tel. 303-260-4202
whitney.hake@nmrk.com

GRACE LESSARD
Associate Director
tel. 303-260-4210
grace.lessard@nmrk.com

NEWMARK

