

# AVAILABLE FOR LEASE

1379 MCDOW DRIVE, ROCK HILL, SC 29732



## TOTAL SQUARE FEET: ≈9,207 RSF UNIT 9 & OFFICE 1

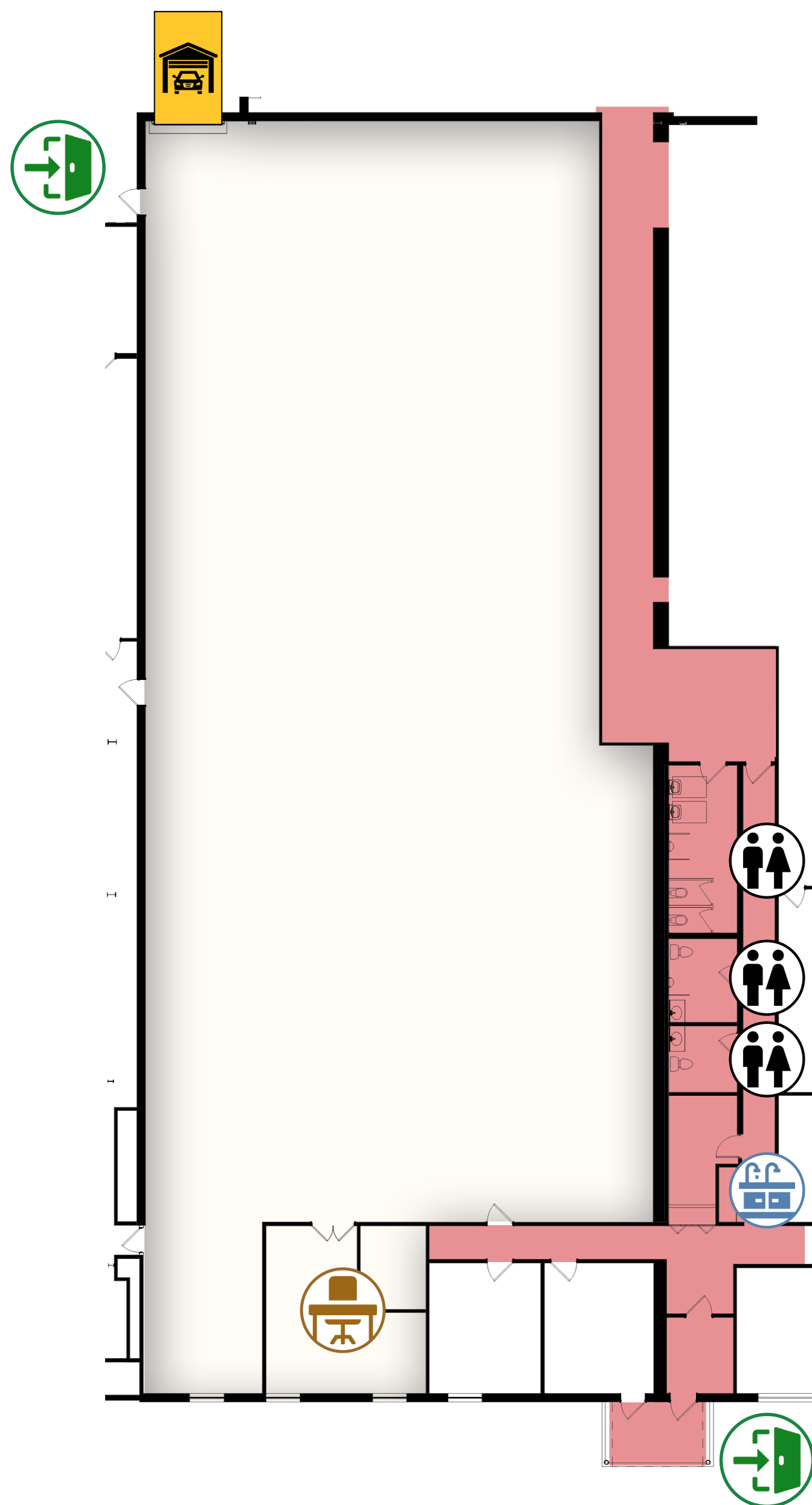
- 1 Private Drive In
- 1 Private Office Room
- Private Entrance Option

### AMENITIES:

- 3 Common Bathrooms
- 1 Common Kitchenette

VISIT OUR PROPERTY ON

• Exact dimensions are subject to change based on Architects safety plans



### FOR MORE INFORMATION:

**Mike O'Neill Jr. - Principal**  
moneilljr@preferred.com  
610 - 220 - 0255

**Connor W. Shields - Leasing Executive**  
cshields@preferred.com  
412 - 999 - 4311

**Brody Sullivan - Leasing Executive**  
Bsullivan@preferred.com  
609 - 602 - 1727

2755 East Oakland Park Blvd Suite 200 Fort Lauderdale, FL 33306

info@primerockencap.com

