



FOR LEASE

# ARLINGTON SQUARE

3300 WASHTENAW AVENUE  
ANN ARBOR, MI 48104



 CUSHMAN &  
WAKEFIELD



Second floor office space available



Across the street from abundant retail including Arborland Center, Whole Foods, Barnes & Noble, Qdoba & many more



Underground parking available for monthly rental



High visibility with average 52,000 daily traffic count at the corner of Washtenaw Avenue and Huron Parkway.

Building facade signage available facing both streets. Pylon signage also available



Immediate proximity to US-23



## CONTACT

### Kyle Passage

Director  
+1 248 358 6113  
kyle.passage@cushwake.com

### Tony AvenDt

Executive Director  
+1 248 358 6115  
tony.avenDt@cushwake.com

27777 Franklin Road, Suite 1050  
Southfield, Michigan 48034  
Main +1 248 358 6100  
cushmanwakefield.com

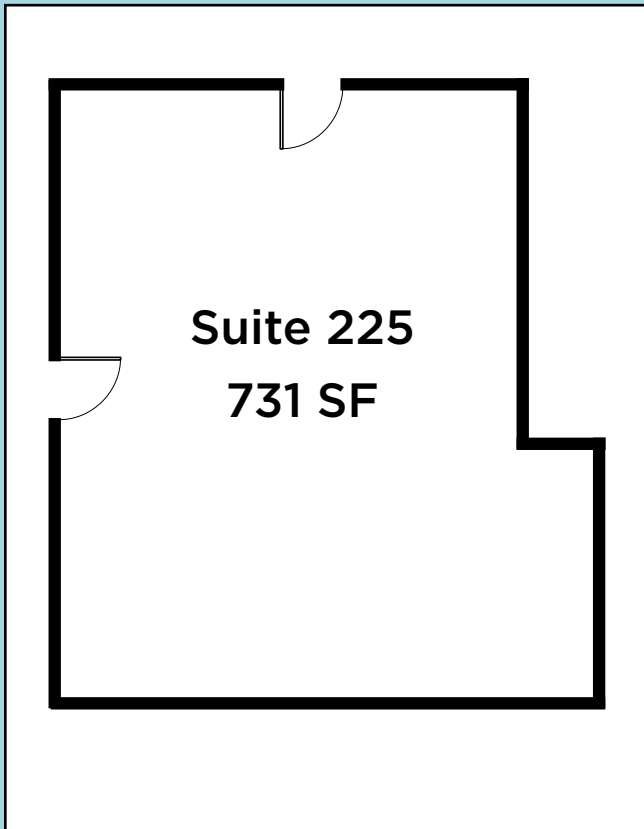
FOR LEASE

# ARLINGTON SQUARE

3300 WASHTENAW AVENUE  
ANN ARBOR, MI 48104

## SUITE 225

731 RSF office space  
\$19.50/SF + Utilities



### CONTACT

#### Kyle Passage

Director  
+1 248 358 6113  
kyle.passage@cushwake.com

#### Tony Avendt

Executive Director  
+1 248 358 6115  
tony.avendt@cushwake.com

27777 Franklin Road, Suite 1050  
Southfield, Michigan 48034  
Main +1 248 358 6100  
cushmanwakefield.com

FOR LEASE

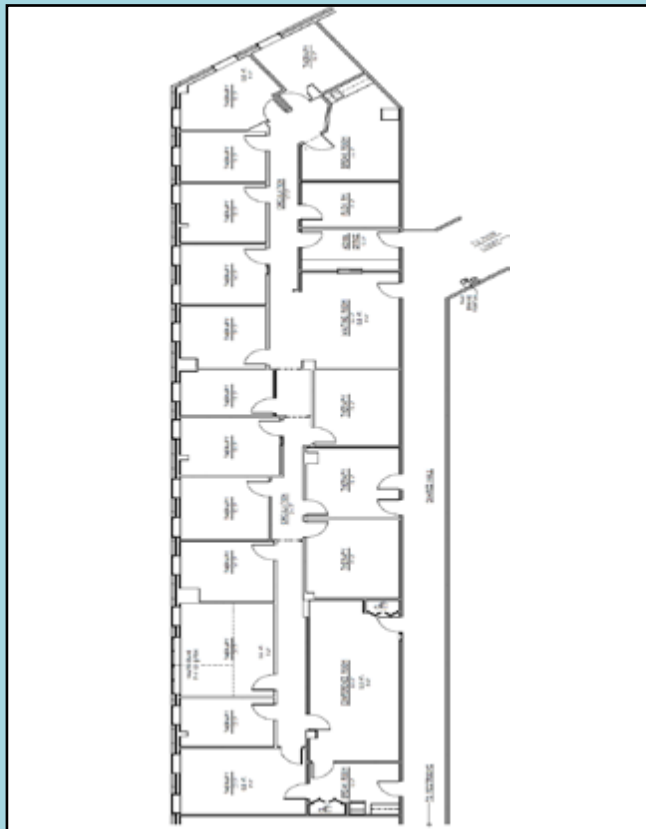
# ARLINGTON SQUARE

3300 WASHTENAW AVENUE  
ANN ARBOR, MI 48104

## SUITE 260

1,385 - 5,159 RSF office space  
\$19.50/SF + Utilities

Available July 2026



## CONTACT

### Kyle Passage

Director  
+1 248 358 6113  
kyle.passage@cushwake.com

### Tony Avendt

Executive Director  
+1 248 358 6115  
tony.avendt@cushwake.com

27777 Franklin Road, Suite 1050  
Southfield, Michigan 48034  
Main +1 248 358 6100  
cushmanwakefield.com

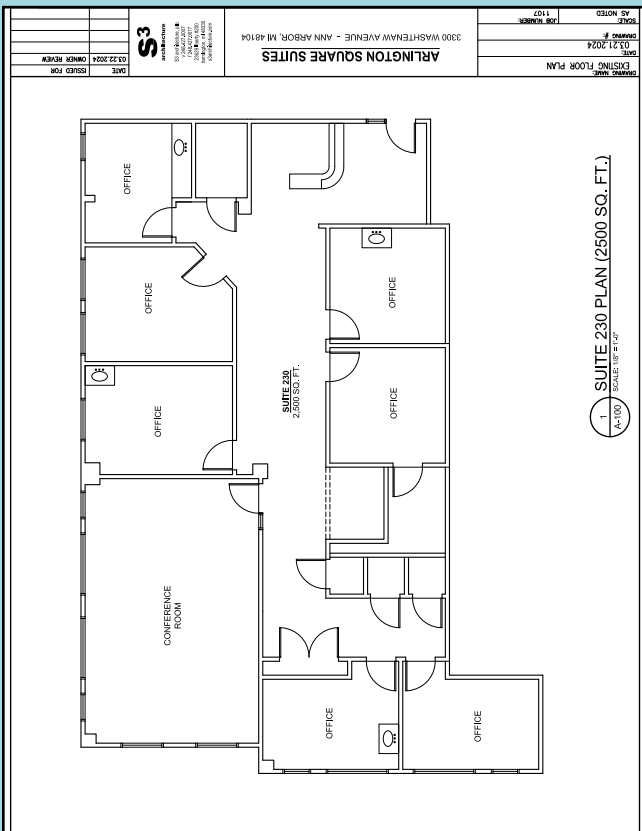
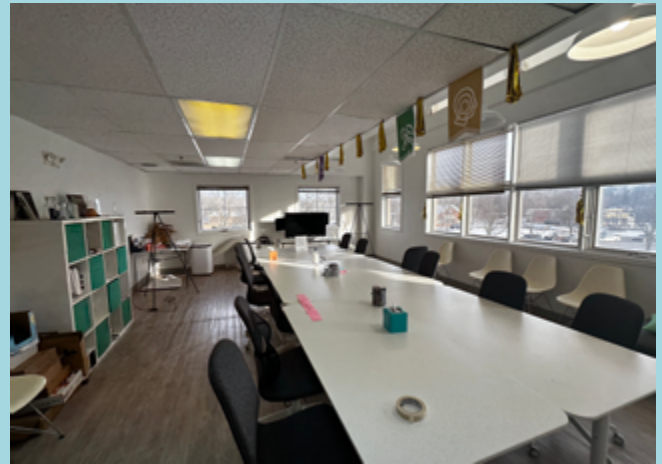
FOR LEASE

# ARLINGTON SQUARE

3300 WASHTENAW AVENUE  
ANN ARBOR, MI 48104

## SUITE 280

2,804 RSF office space  
\$19.50/SF + Utilities



### CONTACT

**Kyle Passage**

Director  
+1 248 358 6113  
kyle.passage@cushwake.com

**Tony Avendt**

Executive Director  
+1 248 358 6115  
tony.avendt@cushwake.com

27777 Franklin Road, Suite 1050  
Southfield, Michigan 48034  
Main +1 248 358 6100  
cushmanwakefield.com



# AERIAL



## CONTACT

### **Kyle Passage**

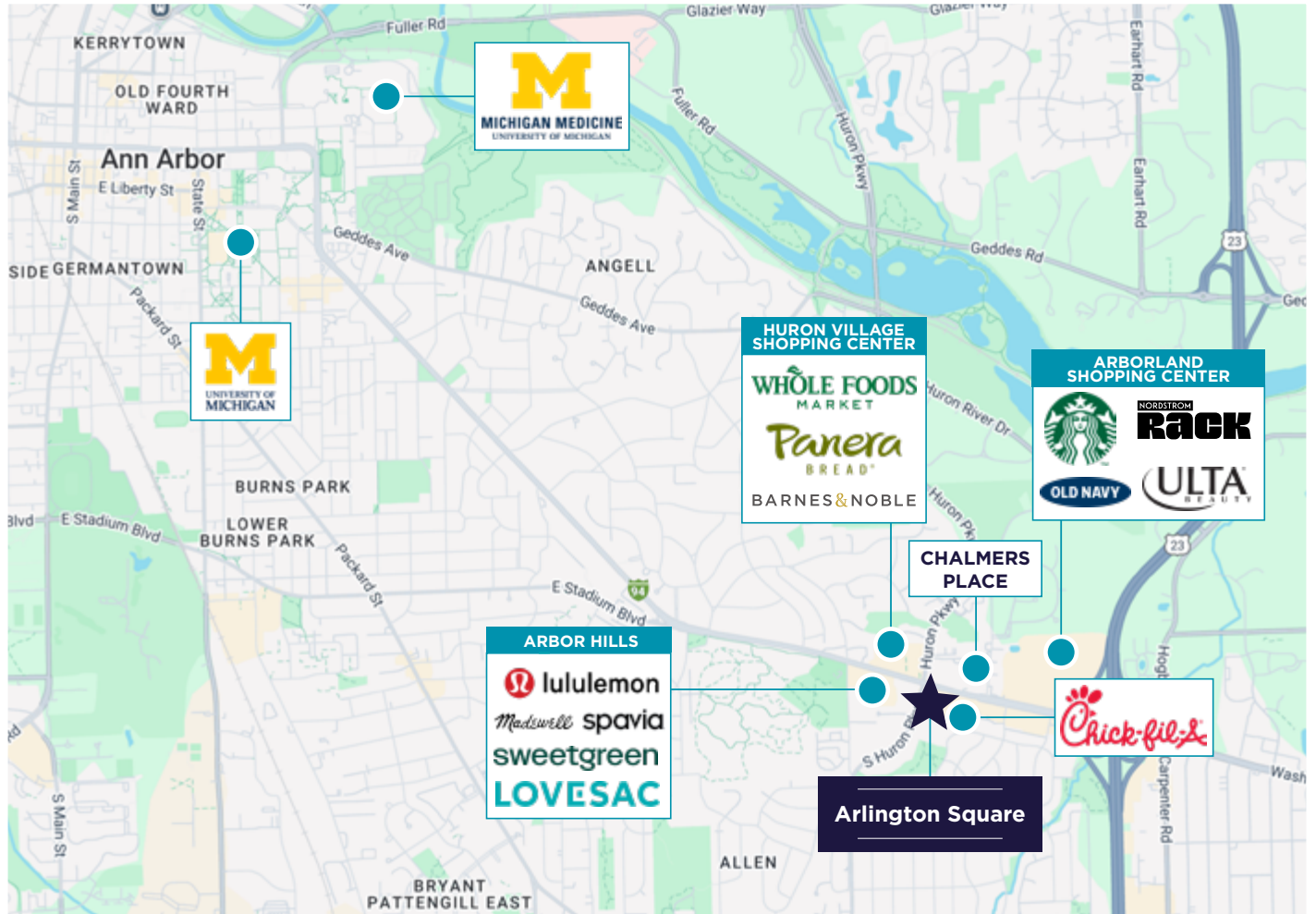
Director  
+1 248 358 6113  
kyle.passage@cushwake.com

### **Tony Avendt**

Executive Director  
+1 248 358 6115  
tony.avendt@cushwake.com

27777 Franklin Road, Suite 1050  
Southfield, Michigan 48034  
Main +1 248 358 6100  
cushmanwakefield.com

# AMENITIES MAP



Arbor Hills Shopping Mall



University of Michigan Campus



University of Michigan Hospital

## CONTACT

### Kyle Passage

Director  
+1 248 358 6113  
kyle.passage@cushwake.com

### Tony Avendt

Executive Director  
+1 248 358 6115  
tony.avendt@cushwake.com

27777 Franklin Road, Suite 1050  
Southfield, Michigan 48034  
Main +1 248 358 6100  
cushmanwakefield.com

# LOBBY INTERIOR



# PARKING GARAGE



## CONTACT

### Kyle Passage

Director  
+1 248 358 6113  
kyle.passage@cushwake.com

### Tony Avendt

Executive Director  
+1 248 358 6115  
tony.avendt@cushwake.com

27777 Franklin Road, Suite 1050  
Southfield, Michigan 48034  
Main +1 248 358 6100  
cushmanwakefield.com

# ARLINGTON SQUARE

3300 WASHTENAW AVENUE  
ANN ARBOR, MI 48104



©2025 Cushman & Wakefield. All rights reserved. The information contained in this communication is strictly confidential. This information has been obtained from sources believed to be reliable but has not been verified. NO WARRANTY OR REPRESENTATION, EXPRESS OR IMPLIED, IS MADE AS TO THE CONDITION OF THE PROPERTY (OR PROPERTIES) REFERENCED HEREIN OR AS TO THE ACCURACY OR COMPLETENESS OF THE INFORMATION CONTAINED HEREIN, AND SAME IS SUBMITTED SUBJECT TO ERRORS, OMISSIONS, CHANGE OF PRICE, RENTAL OR OTHER CONDITIONS, WITHDRAWAL WITHOUT NOTICE, AND TO ANY SPECIAL LISTING CONDITIONS IMPOSED BY THE PROPERTY OWNER(S). ANY PROJECTIONS, OPINIONS OR ESTIMATES ARE SUBJECT TO UNCERTAINTY AND DO NOT SIGNIFY CURRENT OR FUTURE PROPERTY PERFORMANCE.