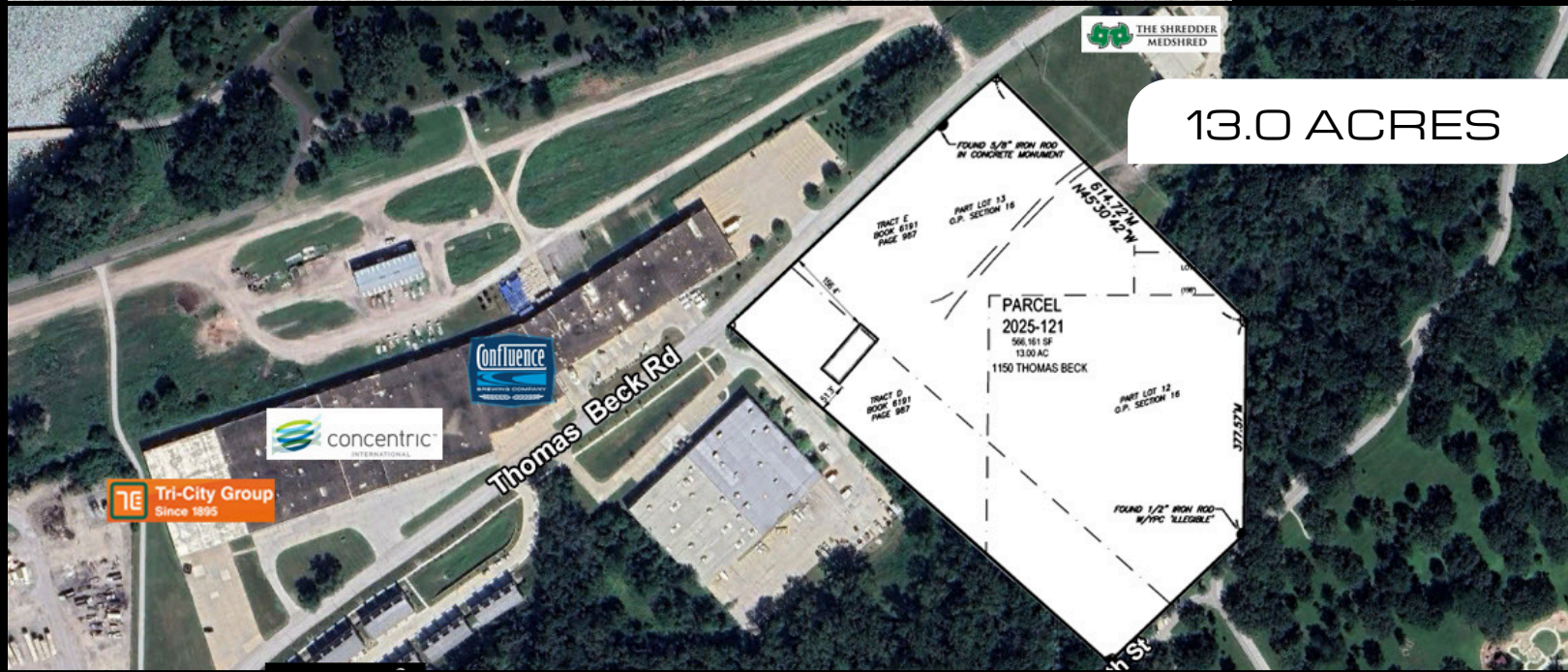


1150-1200 THOMAS BECK ROAD
DES MOINES, IOWA 50315

FOR
SALE



PROPERTY DETAILS

- 13.0 Acres For Sale
- Sale Price: \$3,900,000
- Zoned Neighborhood Mix District
- Located Just East of Fleur Drive on Thomas Beck Road West of The Shredder + MedShred
- Close Proximity to Gray's Lake, Downtown Des Moines, Principal Park, and Minutes to Des Moines International Airport
- City of Des Moines South of Gray's Lake Master Plan - Approved March 21, 2022 - Outlines Future Mixed Use Development For 140 Acres South of Gray's Lake - Uses Include Apartments, Townhomes, Restaurants, Shops, Office Space and More.

BUY

SELL

LEASE

DEVELOP

MANAGE

CONSULT

CONTACT:



CDM[®]
REAL ESTATE
SERVICES

REID TAMISIEA
Agent

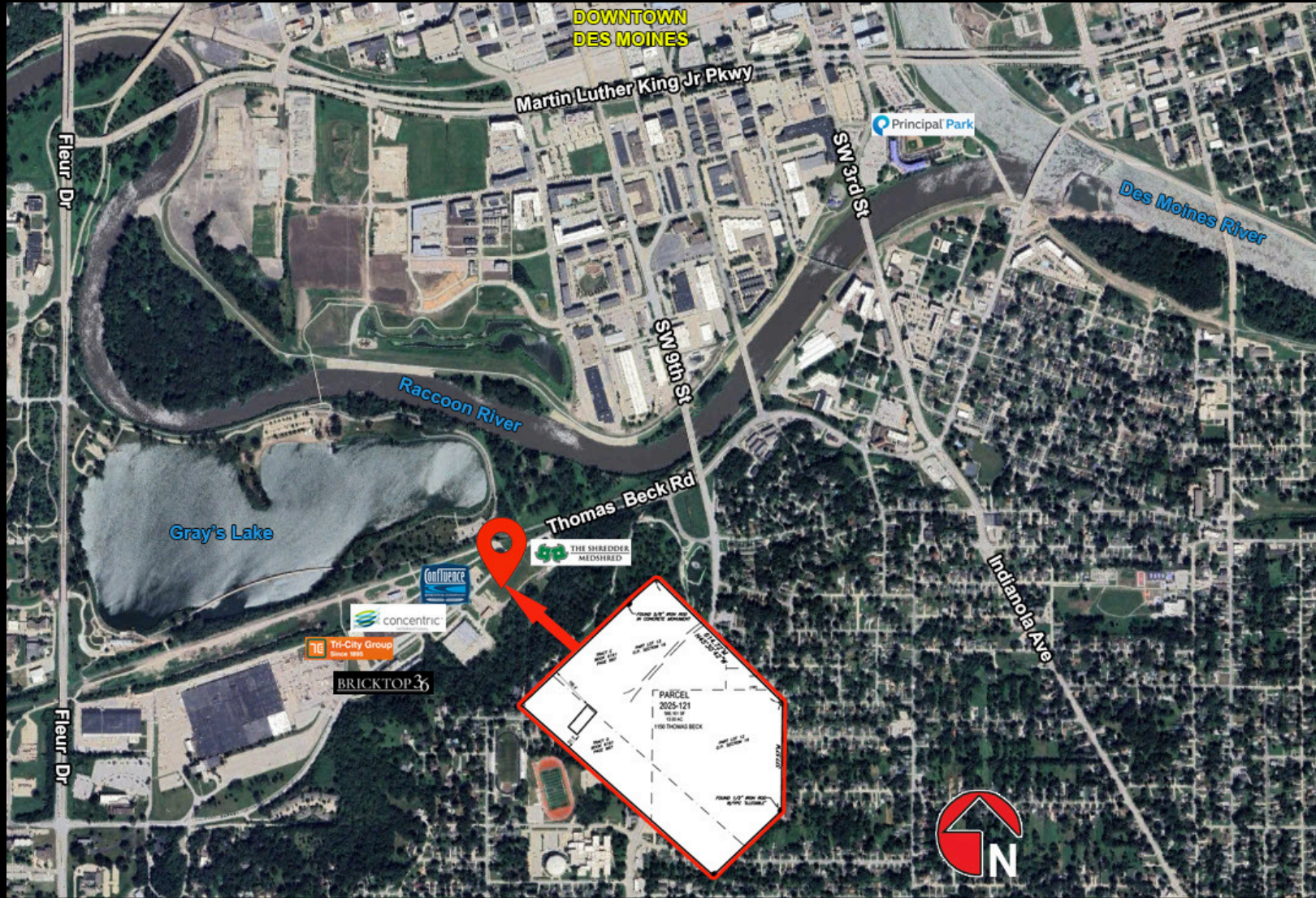
📞 515.721.9115

✉ reid@cdmres.com

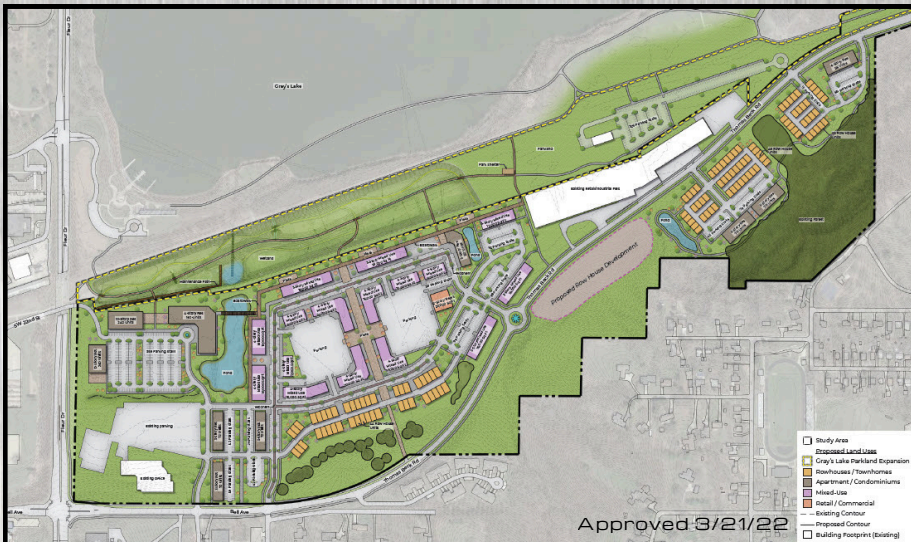
Licensed in the State of Iowa

1150-1200 THOMAS BECK ROAD
 DES MOINES, IOWA 50315

FOR
 SALE



SOUTH GRAY'S LAKE MASTER PLAN (FINAL)



CONTACT:



CDM
 REAL ESTATE
 SERVICES

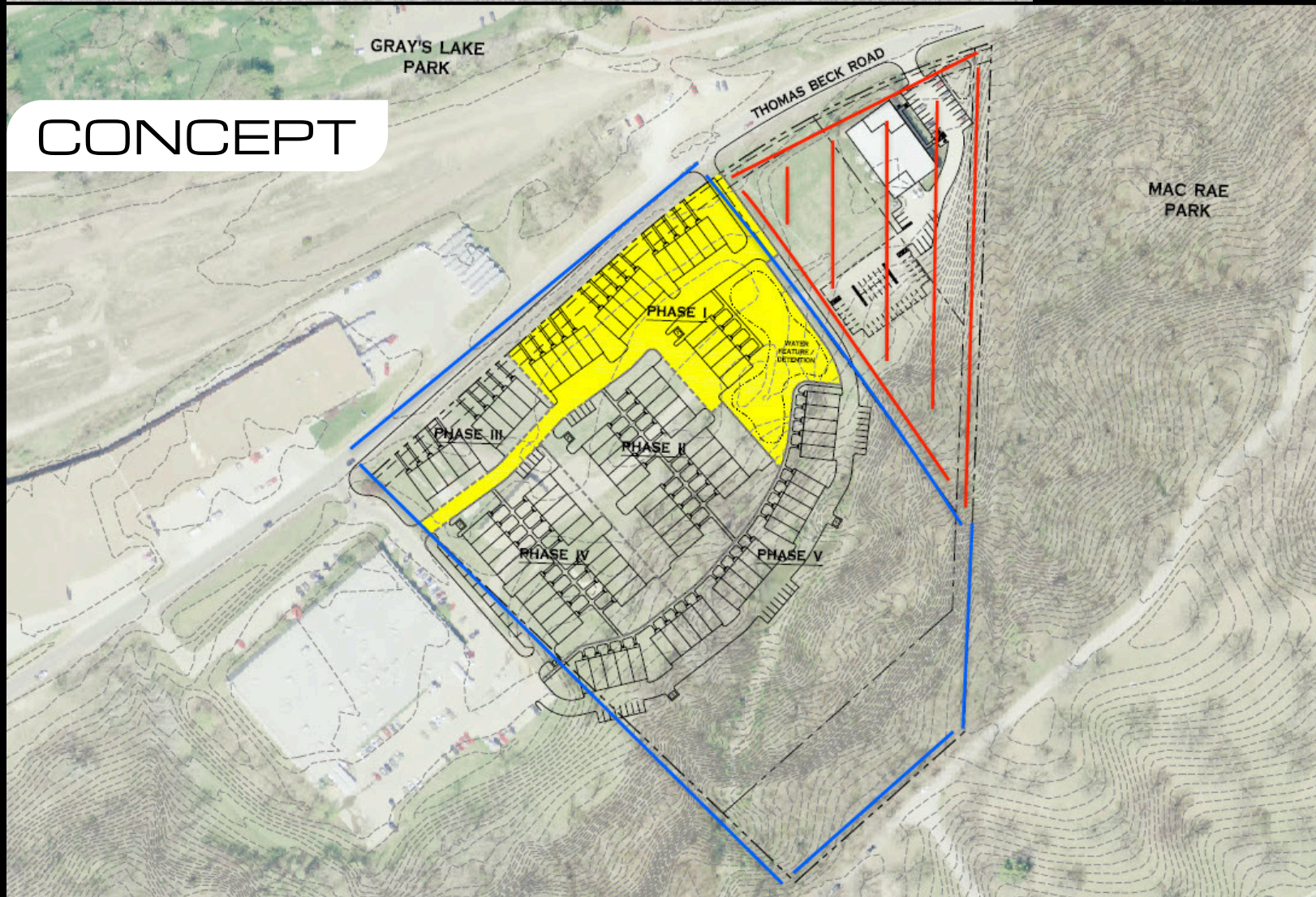
Licensed in the State of Iowa

2026 Platinum Real Estate, LLC dba CDM Real Estate Services. We obtained the information herein from the Property Owner or other sources we believe to be reliable, however it is not verified or warranted to its accuracy and may change or be updated without notice. Property Owner, Seller, Landlord makes no representation as to the environmental condition of the property and recommends purchaser's or tenant's independent investigation. Images herein are property of the Property Owner or Listing Agent. Use of these images are restricted without the proper approval from the Property Owner and/or Listing Agent.

1150-1200 THOMAS BECK ROAD
DES MOINES, IOWA 50315

FOR
SALE

CONCEPT



CONTACT:



CDM[®]
REAL ESTATE
SERVICES

Licensed in the State of Iowa