

Frankfort Retail Center

934 Louisville Road
Frankfort, Kentucky 40601

Property Highlights

- Ample visibility in a high traffic area near the intersection of US 127 & US 60 in Frankfort's major retail corridor
- Less than a mile to the Kentucky State Capital and downtown Frankfort and less than 2 miles to I-64
- Frankfort is 29 miles west of Lexington, 54 miles east of Louisville and 107 miles southwest of Cincinnati
- The city of Frankfort has grown steadily, relying on state government, manufacturing and spirits distilling to provide a strong employment base
- Juniper Hills Golf Course and Aquatic Center backs up to the property, presenting beautiful rolling hills and manicured fairways
- Traffic count of +/-12,230 VPD ('18) in front of the site

Space

Suite C

Rate

\$18.50 SF/yr

Size

1,200 SF

For More Information

Jamie Adams, SIOR, CCIM

Vice President

O: 859 422 4413

jadams@naiisaac.com | KY #216464

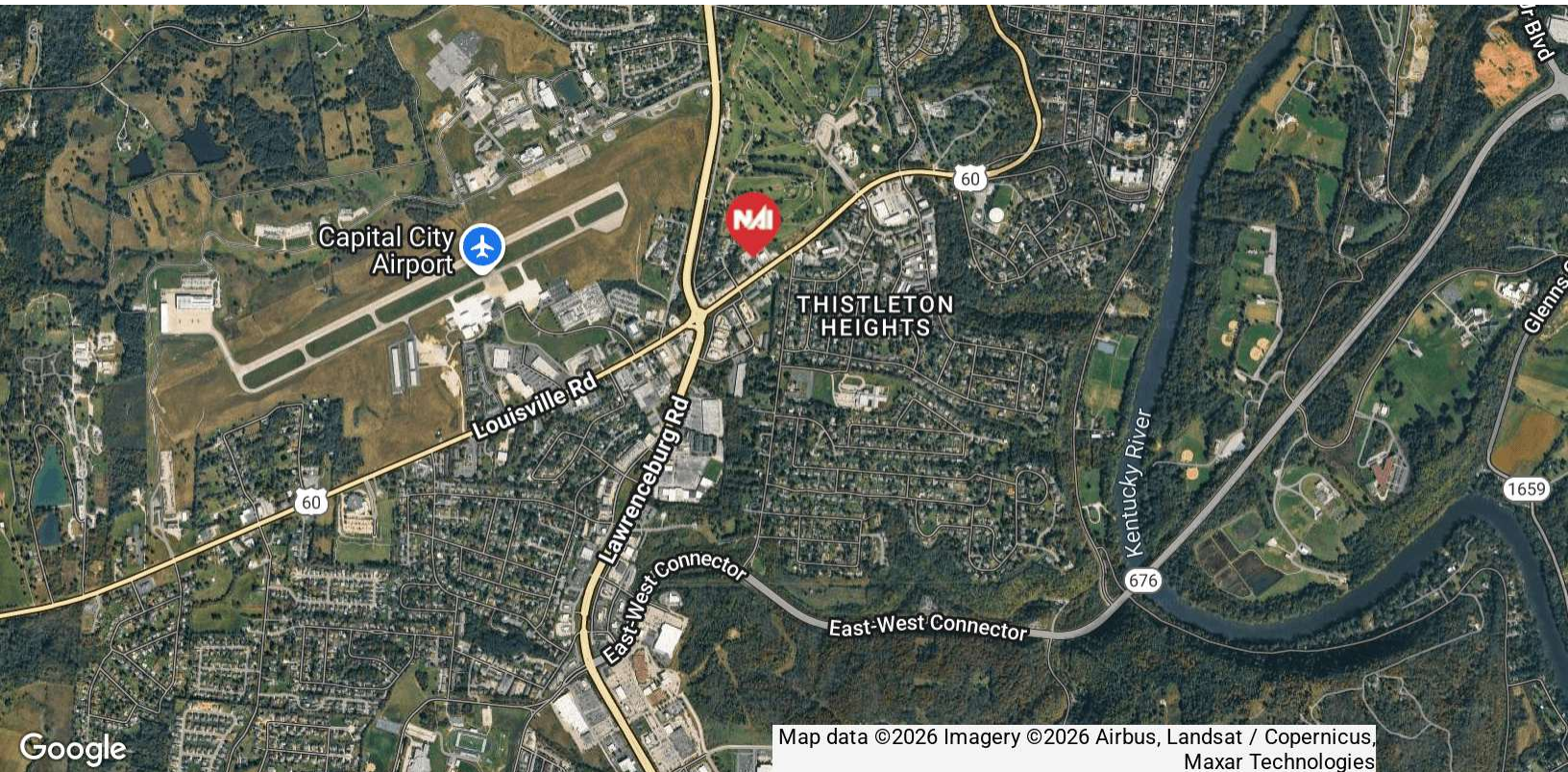
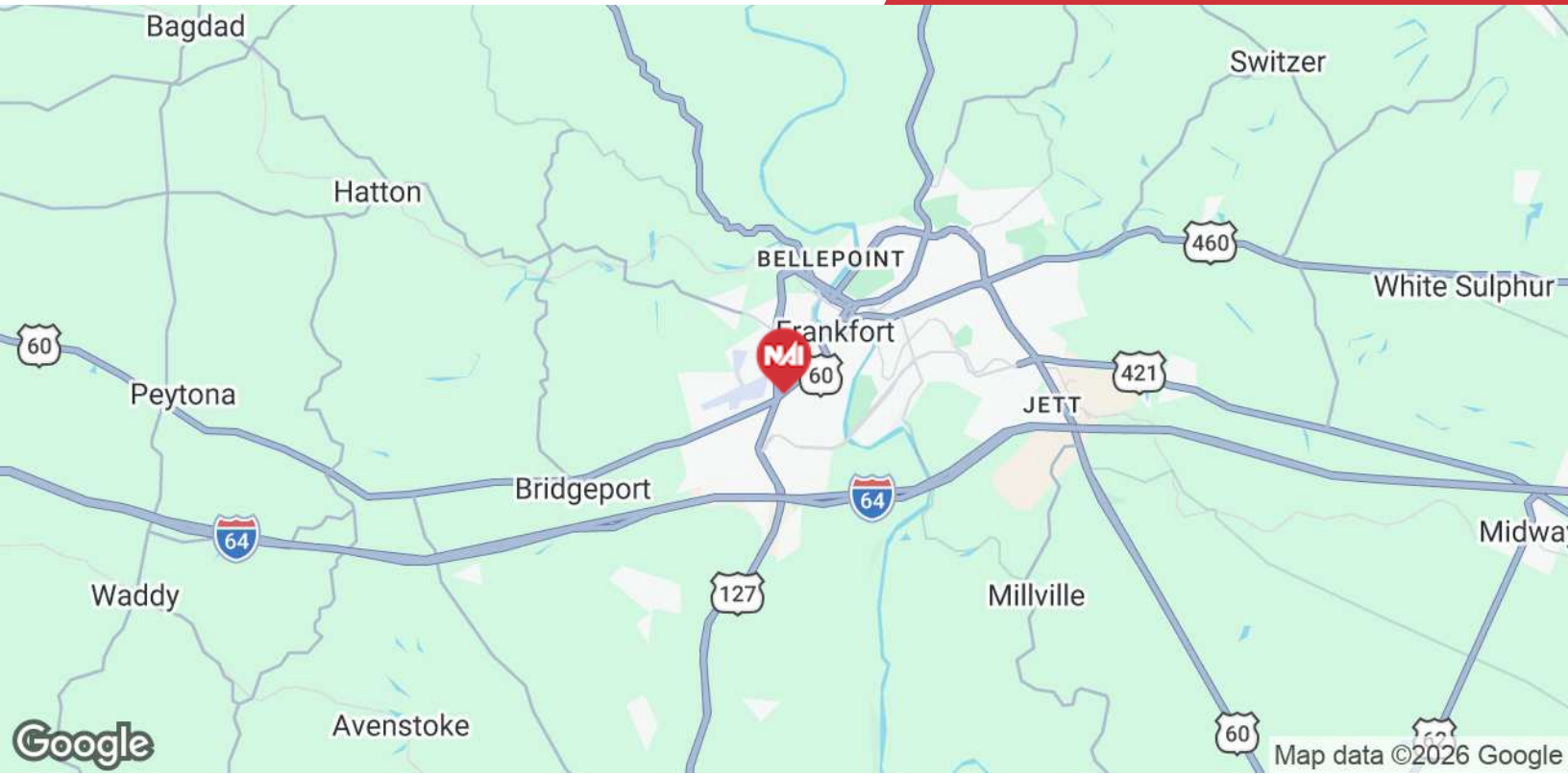
Max Darby

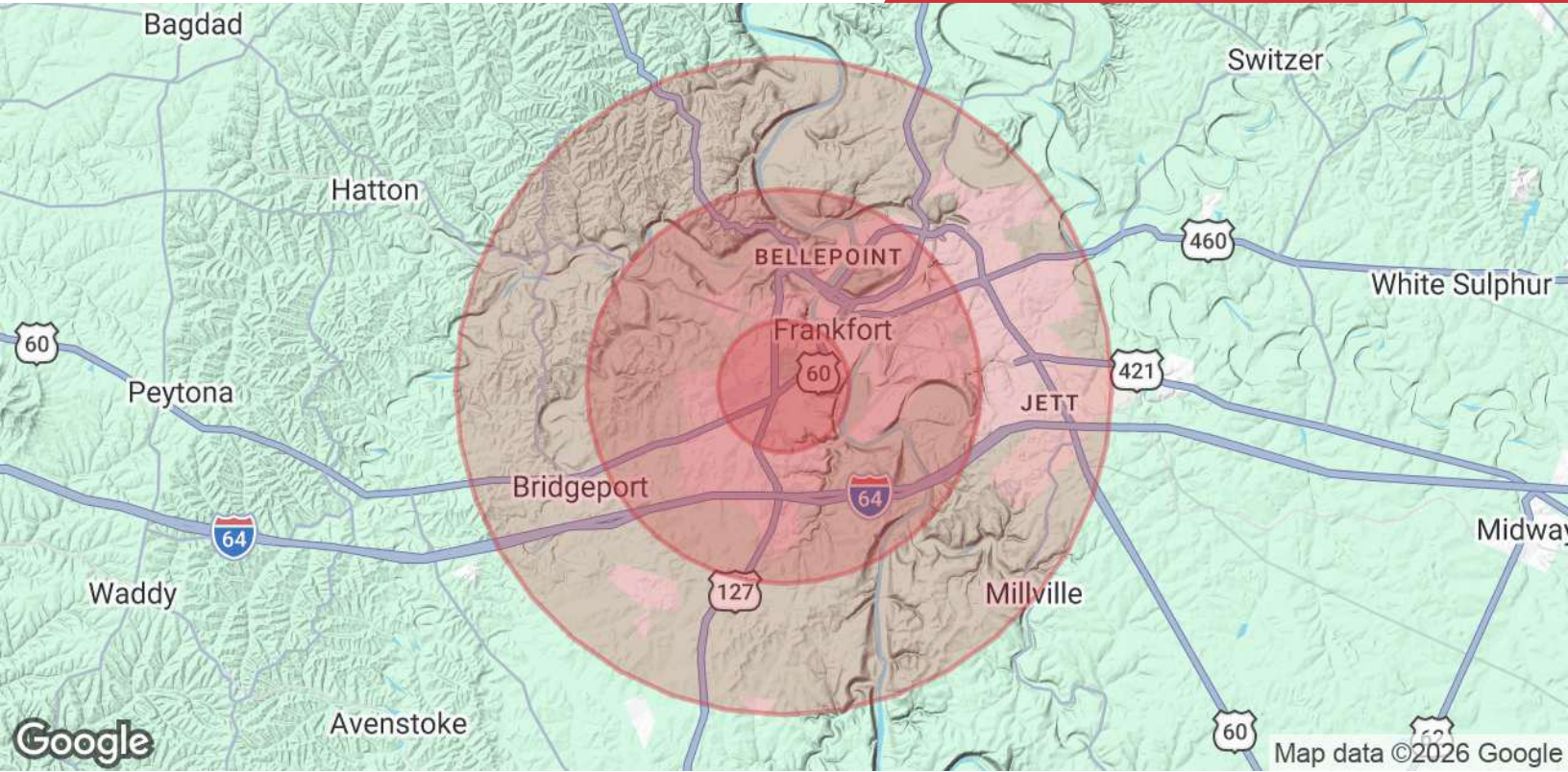
Associate

O: 859 224 2000

mdarby@naiisaac.com







Population

	1 Mile	3 Miles	5 Miles
Total Population	5,532	21,673	41,280
Average Age	43	41	41
Average Age (Male)	41	39	40
Average Age (Female)	44	42	43

Households & Income

	1 Mile	3 Miles	5 Miles
Total Households	2,548	9,404	17,733
# of Persons per HH	2.2	2.3	2.3
Average HH Income	\$93,825	\$81,256	\$87,668
Average House Value	\$219,597	\$199,614	\$218,071

* Demographic data derived from 2024 STDB