

OFFERED UNPRICED | INDIVIDUAL PARCELS OR BULK SALE CONSIDERED

2000 FARM TO MARKET 1788

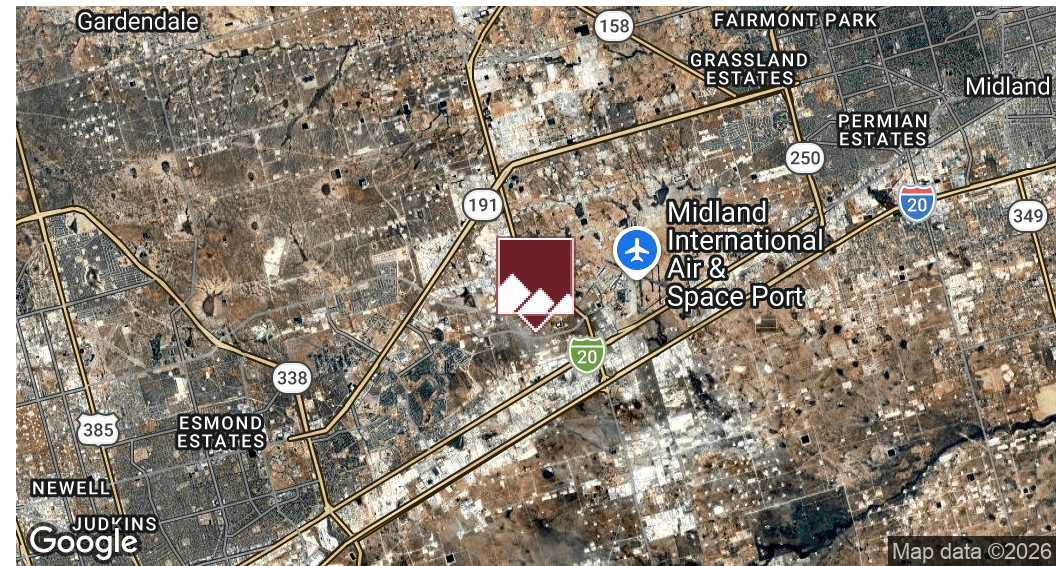
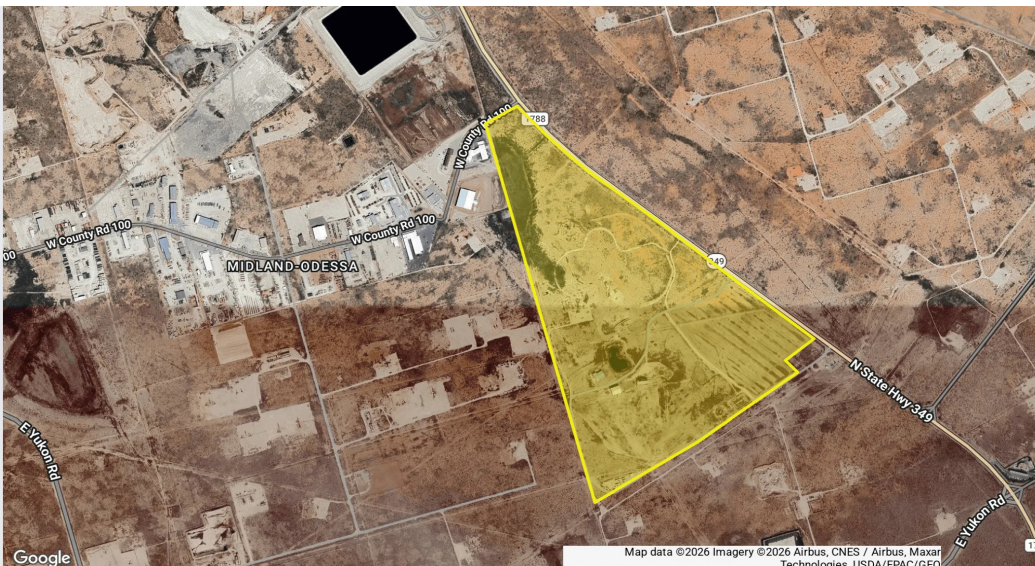
Midland, TX 79711

Mike Gresback

Agent
214.808.2893
mike@moriahrealestate.com

2000 FARM TO MARKET 1788

Midland, TX 79711



Property Description

241 acres of strategically positioned raw development land along FM 1788 in Midland County, Texas — one of the Permian Basin’s most active growth corridors. The property presents a rare large-scale opportunity suitable for industrial, energy, data center/AI infrastructure, logistics, and long-term investment uses, and is available as a whole or in phases based on buyer demand. Approximately 115 acres are located within the City of Midland city limits, with the remaining 126 acres situated in unincorporated Midland County, providing flexibility across a variety of development, entitlement, and ownership structures.

Offering Summary

Sale Price:	Offered Unpriced Individual Parcels or Bulk Sale Considered
Lot Size:	241.14 Acres

Location Description

The Subject Property is located along FM 1788 in Midland County, Texas, centrally positioned between Midland and Odessa in the heart of the Permian Basin. The property offers convenient access to Interstate 20, State Highway 191, and Midland International Air & Space Port, along with direct adjacency to the Oncor Midland Airport 138 kV substation. This rare combination of regional highway connectivity, airport adjacency, and significant electrical infrastructure positions the site as a compelling candidate for energy-intensive and infrastructure-driven development.

Property Highlights

- 241 Acres Development Land | FM 1788 Frontage | Midland County | Permian Basin Growth Corridor
- 115 Acres Within City of Midland | 126 Acres Unincorporated County | Flexible Development Potential
- Industrial | Energy | Data Center | Logistics | Long-Term Investment Opportunity
- Direct Access to I-20, SH 191 & Midland International | Adjacent to Oncor

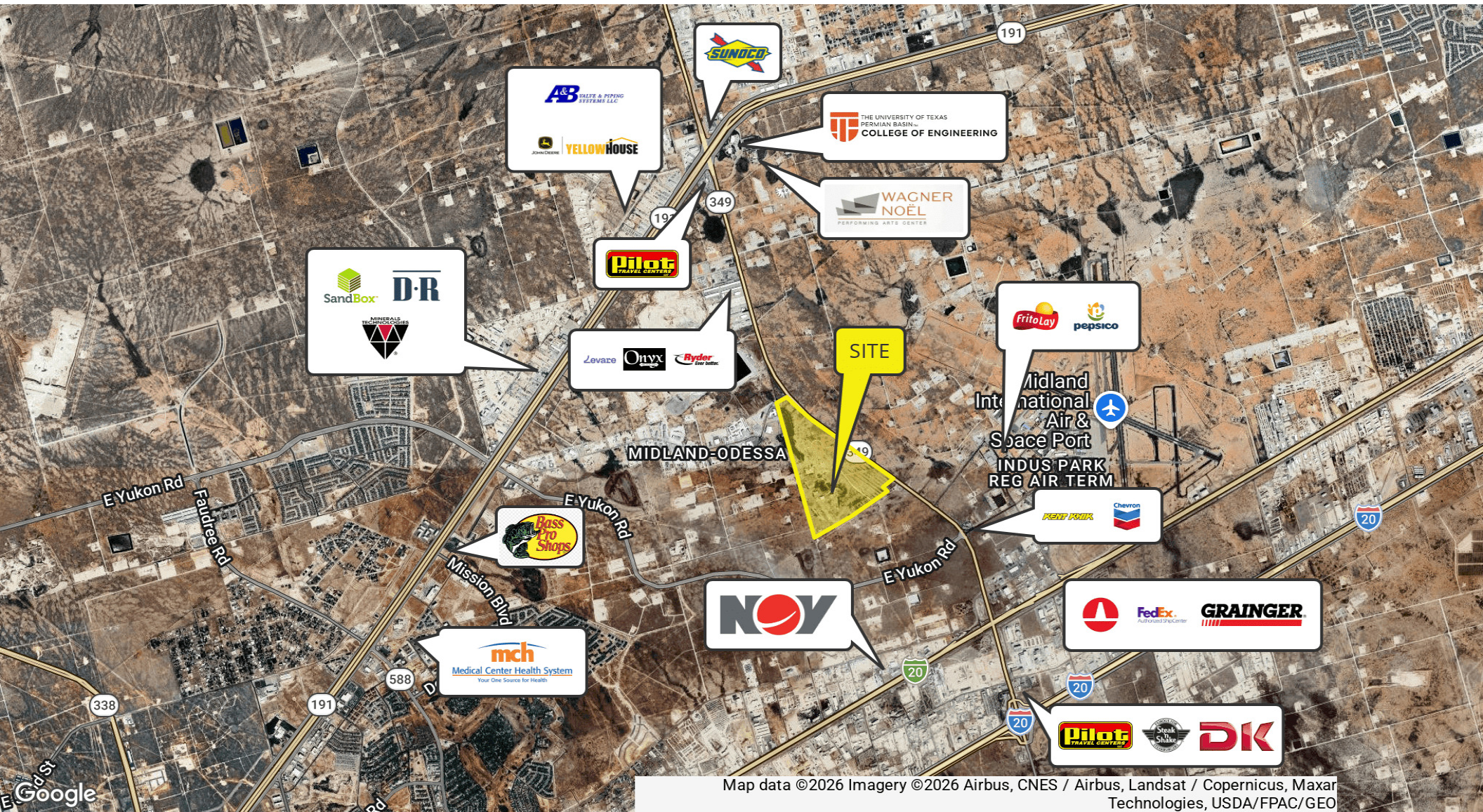
Mike Gresback

Agent
214.808.2893
mike@moriahrealstate.com

OFFERED UNPRICED | INDIVIDUAL PARCELS OR BULK SALE CONSIDERED

2000 FARM TO MARKET 1788

Midland, TX 79711



Map data ©2026 Imagery ©2026 Airbus, CNES / Airbus, Landsat / Copernicus, Maxar Technologies, USDA/FPAC/GEO

Mike Gresback

Agent
214.808.2893
mike@moriahrealstate.com

MORIAH
BROKERAGE SERVICES, LLC

PRICE: SUBJECT TO OFFER

2000 FARM TO MARKET 1788

Midland, TX 79711

Moriah Brokerage Services, LLC



JOHN ELPHICK, CCIM
BROKER

TREY DENNIS
BROKER

WES GOTCHER
PRESIDENT/MANAGING
BROKER

STEPHANIE GAUTHIER
AGENT

JACK ODURO
AGENT



MIKE GRESBACK
AGENT

TOMMY REYNOLDS
AGENT

MEGAN YANCEY
TRANSACTION COORD.

HUNTER HICKOK
AGENT

JOEY VARELA
AGENT

PRESLEY FLATT
MARKETING SPECIALIST

Significant Assignments & Transactions



INDUSTRIAL | OFFICE | RETAIL | LAND | MULTIFAMILY

MORIAH BROKERAGE SERVICES, LLC | P: 432-682-2510

Mike Gresback

Agent
214.808.2893
mike@moriahrealstate.com

