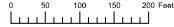


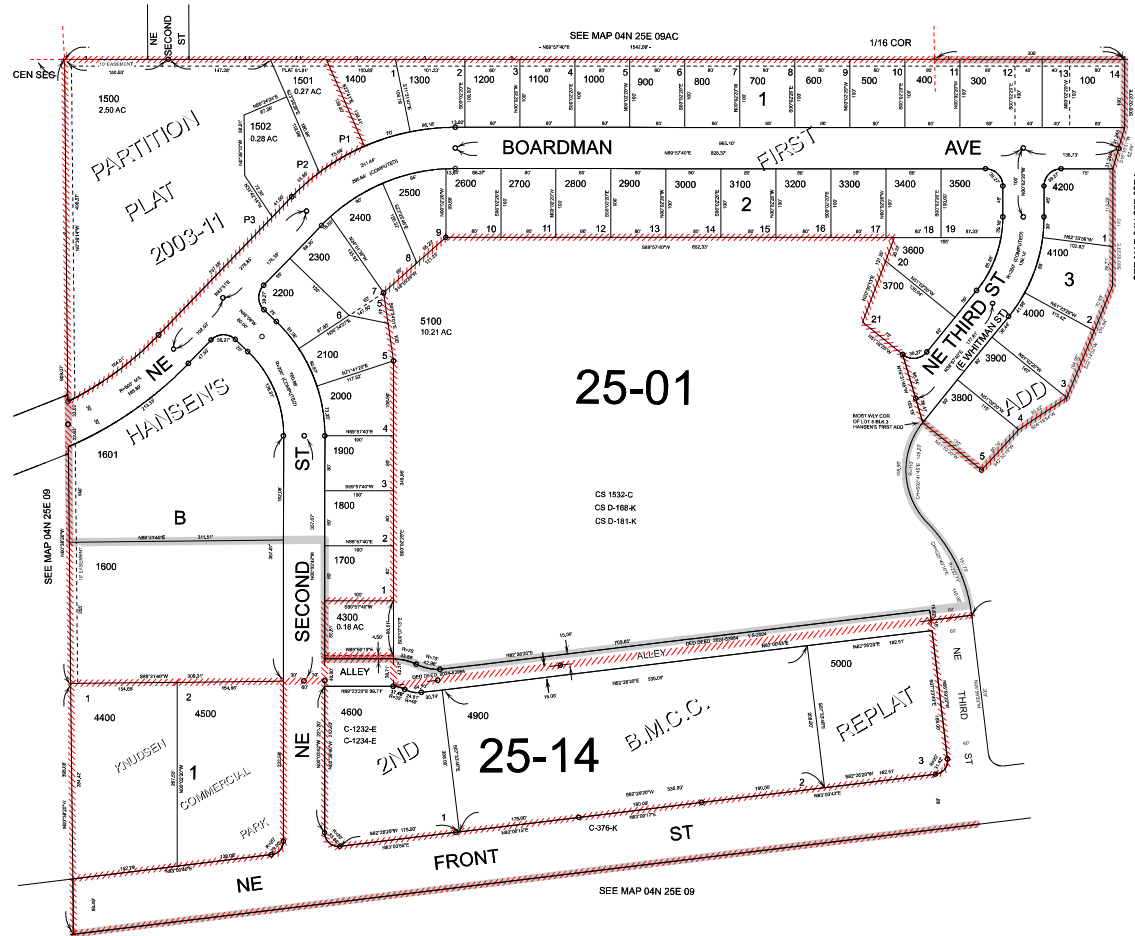
THIS MAP WAS PREPARED FOR  
ASSESSMENT PURPOSE ONLY



N.W. 1/4 S.E. 1/4 SEC. 9 T.4N. R.25E. W.M.  
MORROW COUNTY  
1" = 100'

04N25E09DB  
BOARDMAN

Cancelled  
200  
4700  
4800



25-01

25-14

B.M.C.G.

INTERSTATE

HWY

I-84

Revised: EB  
07/18/2024  
BOARDMAN  
04N25E09DB