

3840 W 5400 S Taylorsville UT, 84129

**CORE** UTAH  
REAL ESTATE



# BUILDING FOR SALE

STAND ALONE INDUSTRIAL BUILDING WITH FENCED YARD FOR LEASE

## TAYLORSVILLE INDUSTRIAL

### Property Summary:

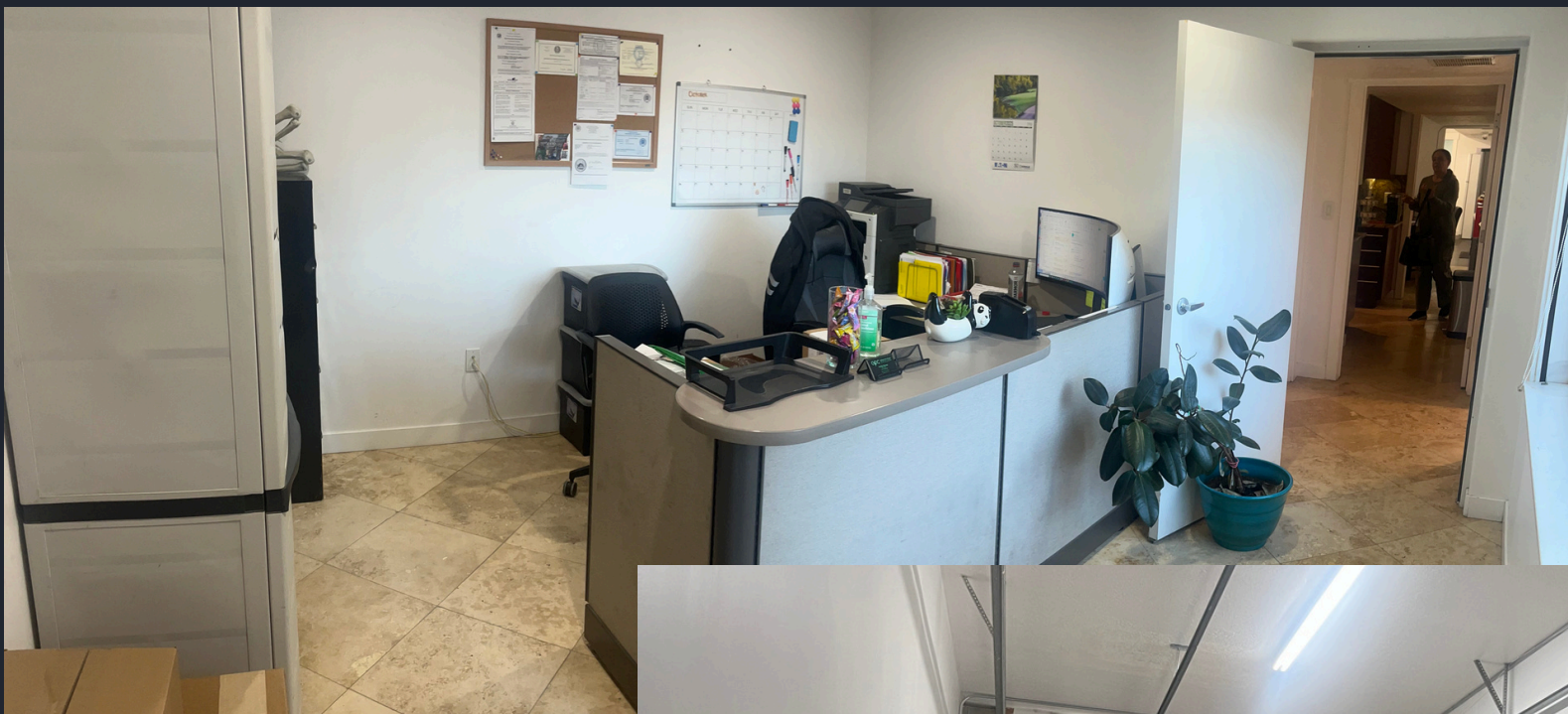
Stand-alone 2,988 SF industrial/flex building in Taylorsville featuring a small warehouse with a drive-in bay door, office space, and a fenced yard for secure storage or parking. Conveniently located near I-215 and Redwood Road, the property offers a functional layout ideal for light industrial, service, or contractor uses.



# PROPERTY HIGHLIGHTS



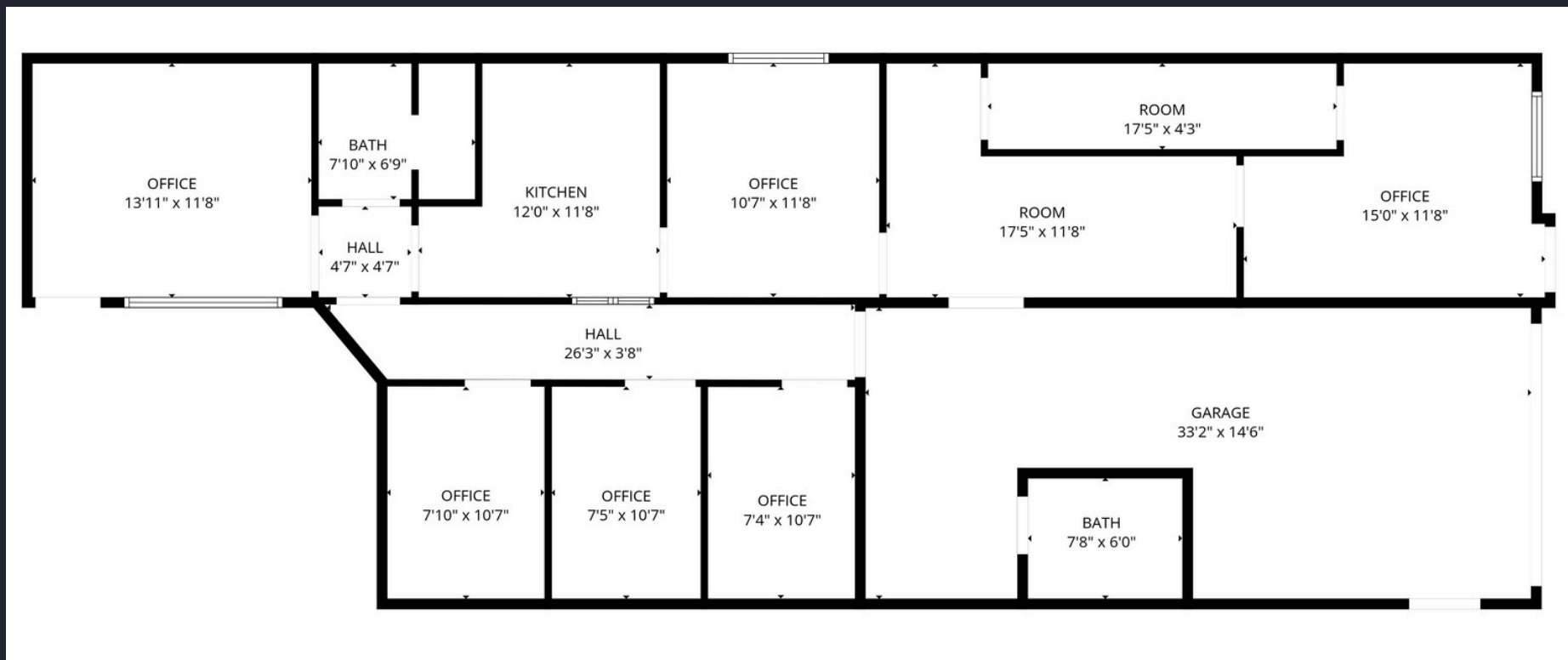
- > Rate: Reach out to Agent for Pricing Details
- > Square Feet - 2,988
- > Fenced Yard
- > Bay Door
- > Mostly Office
- > Approximately 500 sq ft Industrial
- > Furniture Available
- > 2 bathrooms
- > 5 offices
- > Small Kitchenette
- > Large open area for extra storage upstairs



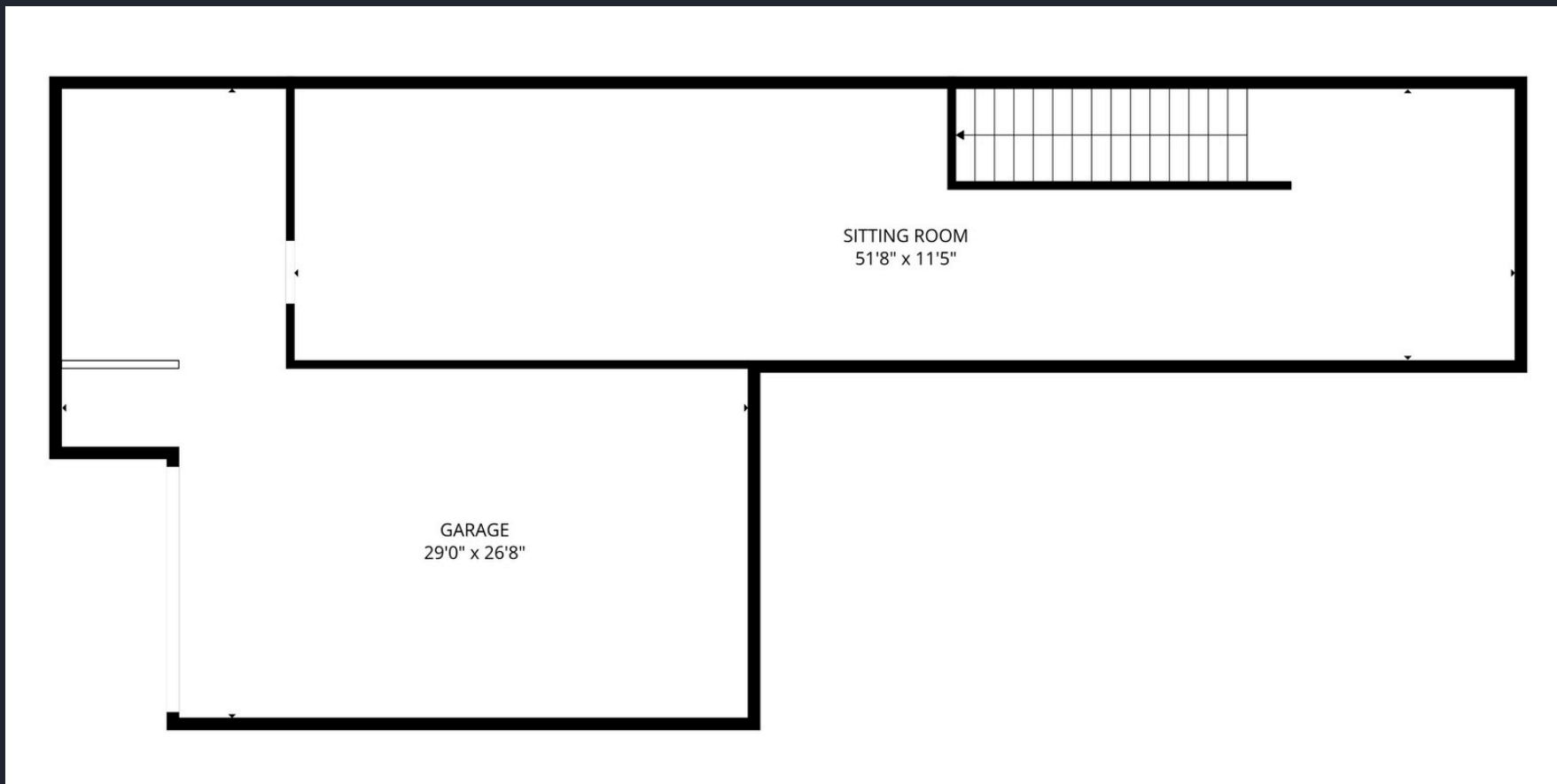




# FLOORPLAN MAIN LEVEL



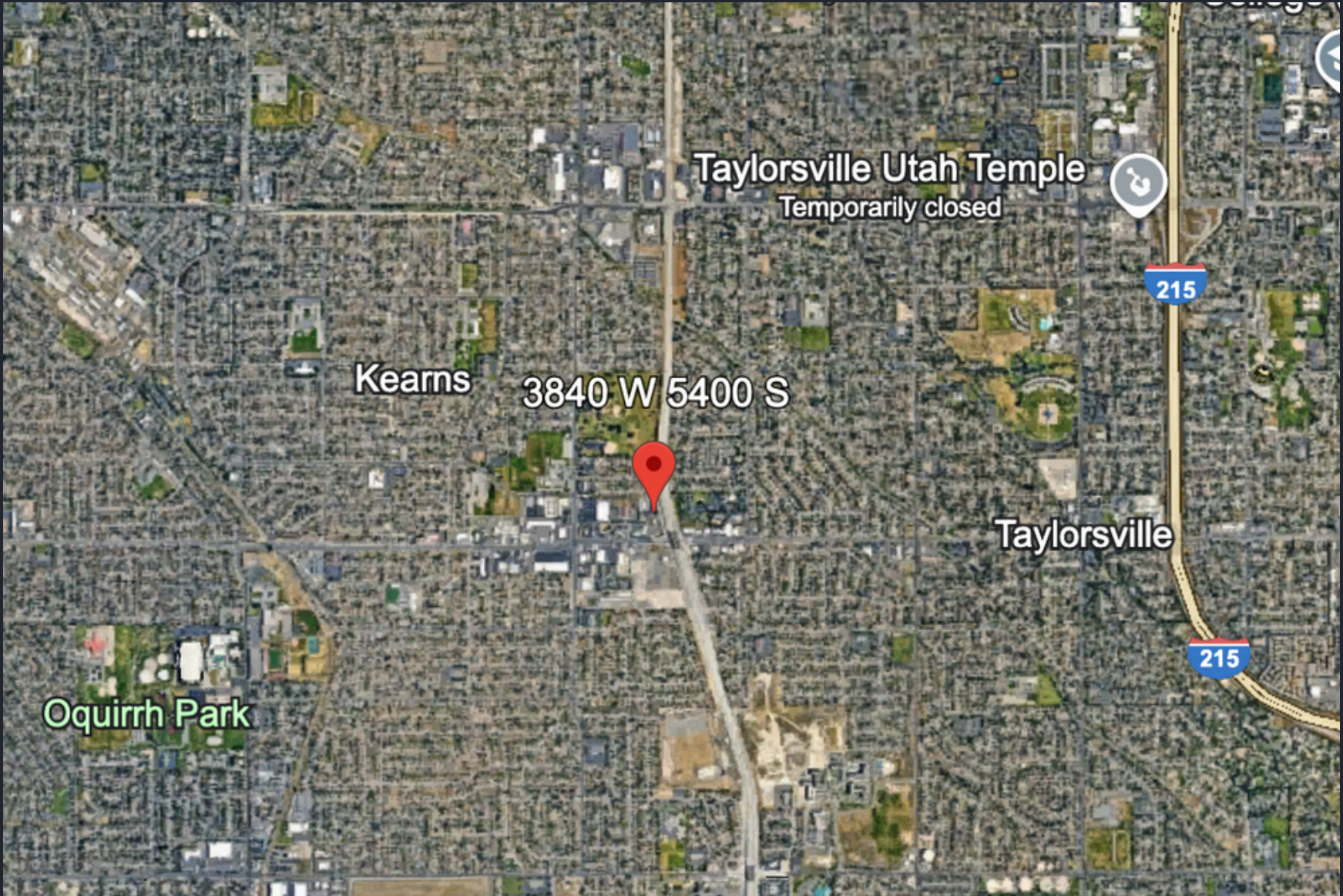
# FLOORPLAN UPSTAIRS



# AERIAL VIEW



# AERIAL VIEW



# CONTACT US TODAY FOR A PRIVATE TOUR!

Caden Butterfield  
Caden@Coreutah.com  
385-350-1811



Buyer to independently verify all square footage and dimensions  
of the property to their own satisfaction.

3840 W 5400 S Taylorsville UT, 84129