



PREMIER COMMERCIAL SUITES FOR LEASE



TABLE OF CONTENTS

EXECUTIVE SUMMARY	3
ABOUT OLYMPIA II	4
SUITE PAGE: UNIT 107	5
FLOOR PLAN: UNIT 107	6
OLYMPIA II TENANT LIST	7
LOCATION OVERVIEW	8
CONTACT US	9

EXECUTIVE SUMMARY

This leasing offering memorandum presents a high-quality commercial suite located within Olympia II.

This first floor storefront offers a combination of visibility, accessibility, and flexibility suitable for a wide range of professional, medical, service, and specialty retail users.

ABOUT OLYMPIA II

PROPERTY OVERVIEW

Olympia II, located at 19060 Everett Boulevard in Mokena, Illinois, is a distinctive premium office property situated in one of the region's most dynamic commercial corridors — just off 191st Street and LaGrange Road, with seamless access to Interstate 80.

KEY FEATURES

- Professional, well-maintained office environment
- Ample on-site parking for tenants and visitors
- Strong visibility in a high-traffic commercial corridor
- Great natural lighting throughout the building
- Signage opportunities available



FOR LEASE

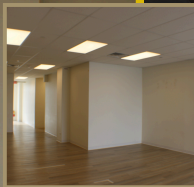
UNIT 107 1950 SF

Unit 107 is a first-floor storefront space at Olympia II, offering strong visibility, efficient layout, and close proximity to established tenants.

KEY

FEATURES

- 1,950 SF
- Reception area
- 2 private offices
- Private restroom
- Kitchen area



TENANT LIST

OLYMPIA II



OZINGA®



LOCATION OVERVIEW

Olympia II

19060 Everett Blvd, Mokena, IL

- La Grange Rd - 46,600 ADT
- 191st Street - 21,700 ADT
- Food: Mindy's Ribs, White Castle, Burger King, Chipotle, Starbucks, Subway, Wendy's
- Other: Shell, BP



19,906
Population

\$129,017
Median Income

44.1
Median Age

The logo for Olympia Properties & Management is displayed on a smartphone screen. The word "Olympia" is written in a large, bold, yellow font, with a stylized yellow and white globe icon above the letter 'y'. Below "Olympia", the words "Properties & Management" are written in a smaller, white, sans-serif font, oriented vertically. The background of the phone screen is black.

Olympia
Properties & Management

Contact us

- 📞 815-277-2255
- ✉️ admin@olympiaproperties.com
- ✉️ realestate@olympiaproperties.com
- 📍 olympiaproperties.com