

9520 W. Fairview Avenue, Boise, ID, 83704

Building E, in West Valley Business Center



SPACE DETAILS

SPACE: 1,512 SF
AVAILABLE: Occupied, Available August 2026
ACCESS: Private entry on north side
LAYOUT: 6 private offices, 3 offices with exterior windows, an open work space, and front reception desk.

PROPERTY FEATURES

BLDG TYPE: Office
BLDG: 7,678 Square Feet (condominiumized)
Owned/Managed
FLOORS: Single Level
PARKING: 4.5/1,000 SF Leased, included
LEASE TYPE: Full Service, Less Tenant Janitorial
ZONING: City of Boise, C-2D

HIGHLIGHTS

- West Valley Business Center is a five building office park in West Boise
- Park provides abundant service and food amenities in immediate area
- Public bus stop on Fairview Avenue
- Managed by Sundance, extremely responsive property management

SITE MAP



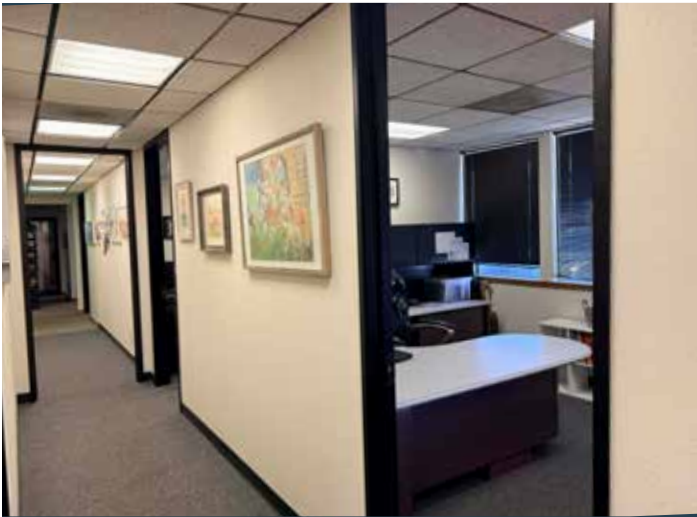
Call: 208-322-7300

WWW.SUNDANCECO.COM



9520 W. Fairview Avenue, Boise, ID, 83704

Building E, in West Valley Business Center



Call: 208-322-7300

WWW.SUNDANCECO.COM



9520 W. Fairview Avenue, Boise, ID, 83704

Building E, in West Valley Business Center



Call: 208-322-7300

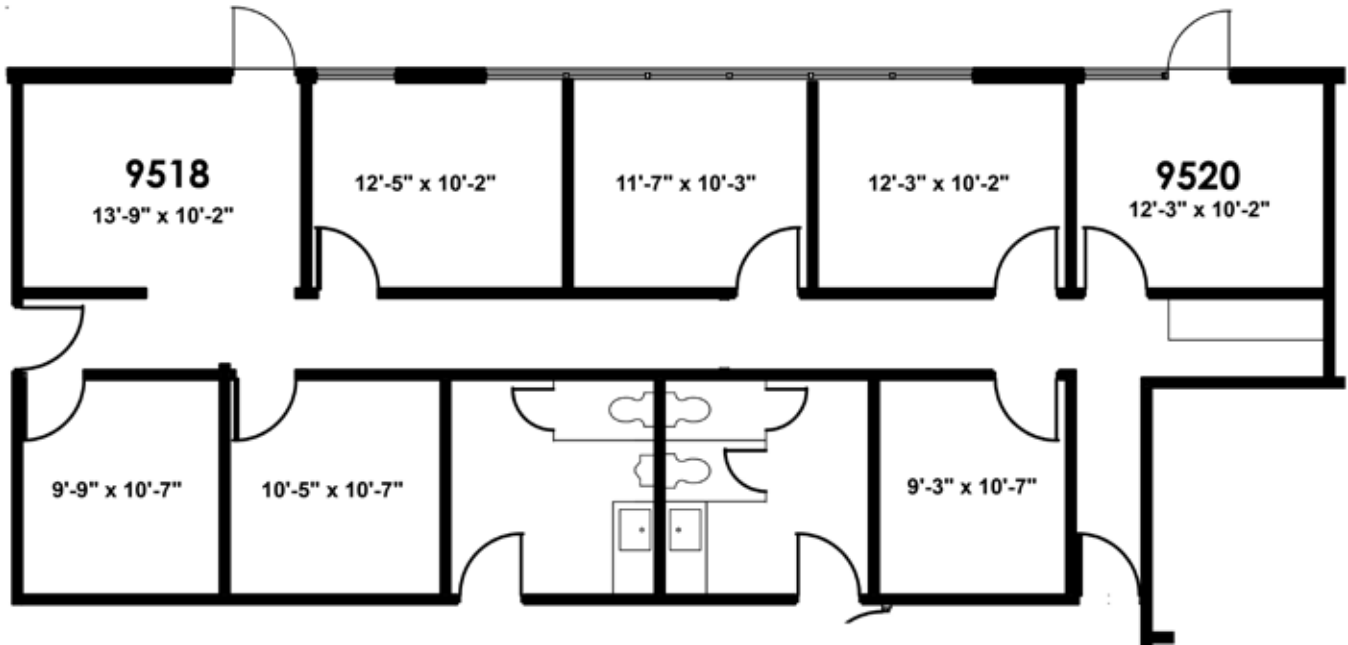
WWW.SUNDANCECO.COM



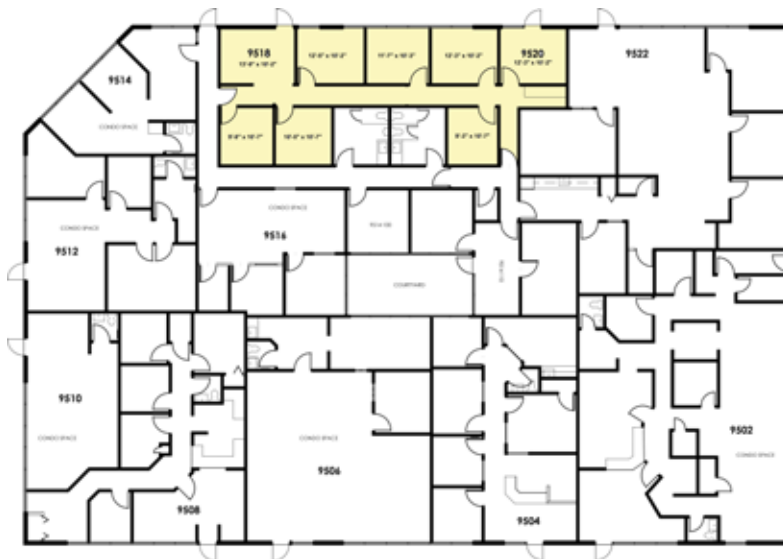
9520 W. Fairview Avenue, Boise, ID, 83704

Building E, in West Valley Business Center

Floor Plan 1,512 SF



Building Plan



Call: 208-322-7300

WWW.SUNDANCECO.COM

