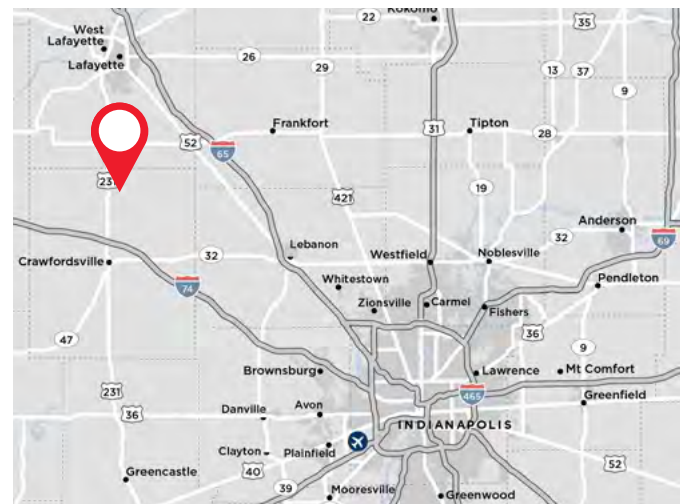




**KEY FEATURES**

- ±45.54 acres
- Zoned Agriculture
- Town of Linden Utilities
- 25 minutes from Lafayette, IN
- 30 minutes from Leap District
- 1 hour to Indianapolis and Indianapolis International Airport
- Asking \$22,000.00 per acre



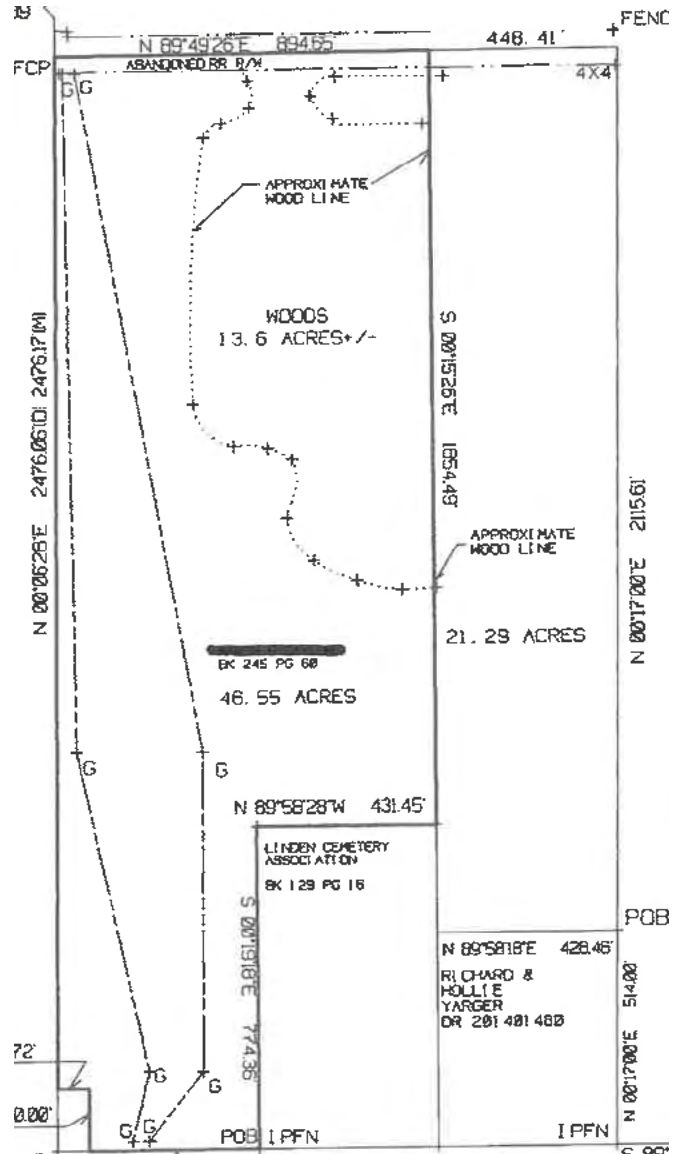
**FOR MORE INFORMATION, CONTACT:**

**Bo Leffel**  
Vice Chair  
+1 317 639 0441  
bo.leffel@cushwake.com

**Matt Kite**  
Director  
+1 317 616 3981  
matt.kite@cushwake.com

**Bob Demaree**  
Associate  
+1 317 352 5847  
bob.demaree@cushwake.com

[cushmanwakefield.com](http://cushmanwakefield.com)



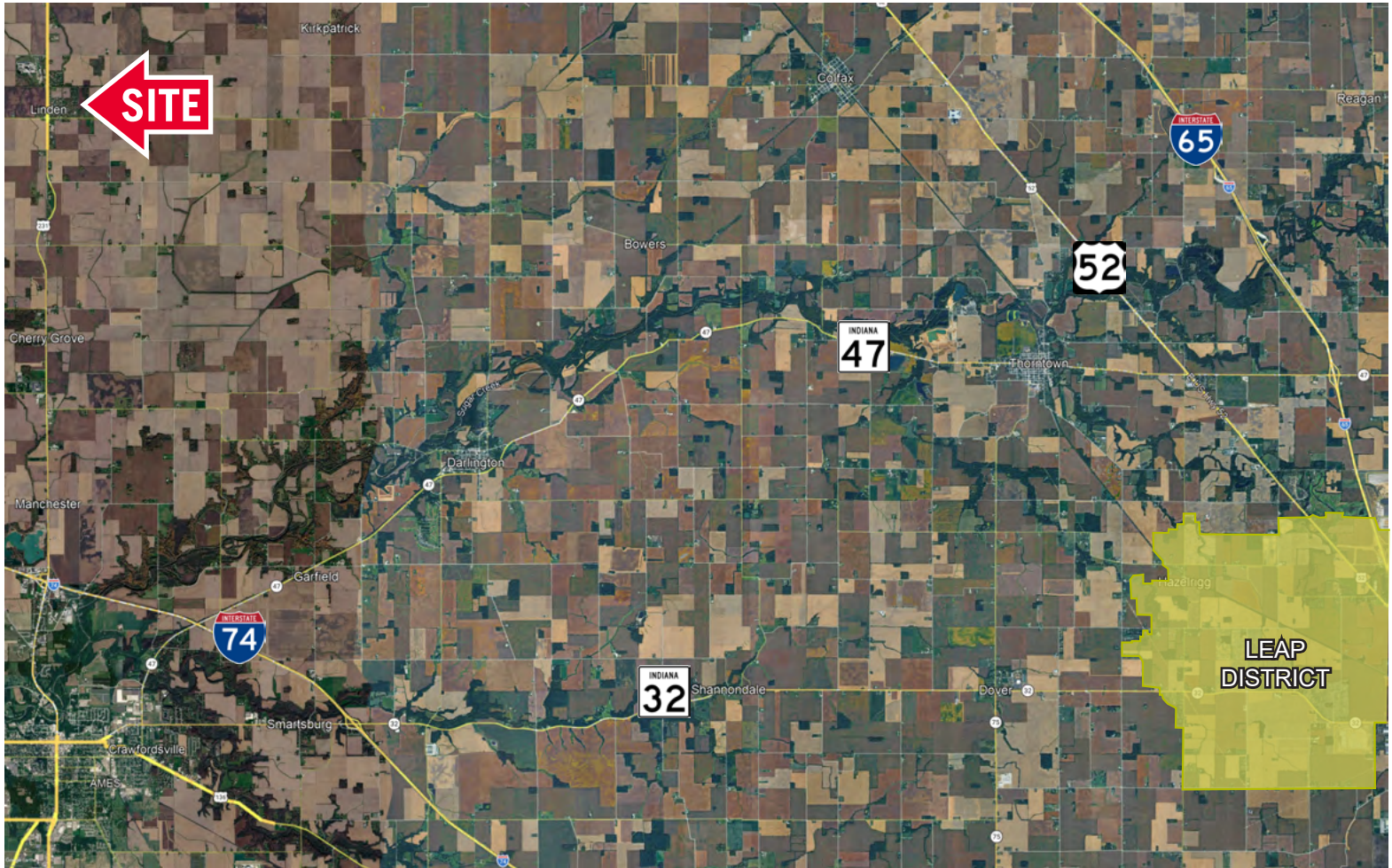
**FOR MORE INFORMATION, CONTACT:**

**Bo Leffel**  
Vice Chair  
+1 317 639 0441  
bo.leffel@cushwake.com

**Matt Kite**  
Director  
+1 317 616 3981  
matt.kite@cushwake.com

**Bob Demaree**  
Associate  
+1 317 352 5847  
bob.demaree@cushwake.com

[cushmanwakefield.com](http://cushmanwakefield.com)



## DEMOGRAPHICS

	1 mile	3 mile	5 mile
<b>Estimated Population</b>	734	1,155	2,562
<b>Avg Household Income</b>	\$87,792	\$92,297	\$102,914
<b>Daytime Population</b>	318	591	1,295

## FOR MORE INFORMATION, CONTACT:

**Bo Leffel**  
Vice Chair  
+1 317 639 0441  
bo.leffel@cushwake.com

**Matt Kite**  
Director  
+1 317 616 3981  
matt.kite@cushwake.com

**Bob Demaree**  
Associate  
+1 317 352 5847  
bob.demaree@cushwake.com

[cushmanwakefield.com](http://cushmanwakefield.com)