



# KECHI BUSINESS PARK ADDITION

FOR SALE 800-1200 Venture Ct., Kechi, KS 67067

**AVAILABLE LAND AREA**  
14,796.9 SF± (0.34 A) UP TO  
113,772.6 SF± (2.60 A)

**MAX CONTIGUOUS**  
80,887.8 SF± (1.856 A)

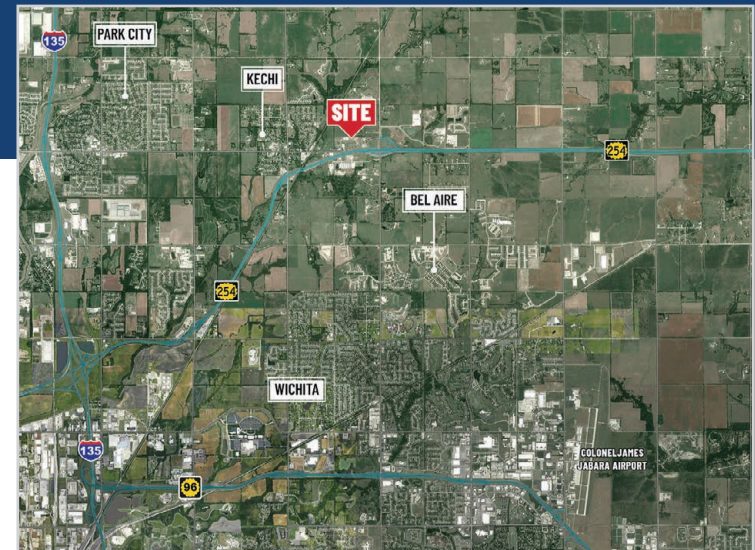
**ZONING**  
C-3, HEAVY COMMERCIAL

**UTILITIES**  
AVAILABLE

## PROPERTY HIGHLIGHTS

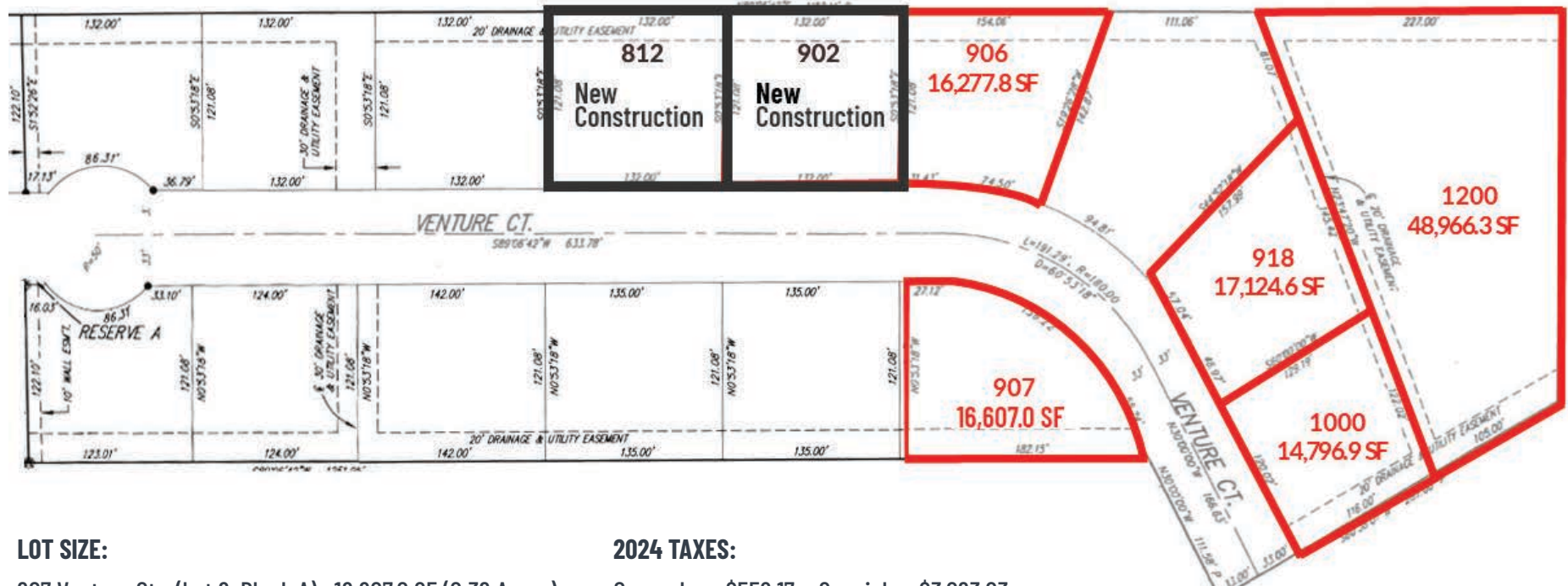
- Development land available for purchase in Kechi Business Park.
- Great visibility from K-254.
- Convenient access to Woodlawn at 61st St. N.
- New construction – Lot 7 (812 E. Venture Ct.)
- New construction – Lot 6 (902 E. Venture Ct.)

Individual lot details on reverse.



**SALE PRICE \$3.75/SF**

## PLAT MAP



### LOT SIZE:

- 907 Venture Ct. (Lot 6, Block A) - 16,607.0 SF (0.39 Acres)
- 1200 Venture Ct. (Lot 1, Block B) - 48,966.3 SF (1.12 Acres)
- 1000 Venture Ct. (Lot 2, Block B) - 14,796.9 SF (0.34 Acres)
- 918 Venture Ct. (Lot 3, Block B) - 17,124.6 SF (0.39 Acres)
- 906 Venture Ct. (Lot 5, Block B) - 16,277.8 SF (0.37 Acres)

### 2024 TAXES:

- Generals - \$552.17; Specials - \$3,093.03
- Generals - \$1,310.34; Specials - \$3,093.03
- Generals - \$509.30; Specials - \$3,093.03
- Generals - \$563.70; Specials - \$3,093.03
- Generals - \$542.25; Specials - \$3,093.03

### NEW CONSTRUCTION:

- 812 Venture Ct. - [See property details here.](#)
- 902 Venture Ct. - [See property details here.](#)



# KECHI BUSINESS PARK ADDITION

FOR SALE 800-1200 Venture Ct. | Kechi, KS 67067

**WEIGAND**  
COMMERCIAL

## AERIAL VIEW



All information furnished regarding property for sale, lease, exchange or financing is from sources deemed reliable but no guarantee is made or responsibility assumed as to its accuracy or completeness and you are advised to make your own analysis and verification. Agent hereby notifies prospective buyer/lessee that (a) Agent will be acting as a designated agent of seller/lessor with the duty to represent seller/lessor's interest; and (b) Information given to Agent will be disclosed to seller/lessor.



Grant Tidemann, SIOR  
316-292-3908  
tidemann@weigand.com

Bradley Tidemann, SIOR  
316-650-8853  
bradley@tidemannre.com

