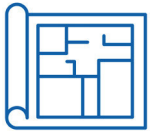


**FOR LEASE | 1703 E SKELLY**  
1703 E Skelly Dr, Tulsa, Oklahoma 74105

**WIGGIN**  
PROPERTIES, LLC



**723**

Square feet

Available SF



**\$850/mo**

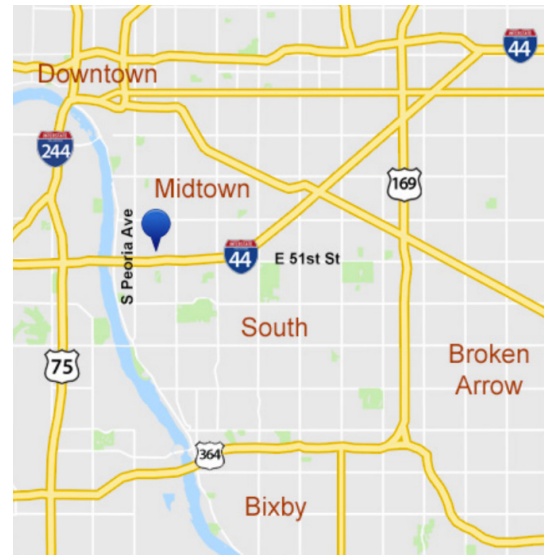
+ Full Service

Lease Rate



**Office**

Property Type



## HIGHLIGHTS

- ✓ Versatile space with 24hr access
- ✓ Monitored security & camera surveillance
- ✓ Central Tulsa location off I-44 & S Utica Ave
- ✓ Internet & phone ready
- ✓ Common area kitchenette & restrooms
- ✓ On-site property management & janitorial services

## AREA DEMOGRAPHICS

2025	1 Mile	3 Miles	5 Miles
Total Households	7,096	36,898	93,457
Total Population	14,414	79,327	205,511
Median HH Income	\$53,191	\$60,178	\$61,578

**Vicki Patterson, CCIM**

VP of Brokerage

**918.519.6731**

[vpatterson@wigginprop.com](mailto:vpatterson@wigginprop.com)

**Erica Cunningham, CCIM**

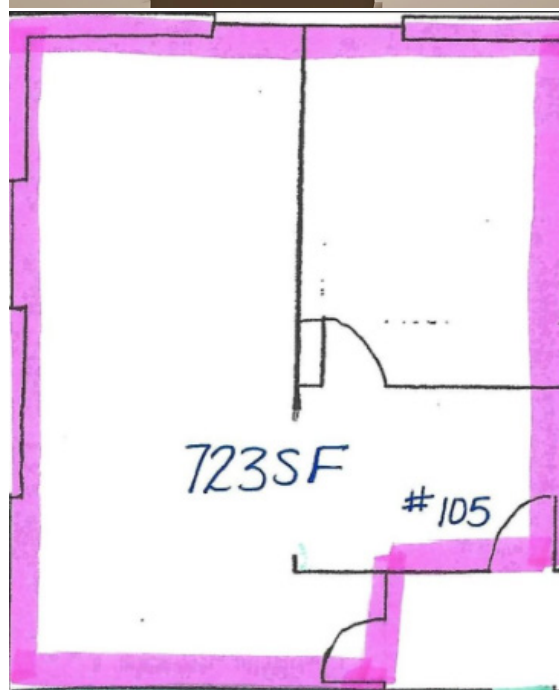
Advisor

**918.829.5754**

[ecunningham@wigginprop.com](mailto:ecunningham@wigginprop.com)

**FOR LEASE | 1703 E SKELLY**  
1703 E Skelly Dr, Tulsa, Oklahoma 74105

**WIGGIN**  
PROPERTIES, LLC



**Vicki Patterson, CCIM**

VP of Brokerage

**918.519.6731**

[vpatterson@wigginprop.com](mailto:vpatterson@wigginprop.com)

**Erica Cunningham, CCIM**

Advisor

**918.829.5754**

[ecunningham@wigginprop.com](mailto:ecunningham@wigginprop.com)

This material is provided for information purposes only. It is from sources believed to be reliable. However, Wiggin Properties makes no warranties or representations, expressed or implied, as to the accuracy or sufficiency of the information. It is presented subject to errors, omissions, changes or withdrawal without notice. Square footage is provided by the local County Assessor or the Owner. Photos and graphics with copyrights by Costar, Google, Wiggin Properties and independent contractors are used with permission.