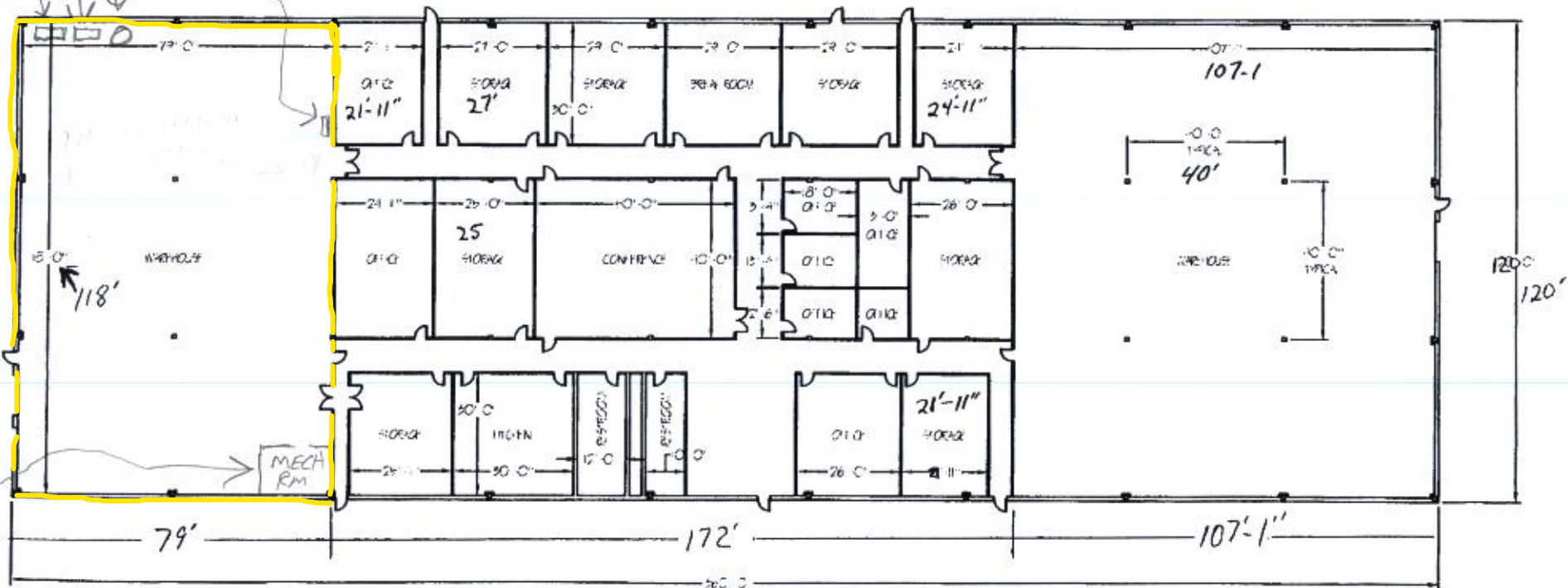


208/120/3 $\phi$ /300A PANEL

208/120/200A PANEL 3 $\phi$

MAIN WET SPRINKLER SYSTEM FOR ENTIRE BUILDING

208/120/1 $\phi$ /150A



MECHANICAL RM WITH 5HP AIR COMPRESSOR 360'

MAIN POWER FOR ENTIRE BUILDING

AVAILABLE POWER FROM HERE FOR SOUTH END

480V/3/100A

EXISTING 480V/3 IN SOUTH END:

2- 480/20/3

1- 480/60/3



TIPPMANN & ASSOCIATES  
 2300 MEYER RD  
 Fort WAYNE, IN 46803
