

**AVAILABLE
FOR SALE**

**COMPASS
COMMERCIAL**



OFFERING MEMORANDUM

**315 N 10TH ST, SAN JOSE
CA 95112**

JALILI
COMMERCIAL GROUP

315 N 10TH ST, SAN JOSE CA 95112

CONFIDENTIALITY & DISCLAIMER

All materials, agents, advisors, affiliates and/or any third party sources are provided without representation or warranty as to completeness, veracity, or accuracy, condition of the property, compliance or lack of compliance with applicable governmental requirements, developability or suitability, financial performance of the property, projected financial performance of the property for any party's intended use or any and all other matters.

Neither Compass Commercial -San Francisco & Los Angeles its directors, officers, agents, advisors, or affiliates makes any representation or warranty, express or implied, as to accuracy or completeness of the any materials or information provided, derived, or received. Materials and information from any source, whether written or verbal, that may be furnished for review are not a substitute for a party's active conduct of its own due diligence to determine these and other matters of significance to such party. Compass Commercial -San Francisco & Los Angeles will not investigate or verify any such matters or conduct due diligence for a party unless otherwise agreed in writing.

EACH PARTY SHALL CONDUCT ITS OWN INDEPENDENT INVESTIGATION AND DUE DILIGENCE

Any party contemplating or under contract or in escrow for a transaction is urged to verify all information and to conduct their own inspections and investigations including through appropriate third party independent professionals selected by such party. All financial data should be verified by the party including by obtaining and reading applicable documents and reports and consulting appropriate independent professionals. Compass Commercial -San Francisco & Los Angeles makes no warranties and/or representations regarding the veracity, completeness, or relevance of any financial data or assumptions. Compass Commercial -San Francisco & Los Angeles does not serve as a financial advisor to any party regarding any proposed transaction. All data and assumptions regarding financial performance, including that used for financial modeling purposes, may differ from actual data or performance. Any estimates of market rents and/or projected rents that may be provided to a party do not necessarily mean that rents can be established at or increased to that level. Parties must evaluate any applicable contractual and governmental limitations as well as market conditions, vacancy factors and other issues in order to determine rents from or for the property.

Legal questions should be discussed by the party with an attorney. Tax questions should be discussed by the party with a certified public accountant or tax attorney. Title questions should be discussed by the party with a title officer or attorney. Questions regarding the condition of the property and whether the property complies with applicable governmental requirements should be discussed by the party with appropriate engineers, architects, contractors, other consultants and governmental agencies. All properties and services are marketed by Compass Commercial -San Francisco & Los Angeles in compliance with all applicable fair housing and equal opportunity laws.

Is and information received or derived from Compass Commercial -San Francisco & Los Angeles its directors, officers,

Table of Contents

03 Offering Summary

04 Property Photos

08 Plan Overview

15 Market Overview



Sam Jalili
Executive Vice President
License: CA 02053100
408.316.2157
sam.jalili@compass.com

OFFERING SUMMARY

\$1,899,000.00



Address	315 N 10 th Street
City/State/Zip	San Jose, CA 95112
APN	249-52-076
Building Size	±4,314 SQ FT
Lot Size	6,098
Year Built	1930
Zoning	Commercial / Special Purpose (Church)

HIGHLIGHTS

- **Commercial / Special Purpose (Church)**
- **Large Gathering area (120 seats)**
- **Gated property line**
- **Kitchen**
- **Stage**
- **Gated Sideyard**



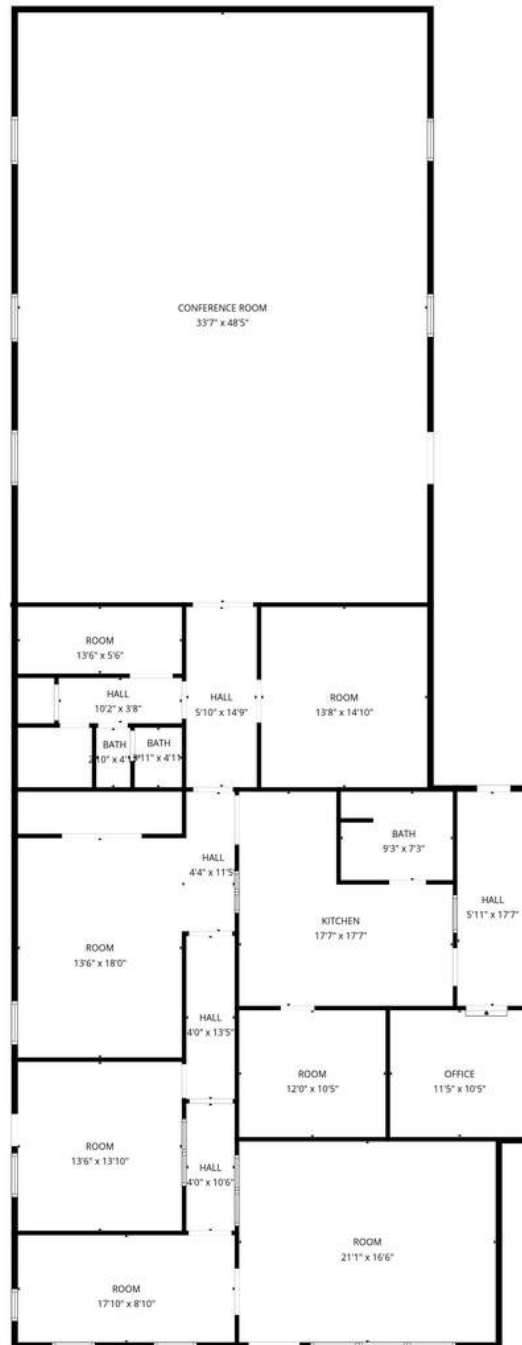
315 N 10th Street, San Jose, CA 95112 is a centrally located commercial property in the heart of Downtown San Jose, just minutes from Japantown, San Jose State University, and the city's core employment and cultural hubs. The property offers approximately 4,314 square feet of building area and is positioned within a dense, urban infill neighborhood that continues to attract investment and redevelopment. Excellent access to Highway 87, I-280, and I-880 enhances regional connectivity, while nearby public transit options further strengthen accessibility for users and tenants.

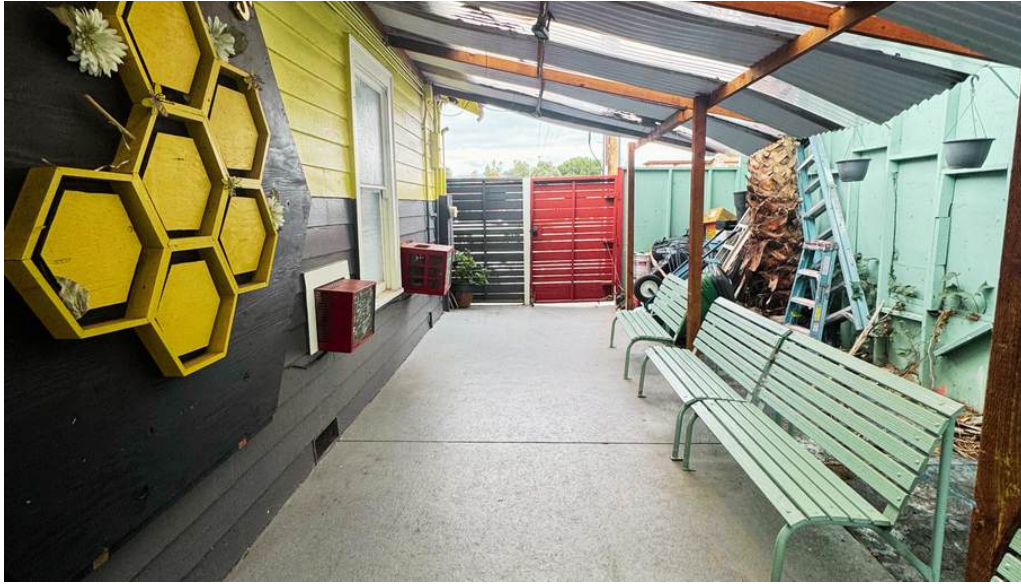
The surrounding area is experiencing ongoing residential, office, and mixed-use growth, driving increased foot traffic and long-term demand for well-located commercial assets. The property's proximity to downtown amenities, major employers, and expanding housing stock supports stable tenancy and future upside. 315 N 10th Street represents a compelling opportunity for both investors and owner-users seeking a strategically located asset in one of Silicon Valley's most dynamic and supply-constrained submarkets.

SITE PLAN



FLOORPLAN











INTERIOR PHOTOS



120 Seat Assembly Room

COMPASS
COMMERCIAL

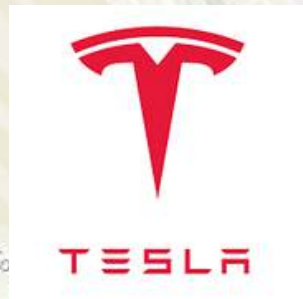






RETAILER MAP

SUBJECT PROPERTY



San Jose

Sunol-Midtown

Kelly Park

Coyote Creek Park Chain

Regional Medical Center of San Jose

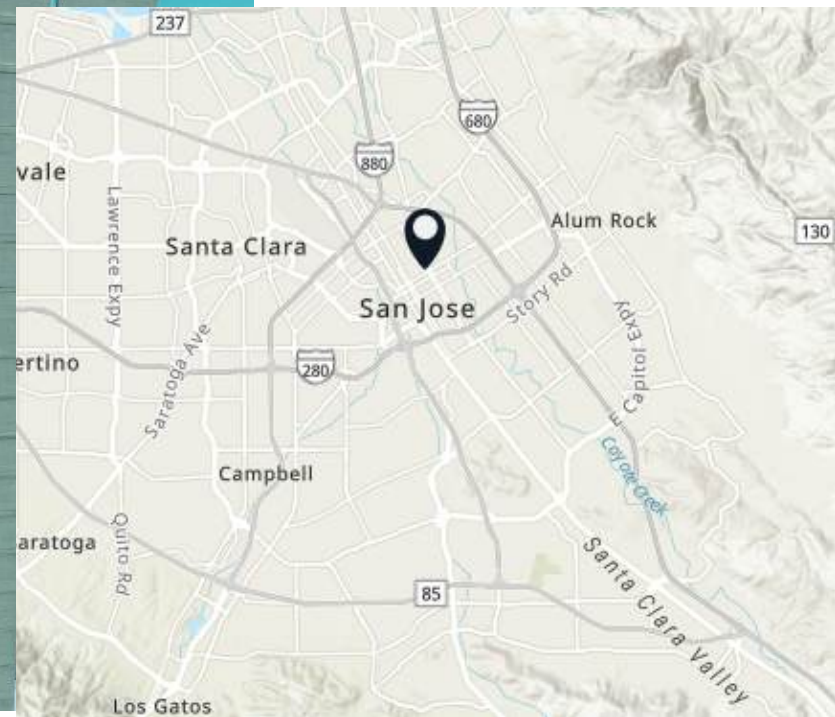
Plato Arroyo Park

Rancho del Pueblo Golf Course

P.A.L. Sportscenter

Coyote Creek Parkchain

Buena Vista
COMPASS
COMMERCIAL



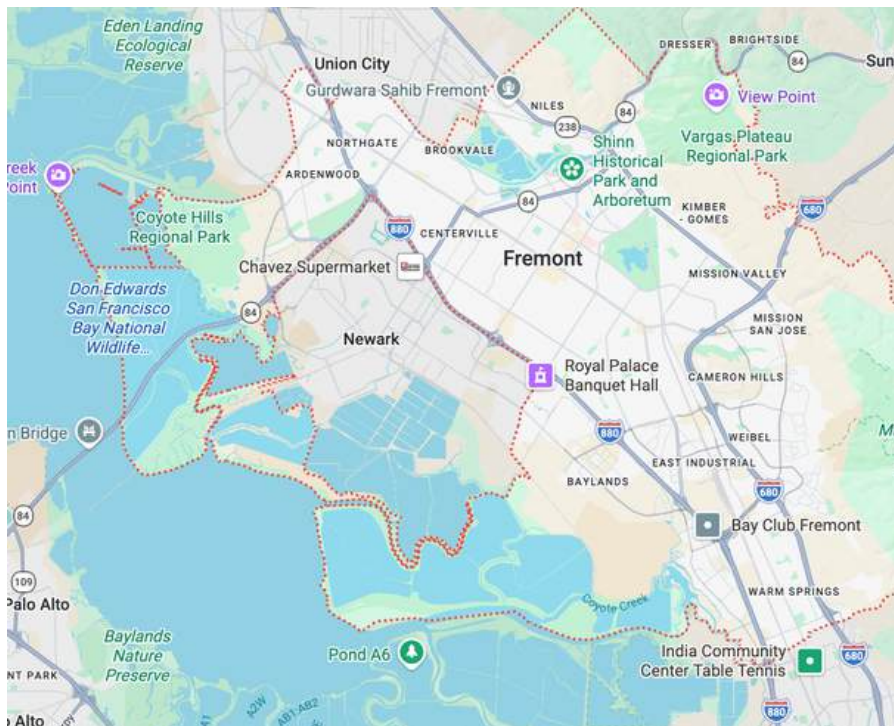
San Jose | CA

San Jose, California is the economic and cultural center of Silicon Valley and the third-largest city in California. Known globally as a hub for innovation and technology, San Jose is home to major employers spanning tech, life sciences, advanced manufacturing, and professional services. The city benefits from a highly educated workforce, strong median household incomes, and a diverse population that contributes to its dynamic business environment. With direct access to major highways, Caltrain, light rail, and Norman Y. Mineta San Jose International Airport, San Jose offers exceptional regional and global connectivity.

Beyond its role as a technology powerhouse, San Jose continues to evolve as a vibrant urban center with significant investment in downtown revitalization, transit-oriented development, and housing. The city features a growing mix of residential, office, retail, and entertainment uses, supported by institutions such as San José State University and a thriving arts and dining scene. Limited land availability, continued job growth, and long-term population demand position San Jose as one of the most resilient and desirable real estate markets in Northern California.

San Jose, California – Demographic Snapshot Category Data

- **Median Age: 38.1 years** (slightly younger for males at ~37.2 years and older for females at ~39.1 years).
- **Gender Distribution: Approximately 49.1% female and 50.9% male.**
- **Median Household Income: \$141,565** (one of the highest in the U.S. for large cities, driven by the tech industry).
- **Per Capita Income: Around \$63,253.**
- **Poverty Rate: Approximately 7.85–8%.**
- **Foreign-Born Residents: About 41.6% of the population was born outside the U.S., contributing to its high diversity.**



Household Income Range % of Households

Less than \$25,000	~8%
\$25,000 – \$49,999	~9%
\$50,000 – \$74,999	~9%
\$75,000 – \$99,999	~9%
\$100,000 – \$149,999	~17%
\$150,000 – \$199,999	~13%
\$200,000+	~34%





COMPASS
COMMERCIAL

JALILI
COMMERCIAL GROUP



Sam Jalili
Executive VP
CA Lic: 02053100



Theodore Wong, CCIM
VP
CA Lic: 02016737



Lee Cao
Associate CA
Lic: 02333243



Natalie Jiang
Associate
CA Lic: 02035151



Justin Hughes
Associate
CA Lic: 02246090



Robert Sharrock
Senior Associate
CA Lic: 01963433




Rai Lee
Associate
CA Lic: 02118177



Aparna Sayana
Senior Associate
CA Lic: 01387613



Jasmine Barajas Chang
Brokerage Services
Coordinator



Sam Jalili

Executive Vice President

License: CA 02053100

408.316.2157

sam.jalili@compass.com



CHURCH SALES | LEASING | INVESTING



COMPASS
COMMERCIAL

JALILI
COMMERCIAL GROUP