



EASTOWNE OFFICE PARK

141 Providence Rd, Suite 110
Chapel Hill, NC

FOR LEASE

740 SF | \$2,400/Month

FULL-SERVICE LEASE

MOVE-IN READY OFFICE SUITE WITH RECEPTION + 3 PRIVATE OFFICES

Ideal for medical, counseling, or professional office users.

Professional, newly renovated office suite located in the highly desirable Eastowne Office Park. This efficient 740 SF layout offers a welcoming reception area and three private offices—perfect for medical, counseling, or general office users.



RECEPTION AREA



PRIVATE OFFICE



PRIVATE OFFICE



LOBBY



SUITE FEATURES

- 740 SF efficient layout
- Reception area with updated flooring
- Three (3) private offices
- Fresh paint and new carpet throughout
- First-floor suite with interior hallway access
- Ample natural light
- Storage/closet space



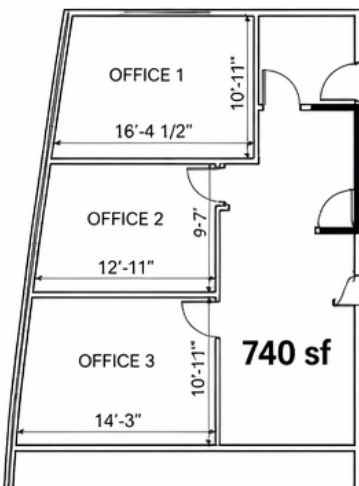
BUILDING FEATURES

- Striking glass atrium entrance
- Two-story lobby with Class A feel
- Well-maintained professional environment
- Shared restrooms conveniently located across the hall
- Easy access to I-40, UNC, and Eastowne retail corridor



LEASE DETAILS

- Full-Service Lease (utilities + trash included)
- Flexible lease terms
- Optional office furniture available
- Immediate occupancy



Conveniently located minutes from I-40, UNC, UNC Hospitals, and Eastowne retail and dining amenities.

CONTACT

Lewis Hendricks

828-434-0678

lewis@boldnc.com