

# SOUTHPARK BUSINESS CENTER

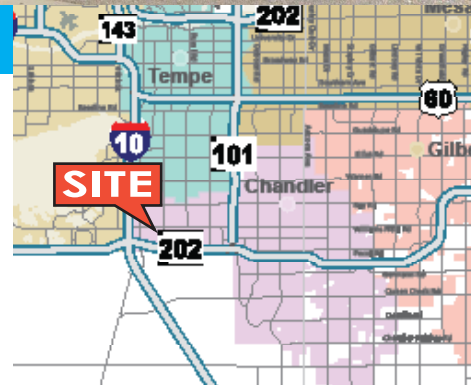
6145 W DETROIT ST | CHANDLER, AZ 85226

25,000 SF 100% Air Conditioned Industrial Warehouse  
with Outdoor Storage On ±1.93 Acres



## Building & Site Features

- Building Size: ±25,000 SF (±3,500 SF Office)
- Site Area: ±1.93 Acres
- Heavy Power: (1) 277/480V, 1600A, 3Ph & (1) 277/480V, 3600Amps
- 100% AC'd Warehouse
- Fire Sprinklers
- Clear Height: 22'
- (2) 2 Ton Craneways, (1) 1/4 Ton Craneway
- (1) Truckwell & (1) 12' x 14' Grade Level Door
- Auxiliary Generator
- Zoning: I-1 Light Industrial, City of Chandler
- Outside Storage Yard
- Less than 1.5 miles from I-10 & Santan Loop 202 Fwys
- Lease Rate: \$1.30/SF/MO NNN



**Jeff Hays**

D 480.889.2552

M 602.373.8800

[jhays@cpiaz.com](mailto:jhays@cpiaz.com)

**Sam Rutledge**

D 480.621.3292

M 602.397.6655

[srutledge@cpiaz.com](mailto:srutledge@cpiaz.com)



**COMMERCIAL PROPERTIES INC.**

Locally Owned. Globally Connected. CDPAC

TEMPE: 2323 W University Drive, Tempe, AZ 85281 | 480.966.2301  
SCOTTSDALE: 8767 E Via de Commercio, Suite 101, Scottsdale, AZ 85258 | [www.cpiaz.com](http://www.cpiaz.com)

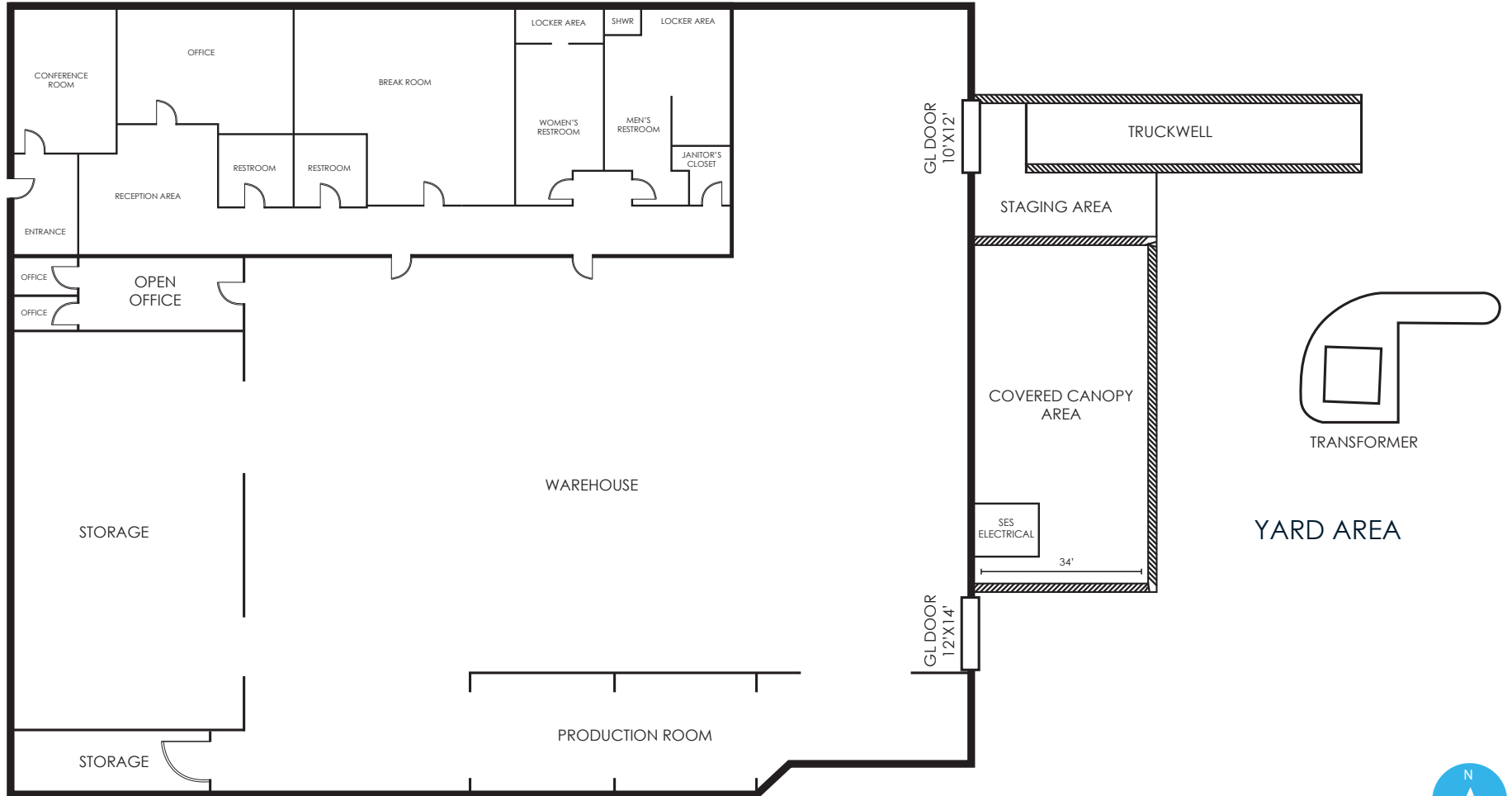
The information contained herein has been obtained from various sources. We have no reason to doubt its accuracy; however, J & J Commercial Properties, Inc. has not verified such information and makes no guarantee, warranty or representation about such information. The prospective buyer or lessee should independently verify all dimensions, specifications, floor plans, and all information prior to the lease or purchase of the property. All offerings are subject to prior sale, lease, or withdrawal from the market without prior notice. 06 15 26

**6145 W DETROIT ST CHANDLER, AZ 85226**

**\$1.30/SF/MO NNN**



# FLOOR PLAN



## ALTA SURVEY

