



1600 Pearl Street

Boulder, CO

Retail Space on Pearl Street's East End

Chris Boston, CCIM, MBA

cboston@gibbonswhite.com

(303) 586-5930

Kegan McNutt

kegan@gibbonswhite.com

(303) 586-5929

www.gibbonswhite.com

[Property Info & Gallery](#)

[View Map](#)

Available Space	14,614 - 25,647 sq. ft.
Lease Rate / sq. ft.	Negotiable

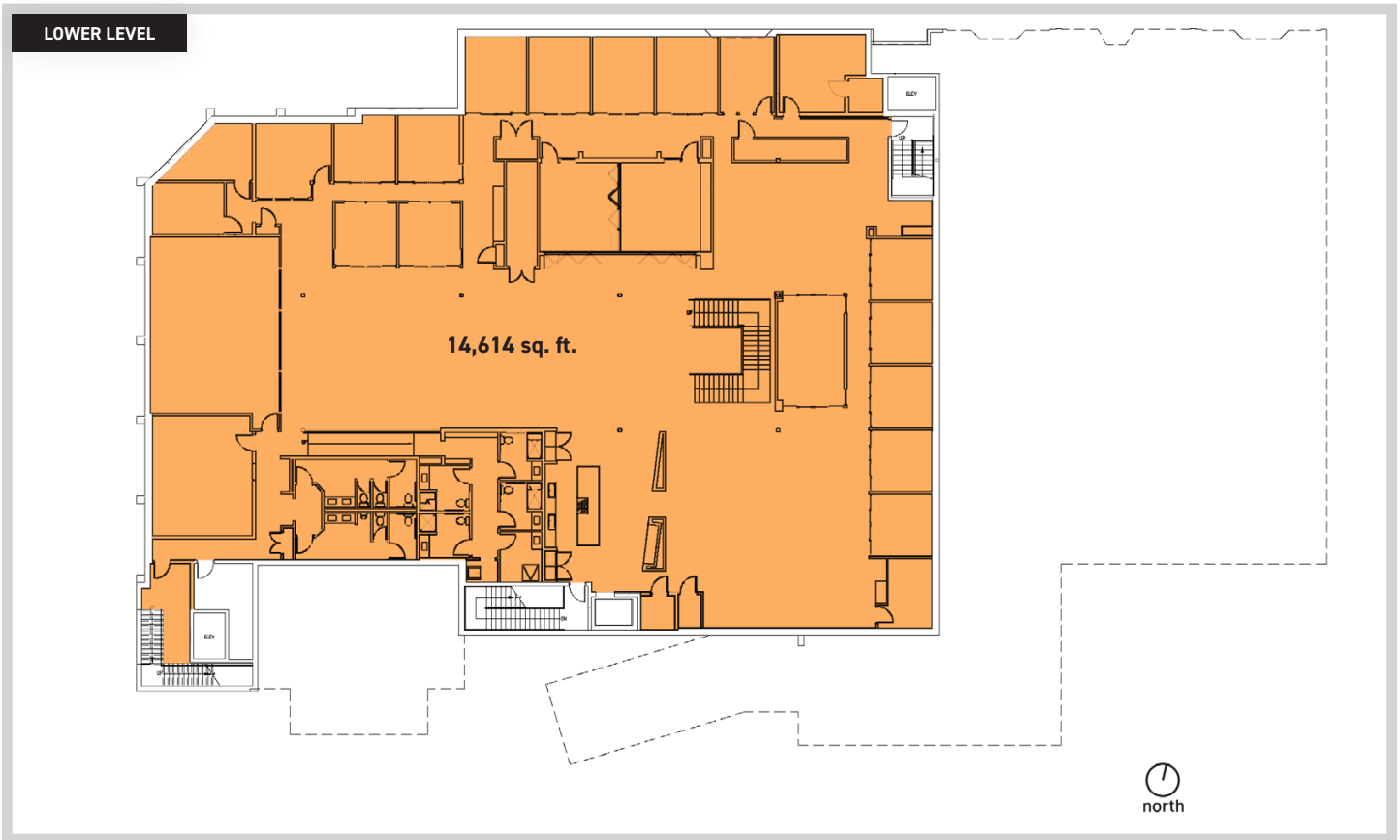
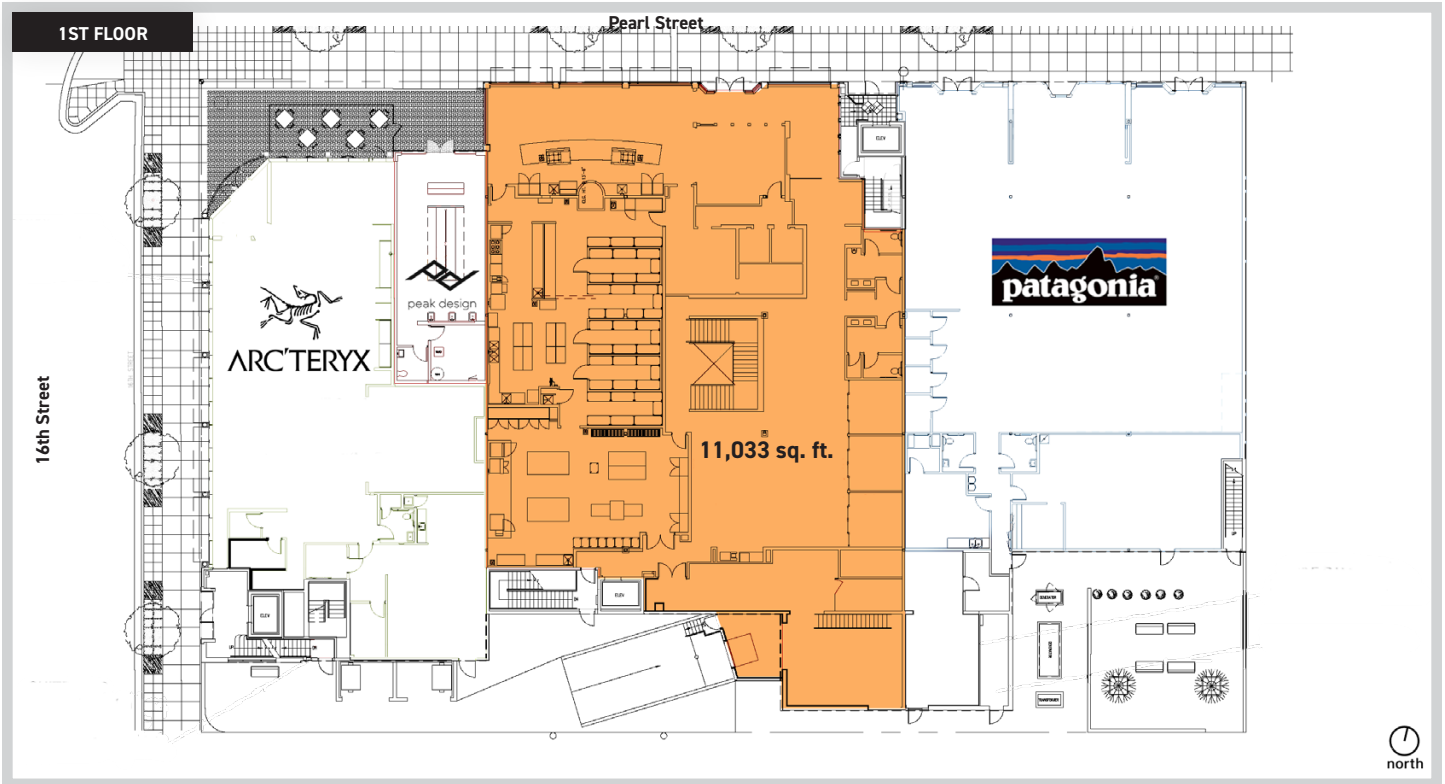
- Incredible Storefront Exposure on Pearl Street
- Modern Finishes with Tall, Exposed Ceilings Throughout
- Existing Restaurant Infrastructure in Place
- Potential to Lease the Basement Level Separate from the 1st Floor
- Ample Street Parking & Easy Access to the City Parking Garage Across the Street
- Great Neighboring Tenants Including: Arc'teryx, Peak Design, Patagonia, Sweetgreen, Snooze & Many More

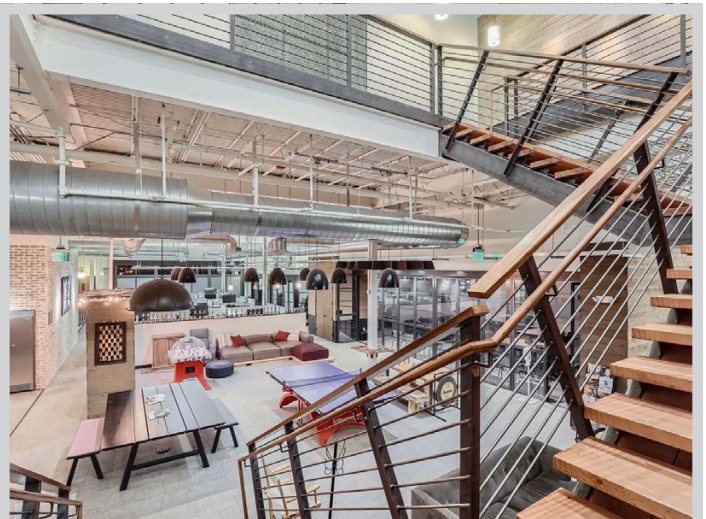
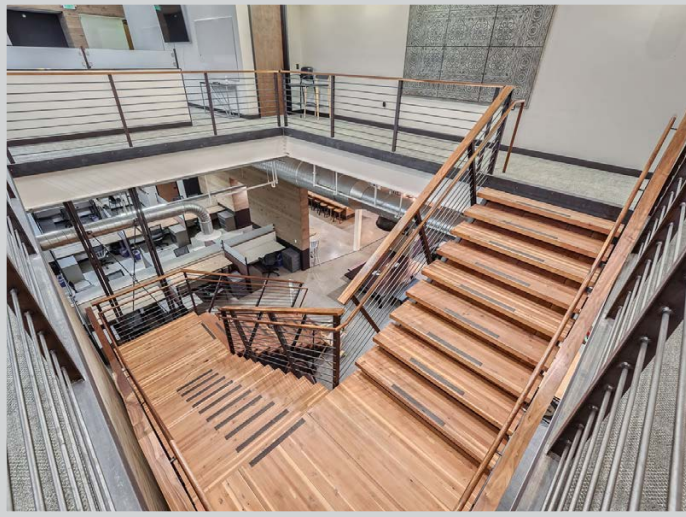


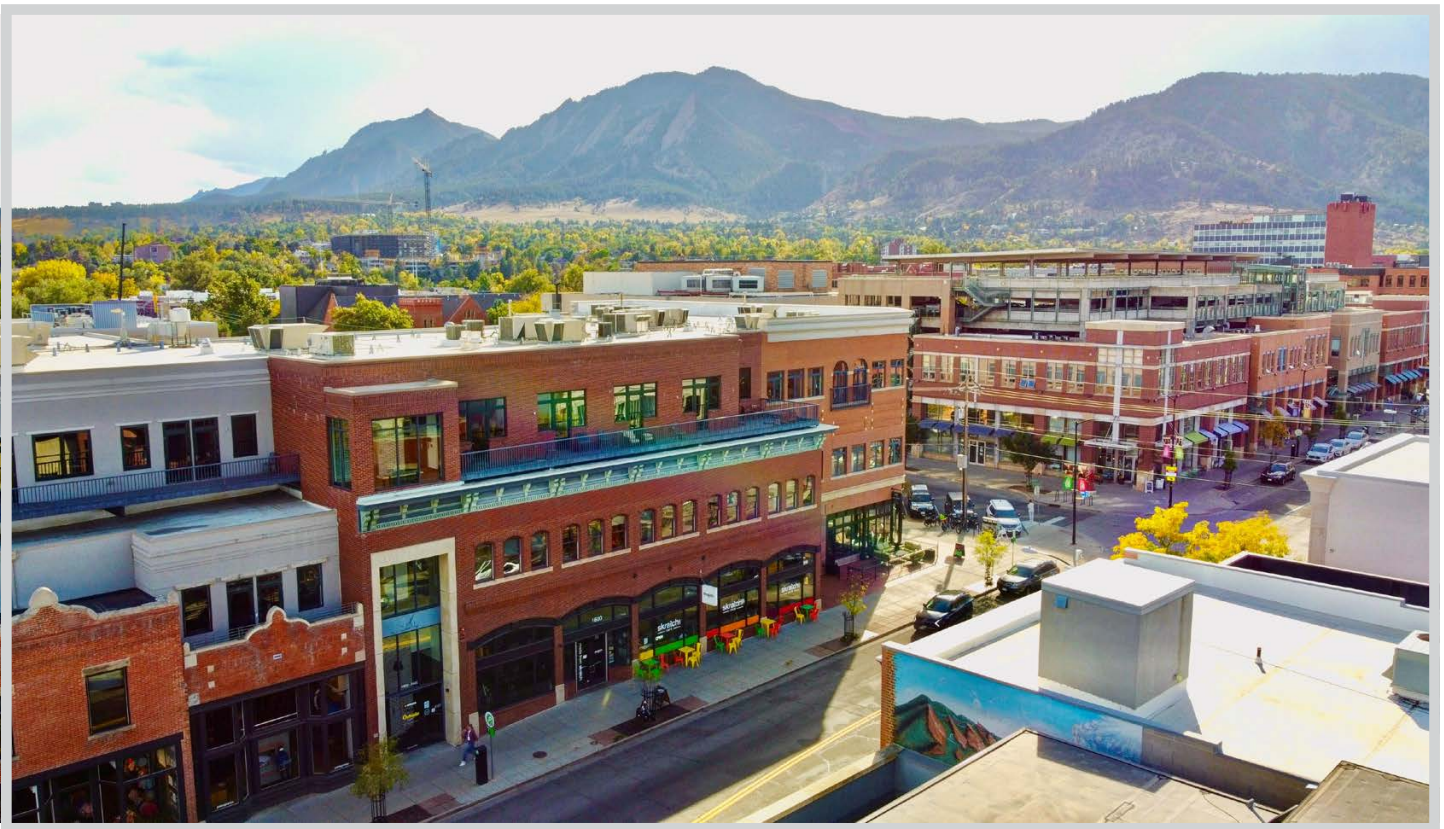
2305 Canyon Blvd, Suite 200, Boulder, CO 80302 • (303) 442-1040

The information included has been obtained from sources believed reliable. While we do not doubt the accuracy, it is unverified and no representation is being made.

© 2026 Gibbons-White, Inc.

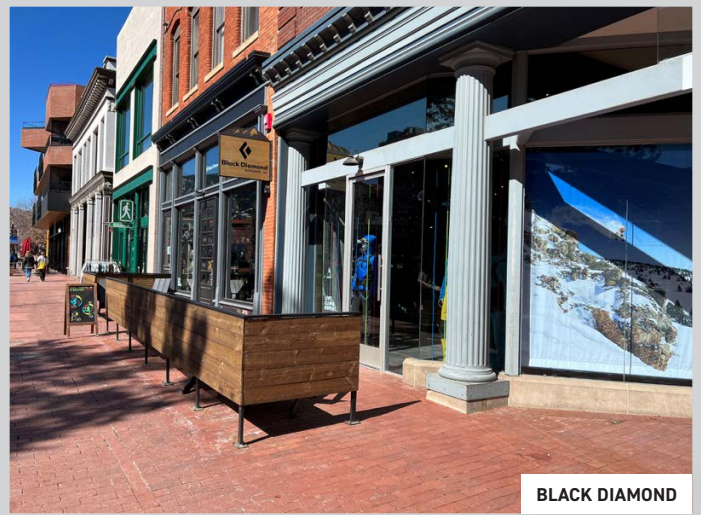




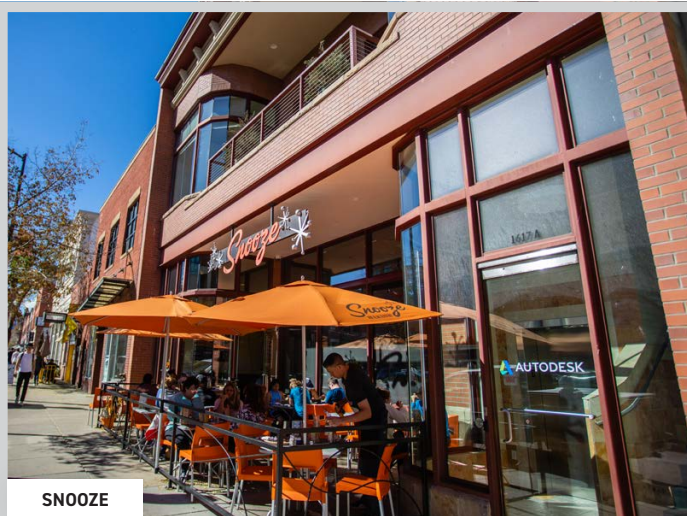
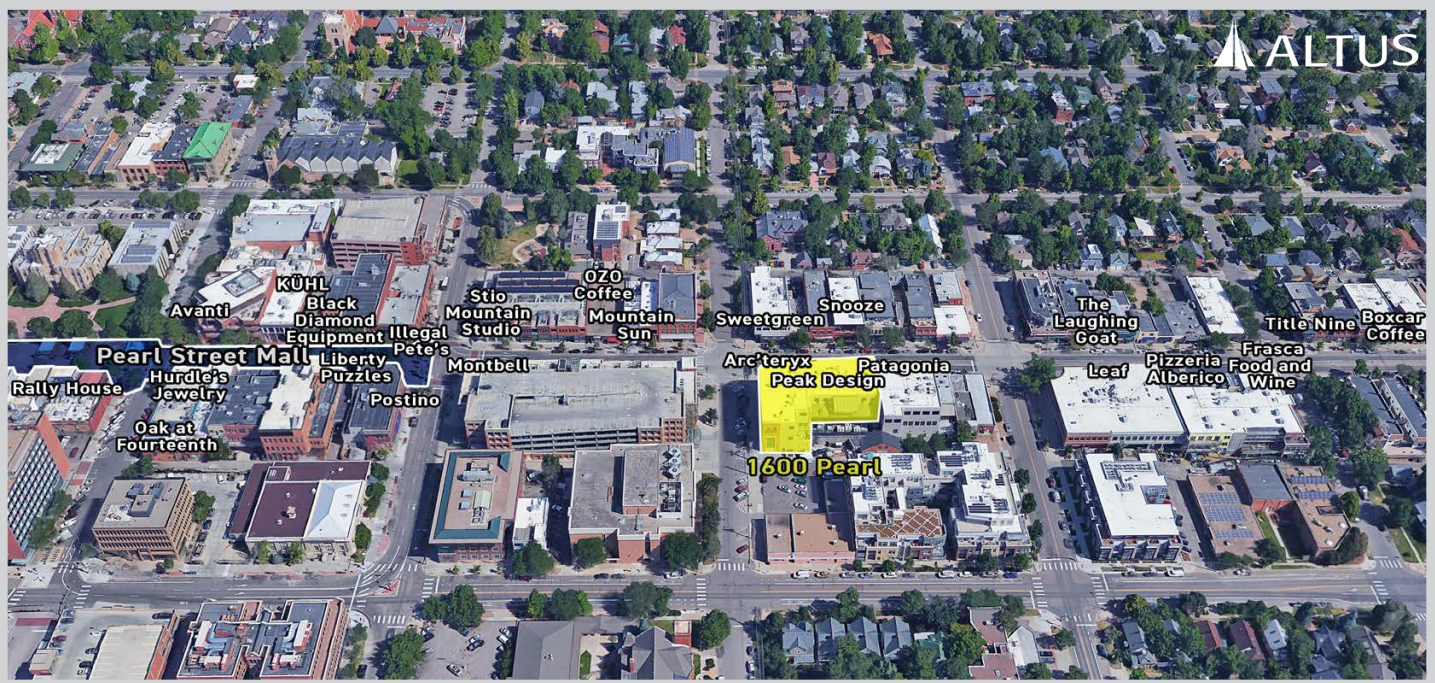




AVANTI



BLACK DIAMOND



SNOOZE



POSTINO