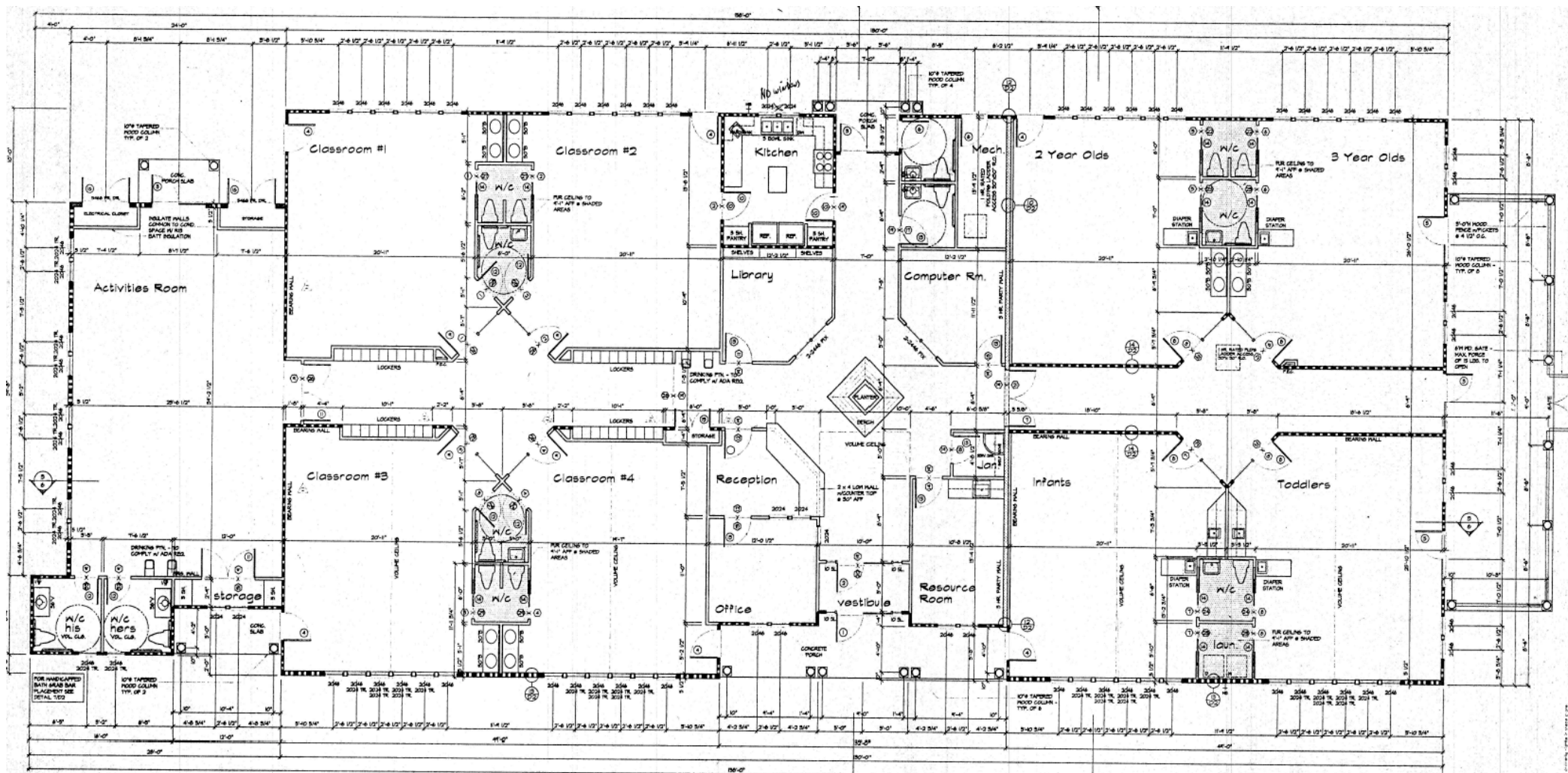


Floor Plan

8,744 square feet



R. L. Travers & Associates, Inc.

Post Office Box 686
 Springfield, Virginia 22150
 P: 703.339.0100
 F: 703.550.8815
www.rltinc.net

For more information, please
 contact:
 Guy Travers, Principal Broker
 703.339.0100
gtravers@rltinc.net

Disclaimer: We have in preparing this information, used our best endeavors to ensure that the information contained herein is true and accurate, and deemed to be a reliable reflection of market values or has been secured from sources we believe to be reliable, but we make no representation, guarantee or warranties, expressed or implied, as to the accuracy of the information complete, or reliable, current or error-free and assume no responsibility for any errors or omissions contained therein. All references to age, square footage, income, and expenses are approximate. This is not a survey, any pictures, images, or drawings are only for illustrative purposes. Any party should conduct their own independent investigations and rely solely on those results. *This is not intended as a listing solicitation for a property currently listed with another broker.*