

# AVAILABLE FOR LEASE

2280 WHITE OAK CIR, AURORA, IL 60502



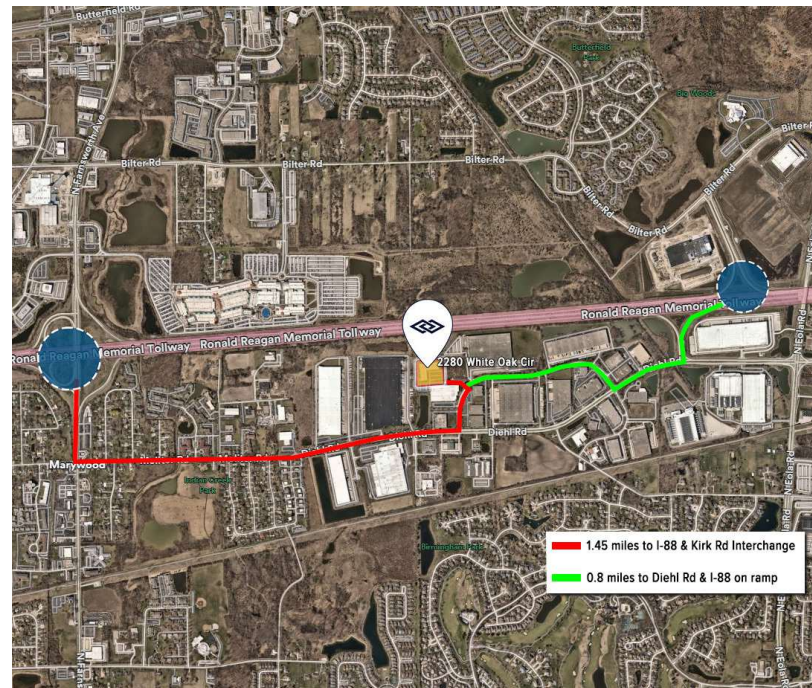
## PROPERTY DESCRIPTION

Available October 2025

SPACES	LEASE RATE	SPACE SIZE
Unit 1	Subject to Offer	7,469 SF
Unit 2	Subject to Offer	5,948 SF

## PROPERTY SPECIFICATIONS

Ceiling Height	19'
Loading	(1) 14' x 14' Drive-in door (expandable)
Car Parking	45 Surface parking spots (expandable)
HVAC	Fully air-conditioned Warehouse

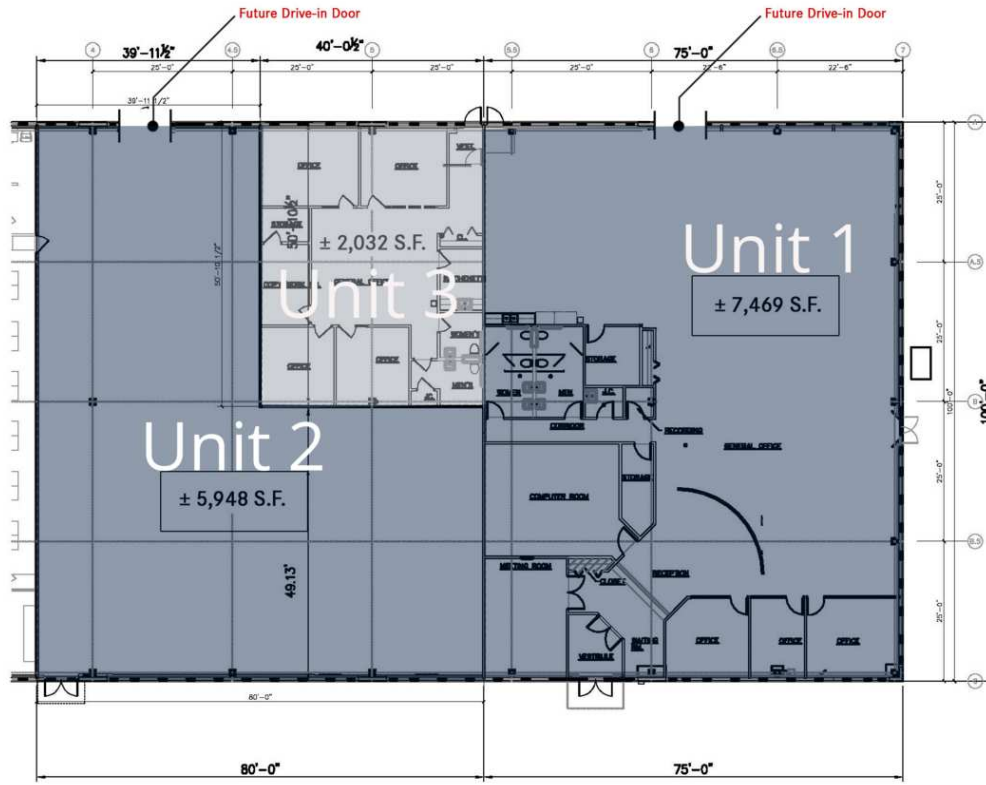


**CHRIS MERGENTHALER** | Vice President | 630.993.3862 | [cmergenthaler@darwinpw.com](mailto:cmergenthaler@darwinpw.com)  
**TOMMY ENGEL** | Associate | 630.993.3863 | [tengel@darwinpw.com](mailto:tengel@darwinpw.com)  
**LUKE FERZACCA** | Associate | 630.993.3883 | [lferzacca@darwinpw.com](mailto:lferzacca@darwinpw.com)



# AVAILABLE FOR LEASE

2280 WHITE OAK CIR, AURORA, IL 60502



## AVAILABLE SPACES

SUITE	TENANT	SIZE	TYPE	RATE	DESCRIPTION
Unit 1	Available	7,469 SF	Modified Gross	Subject to Offer	3,000 SF Office
Unit 2	Available	5,948 SF	Modified Gross	Subject to Offer	Available for expansion or dead storage

**CHRIS MERGENTHALER** | Vice President | 630.993.3862 | [cmergenthaler@darwinpw.com](mailto:cmergenthaler@darwinpw.com)  
**TOMMY ENGEL** | Associate | 630.993.3863 | [tengel@darwinpw.com](mailto:tengel@darwinpw.com)  
**LUKE FERZACCA** | Associate | 630.993.3883 | [lferzacca@darwinpw.com](mailto:lferzacca@darwinpw.com)