

WORK•LIFE

Welcome to Fitzrovia

A workspace that will make
you, and your team, love
coming to work.

Certified
B
Corporation



📍 33 Foley Street, London W1W 7TL



You've got loads of choice, so why Work.Life?

Our mission is to make your work-life happier. Studies show that happier teams are 17% more productive, and engaged employees boost profitability by 23%¹. Win win!

When you take an office with us, you're not just signing a lease. You're joining a community where 92% of our members say they're happier since they joined us.

70

NPS Score

Net Promoter Score is a metric used in customer experience programmes reported with a number from -100 to +100. A score above 50 is considered excellent.

p.s. WeWork's NPS score is 6



4.7

Average Google Review rating from over 500 reviews



3000

member connections made last year



B Corp

We've been a proud B Corp since 2022



¹ Gallup: What Is Employee Engagement and How Do You Improve It?

But that's not all...



PERSONAL SERVICE

Our dedicated membership team not only know your name, but they'll tell everyone they know too. We're your number one fan, we always sweat the small stuff so you don't have to, and solve any issues quickly and efficiently with IT and facilities support at your fingertips.



A REAL COMMUNITY

You won't find any cold, unfriendly offices here with hit & miss staff like other workspaces; our spaces have a proper sense of community where everyone knows each other. We go out of our way to connect you with other members, maybe you're looking for a freelancer for a project, or a new tennis buddy! We connected over 3000 of our members last year.

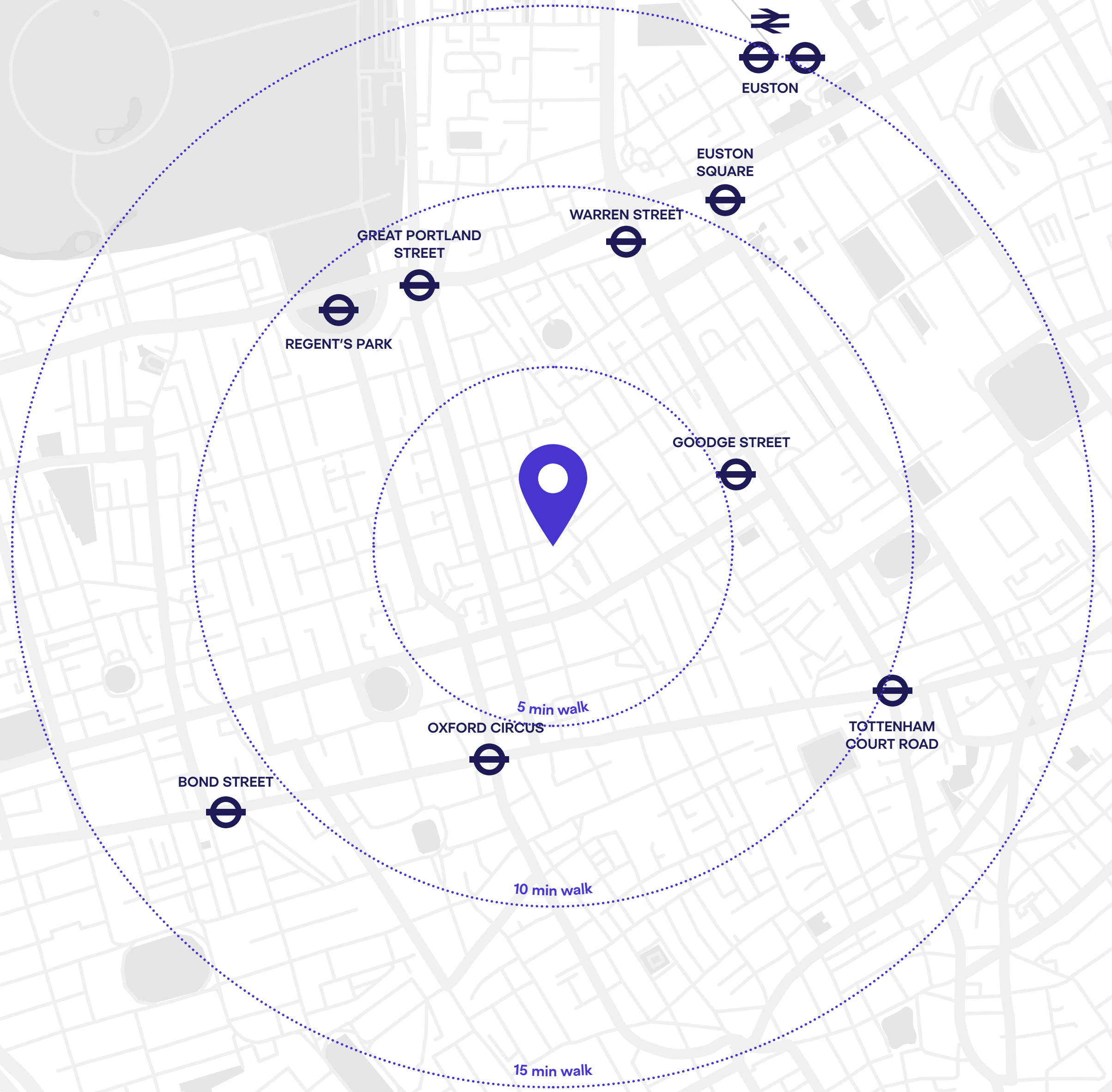


WORKSPACES THAT... WORK

We ensure your workday is effortless from the moment you arrive. Our team warmly welcomes you, without any clunky reception. Enjoy unlimited complimentary tea and Redemption Roasters coffee, seamless setup on our super-fast Wifi, and well-equipped meeting rooms so you can plug, play, and get on with your day!

Find us on leafy Foley Street

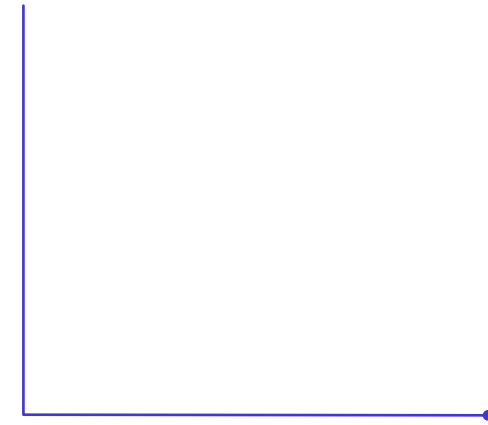
📍 33 Foley Street, London W1W 7TL



A place to grow

We specialise in providing teams of 1–40 with their Work.Home. Many of these teams have not only grown with us, but have also won new business opportunities, found specialised support, and successfully collaborated on countless projects.

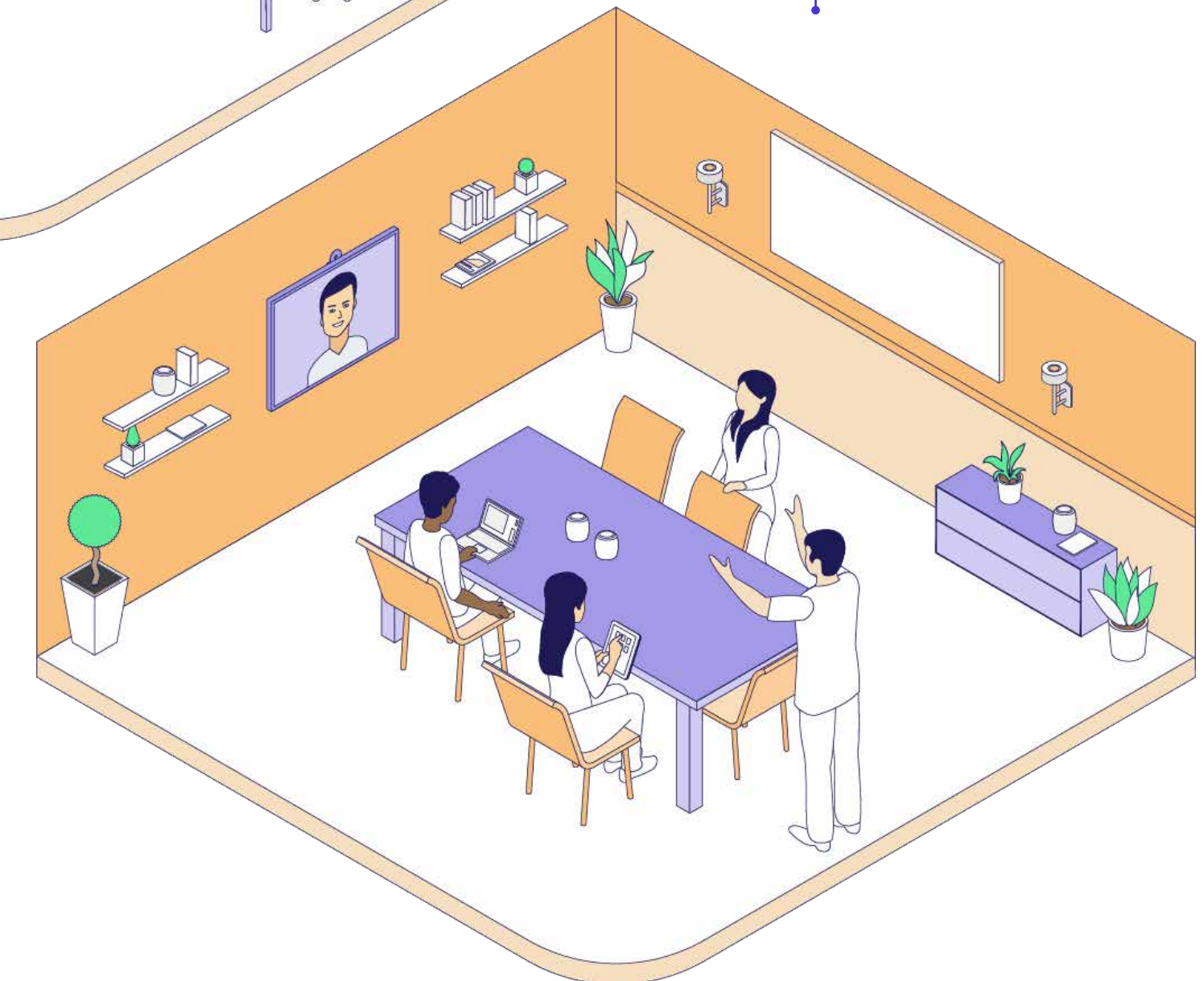
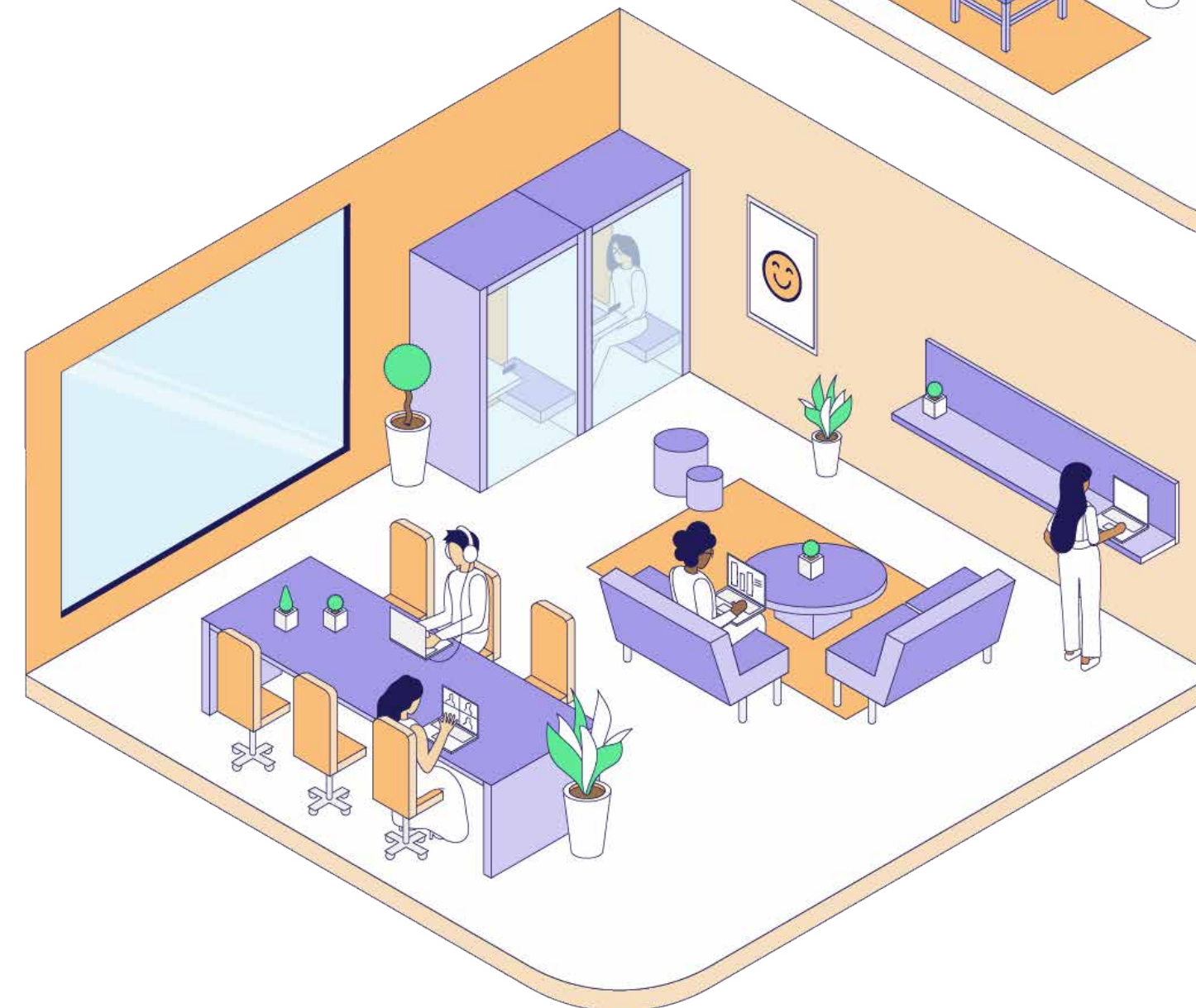
PRIVATE OFFICES



MEETING ROOMS



COWORKING



Private offices



Bright

Modern

Furnished

Customisable

Flexible

Lockable

Coworking

"In the universe, there are things that are known, and things that are unknown, and in between, there are doors."

William Blake
28 Broad Street

"Any place you love is the world to you"

Oscar Wilde
Socialite

Energising

Accessible

Flexible

Collaborative

Community-focussed

Meeting rooms

FREE
meeting room
credits with every
private office!*

"It's only when we are no longer
fearful that we begin to create"
J.M.W. Turner
64 Harley Street

* Private office memberships receive monthly credits worth £100 per desk to use at any location (up to a maximum of £1200), plus a 50% discount on further meeting room bookings.

Energising

Seamless

Well-equipped

Inspiring

Convenient

Our memberships

Private offices

Private offices

Fully furnished, move-in ready space for your team with shared amenities and 24/7 access.

SIZE

2–40 desks

FURNISHINGS

Full customisation available

BRANDING

Customisation options available

MEETING ROOMS

* Monthly credits worth £100 per desk to use at any location (up to a maximum of £1200), plus a 50% discount on further meeting room bookings

FACILITIES

Shared kitchen, plus a tea point on every floor

PRINTING

Included (with fair usage policy)

ACCESS

24/7

MINIMUM COMMITMENT

3 months (option to change office mid-contract)

BUSINESS RATES

Included

CLEANING

Daily

PAYMENT

Monthly

FREE

meeting room
credits with every
private office!*

FROM £750 PER DESK PER MONTH

Our memberships

Coworking

Coworking

With both our pay-as-you-go and monthly memberships, you'll get access to *all* of our locations with everything you need, including:

- hot desks, breakout spaces, phone booths, meeting rooms
- seriously fast Wifi
- unlimited tea and coffee
- community portal
- weekly events
- local discounts

25%
off meeting
rooms

FLEX (PAY-AS-YOU-GO)

- One-off £25 sign up fee
- Pay hourly with a daily cap £50
- £20 minimum spend per month
- 8:30am–8:30pm daily access
- Available to add: mail handling, registered business address, printing
- 25% discount on meeting rooms

Best value for up to 2 days per week usage

£8 + VAT PER HOUR

UNLIMITED (PAY MONTHLY)

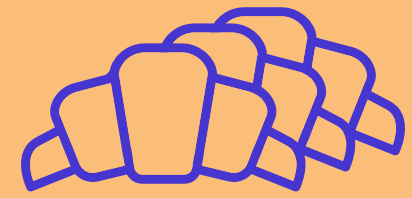
- No sign up fee
- Pay monthly
- Unlimited usage
- 24/7 access
- Includes mail handling, registered business address, printing
- 50% discount on meeting rooms

Best value for 2+ days per week usage

£350 + VAT PER MONTH

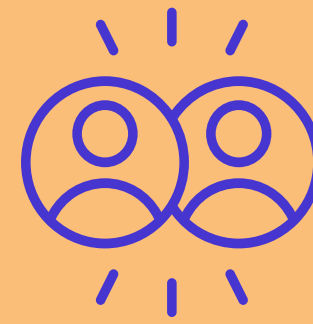
50%
off meeting
rooms

A Work.Life week



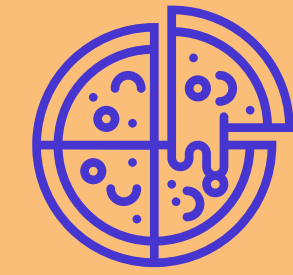
MONDAY BREAKFAST

A special brekkie to
kick off the week



WELLNESS WEDNESDAYS

A midweek pick-me-up,
like healthy spreads
or crafting



BEER & PIZZA THURSDAYS

The perfect wind down with
your fellow members

Throughout the
rest of the week
you can expect...



free breakfast,
tea and coffee
everyday



discounts at our
favourite local
lunch spots



a range of organised
activities like yoga
and football



thoughtful and
relaxed networking
events

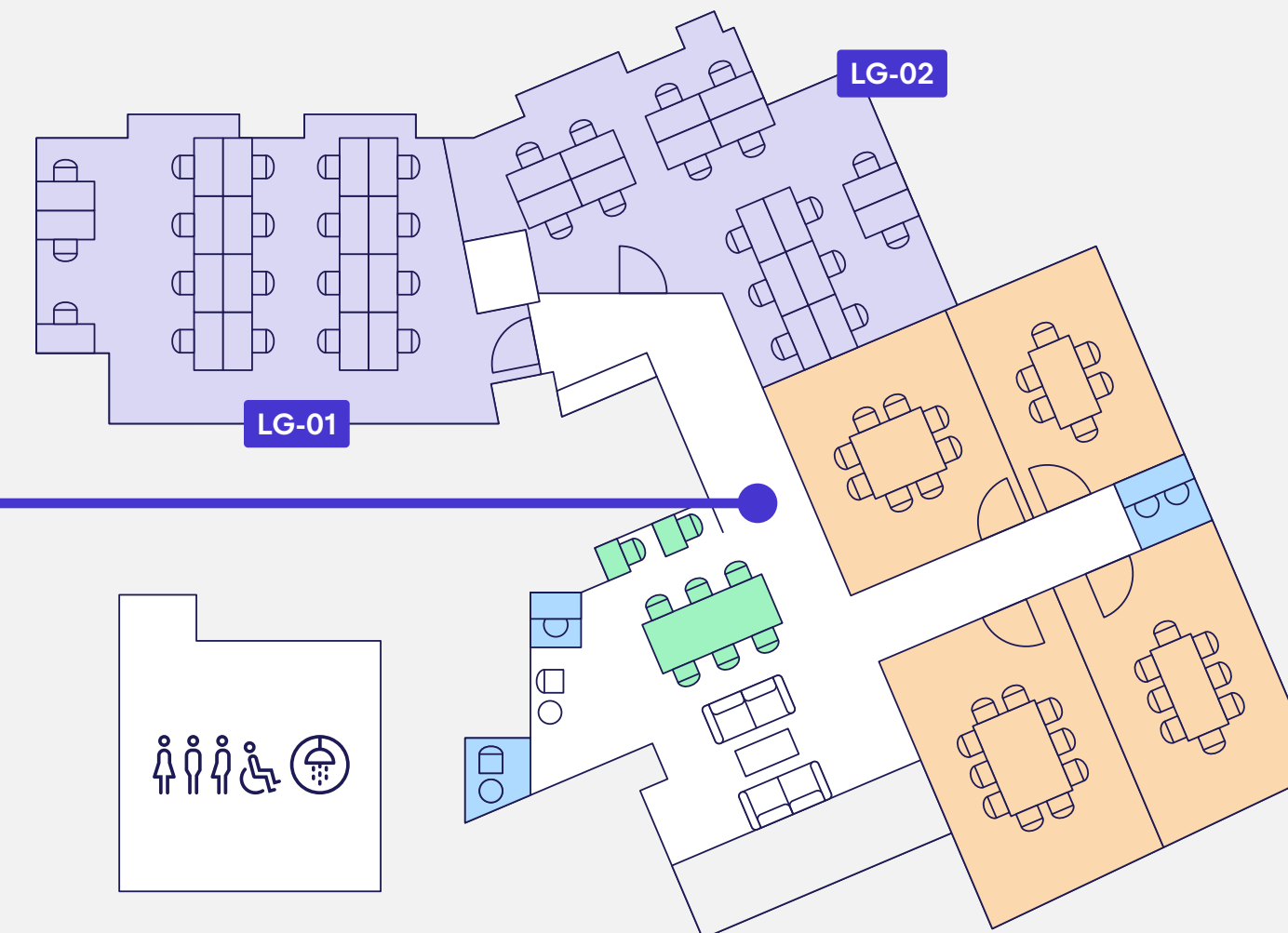
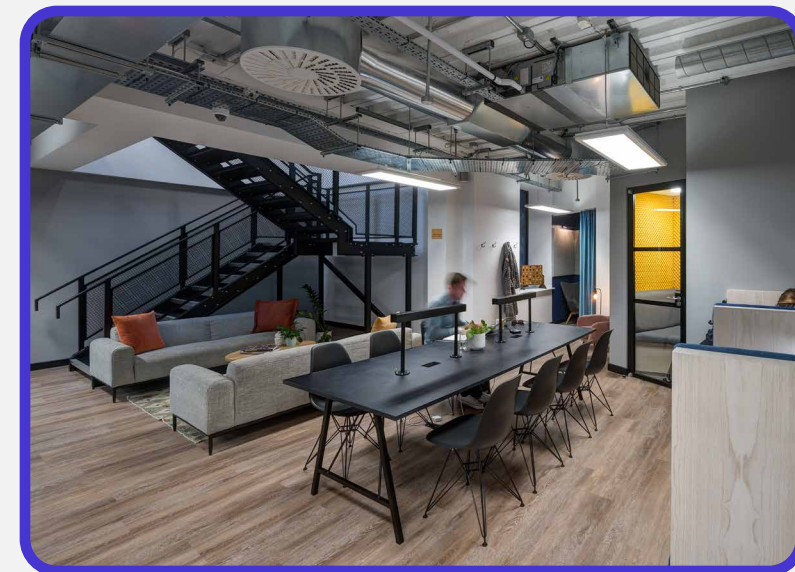


and plenty of other
community-focused
fun!

Floorplans

LOWER GROUND FLOOR

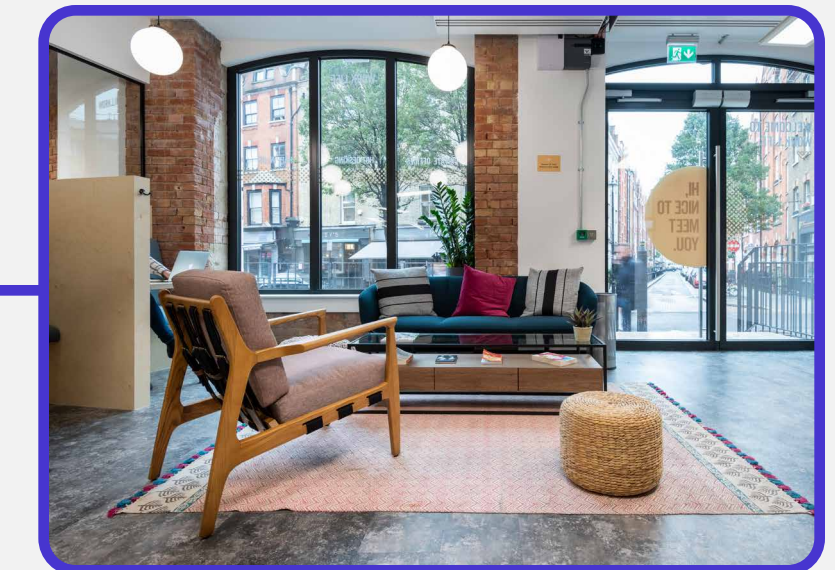
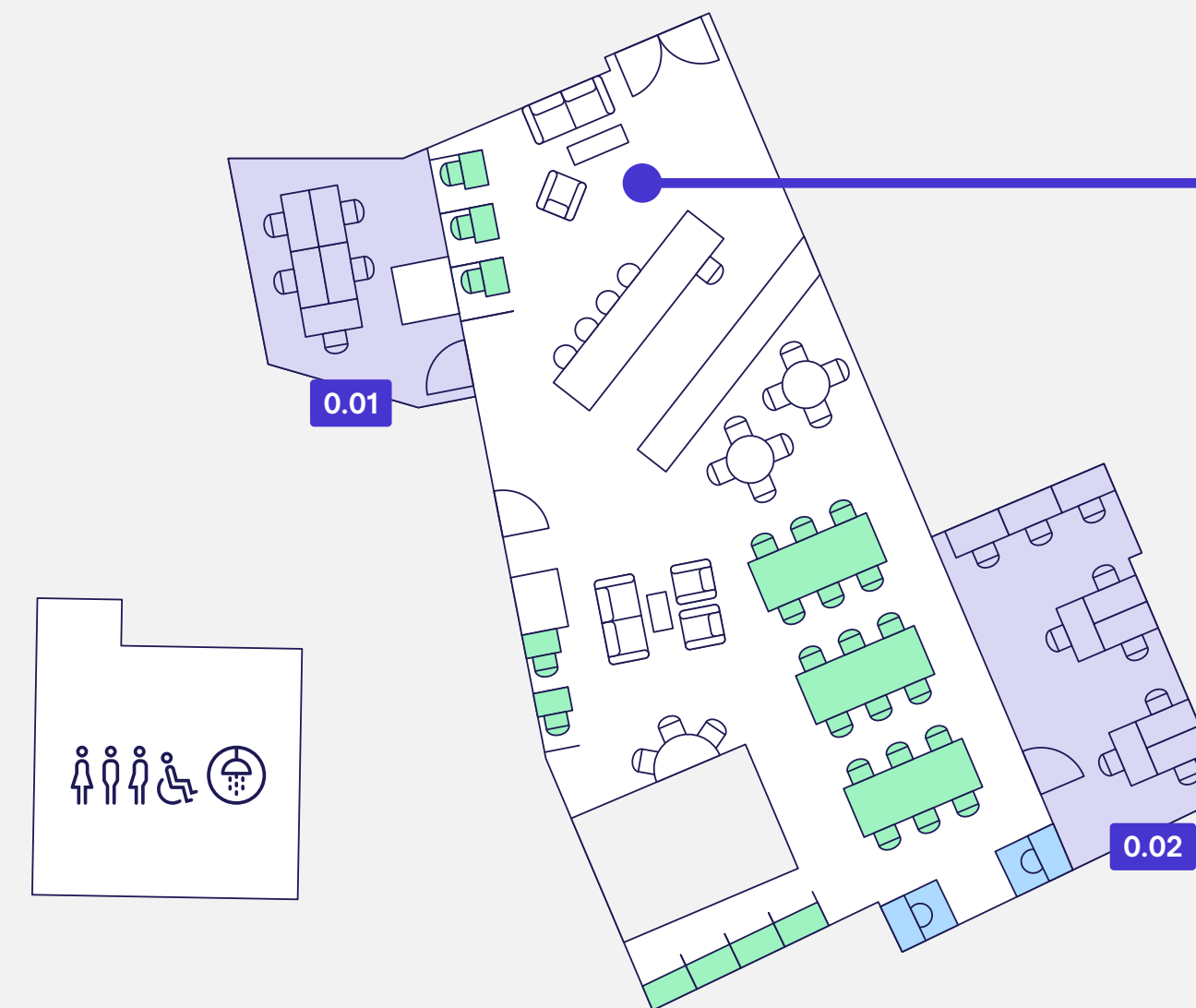
- 2 private offices
- 4 meeting rooms
- 2 phone booths
- 1 Relax booth
- Breakout space
- Lockers
- Toilets
- Showers



Floorplans

GROUND FLOOR

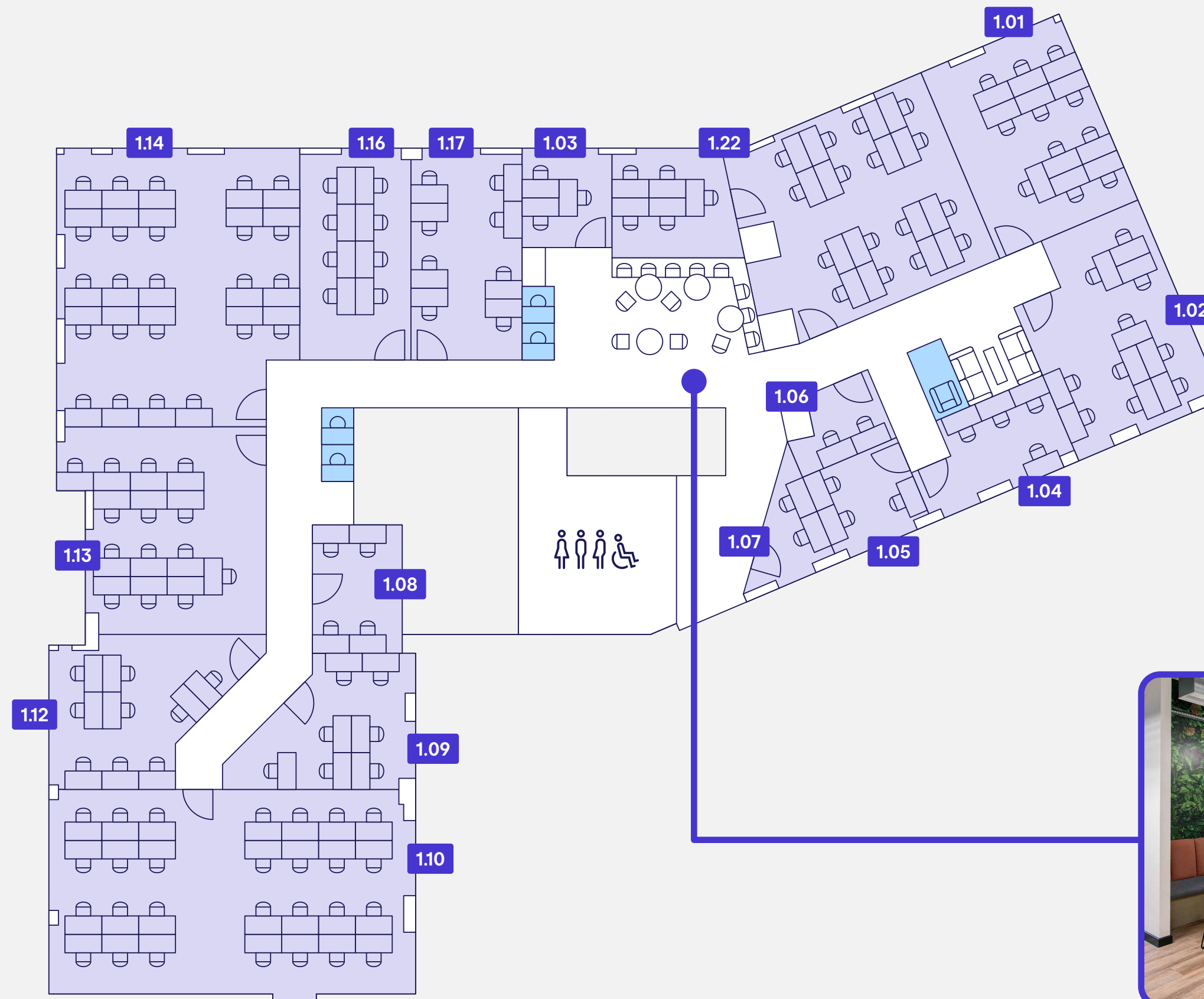
- Staffed reception
- Coworking space
- Standing desks
- Fully stocked kitchen
- 2 private offices
- 2 phone booths
- Breakout space
- Printer
- Toilets
- Showers



Floorplans

FIRST FLOOR

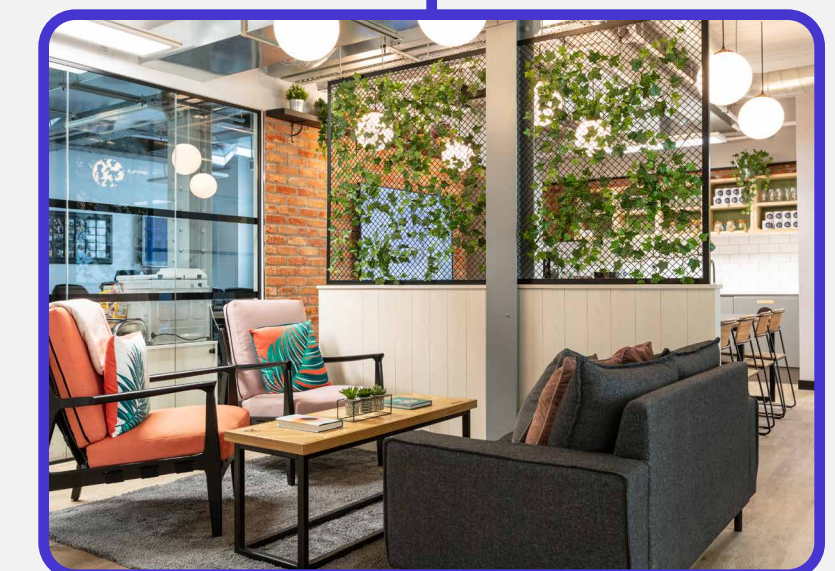
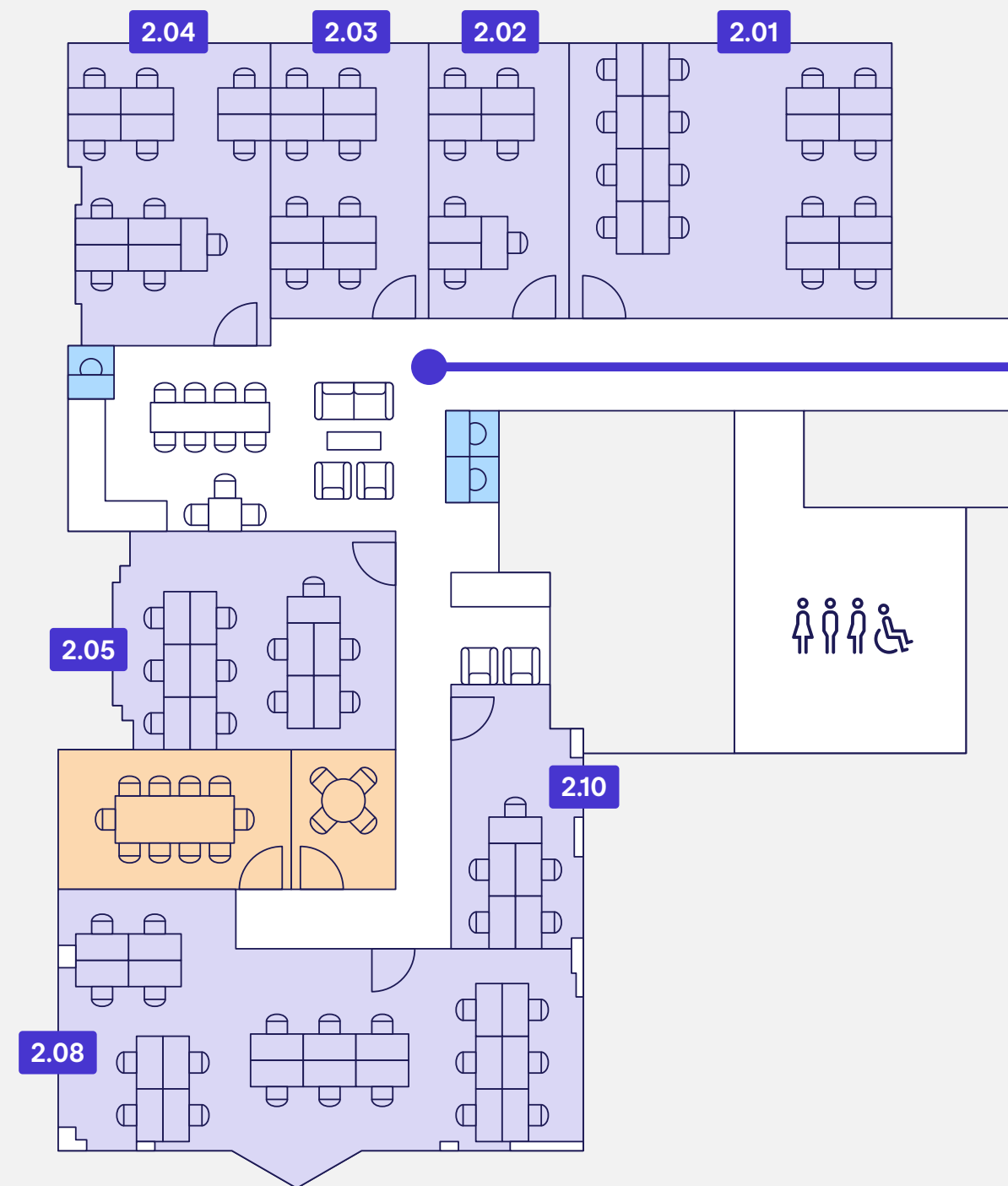
- 16 private offices
- 4 phone booths
- 1 Relax booth
- Breakout space
- Teapoint
- Toilets



Floorplans

SECOND FLOOR

- 7 private offices
- 2 meeting rooms
- 3 phone booths
- Breakout space
- Teapoint
- Toilets



WORK•LIFE

GET IN TOUCH



33 Foley Street, London W1W 7TL



membership@work.life



020 3967 8795

