

7575 E REDFIELD ROAD | SCOTTSDALE, AZ 85260
OFFICE SPACE FOR LEASE



Chad Kirkorsky, SIOR

Partner
480.330.2824
chad@citywidecre.com

Jahnay Finklea

Sales & Leasing
602.487.7291
jahnay@citywidecre.com

1645 East Missouri Avenue, Suite 225 | Phoenix, Arizona 85016 | 602.313.1000 • citywidecre.com



All information furnished is from sources deemed reliable. No representation is made as to the accuracy thereof and it is submitted subject to errors, omissions, changes, or withdrawal without notice and to any special listings conditions, including the rate and manner of payment of commissions for particular offerings imposed by principals or agreed to by the company, the terms of which are available to interested principals or brokers. All dimensions are approximate. Owner and/or Broker make no representations expressed or implied as to the accuracy of floor plan/site plan dimensions.

PROPERTY DETAILS

2,523 Square Feet, Suite 213

\$20 Per Square Foot, Full Service

Located on 2nd Floor

Elevators in Building

Five (5) Offices, Three (3) Conference/Training Rooms

Reception, Kitchenette/Break Room

Common Area Restrooms

Exterior Signage

Easy Access to Loop 101

Five Minutes from Kierland Commons Plaza

Chad Kirkorsky, SIOR

Partner
480.330.2824
chad@citywidecre.com

Jahnay Finklea

Sales & Leasing
602.487.7291
jahnay@citywidecre.com

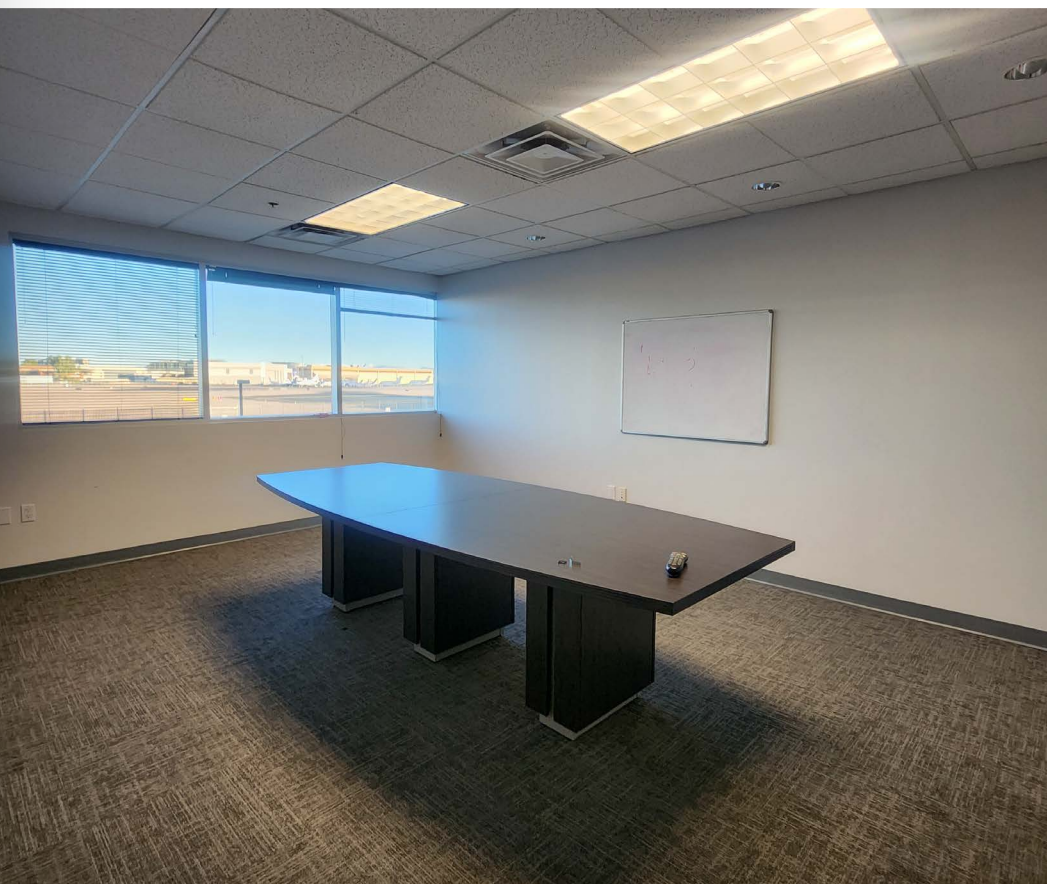


[CLICK TO VIEW
VIRTUAL TOUR!](#)

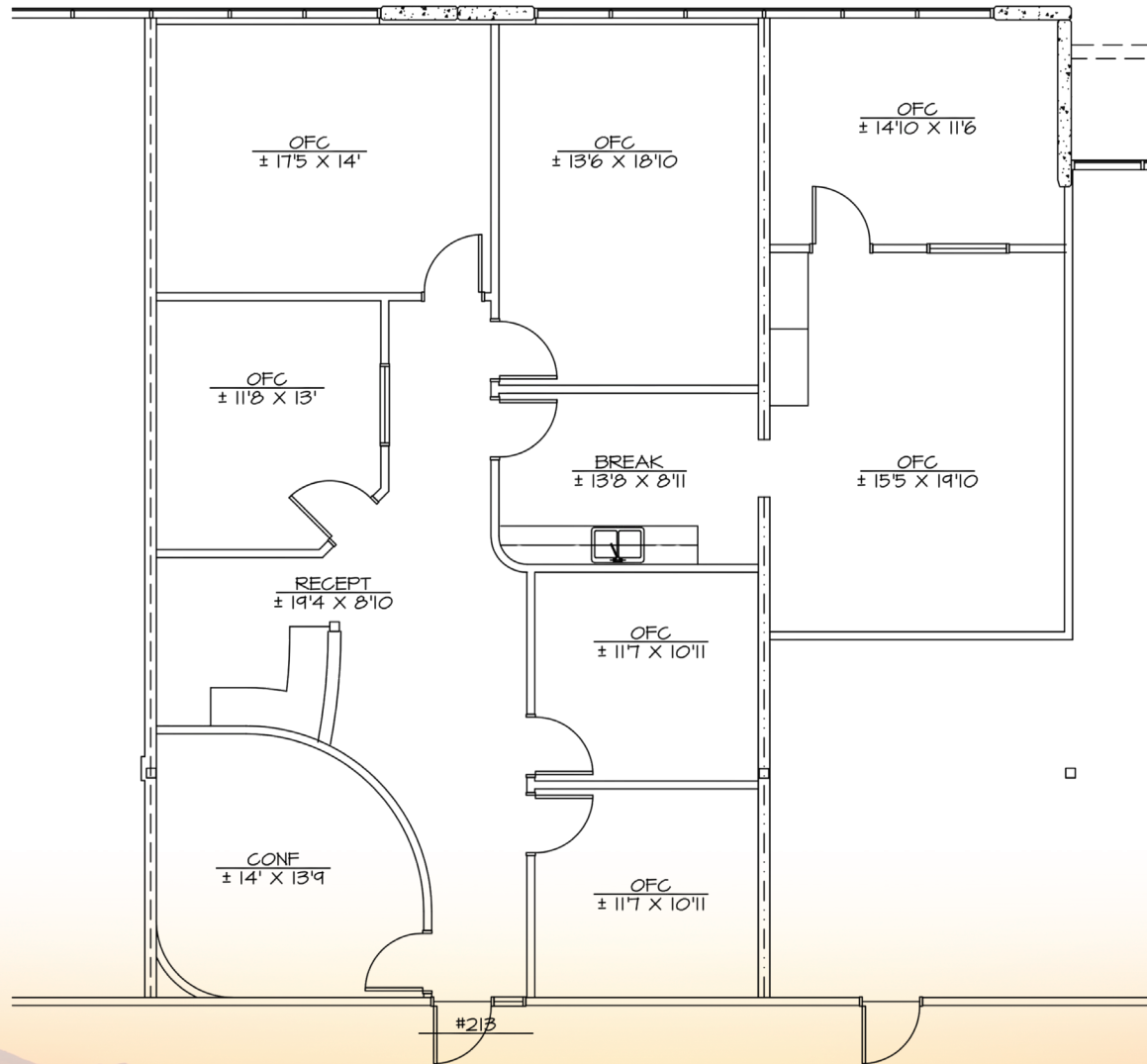


1645 E Missouri Avenue, Suite 230
Phoenix, Arizona 85016
602.313.1000 • citywidecre.com

• INVESTMENT • MANAGEMENT • OFFICE • INDUSTRIAL
INDUSTRIAL • RETAIL • LAND • DEVELOPMENT • INVESTME



FLOOR PLAN



Chad Kirkorsky, SIOR

Partner
480.330.2824
chad@citywidecre.com

Jahnay Finklea

Sales & Leasing
602.487.7291
jahnay@citywidecre.com

2026 DEMOGRAPHICS

	1 mile	3 mile	5 mile
Population	5,099	85,349	213,050
Households	2,200	38,987	95,000
Average Household Income	\$163,366	\$140,893	\$146,513
Average Daytime Employment	19,260	86,193	161,527
Median Age	45.7	45	45.9



Chad Kirkorsky, SIOR

Partner
480.330.2824
chad@citywidecre.com

Jahnay Finklea

Sales & Leasing
602.487.7291
jahnay@citywidecre.com