



CLASS A OFFICE SPACE FOR LEASE

6055 LAKESIDE COMMONS DRIVE, SUITE 440
MACON, GA 31210 BIBB COUNTY

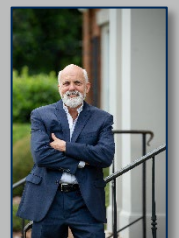


LEASE RATE: \$21.00/SF, FULL SERVICE | ±1,896 SF



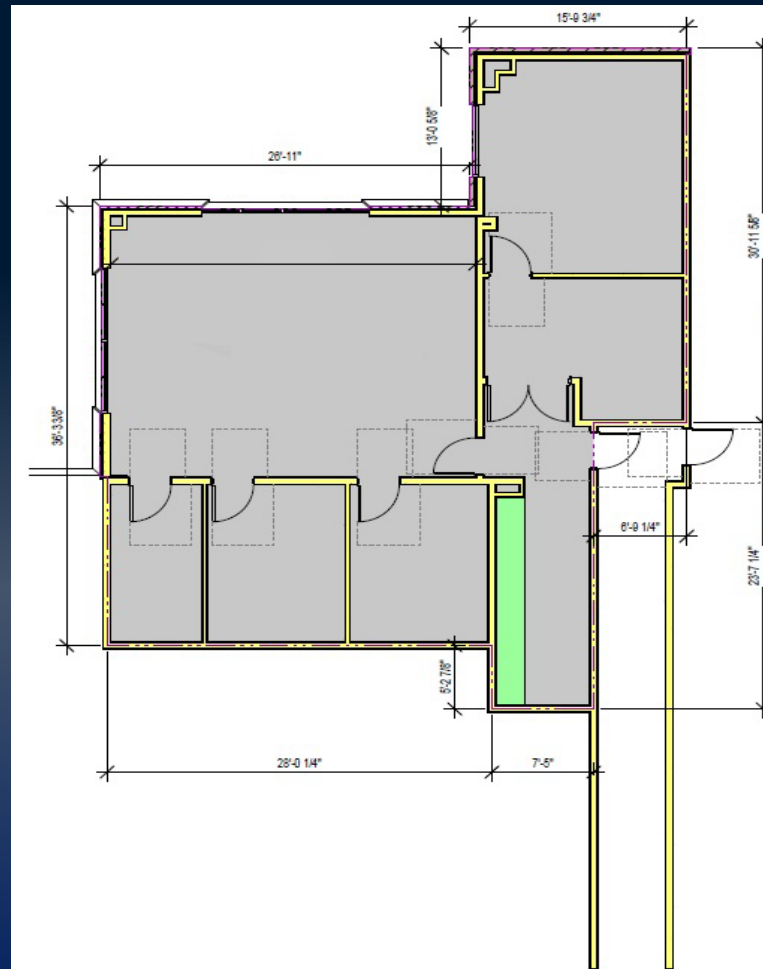
ADAM BAILEY C: 478.733.7961 | STERLING BAILEY C: 478.951.9443
ABAILEY@THESUMMITGROUPMACON.COM | SBAILEY@THESUMMITGROUPMACON.COM
4124 ARKWRIGHT ROAD, SUITE 1, MACON, GA 31210
O: 478.750.7507

WWW.THESUMMITGROUPMACON.COM



PROPERTY INFORMATION

- ±1,896 SF office space
- Features a lobby, three (3) private offices, a bullpen area, reception area, and storage/IT closet
- Ample on-site parking for employees and visitors
- Professional corporate environment surrounded by established businesses and office users
- Strong daily traffic counts provide excellent accessibility and visibility in a growing commercial corridor
- Located near retail, restaurants, hotels, and everyday conveniences along the Bass Road corridor



6055 LAKESIDE COMMONS DRIVE
SUITE 440
MACON, GA 31210
BIBB COUNTY



PROPERTY INFORMATION

- Current tenants include:
 - Morgan Stanley
 - Securian
 - KaMin
 - McArthur Law Firm
 - Dellacona Law Firm
 - Active Minerals
 - Department of Revenue
 - Lifestance
 - Pearson Vue
 - SCP Eyecare



6055 LAKESIDE COMMONS DRIVE
SUITE 440
MACON, GA 31210
BIBB COUNTY



AERIAL MAP



6055 LAKESIDE COMMONS DRIVE
SUITE 440
MACON, GA 31210
BIBB COUNTY



EXTERIOR PHOTO



The information contained herein has been compiled from various sources, both private and public. It is accurate and complete only to the extent to which The Summit Group has been able to ascertain from third party sources. As such, no warranty or guarantee is given or implied with regard to the accuracy or completeness of any information contained herein. Any interested party shall be required to conduct its own due diligence and investigations to verify, review, audit, or otherwise insure the information contained herein.

