

RETAIL FOR LEASE

3725 & 3745 BANKS ROAD

RALEIGH, NC 27603



NAI TRI PROPERTIES

SITE FEATURES - NORTH BUILDING

ADDRESS: Banks Road Business Park - North Bldg
3725 Banks Road
Raleigh, NC 27603

RENTAL RATE: Call broker for pricing

BUILDING SIZE: 12,000 SF

PARKING: 4/1,000 SF

AVAILABLE SPACE: 2,000 RSF Minimum - 12,000 RSF Maximum

FEATURES: Free standing Building
12,000 SF Bay or 6 - 2,000 SF Bays

ZONING: GC-CZD (General Commercial Conditional Zoning District)

DELIVERY: July 2026



CONTACT

HUNT WYCHE | 919.740.4406 | hwyche@triprop.com

All information provided herein is from sources deemed reliable. However, all information is subject to verification. NAI Tri Properties does not independently verify nor warrant the accuracy of the information.



SITE FEATURES - SOUTH BUILDING

ADDRESS: Banks Road Business Park - South Bldg
3745 Banks Road
Raleigh, NC 27603

RENTAL RATE: Call broker for pricing

BUILDING SIZE: 12,000 SF

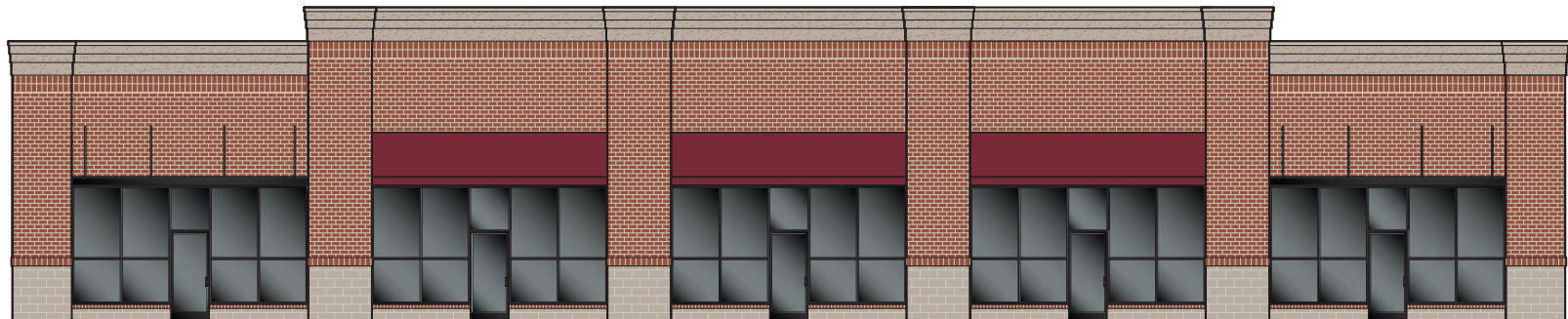
PARKING: 4/1,000 SF

AVAILABLE SPACE: 2,400 RSF Minimum - 7,200 RSF Maximum

FEATURES: Free standing Building
12,000 SF Bay or 5 - 2,400 SF Bays

ZONING: GC-CZD (General Commercial Conditional Zoning District)

DELIVERY: July 2026



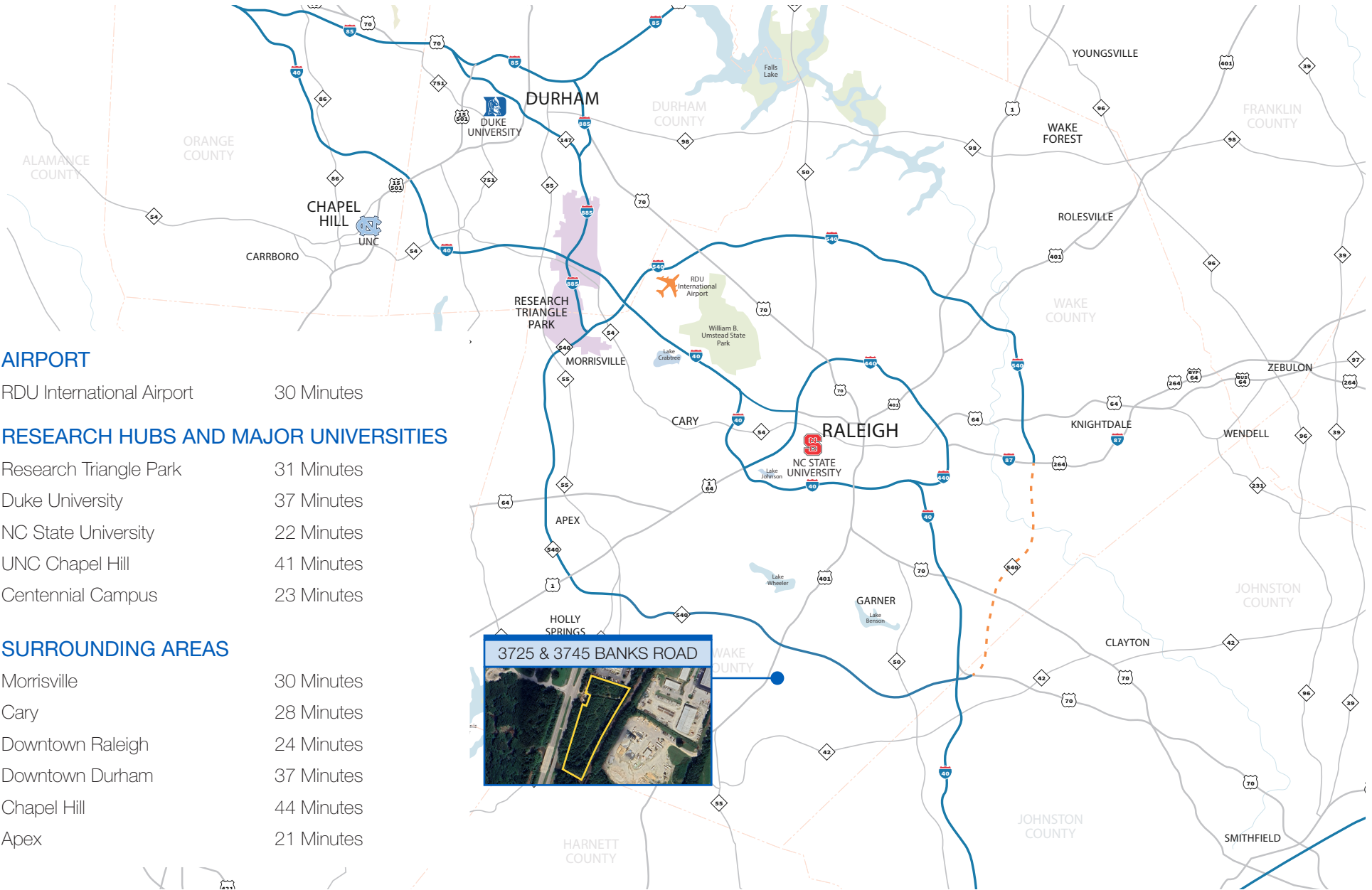
CONTACT

HUNT WYCHE | 919.740.4406 | hwyche@triprop.com

All information provided herein is from sources deemed reliable. However, all information is subject to verification. NAI Tri Properties does not independently verify nor warrant the accuracy of the information.



TRIANGLE REGION



AIRPORT

RDU International Airport 30 Minutes

RESEARCH HUBS AND MAJOR UNIVERSITIES

Research Triangle Park 31 Minutes
 Duke University 37 Minutes
 NC State University 22 Minutes
 UNC Chapel Hill 41 Minutes
 Centennial Campus 23 Minutes

SURROUNDING AREAS

Morrisville 30 Minutes
 Cary 28 Minutes
 Downtown Raleigh 24 Minutes
 Downtown Durham 37 Minutes
 Chapel Hill 44 Minutes
 Apex 21 Minutes

CONTACT

HUNT WYCHE | 919.740.4406 | hwyche@triprop.com

All information provided herein is from sources deemed reliable. However, all information is subject to verification. NAI Tri Properties does not independently verify nor warrant the accuracy of the information.



LOCATION + ACCESS

MAJOR HIGHWAYS

US-401	Frontage
NC-42	3.7 Miles
I-540	2.2 Miles
I-40	11.4 Miles
NC-50	9.3 Miles

SURROUNDING AREAS

Cary	15.8 Miles
Apex	13.1 Miles
Fuquay-Varina	6.3 Miles
Garner	11.5 Miles
Raleigh	13.4 Miles

3725 & 3745 BANKS ROAD



CONTACT

HUNT WYCHE | 919.740.4406 | hwyche@triprop.com

All information provided herein is from sources deemed reliable. However, all information is subject to verification. NAI Tri Properties does not independently verify nor warrant the accuracy of the information.

AERIAL

KING'S GRANT COMMONS - 3 MILES

BANKS ROAD PARK

401

401

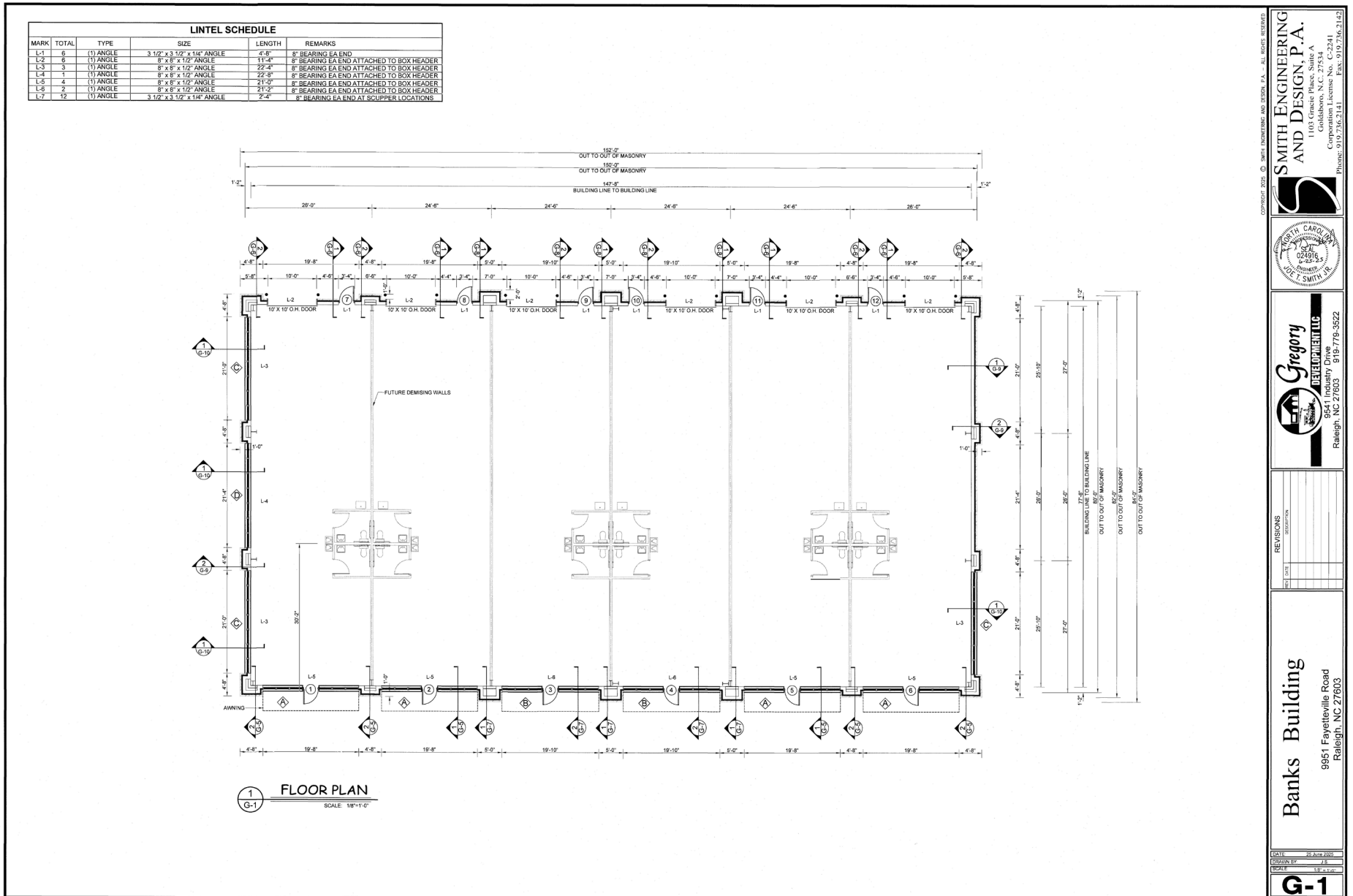
CONTACT

HUNT WYCHE | 919.740.4406 | hwyche@triprop.com

All information provided herein is from sources deemed reliable. However, all information is subject to verification. NAI Tri Properties does not independently verify nor warrant the accuracy of the information.



FLOOR PLAN - NORTH BUILDING



COPYRIGHT 2021 © SMITH ENGINEERING AND DESIGN, P.A. - ALL RIGHTS RESERVED.

SMITH ENGINEERING AND DESIGN, P.A.
 1100 Lenoire Place, Suite 2750-A
 Raleigh, NC 27603
 Corporation License No. C-2241
 Phone: 919.736.2141 Fax: 919.736.2142

NORTH CAROLINA
 PROFESSIONAL ENGINEER
 224516
 SMITH, P.A.

Gregory DEVELOPMENTAL
 9541 Industry Drive
 Raleigh, NC 27603 919-779-3522

REVISIONS
 NO. DATE
 1
 2
 3

Banks Building
 9951 Fayetteville Road
 Raleigh, NC 27603

DATE: 22 June 2021
 DESIGNED BY: J.S.
 DRAWN BY: J.S.
G-1

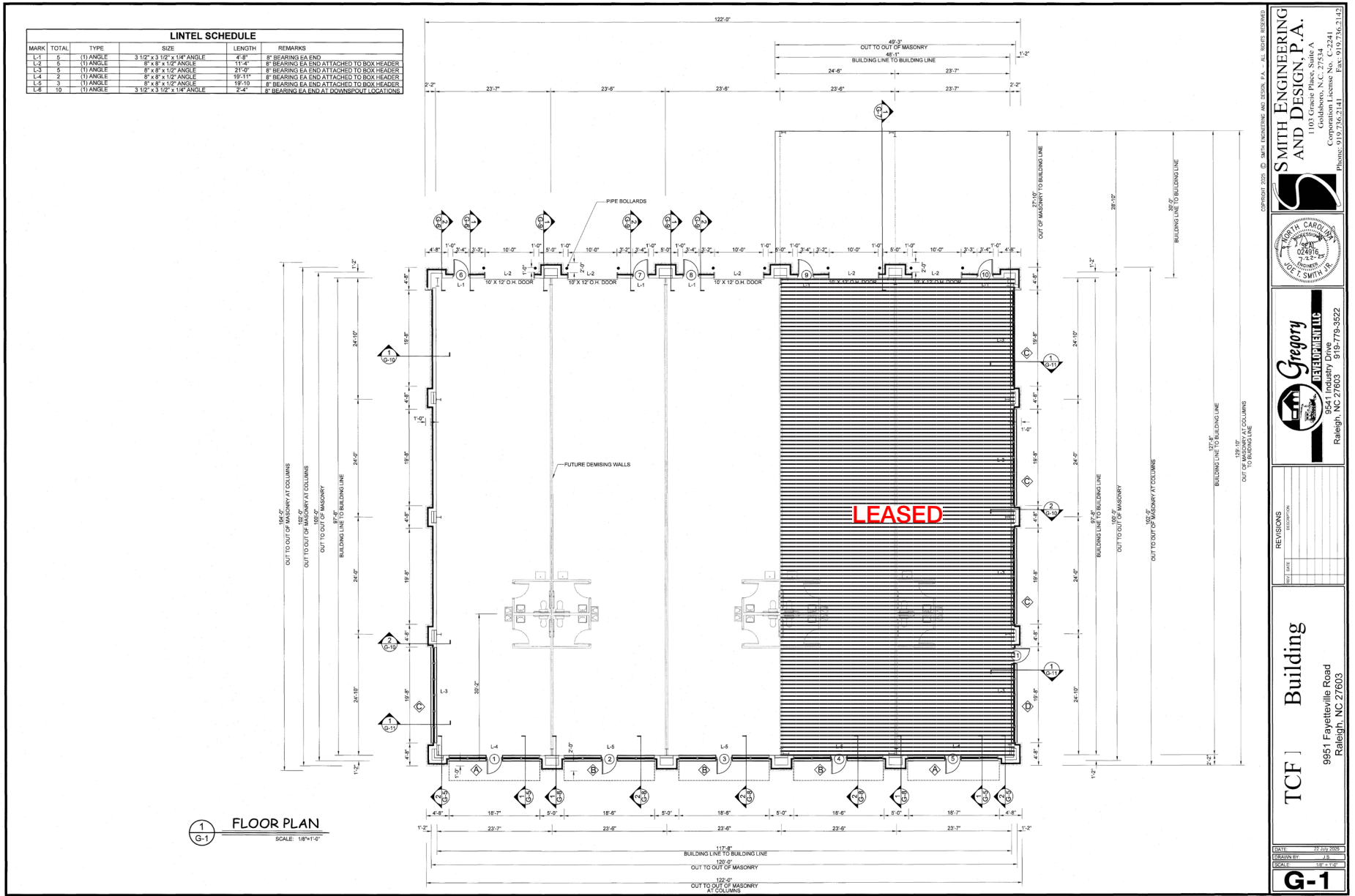
CONTACT

HUNT WYCHE | 919.740.4406 | hwyche@triprop.com

All information provided herein is from sources deemed reliable. However, all information is subject to verification. NAI Tri Properties does not independently verify nor warrant the accuracy of the information.



FLOOR PLAN - SOUTH BUILDING



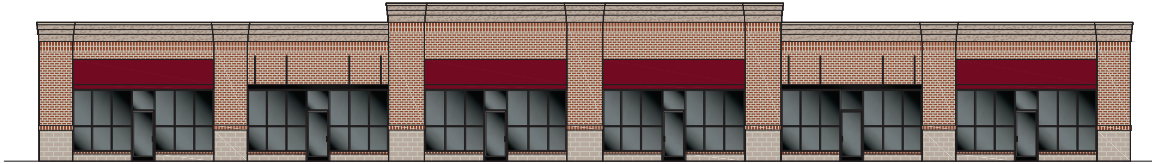
CONTACT

HUNT WYCHE | 919.740.4406 | hwyche@triprop.com

All information provided herein is from sources deemed reliable. However, all information is subject to verification. NAI Tri Properties does not independently verify nor warrant the accuracy of the information.

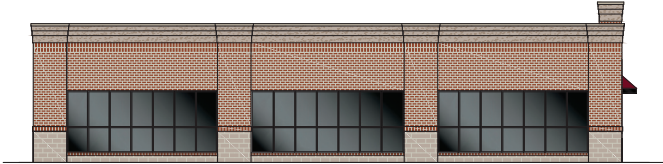


NORTH BUILDING ELEVATIONS



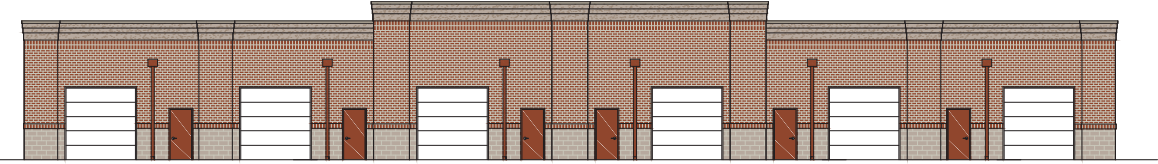
SOUTH ELEVATION

SCALE: 1/8" = 1'-0"



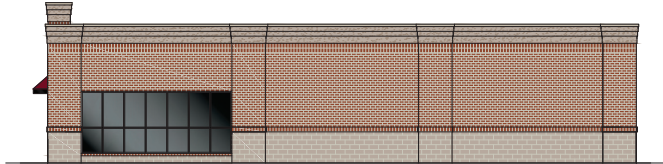
WEST ELEVATION

SCALE: 1/8" = 1'-0"



NORTH ELEVATION

SCALE: 1/8" = 1'-0"



EAST ELEVATION

SCALE: 1/8" = 1'-0"

CONTACT

HUNT WYCHE | 919.740.4406 | hwyche@triprop.com

All information provided herein is from sources deemed reliable. However, all information is subject to verification. NAI Tri Properties does not independently verify nor warrant the accuracy of the information.

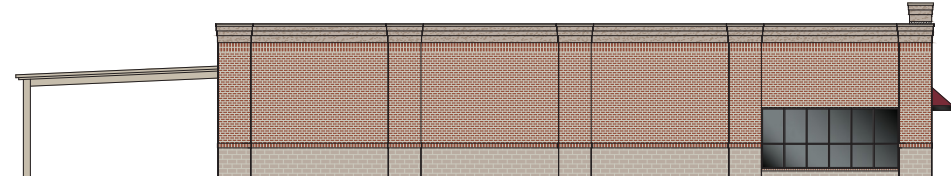


SOUTH BUILDING ELEVATIONS



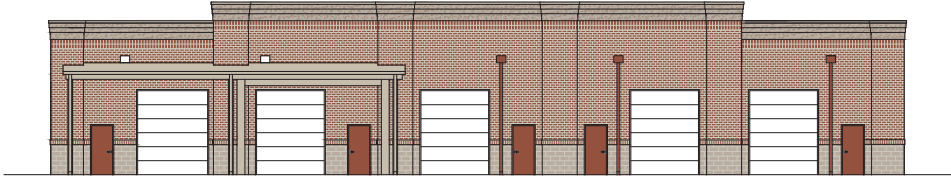
NORTH ELEVATION

SCALE: 1/8" = 1'-0"



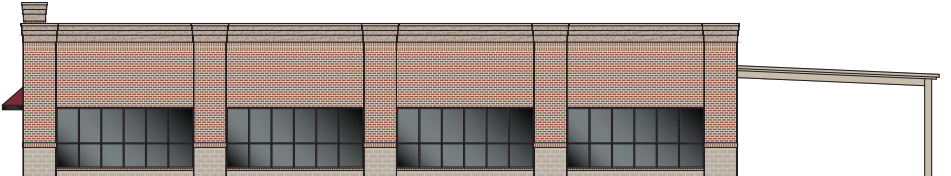
EAST ELEVATION

SCALE: 1/8" = 1'-0"



SOUTH ELEVATION

SCALE: 1/8" = 1'-0"



WEST ELEVATION

SCALE: 1/8" = 1'-0"

CONTACT

HUNT WYCHE | 919.740.4406 | hwyche@triprop.com

All information provided herein is from sources deemed reliable. However, all information is subject to verification. NAI Tri Properties does not independently verify nor warrant the accuracy of the information.





CONTACT

HUNT WYCHE | 919.740.4406 | hwyche@triprop.com

All information provided herein is from sources deemed reliable. However, all information is subject to verification. NAI Tri Properties does not independently verify nor warrant the accuracy of the information.

NAI TRI PROPERTIES

NORTH BUILDING



NORTH BUILDING



SOUTH BUILDING



SOUTH BUILDING



CONTACT

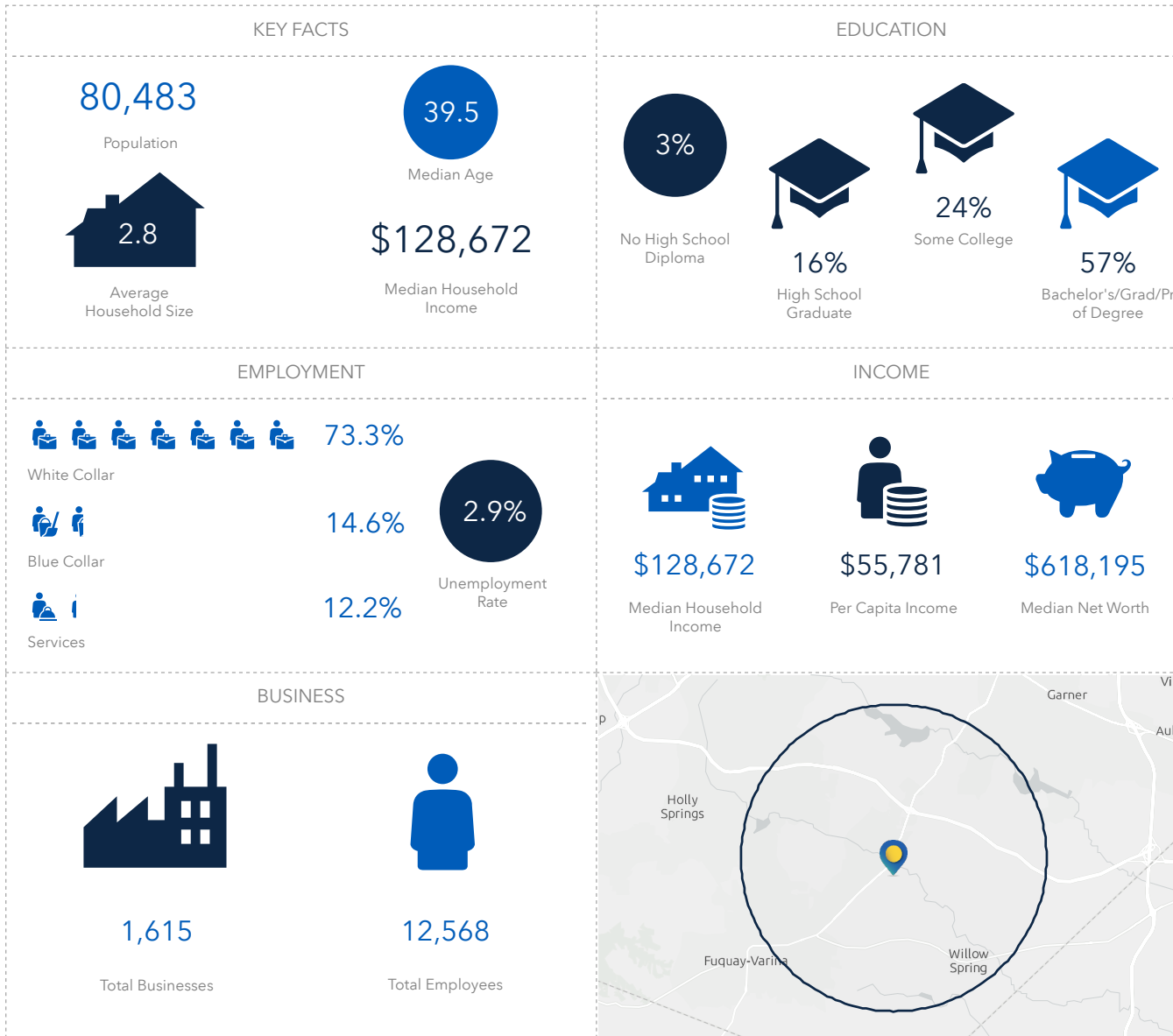
HUNT WYCHE | 919.740.4406 | hwyche@triprop.com

All information provided herein is from sources deemed reliable. However, all information is subject to verification. NAI Tri Properties does not independently verify nor warrant the accuracy of the information.



DEMOGRAPHICS

5 MILE



CONTACT

HUNT WYCHE | 919.740.4406 | hwyche@triprop.com

All information provided herein is from sources deemed reliable. However, all information is subject to verification. NAI Tri Properties does not independently verify nor warrant the accuracy of the information.