

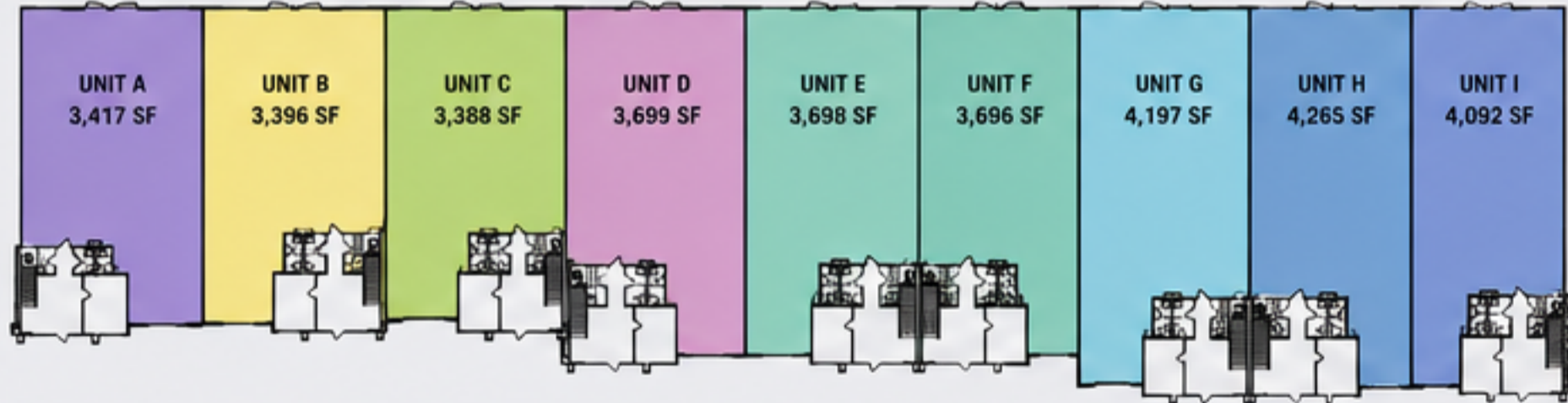
EAST BAY INDUSTRIAL PARK

601 E LAKEVIEW PKWY | PROVO, UTAH



INDUSTRIAL CONDOS FOR LEASE

FLOOR PLAN & UNIT SUMMARY



UNIT	TOTAL SF	MAIN FLOOR SF	MEZZANINE OFFICE SF	UNIT	TOTAL SF	MAIN FLOOR SF	MEZZANINE OFFICE SF
A	3,417 SF	2,794 SF	623 SF	F	3,696 SF	3,073 SF	623 SF
B	3,396 SF	2,774 SF	622 SF	G	4,197 SF	3,579 SF	618 SF
C	3,388 SF	2,768 SF	620 SF	H	4,265 SF	3,646 SF	619 SF
D	3,699 SF	3,075 SF	624 SF	I	4,092 SF	3,469 SF	623 SF
E	3,698 SF	3,075 SF	623 SF	TOTAL BUILDING SIZE: 39,476 SF			



Main floor grade level warehouse with front entry office



Mezzanine office provides additional private office and meeting space



Plenty of parking for tenants and guests

PROPERTY INFORMATION



LEASE RATE

\$1.25

PSF / MONTH
NNN

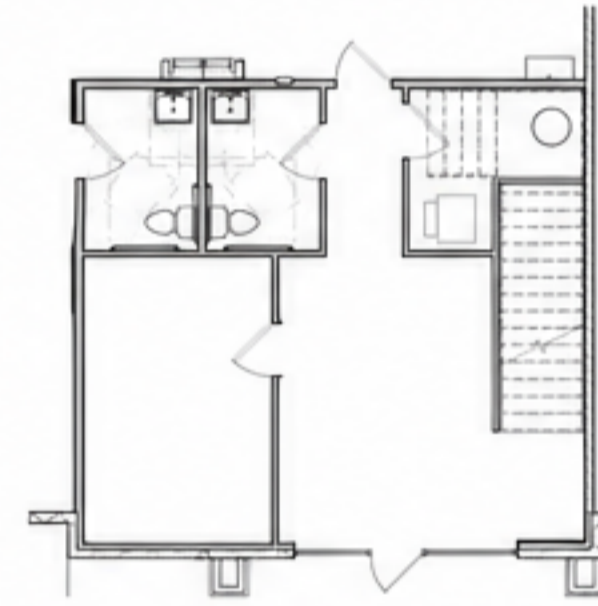


UNIT SIZES

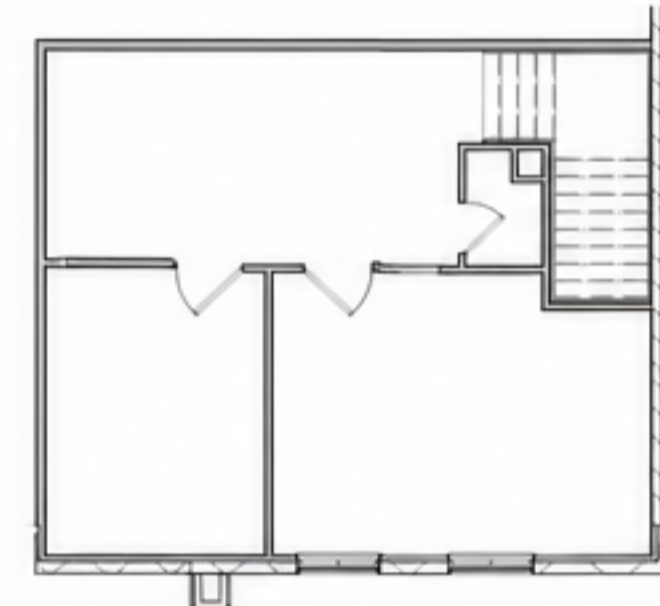
3,388 – 4,265 SF

9 UNITS AVAILABLE

- 23 – 24' CLEAR HEIGHT
- 3 PHASE POWER
- 12' x 14' GRADE LEVEL DOORS
- PLENTY OF PARKING
- MEZZANINE OFFICE IN EACH UNIT
- PROFESSIONAL OFFICE FINISH
- NEW CONSTRUCTION – READY 2025

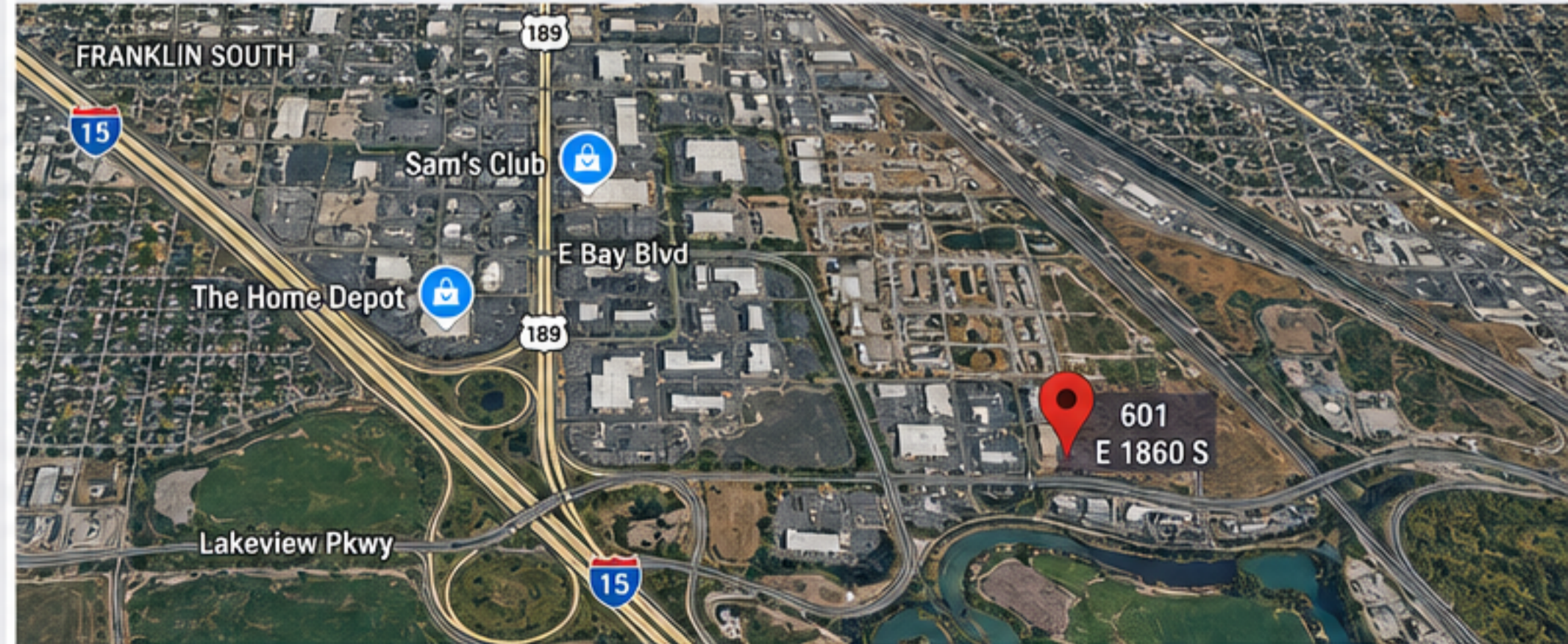


MAIN FLOOR PLAN (TYP.)



MEZZANINE PLAN (TYP.)

LOCATION



FOR LEASING INFORMATION

Greg Perry
(206) 972-0282

ARBOR REALTY