

12304 CARY CIRCLE

19,039 SF STAND-ALONE
INDUSTRIAL BUILDING
FOR LEASE

CBRE

12304 CARY CIRCLE
LA VISTA / NEBRASKA

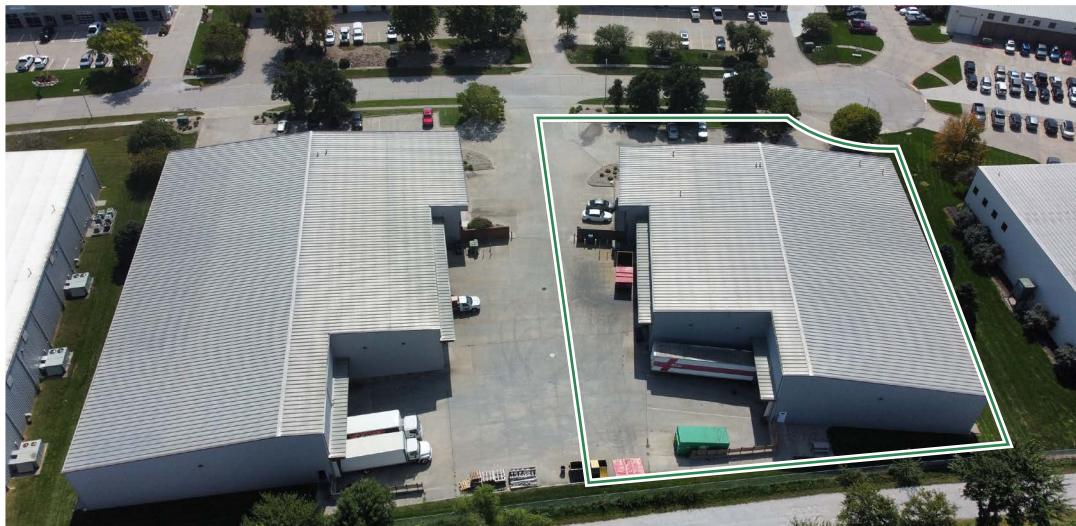


Property Information

Space Available	19,039 SF
Office Space	3,500 SF
Lease Rate	\$8.50 PSF, NNN
Estimated NNN	\$2.60 PSF (2026)

Features

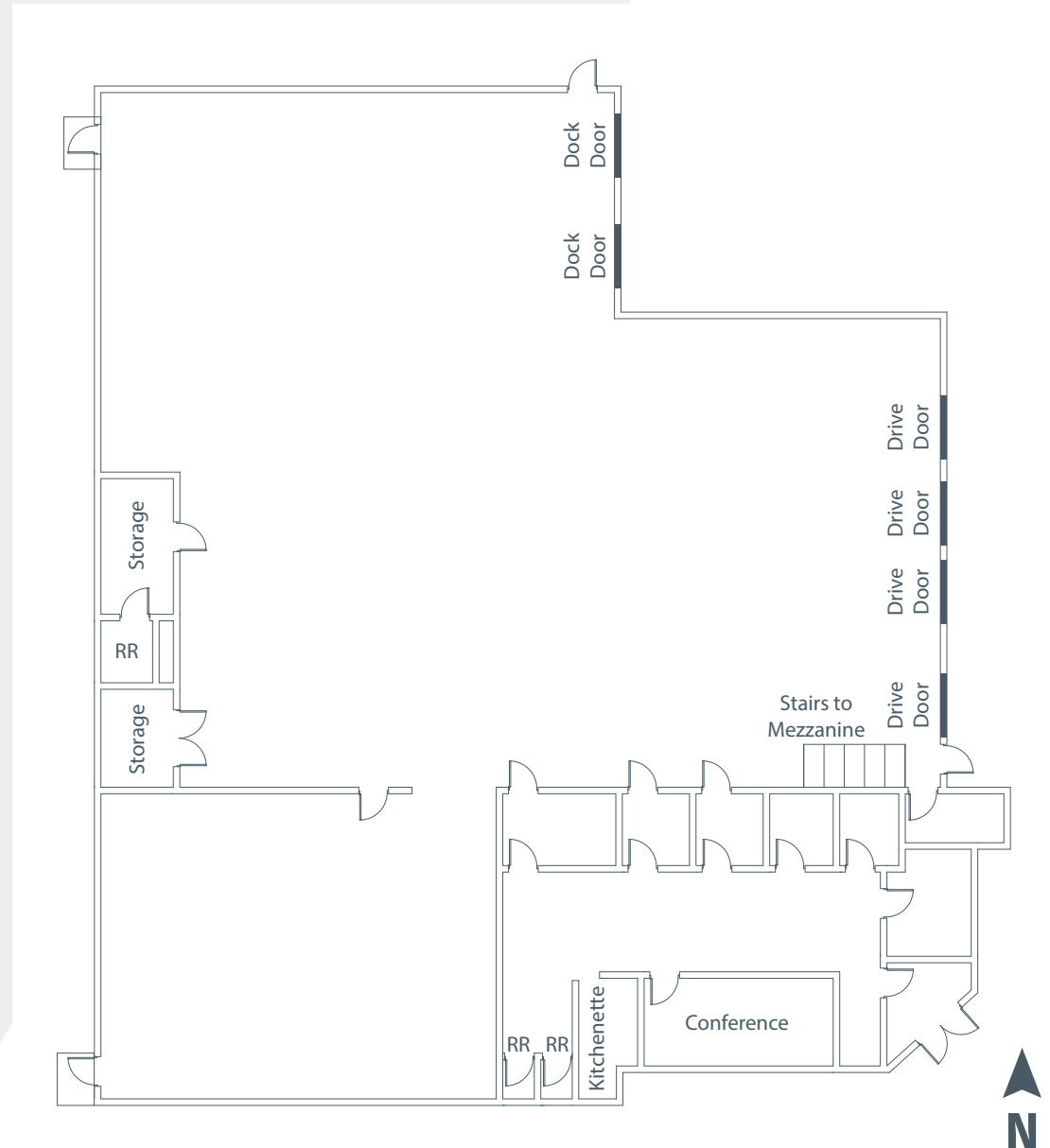
- Newly renovated office space
- Split-face block, glass and steel stand-alone industrial building
- Approximately 3,500 SF office space, consisting of a large conference room, six individual offices and a reception area
- Excellent sales-and-service building
- Mezzanine storage
- Convenient access to I-80 at the Harrison Street exit
- Dock and drive-in doors
- Warehouse area includes separate restrooms, 25'x25' wash bay and parts area



Property Details

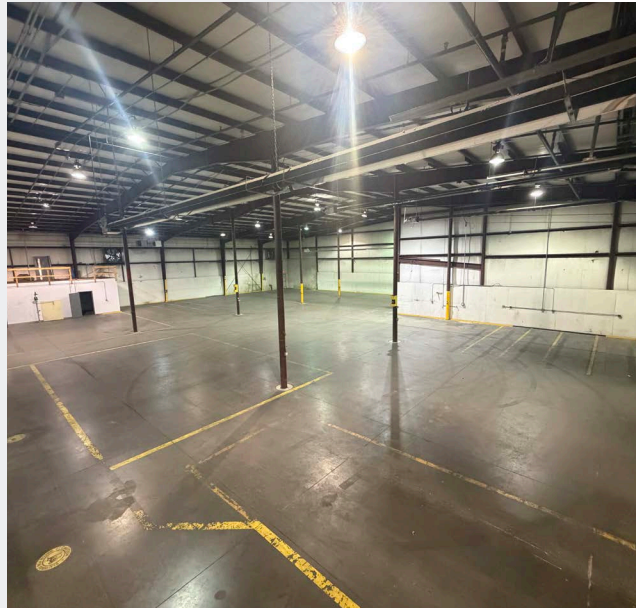
BUILDING DETAILS

BUILDING SIZE	19,039 SF
LOT SIZE	2.6 AC / 113,256 SF
YEAR BUILT	2002
CONSTRUCTION	Metal/concrete
CEILING HEIGHT	22'+
ZONING	I-1 - Heavy Industrial
AIR-CONDITIONED	Office only
HEAT	- Office: Gas forced air - Warehouse: Gas forced air and radiant heat
POWER	3 phase; 480 volt
SPRINKLERED	Yes
DRIVE-IN DOORS	4 - 14'
DOCK HIGH DOORS	2 - 10' with levelers



12304 CARY CIRCLE // LA VISTA, NEBRASKA

Interior Photos



Location



12304 CARY CIRCLE // LA VISTA, NEBRASKA

Location



12304 CARY CIRCLE

19,039 SF STAND-ALONE
INDUSTRIAL BUILDING
FOR LEASE

12304 CARY CIRCLE
LA VISTA / NEBRASKA

**Dean
Hokanson, Jr.**

Vice President
+1 402 697 5844
dean.hokansonjr@cbre.com

**Austin
Obermeyer**

Senior Associate
+1 402 936 0278
austin.obermeyer@cbre.com

© 2026 CBRE, Inc. All rights reserved. This information has been obtained from sources believed reliable but has not been verified for accuracy or completeness. CBRE, Inc. makes no guarantee, representation or warranty and accepts no responsibility or liability as to the accuracy, completeness, or reliability of the information contained herein. You should conduct a careful, independent investigation of the property and verify all information. Any reliance on this information is solely at your own risk. CBRE and the CBRE logo are service marks of CBRE, Inc. All other marks displayed on this document are the property of their respective owners, and the use of such marks does not imply any affiliation with or endorsement of CBRE. Photos herein are the property of their respective owners. Use of these images without the express written consent of the owner is prohibited. Designed by Ashlyn Weidauer. rev032326aw

www.cbre.com/nebraska

CBRE

