



**2 BUILDINGS | 22,962 - 51,582± SF
FOR LEASE**

LOUISVILLE, KY 40209

**4810 AND 4840
CRITTENDEN DRIVE**

CBRE

PROPERTY SPECIFICATIONS

4810 CRITTENDEN DRIVE

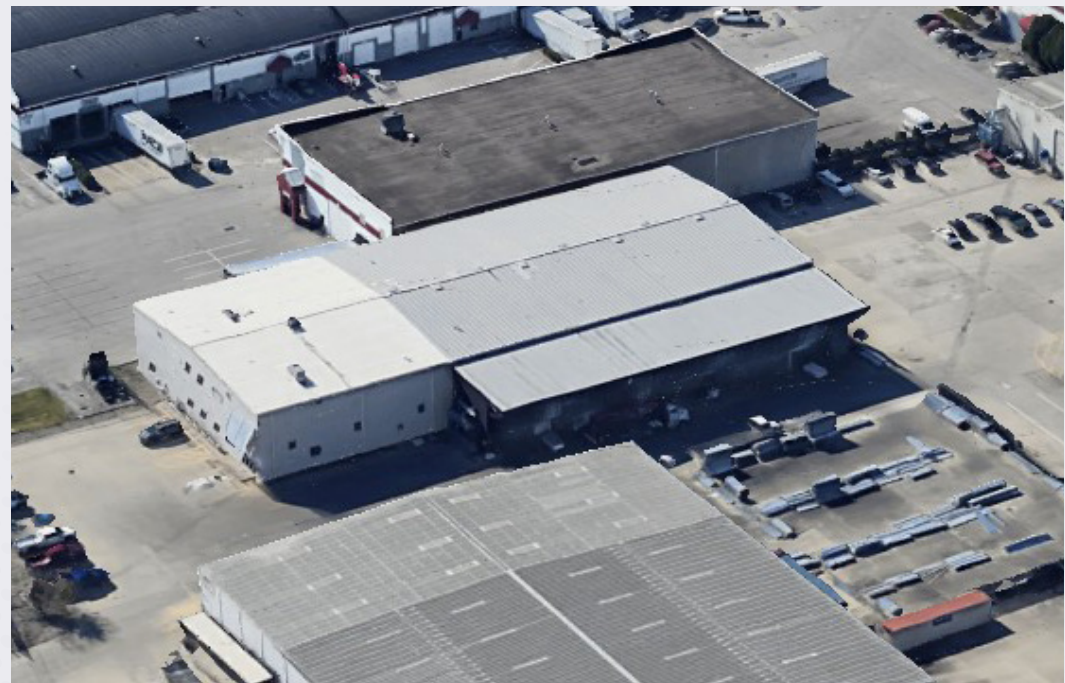
Spec Type	Spec Details
Building Size	28,890± SF
Office Size	675± SF with restroom
Drive-in Doors	(6) 20' X 20' grade level drive-in doors
Outdoor Storage	Large fenced yard area for storage/parking
Clear Height	20' - 24'
Zoning	EZ-1

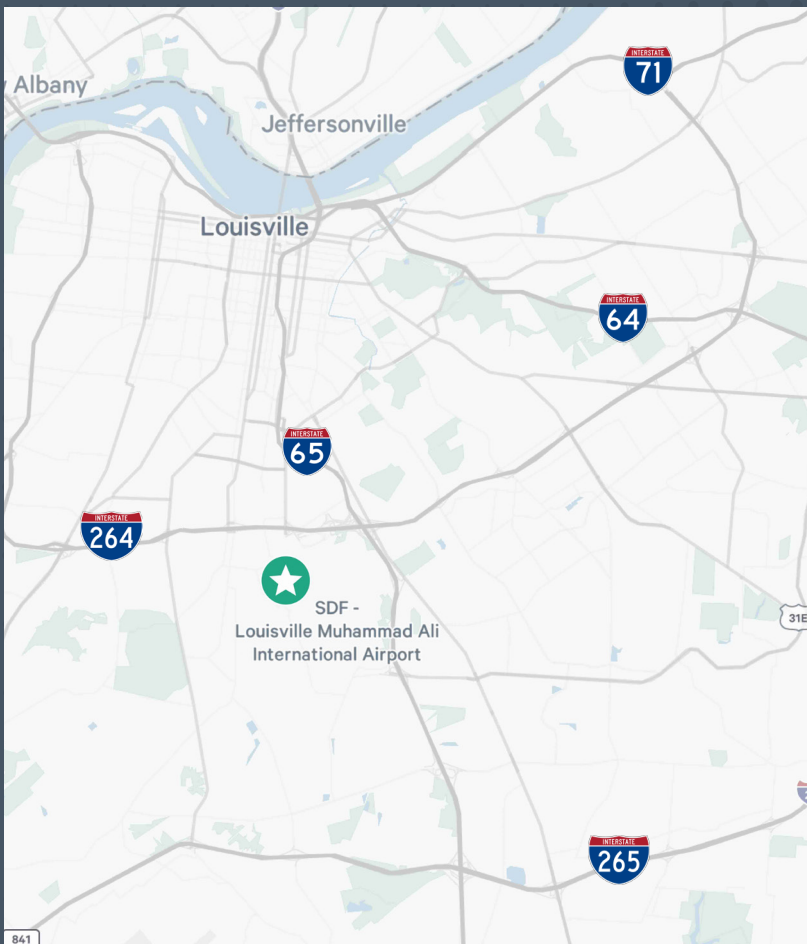


PROPERTY SPECIFICATIONS

4840 CRITTENDEN DRIVE

Spec Type	Spec Details
Building Size	22,962± SF
Office Size	4,100± SF office area 2,600± SF second floor office (not included in building SF)
Drive-in Doors	(1) 16' X 18' grade level drive-in door (1) 14' X 14' grade level drive-in door (1) 9' X 10' grade level drive-in door
Clear Height	22' - 26'
Outdoor Storage	5,550± SF covered outdoor storage
Zoning	EZ-1





4810 AND 4840 CRITTENDEN DRIVE

LOUISVILLE, KY 40209

22,962 - 51,582± SF
2 BUILDINGS FOR LEASE

BLAKE A. SCINTA, CCIM

First Vice President

+1 502 412 7646

blake.scinta@cbre.com

ALEX GROVE

Vice President

+1 502 412 7655

alex.grove@cbre.com

CBRE

© 2026 CBRE, Inc. All rights reserved. This information has been obtained from sources believed reliable but has not been verified for accuracy or completeness. CBRE, Inc. makes no guarantee, representation or warranty and accepts no responsibility or liability as to the accuracy, completeness, or reliability of the information contained herein. You should conduct a careful, independent investigation of the property and verify all information. Any reliance on this information is solely at your own risk. CBRE and the CBRE logo are service marks of CBRE, Inc. All other marks displayed on this document are the property of their respective owners, and the use of such marks does not imply any affiliation with or endorsement of CBRE. Photos herein are the property of their respective owners. Use of these images without the express written consent of the owner is prohibited.