

619 MADISON STREET

Palmyra, NJ 08065

 FOR LEASE

 INDUSTRIAL

 9,065 SF



PROPERTY DESCRIPTION

- 9,065 SF Warehouse
- 3,736 SF Mezzanine
- 18' clear height
- One (1) oversized drive-in (10' x 14')
- Heat in warehouse
- Additional Parking in rear

FOR MORE INFORMATION

Sandro Randazzo

 856.724.4256


 sandro.randazzo@naimertz.com

Jared Palek

 856.745.7873

 jared.palek@naimertz.com

NAIMertz

 **NAI Mertz** | 21 Roland Avenue
Mount Laurel, NJ 08054

856.234.9600 | www.naimertz.com

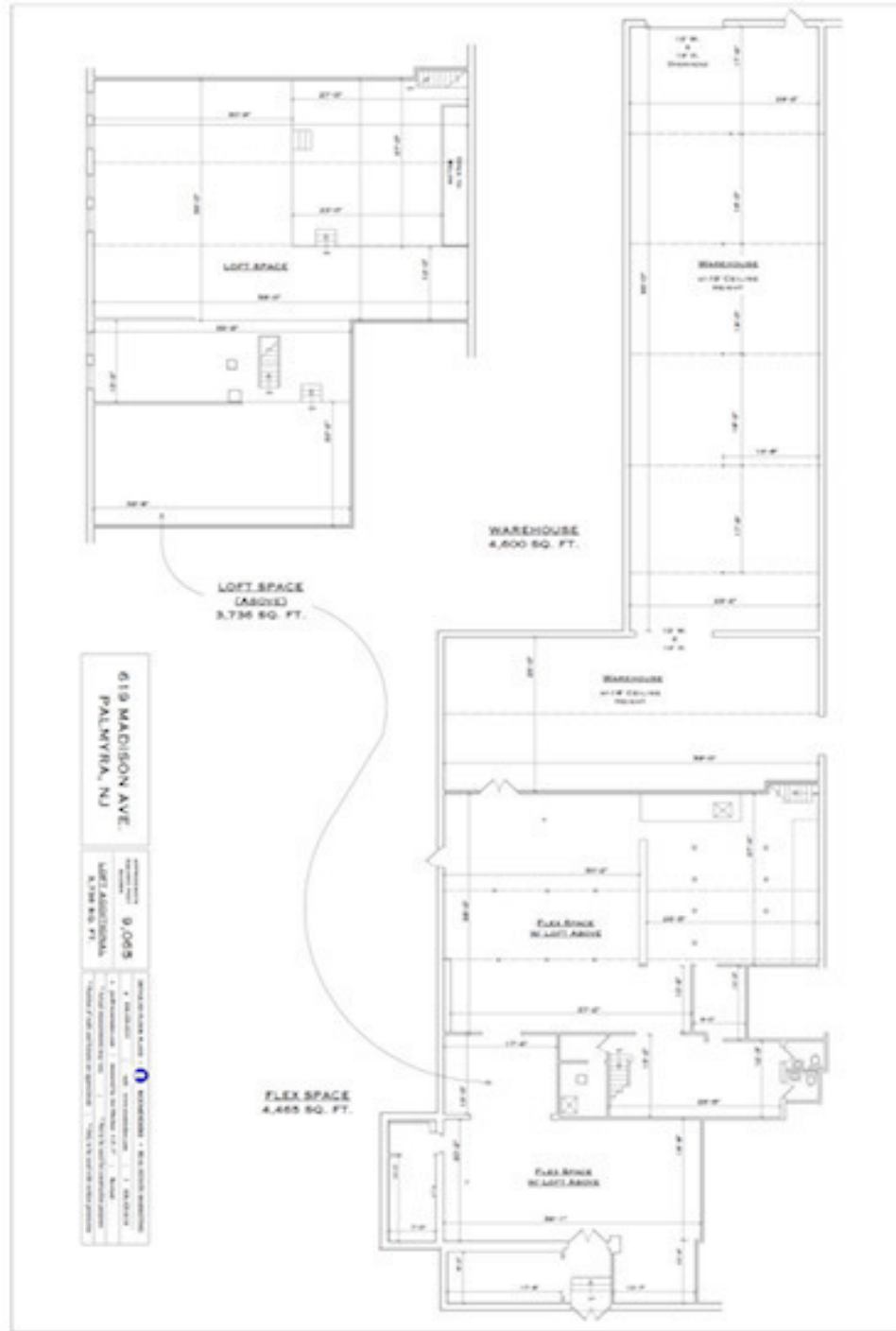
NAI MERTZ DISCLAIMER: NO WARRANTY OR REPRESENTATION, EXPRESS OR IMPLIED, IS MADE AS TO THE ACCURACY OF THE INFORMATION CONTAINED HEREIN, AND THE SAME IS SUBMITTED SUBJECT TO ERRORS, OMISSIONS, CHANGE OF PRICE, RENTAL OR OTHER CONDITIONS, PRIOR SALE, LEASE OR FINANCING, OR WITHDRAWAL WITHOUT NOTICE, AND OF ANY SPECIAL LISTING CONDITIONS IMPOSED BY OUR PRINCIPALS NO WARRANTIES OR REPRESENTATIONS ARE MADE AS TO THE CONDITION OF THE PROPERTY OR ANY HAZARDS CONTAINED THEREIN ARE ANY TO BE IMPLIED. OUTLINES ARE APPROXIMATE AND SHOWN ONLY TO IDENTIFY THE PARCEL IN CONSIDERATION.



619 MADISON STREET

Palmyra, NJ 08065


 FOR LEASE
 INDUSTRIAL
 9,065 SF



FOR MORE INFORMATION

Sandro Randazzo

 856.724.4256


 sandro.randazzo@naimertz.com

Jared Palek

 856.745.7873

 jared.palek@naimertz.com

NAIMertz

 **NAI Mertz** | 21 Roland Avenue
Mount Laurel, NJ 08054
856.234.9600 | www.naimertz.com

NAI MERTZ DISCLAIMER: NO WARRANTY OR REPRESENTATION, EXPRESS OR IMPLIED, IS MADE AS TO THE ACCURACY OF THE INFORMATION CONTAINED HEREIN, AND THE SAME IS SUBMITTED SUBJECT TO ERRORS, OMISSIONS, CHANGE OF PRICE, RENTAL OR OTHER CONDITIONS, PRIOR SALE, LEASE OR FINANCING, OR WITHDRAWAL WITHOUT NOTICE, AND OF ANY SPECIAL LISTING CONDITIONS IMPOSED BY OUR PRINCIPALS NO WARRANTIES OR REPRESENTATIONS ARE MADE AS TO THE CONDITION OF THE PROPERTY OR ANY HAZARDS CONTAINED THEREIN ARE ANY TO BE IMPLIED. OUTLINES ARE APPROXIMATE AND SHOWN ONLY TO IDENTIFY THE PARCEL IN CONSIDERATION.



