



Building For Lease

Central Mid County Location – Page Warson Industrial

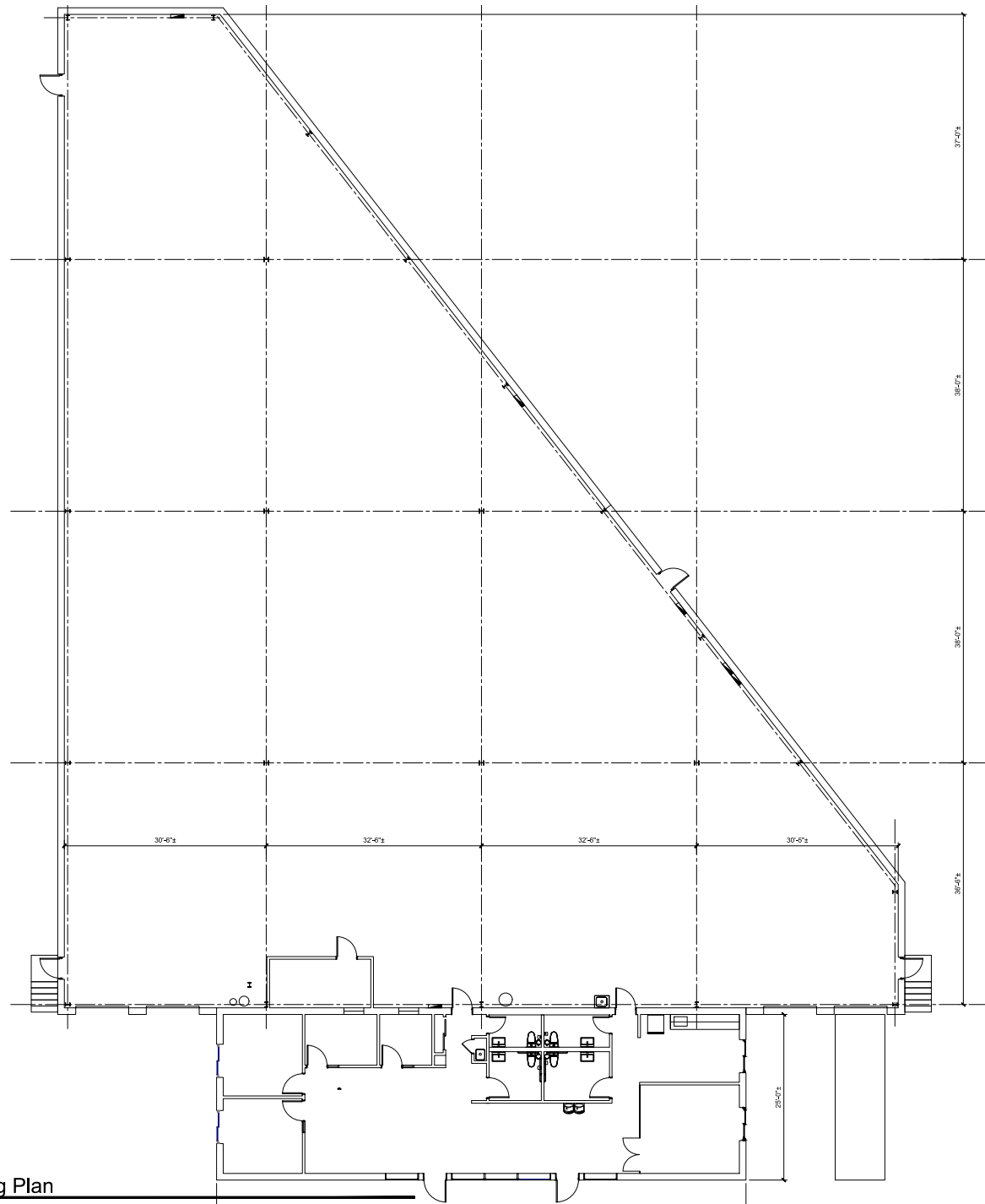
14,658 sf on 1.03 acres with 2,000+/- sf updated office space / 3 docks / 1 ramped door / 24 Parking Space / Fire sprinklers in warehouse / 4 restrooms / kitchen-breakroom / conference room / 4 private offices / fiber served / all new LED lighting / partially fenced interior / excellent truck access


Available Immediately
Some Furniture available
Racking in place



Greg Yawitz
Keat Properties, LLC
Owner/Broker
314-994-7676 x25





 Existing Plan
1/8" = 1'-0"

