

Contact:

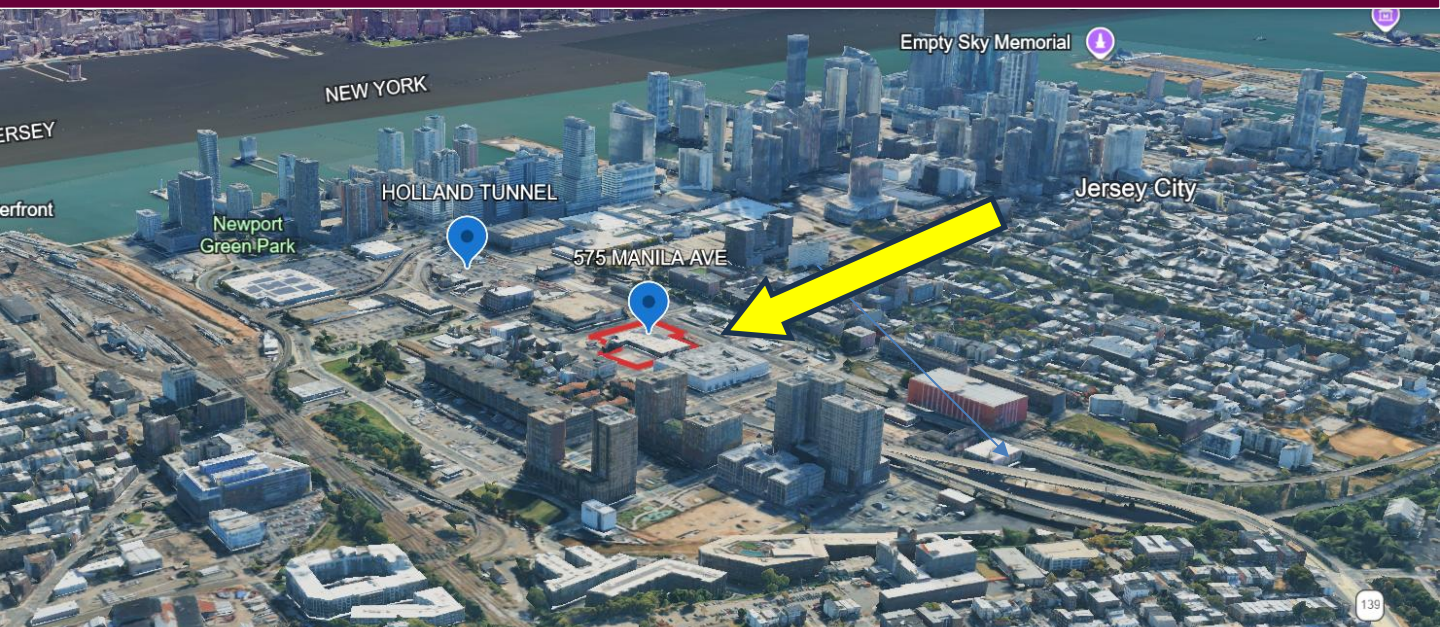
Jamie DiOrio | Broker Salesperson

C: 201.696.5363 | O: 973.992.6363

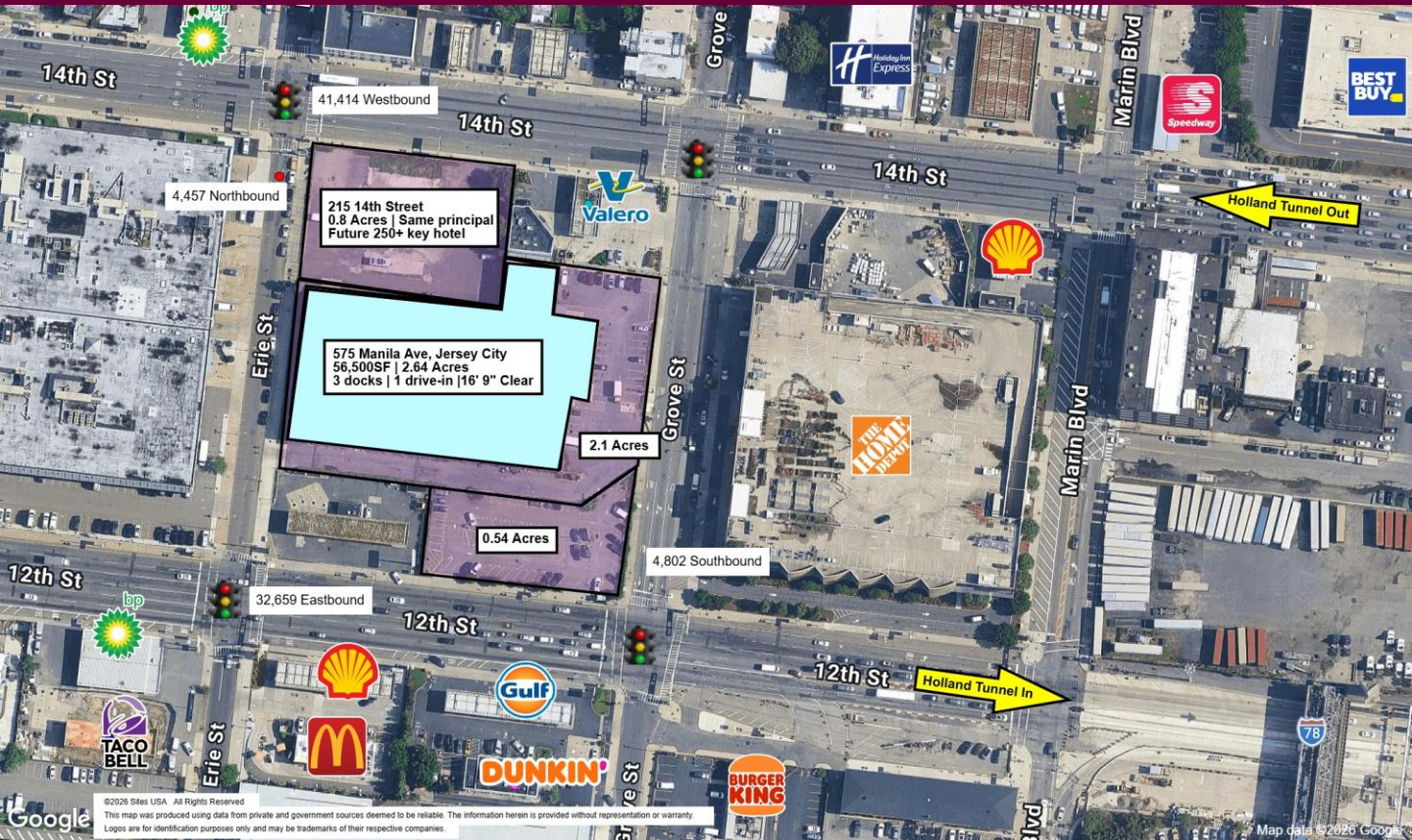
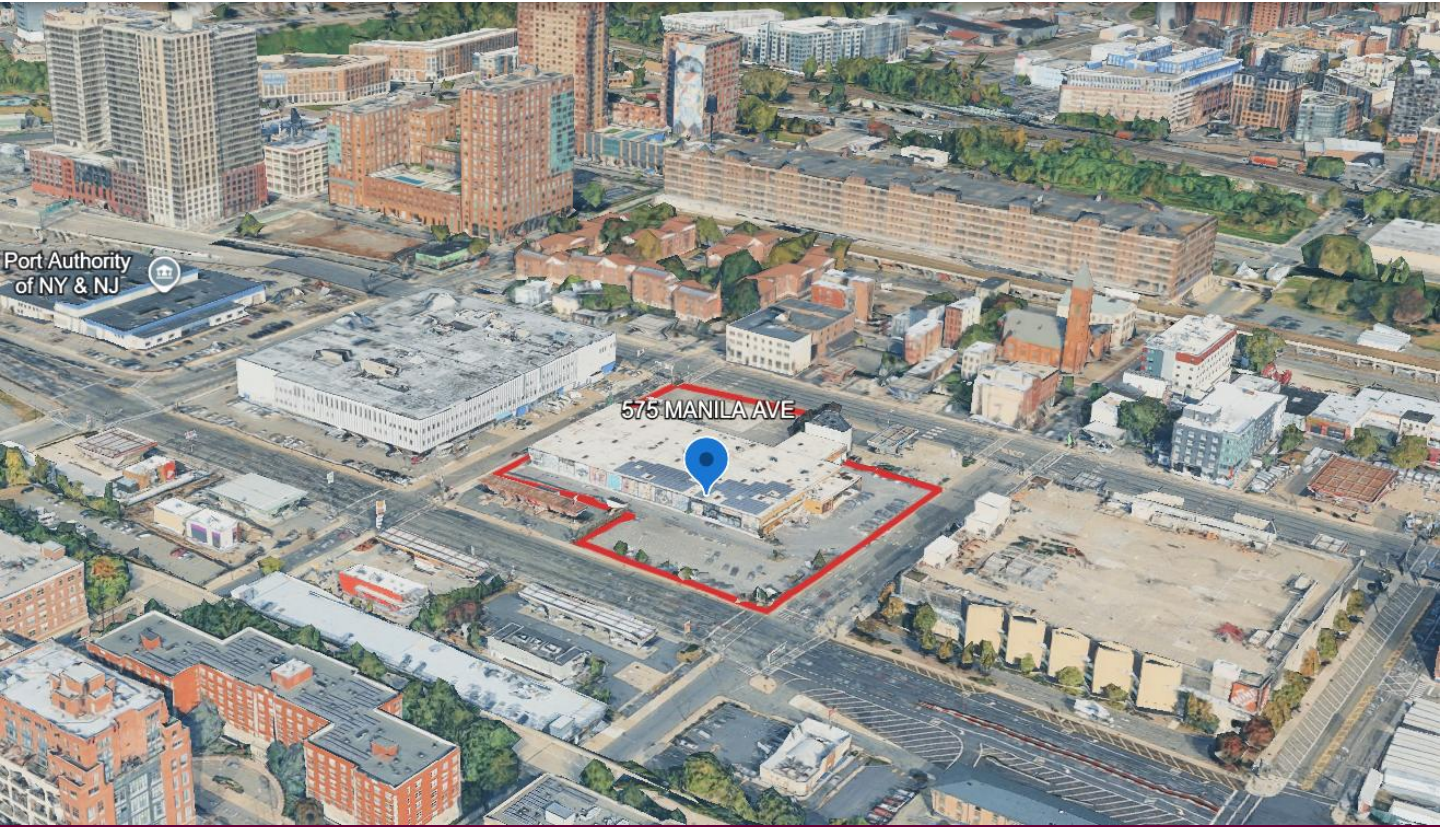
[james.diorio@foxroach.com](mailto:james.diorio@foxroach.com)

**Available For Lease – 56,849SF – call for pricing**  
**Ground lease possibility – call for pricing – 2.62 Acres**  
**575 Manila Ave, Jersey City, NJ 07310**

- This site sits on 2.62 acres just outside the inlet and outlet of the Holland Tunnel.
- **56,849SF on 2.075 acres** with parking - Asking \$39 PSF NNN
- 0.544 acres for ground lease or possible BTS of approximately 11,000SF
- Ground lease **ALL 2.62 acres** possible – call for pricing
- Incredible traffic and visibility. The block this site sits on is surrounded by 4 signalized intersections.
- Over 83,000 VPD pass this site daily. Multiple site access points.
- The existing 56,849SF building has **3 loading docks/doors and 1 drive in door.**
- Zoning – This site sits in the Holland Tunnel Redevelopment Plan.
- Zoning allows a plethora of uses, including **retail, restaurant, wholesale, distribution, warehouse, office, medical, utilities, automobile service station, car wash, bus terminal, parking facilities, manufacturing and more. Multi-family potential on a ground lease.**
- Amazing population and income demographics with tremendous population growth.
- Spectacular branding opportunity for any business with **billboard type signage** opportunity with cars stopped at traffic signals viewing this amazing property.
- A phenomenal pairing of vehicular and foot traffic with a plethora of **new Class A multi-family** properties and extreme population density within a short walk.



# Site Aerial





## Growth Potential

- Thousands of Apartments being built in Jersey City
- Visible retail & commercial corridor.
- Enormous demographic growth.



## Strategic Location

- Holland Tunnel Redevelopment Plan is flexible – Build up to 11 stories.
- Immediate access to and from NYC via Holland Tunnel.
- Easy access for bulk deliveries via highway infrastructure.



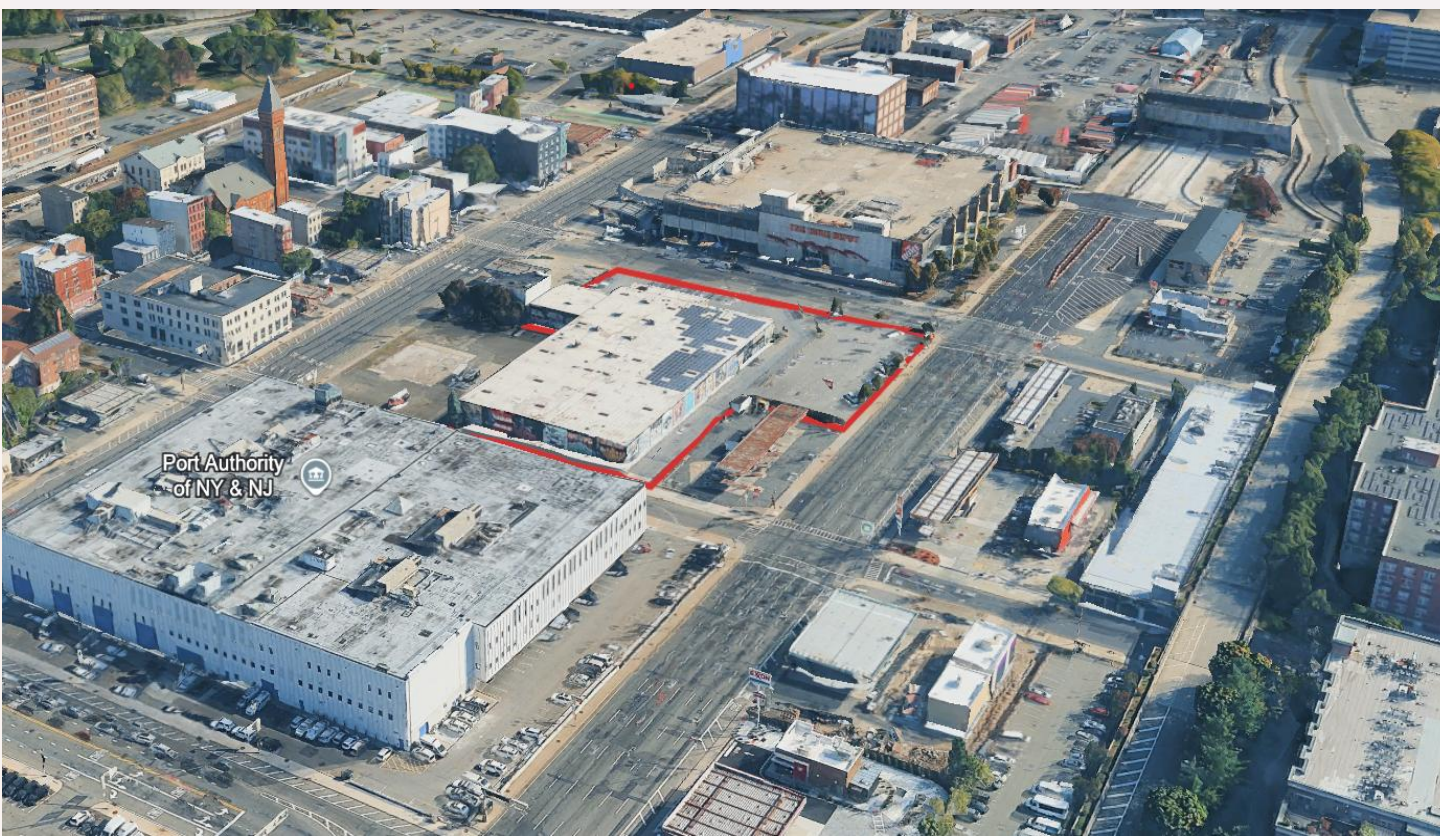
## High Visibility

- Highly visible and accessible site.
- Tremendous vehicular traffic and extreme population density within short walk.
- Billboard type signage to increase brand recognition.



## For Lease

- 56,849SF on 2.075 Acres and 16'2" clear ceiling height
- 0.544 Acres for ground lease or BTS 11,000SF +/- with parking
- OR ground lease 2.62 acres
- Retail/ Industrial / Restaurant / Last Mile Logistics



# Traffic



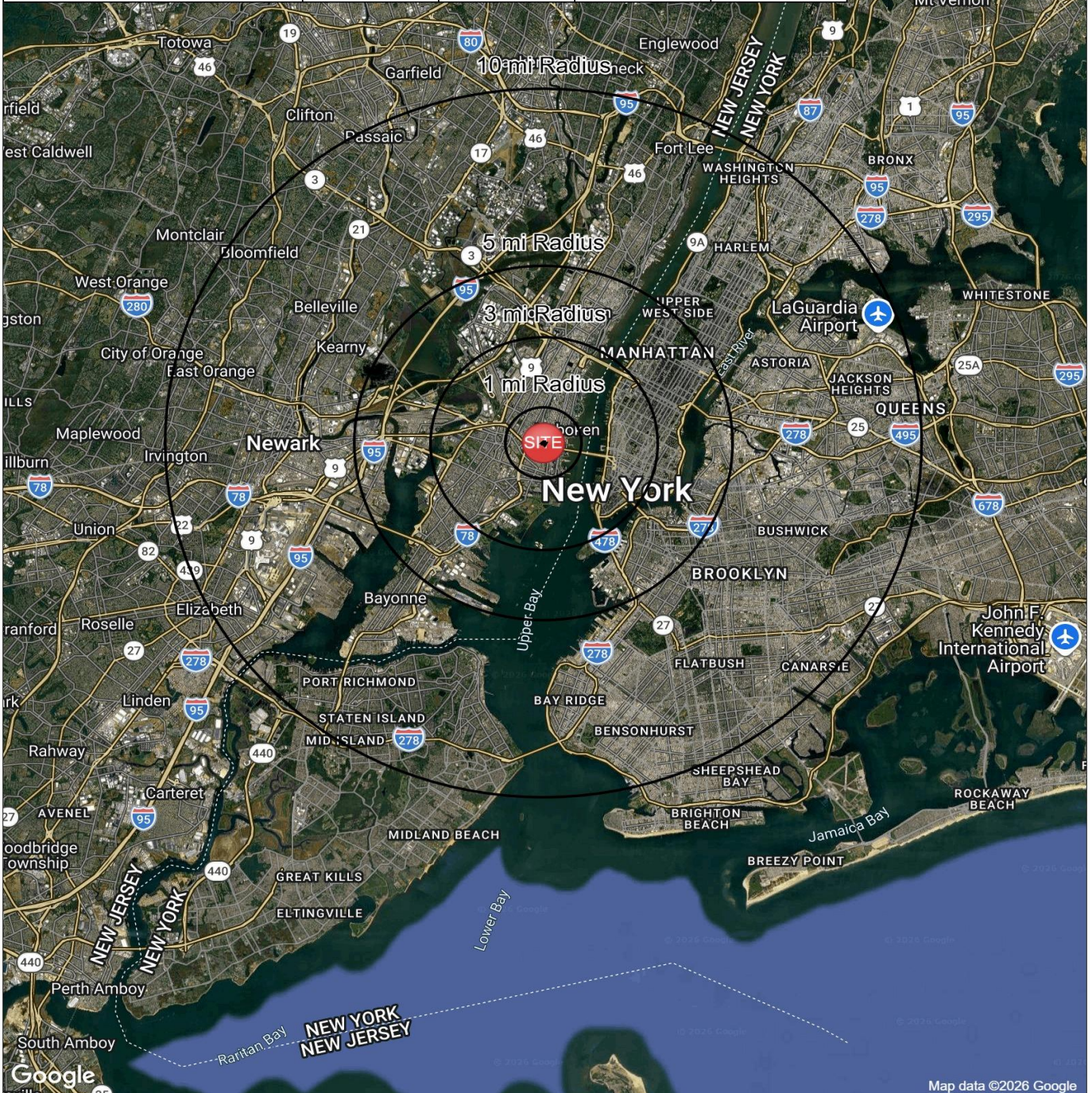
# Demographics – Radius 0.2 mi, 0.4 mi, 0.6 mi, 1 mi

575 Manilla Ave Jersey City, NJ 07310	0.2 mi Radius	0.4 mi Radius	0.6 mi Radius	1 mi Radius
Average HH Income	\$225,814	\$225,240	\$225,393	\$206,117
Median HH Income	\$167,878	\$160,281	\$162,953	\$152,301
Total Household Expenditures (Total)	\$210,396,448	\$790,995,136	\$2,371,843,584	\$7,535,420,928
Population	3,092	11,648	36,011	115,668
Employees	548	3,580	20,983	49,794



# Demographics – Radius 1 mi, 3 mi, 5 mi, 10 mi

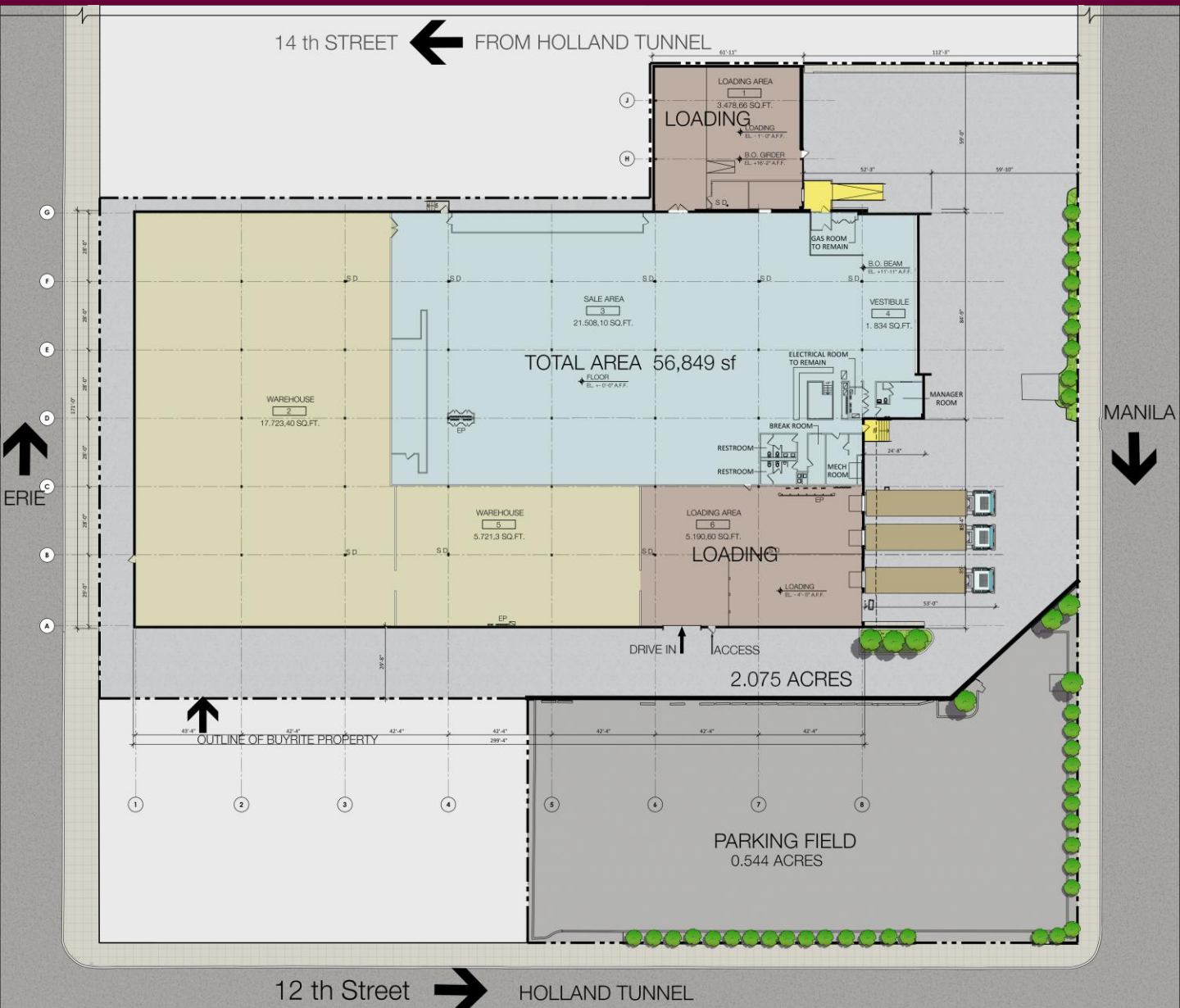
575 Manila Ave Jersey City, NJ 07310	1 mi Radius	3 mi Radius	5 mi Radius	10 mi Radius
<b>Average HH Income</b>	\$206,117	\$221,048	\$217,393	\$155,483
<b>Median HH Income</b>	\$152,301	\$141,856	\$139,489	\$103,862
<b>Total Household Expenditures (Total)</b>	\$7,535,420,928	\$44,114,038,784	\$105,780,011,008	\$315,112,259,584
<b>Population</b>	115,668	744,017	1,759,737	7,045,492
<b>Employees</b>	49,794	825,507	2,206,063	3,488,018



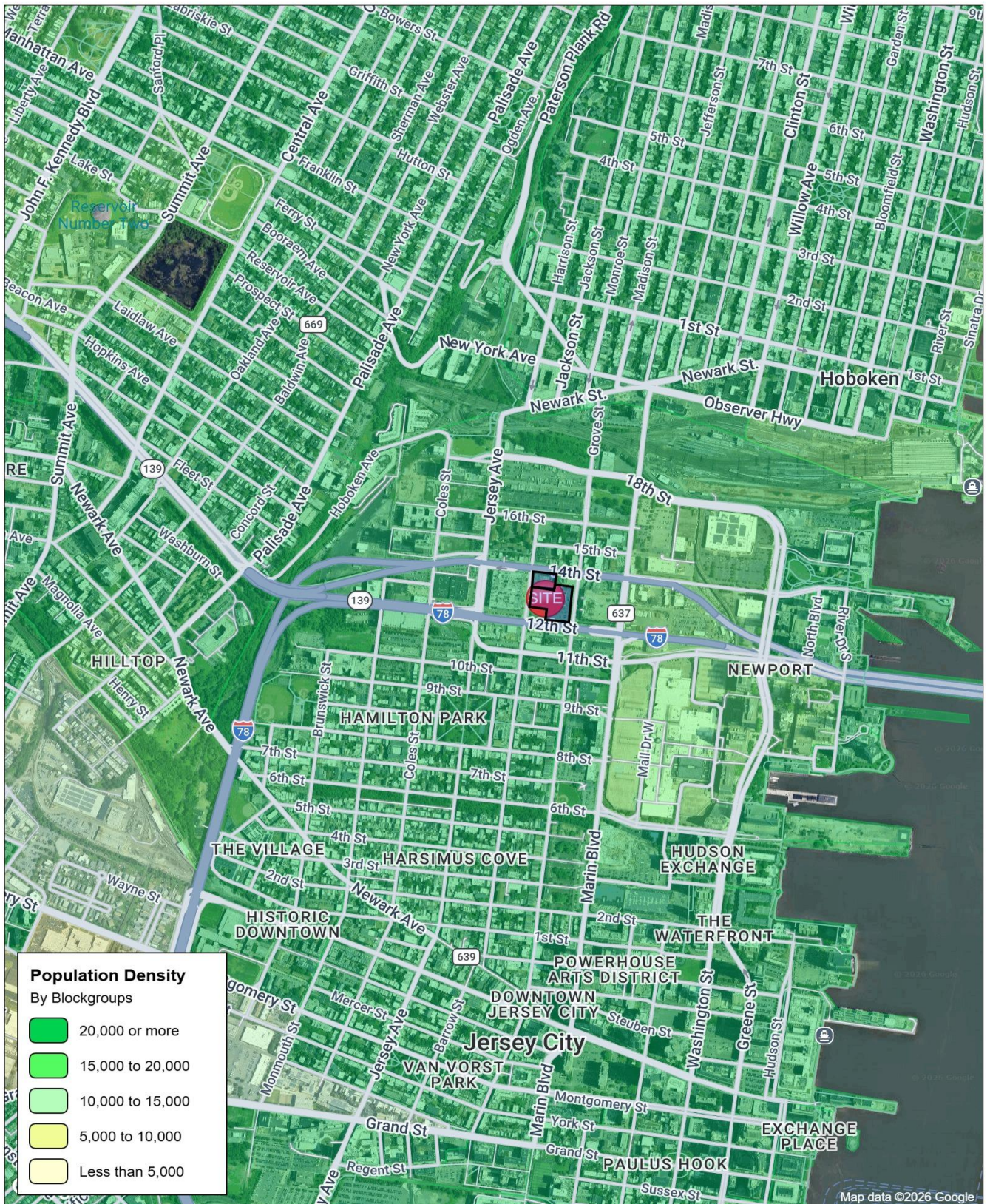


# As-Built in Color

- Existing building square footage is 56,849SF
- The majority of column spacing is 42'4" X 28'
- Clear ceiling height is 16' 2" to underside of joists
- The building contains 3 loading docks and 1 drive in door
- There is the ability to create more loading and drive in if necessary
- The additional 0.544 acres shown as parking field can be made available



# Demographics: Population Density





MANAGING DIRECTOR

Jamie DiOrio

C: 201.696.5363  
[james.diorio@foxroach.com](mailto:james.diorio@foxroach.com)

## DISCLAIMER

ALL INFORMATION CONTAINED HEREIN, INCLUDING INFORMATION ON THE PROPERTY, AND ANY ESTIMATES OR PROJECTIONS, IS BASED UPON INFORMATION PROVIDED BY THE PRINCIPLE OR THIRD PARTIES. CERTAIN OF THE ECONOMIC AND FINANCIAL MARKET INFORMATION CONTAINED HEREIN HAS BEEN OBTAINED FROM PUBLISHED SOURCES AND/OR PREPARED BY OTHER PARTIES. WHILE SUCH SOURCES ARE BELIEVED TO BE RELIABLE, THE PRINCIPLE, FOX & ROACH, OR THEIR RESPECTIVE AFFILIATES OR ANY OTHER PERSON ASSUMES ANY RESPONSIBILITY FOR THE ACCURACY OR COMPLETENESS OF SUCH INFORMATION, AND NO REPRESENTATION OR WARRANTY IS MADE WITH RESPECT THERETO. UNLESS OTHERWISE SPECIFIED HEREIN OR IN A SUPPLEMENT TO THIS MARKETING BROCHURE, ALL INFORMATION CONTAINED IN THIS MARKETING MATERIAL RELATING TO THE PROPERTY, FOX & ROACH, OR THEIR RESPECTIVE AFFILIATES HAS BEEN COMPILED AS OF THE DATE SET FORTH ON THE COVER PAGE OF THIS MARKETING MATERIAL. ANY TARGETED RETURNS, PROJECTIONS OR OTHER FORECASTS CONTAINED HEREIN ARE BASED ON SUBJECTIVE ESTIMATES AND ASSUMPTIONS ABOUT CIRCUMSTANCES AND EVENTS THAT HAVE NOT YET TAKEN PLACE, MAY NEVER TAKE PLACE, AND ARE SUBJECT TO MATERIAL VARIATION. ACCORDINGLY, THERE CAN BE NO ASSURANCE THAT ANY PROJECTED, TARGETED OR FORECASTED RESULTS WILL BE ATTAINED. TARGETED OR POTENTIAL PERFORMANCE RESULTS MAY NOT BE ACHIEVED, AND THERE CAN BE NO ASSURANCE THAT THE INVESTORS OR PURCHASERS WILL ACHIEVE THE PROFFERED RESULTS. ANY BUYER AND/OR INVESTOR MUST VERIFY THE INFORMATION PROVIDED, AND CONDUCT THEIR OWN DUE DILIGENCE ON THE ASSUMPTIONS MADE HEREIN. BUYER SHALL CONDUCT SUCH INSPECTIONS, INVESTIGATIONS AND OTHER INDEPENDENT EXAMINATIONS OF THE PROPERTY AND RELATED MATTERS AS BUYER DEEMS NECESSARY, INCLUDING, BUT NOT LIMITED TO, THE PHYSICAL AND ENVIRONMENTAL CONDITIONS THEREOF, AND WILL RELY UPON SAME AND NOT UPON ANY WRITTEN OR ORAL STATEMENTS OF FOX AND ROACH, NOR OF ANY OFFICER, DIRECTOR, EMPLOYEE, AGENT, CONSULTANT, CONTRACTOR. BUYER ACKNOWLEDGES THAT ALL INFORMATION OBTAINED BY BUYER WAS OBTAINED FROM A VARIETY OF SOURCES, AND SELLER WILL NOT BE DEEMED TO HAVE REPRESENTED OR WARRANTED THE COMPLETENESS, TRUTH OR ACCURACY OF ANY OF THE DOCUMENTS OR OTHER SUCH INFORMATION HERETOFORE OR HEREAFTER FURNISHED TO BUYER.