

FOR LEASE - OPELIKA RD



Available:

1000 Sq Ft of Office Space w/ 1000 sq ft of flex warehouse.

Zoned:

Price:

\$ 2700.00 per month

Nearby:

Byrons Smokehouse, Advanced Auto Parts, Two Maids and a Mop, Auburn Tire and Auto

Location:

453 Opelika Rd, Auburn AI 36830



2415 Moores Mill Rd,
Suite 265 Box 226
Auburn, AI 36830
www.comcre.com

FOR LEASE

453 Opelika Rd Auburn, AL 36830



.LOT SIZE:

-.58 Acres

HWY Access:

I85 EXIT 51 – 4.5 Miles I85 EXIT 57-4.0

Miles HWY 280 -5.0 Miles

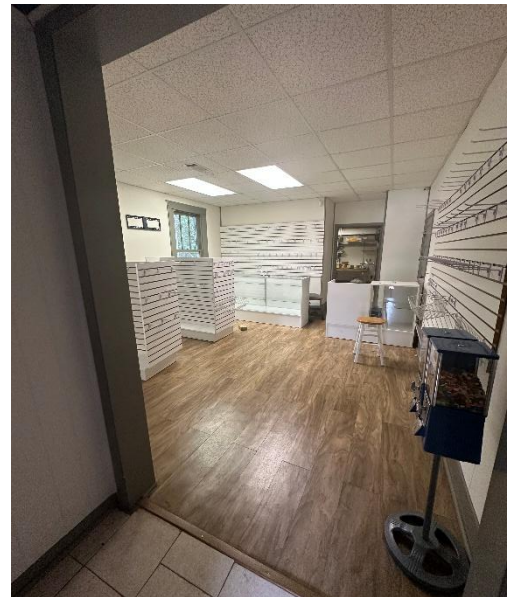
PROPERTY INFO:

-Great Location w/proximity to downtown Auburn

-Gentle Topo

-Paved Road Frontage

-Office Spaces with small flex storage

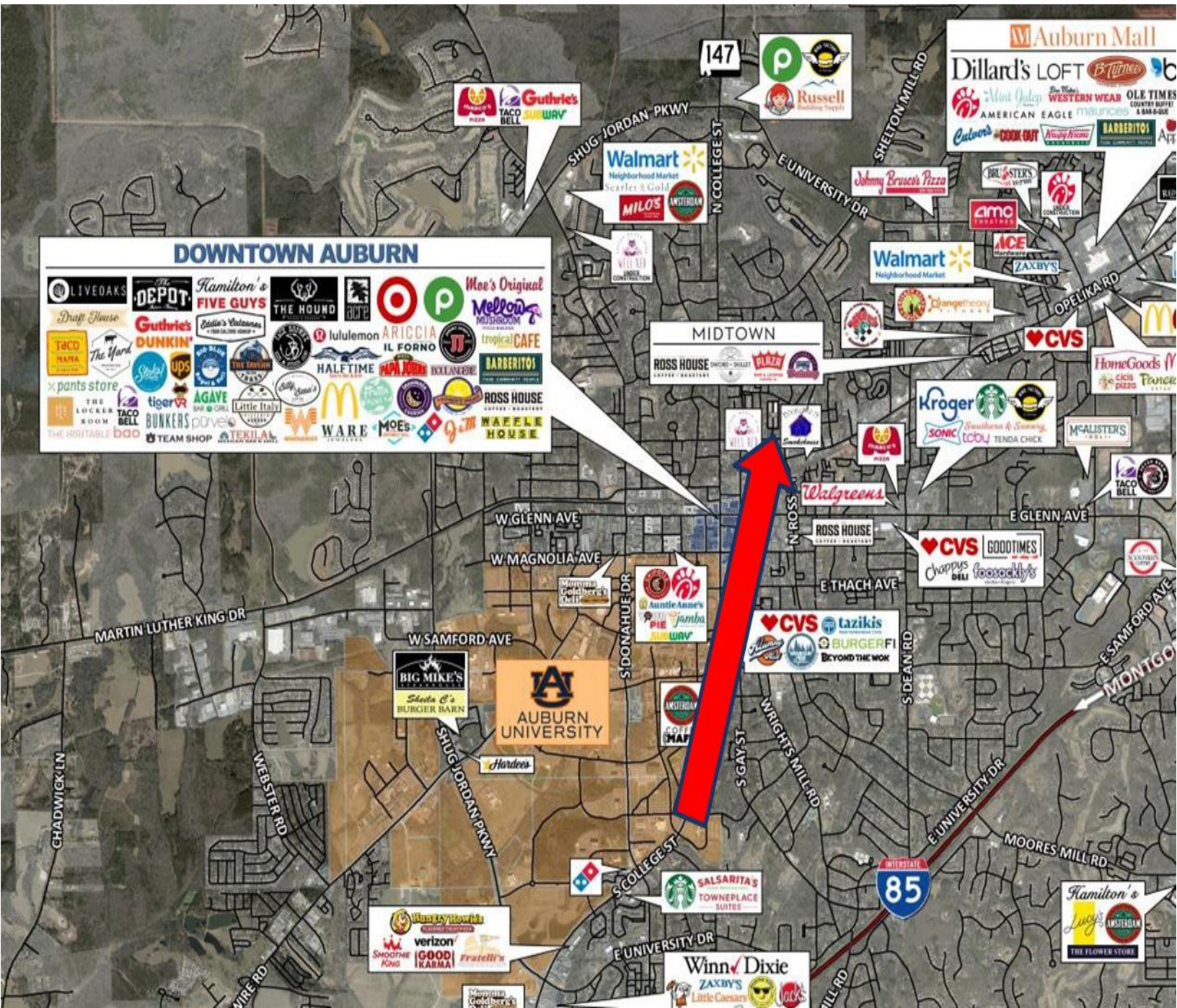


**COMPREHENSIVE
COMMERCIAL**

2415 Moores Mill Rd,
Suite 265 Box 226
Auburn, AL 36830
www.Comcre.com

Cole Maxwell
Associate Broker
334-707-8402 Mobile
colemaxwell707@gmail.com

Map



COMPREHENSIVE
COMMERCIAL

2415 Moores Mill Rd,
Suite 265 Box 226
Auburn, Al 36830
www.Comcre.com

Cole Maxwell
Associate Broker
334-707-8402 Mobile
colemaxwell707@gmail.com