

DENVER, COLORADO

EST.

Blake

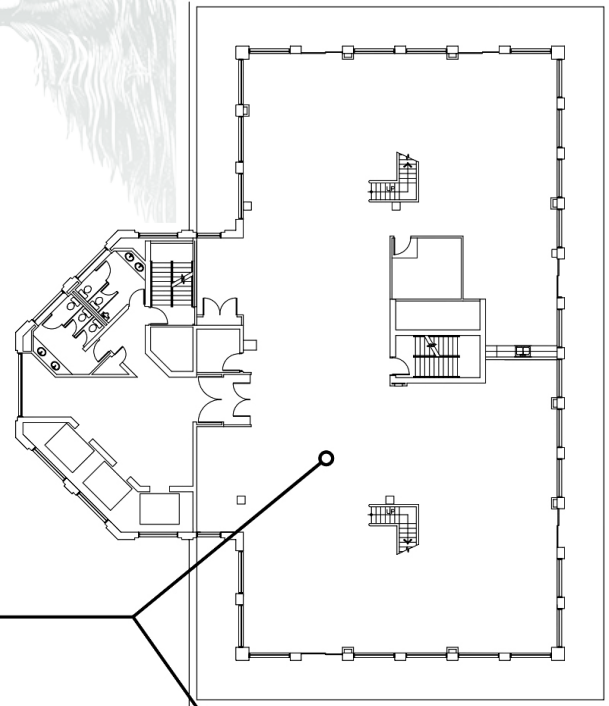
1887

STREET TERRACE

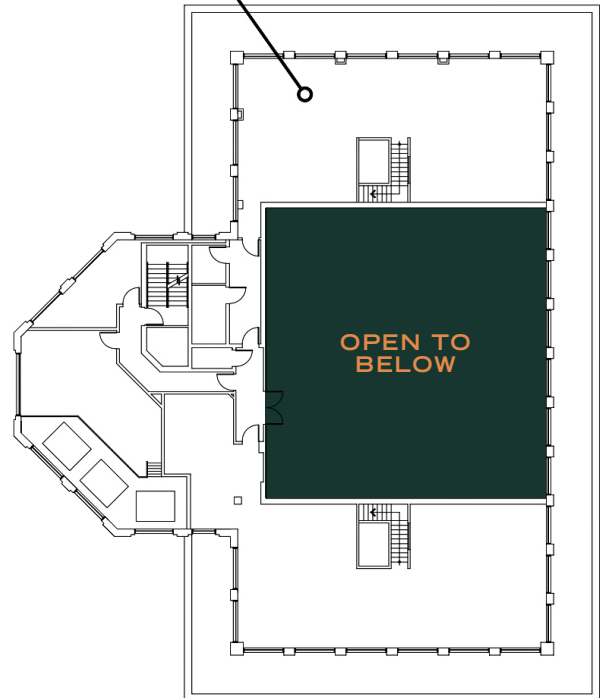
1860 BLAKE STREET, LODO

SUITE 900
7,300 RSF

Spaces are combined with two
internal stairwells for one 11,372
RSF space



SUITE 1000
4,072 RSF



FOR MORE INFORMATION, CONTACT:

JAMIE GARD
Vice Chairman
tel. 303-260-4341
jamie.gard@nmrk.com

WHITNEY HAKE
Senior Managing Director
tel. 303-260-4202
whitney.hake@nmrk.com

GRACE LESSARD
Associate Director
tel. 303-260-4210
grace.lessard@nmrk.com

NEWMARK