

# SUMNER CORPORATE PARK ADAMS BUILDING

2201 140th Ave E, Sumner WA 98390

152,919 SF  
Industrial Space  
for Lease  
Available Now



**Scott Carter**  
+1 425 761 5880  
scott.carter@jll.com

**David Cahill**  
+1 206 930 5599  
david.cahill@jll.com



# CRAFTED FOR SUCCESS

## Project Specifications



Sumner, WA



Highway access



Ample Parking



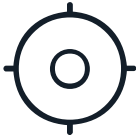
235' building depth



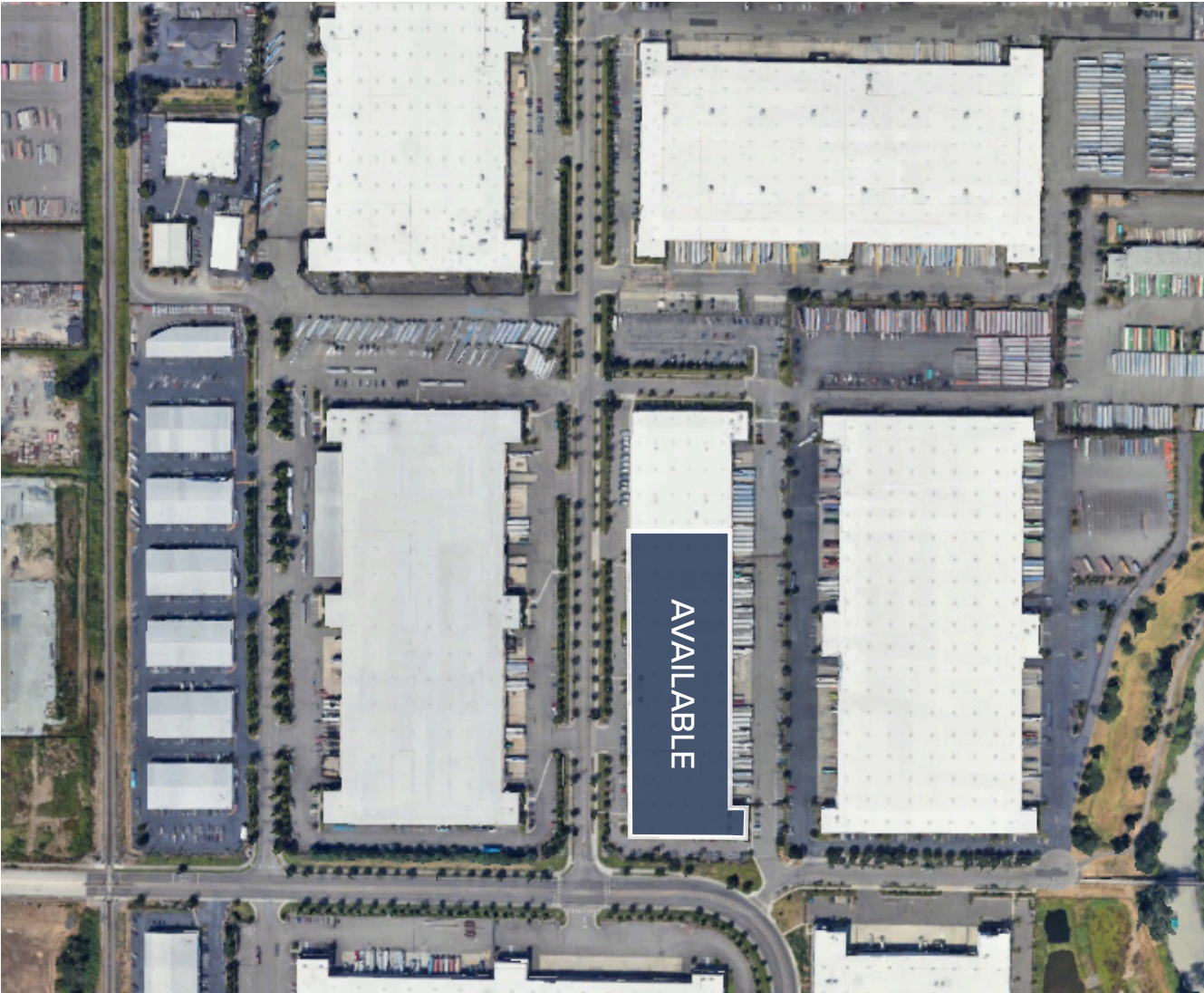
Dock and grade-level loading



Fenced truck court with gated access



Close proximity to amenities





**152,919 SF**

Available with 5,987 SF Office  
(two floors) - 1/1/25 availability



**128'**

Truck maneuverability



**30'**

Clear Height



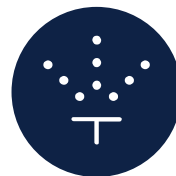
**40**

Dock-high doors / 1 grade-level



**39'2" x 60'**

Typical column spacing



**ESFR**

Sprinklers



**POWER**

800 amps, 277/480V 3-phase

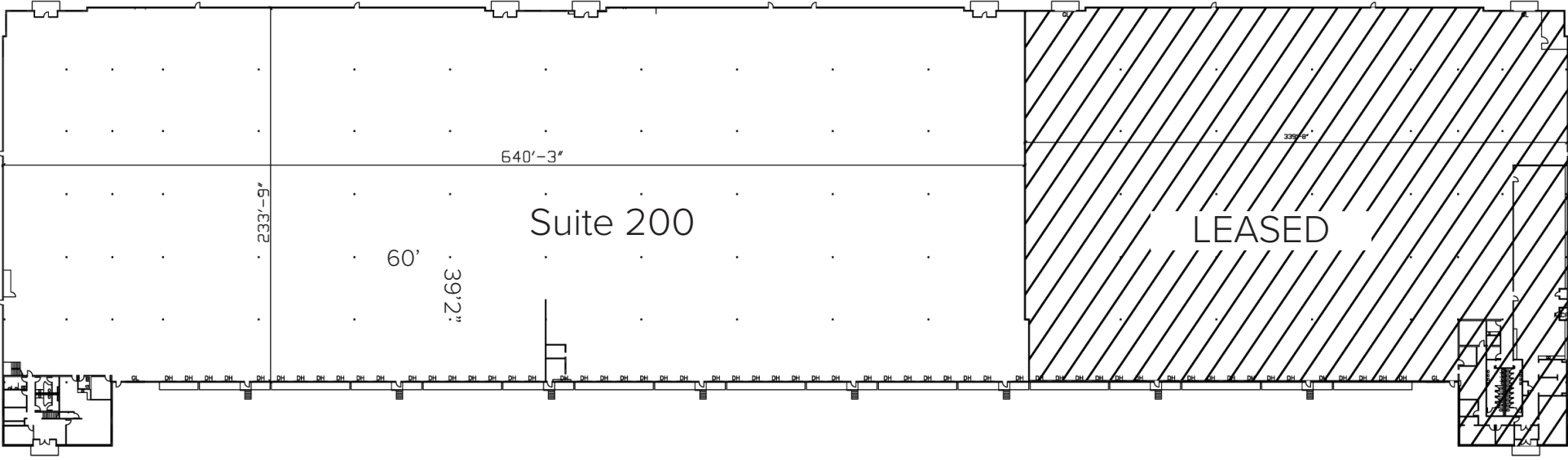


**100+**

Parking stalls

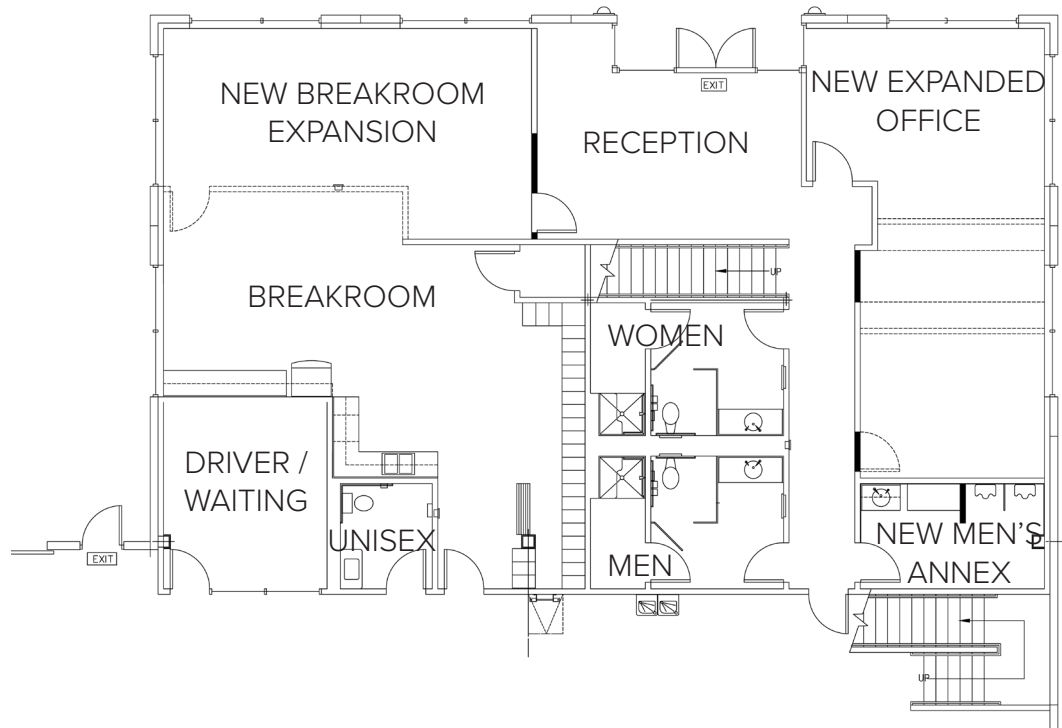
# UNLOCK YOUR POTENTIAL

152,919 SF  
available



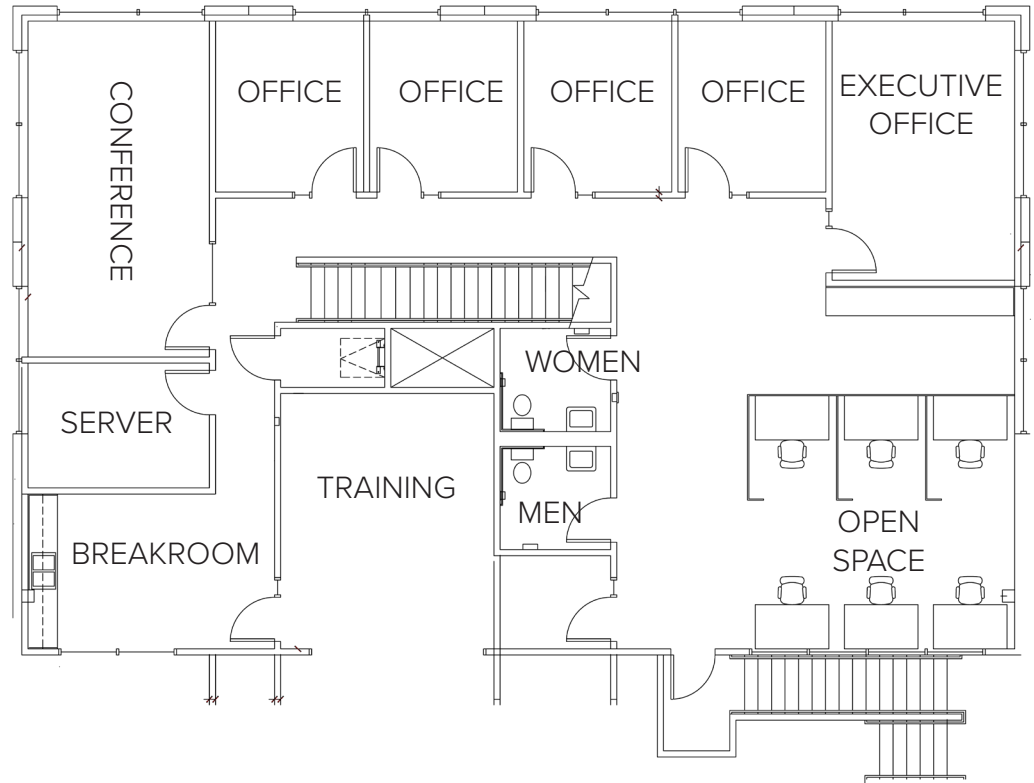
# FIRST FLOOR PLAN

3,034 SF  
office



# MEZZANINE PLAN

2,953 SF  
office



# PRIME LOCATION

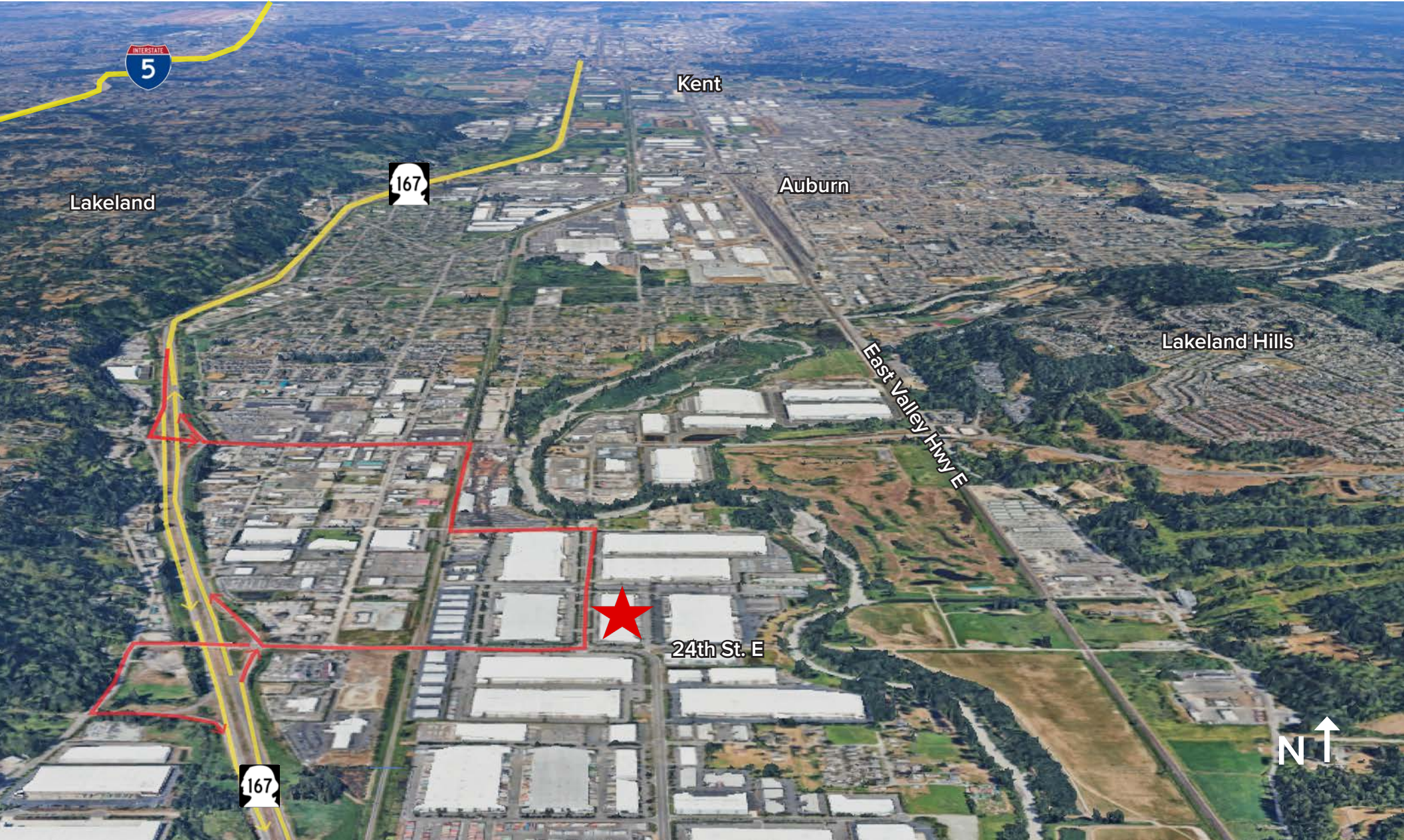
**2 minutes**  
Highway 167

**15 minutes**  
Interstate 5

**30 minutes**  
Port of Tacoma

**30 minutes**  
SeaTac Airport

**40 minutes**  
Port of Seattle



# IN GOOD COMPANY





## FOR INFORMATION CONTACT:

**Scott Carter**

+1 425 761 5880

scott.carter@jll.com

**David Cahill**

+1 206 930 5599

david.cahill@jll.com



Although information has been obtained from sources deemed reliable, JLL does not make any guarantees, warranties or representations, express or implied, as to the completeness or accuracy as to the information contained herein. Any projections, opinions, assumptions or estimates used are for example only. There may be differences between projected and actual results, and those differences may be material. JLL does not accept any liability for any loss or damage suffered by any party resulting from reliance on this information. If the recipient of this information has signed a confidentiality agreement with JLL regarding this matter, this information is subject to the terms of that agreement.

@2024 Jones Lang LaSalle IP, Inc. All rights reserved