



SOUTH PARK GROUP

www.southparkgroup.com



FOR LEASE

PRIME RETAIL / BEAUTY SALON / SPA

8310 Beverly Boulevard
Los Angeles, California 90048

Currently a barber shop located near the Robertson Design District and many high end furniture and interior design showrooms in the area. Excellent exposure on Beverly Blvd. near the Beverly Center, Beverly Connection and across from Blue Bottle Coffee.

JACK RAVAN

Tel. 323.782.1270

E. jackravan@southparkgroup.com

No. 00890189

AVAILABLE SPACE

Size: Approximately 2,200 sqft of Ground Floor space

Rate: \$4.50 per sqft, NNN

Parking: Available in rear

SOUTH PARK GROUP | 8322 Beverly Blvd., Suite 301 | Los Angeles, CA 90048

This information has been furnished by sources that we deem reliable, but for which we assume no liability. The information contained herein is given, in confidence, with the understanding that all negotiations pertaining to this property be handled through the submitting office. All measurements are approximate.

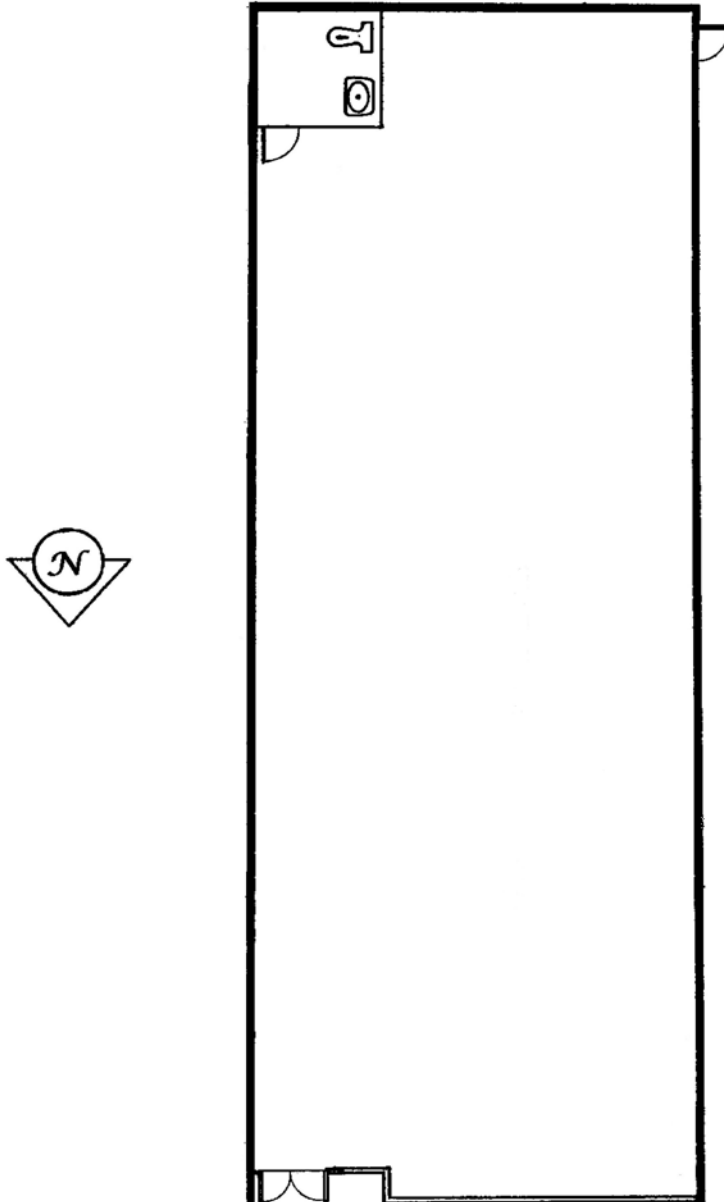


SOUTH PARK GROUP

www.southparkgroup.com

FLOOR PLAN

8310 Beverly Blvd., Los Angeles, California 90048



SOUTH PARK GROUP | 8322 Beverly Blvd., Suite 301 | Los Angeles, CA 90048

This information has been furnished by sources that we deem reliable, but for which we assume no liability. The information contained herein is given, in confidence, with the understanding that all negotiations pertaining to this property be handled through the submitting office. All measurements are approximate.

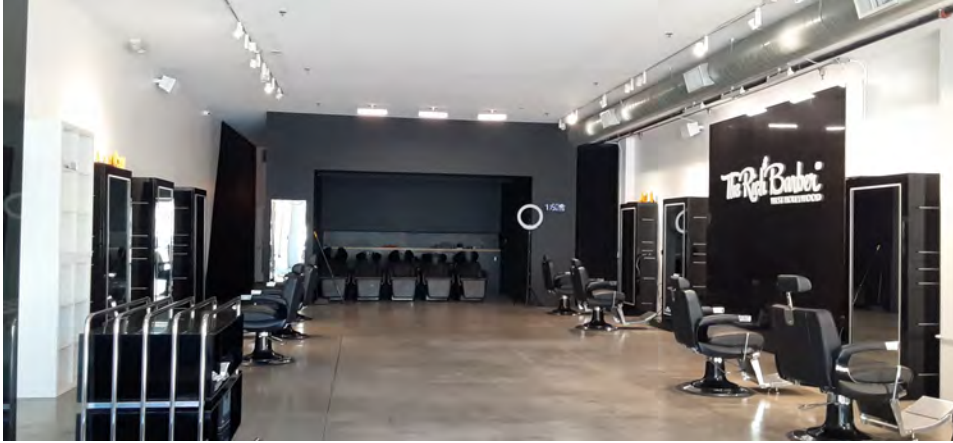


SOUTH PARK GROUP

www.southparkgroup.com

INTERIOR

8310 Beverly Blvd., Los Angeles, California 90048



SOUTH PARK GROUP | 8322 Beverly Blvd., Suite 301 | Los Angeles, CA 90048

This information has been furnished by sources that we deem reliable, but for which we assume no liability. The information contained herein is given, in confidence, with the understanding that all negotiations pertaining to this property be handled through the submitting office. All measurements are approximate.