

JOIN EXISTING HAMPTON INN HOTEL

± 3.4 ACRES

NEW RETAIL PAD

BUILD TO SUIT



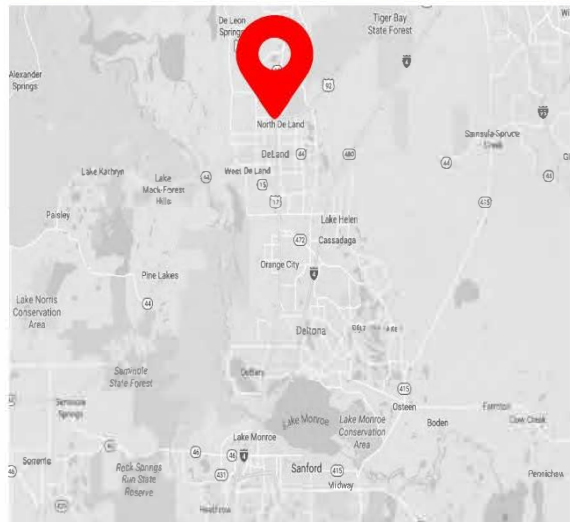
Mid Florida
Commercial Realty, LLC

N. WOODLAND BOULEVARD
DELAND, FL 32720



PROPERTY HIGHLIGHTS

- 3.4 Acres
- Ideal for Medical Use
- Near Hampton Inn Under Construction Next Door
- Located on a Primary Retail Road Near the Highest Volume West Volusia Walmart
- Across the Street from Deland Business & Industrial Park
- Proximity to Deland Municipal Airport
- Near the Major Intersection of Woodland Boulevard and International Speedway Boulevard



SUBMIT OFFERS

George Tsunis

Mid Florida Commercial Realty, LLC

959 Explorer Cove | Altamonte Springs, FL 32701

Office | 321.280.7888 | 📞

Direct | 407.877.1005 | 📞

gtsunis@tsunis.com | ✉️

JOIN EXISTING HAMPTON INN HOTEL

± 3.4 ACRES

NEW RETAIL PAD

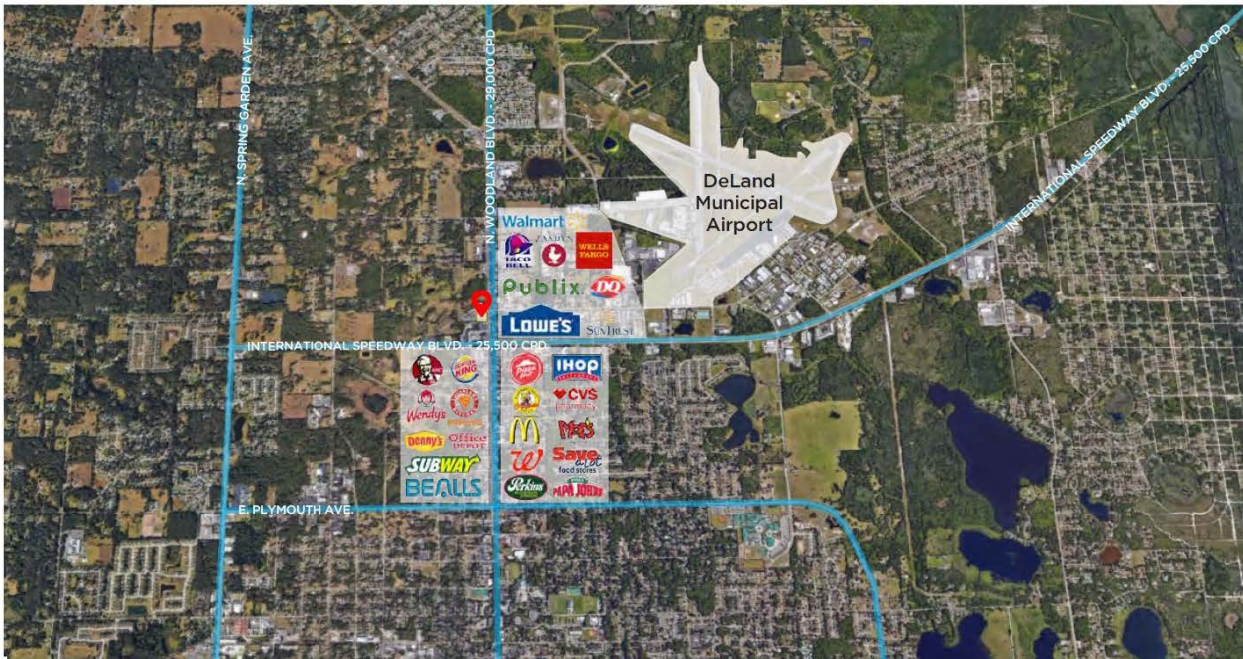
BUILD TO SUIT



**Mid Florida
Commercial Realty, LLC**

**N. WOODLAND BOULEVARD
DELAND, FL 32720**

COMMERCIAL BIRDSEYE



George Tsunis

Mid Florida Commercial Realty, LLC

959 Explorer Cove | Altamonte Springs, FL 32701

Office | 321.280.7888 | 📞

Direct | 407.877.1005 | 📞

gtsunis@tsunis.com | ✉️

JOIN EXISTING HAMPTON INN HOTEL

± 3.4 ACRES

NEW RETAIL PAD

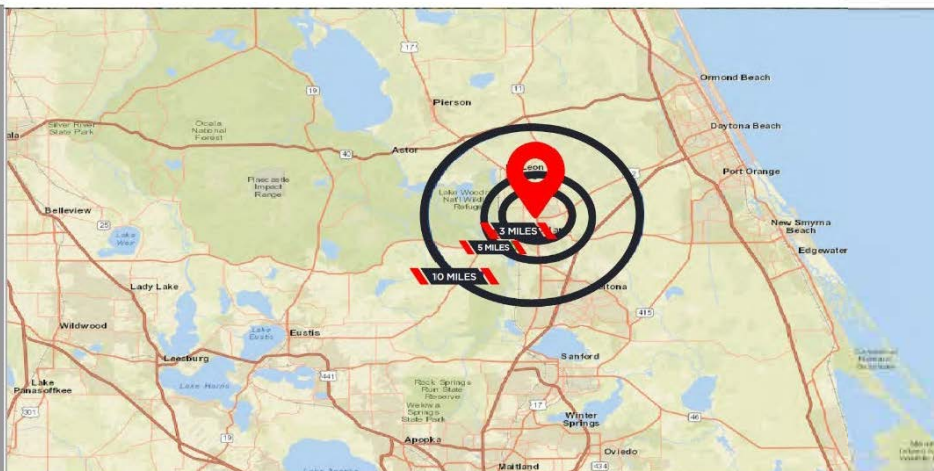
BUILD TO SUIT



Mid Florida
Commercial Realty, LLC

N. WOODLAND BOULEVARD
DELAND, FL 32720

DEMOGRAPHICS



2017 SUMMARY

Population
Households
Families
Average Household Size
Owner Occupied Housing Units
Renter Occupied Housing Units
Median Age
Median Household Income
Average Household Income

3 MILES

38,152
14,797
8,945
2.41
8,894
5,903
42.7
\$41,146
\$58,591

5 MILES

61,406
23,984
15,018
2.45
15,398
8,586
43.6
\$44,158
\$61,938

10 MILES

114,411
44,618
29,039
2.50
30,500
14,199
43.9
\$46,307
\$62,066

2022 SUMMARY

Population
Households
Families
Average Household Size
Owner Occupied Housing Units
Renter Occupied Housing Units
Median Age
Median Household Income
Average Household Income

3 MILES

40,347
15,619
9,401
2.42
9,344
6,276
43.4
\$46,996
\$67,932

5 MILES

65,481
25,516
15,915
2.46
16,293
9,223
44.2
\$50,824
\$71,958

10 MILES

121,770
47,349
30,695
2.51
32,193
15,156
44.5
\$52,542
\$71,901*