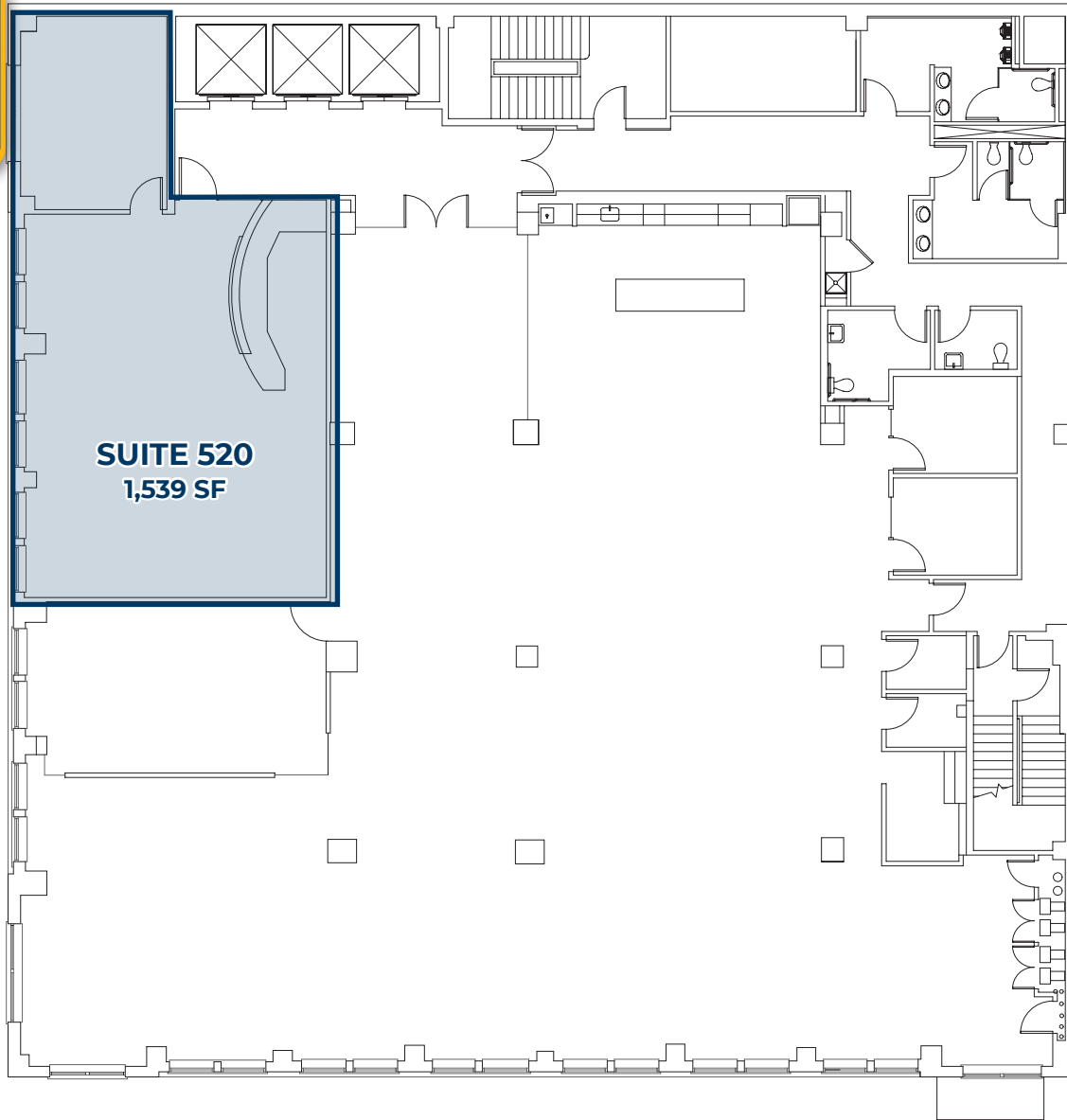




FLOOR PLAN



LEASE INFORMATION

Building	The Cascade Building
Address	520 SW 6th Ave, Portland, OR 97204
Floor	5th
Suite	520
Total SF	1,539 RSF

MCCOY DOERRIE, SIOR
Senior Vice President
503-523-7751
mccoy@capacitycommercial.com

JEFF FALCONER, SIOR
Principal
503-542-4346
jeff@capacitycommercial.com

GABRIEL BEHRMANN
Senior Associate Broker
971-237-2458
gabriel@capacitycommercial.com

